

presented by the International Anti-Vivisection Council, and was constructed in memory of a little brown dog whose bronze model surmounts it. On one side of the fountain there is the following inscription:—"In memory of the brown terrier dog done to death in the laboratories of University College, in February, 1903, after having endured vivisection extending over more than two months, and having been handed over from one vivisector to another, until death came to his release." The fountain cost £130, which was raised by subscriptions

amongst the members of the International Anti-Vivisection Council, who first of all applied to the London County Council for permission to erect the fountain in Battersea Park. Failing to get this permission, they presented the fountain to the Borough Council. An action for libel was threatened, and was at first derided by the Battersea councillors, but finally the Council put its seal to an agreement under which the International Anti-Vivisection Council undertook to indemnify the corporation against all risks.

Grand Hotel, Hastings

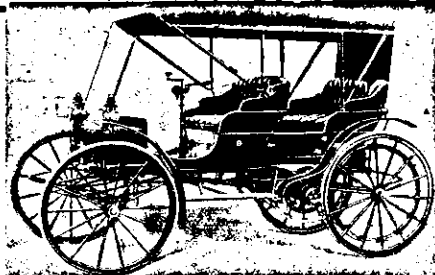


THIS Hotel

is replete with every modern Hygienic convenience; and furnished throughout in the best style. Absolutely fire-proof. Private sitting rooms on every floor. Hot and cold water baths. Commercial and sample rooms. Night and day porter in attendance. Cable: "Grand," Hastings. Telephone 114.

George B. Mackay, Proprietor.

... THE ...
**Holsman
Automobile
Company.**



The Oldest, Largest and Best Makers of

**MOTOR
BUGGIES and
WAGGONS in the world.**

High Wheels. Good Road Clearance. Will Climb any ordinary Hill, and Ford any fordable River. Solid Rubber Tyres. No Punctures. No Dust. Rides as easy as the best horse-drawn carriage.

Write for Catalogue and full particulars **W. J. Coles & Co.,** 124 Manchester St., CHRISTCHURCH.
Sole Agents for N.Z.



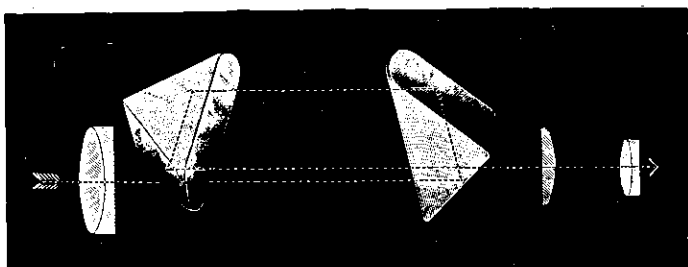
**Caledonian
Hotel,
Napier**

FERRO
CONCRETE

Everything New. Central Position. First-class Accommodation. Moderate Tariff. Correspondence receives prompt attention.

A. C. BARNES, Proprietor.

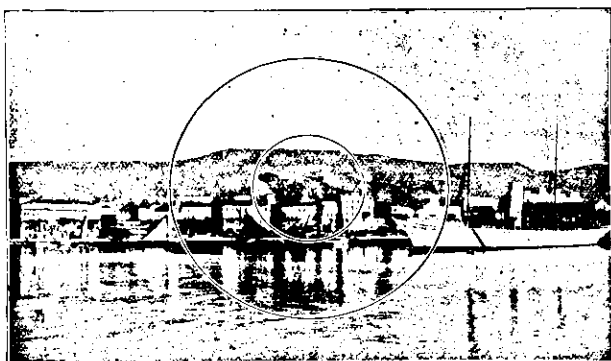
Promenade Roof. Absolutely Fireproof.



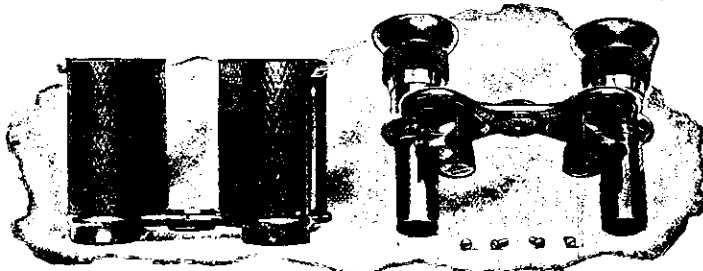
The Path of the Rays in the "Dollond" Prism Binocular.



DOLLOND'S PRISM BINOCULAR.
X 8, £6 15/- and £7 7/-; with rack, £10.
X 10, £10; with rack, £11 15/-.



These circles show the comparative sizes of the field of view, the smaller as seen through an ordinary Binocular and the larger as seen through Dollond's Prism Binocular, both of the same power.



Shows construction of Dollond's Prism Binoculars. Being English-made, the rate of custom duty is one third less than on German-made Prism Binoculars, and they justly claim to be the BEST VALUE in New Zealand.

By Special Appointment to His Excellency the Governor.

W. LITTLEJOHN & SON;

224-222 Lambton Quay, Wellington.