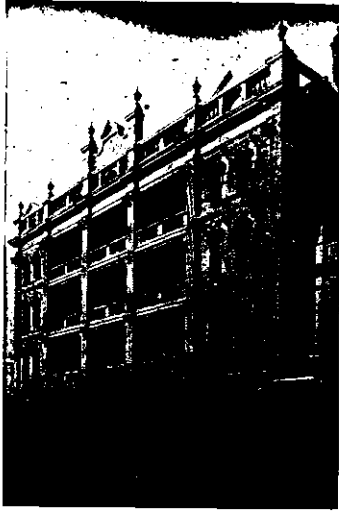


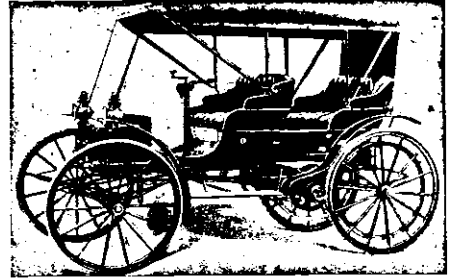
Grand Hotel, Hastings



THIS Hotel is replete with every modern Hygienic convenience; and furnished throughout in the best style. Absolutely fire-proof. Private sitting rooms on every floor. Hot and cold water baths. Commercial and sample rooms. Night and day porter in attendance. Cable: "Grand," Hastings. Telephone 114.

George B. Mackay, Proprietor.

... THE ... "Holsman" Automobile Buggy.



HAVE YOU EVER WISHED FOR AN AUTOMOBILE?

Will climb any ordinary hill and cross any fordable river. Has Solid Rubber Tyres. Is Built like a Carriage; Looks like a Carriage; Rides like a Carriage; and makes NO DUST.

Apply for full particulars to **W. J. Coles & Co.,** 124 Manchester St., CHRISTCHURCH. Sole Agents for N.Z.

C. BRANDAUER & Co's, Ltd. Circular Pointed Pens.

Seven Prize Medals.



These series of Pens neither scratch nor spurt. They glide over the roughest paper with the ease of a soft lead pencil. Attention is also drawn to their patent Anti-Blotting Series.

Works: Birmingham, England.

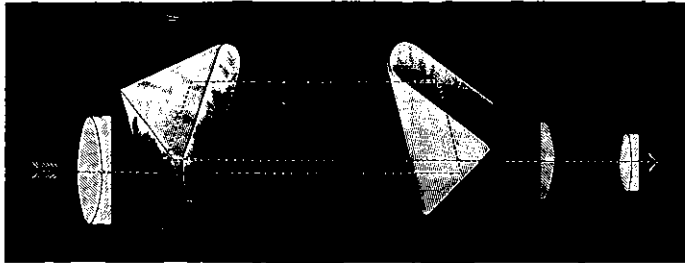
Ask your Storekeeper for an assorted Sample Box.



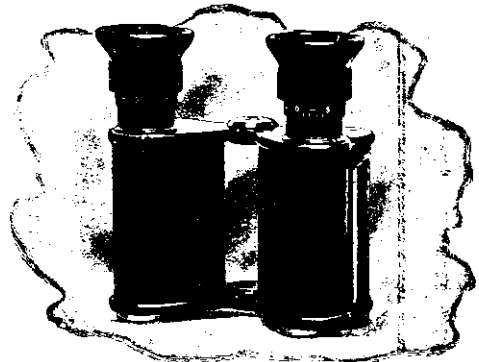
Caledonian Hotel, Napier

FERRO CONCRETE

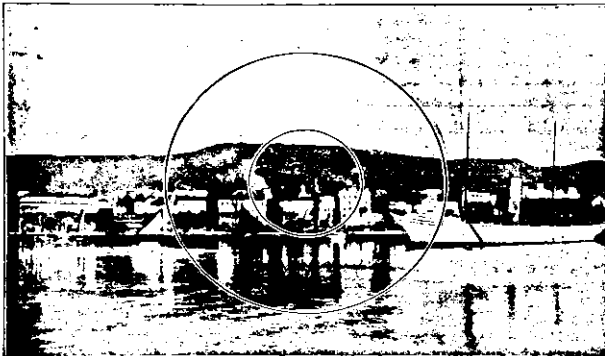
Everything New. Central Position. First-class accommodation. Moderate Tariff. Correspondence receives prompt attention. A. C. BARNES, Proprietor. Promenade Roof. Absolutely Fireproof.



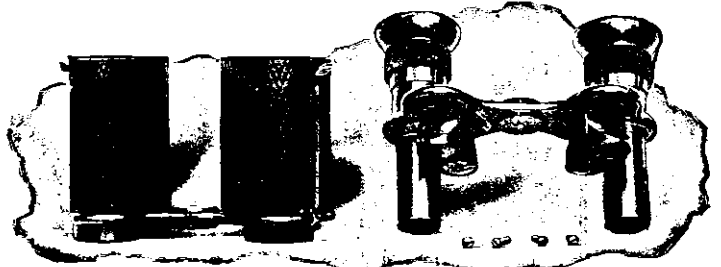
The Path of the Rays in the "Dollond" Prism Binocular.



DOLLOND'S PRISM BINOCULAR.
X 8, £5 15/-; and £7 7/-; with rack, £10.
X 10, £10; with rack, £11 15/-.



These circles show the comparative sizes of the field of view, the smaller as seen through an ordinary Binocular and the larger as seen through Dollond's Prism Binocular, both of the same power.



Shows construction of Dollond's Prism Binoculars. Being English-made, the rate of custom duty is one third less than on German-made Prism Binoculars, and they justly claim to be the BEST VALUE in New Zealand.

By Special Appointment to His Excellency the Governor.

W. LITTLEJOHN & SON,

224-222 Lambton Quay, Wellington.