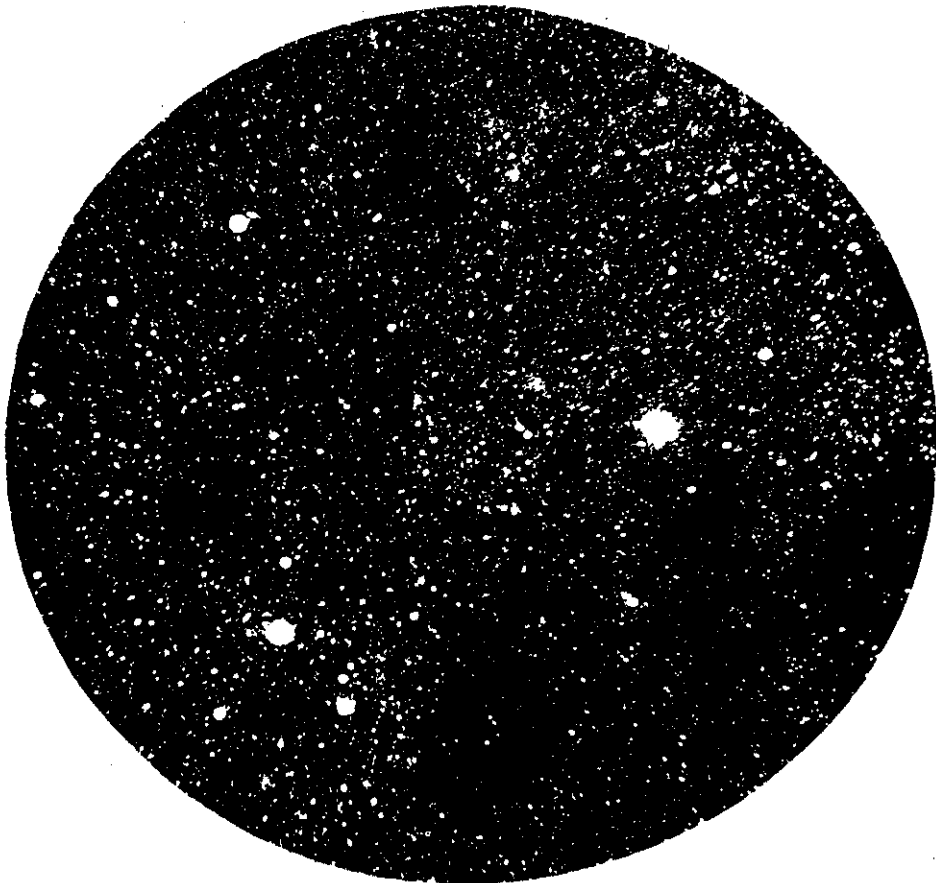


A PORTION OF THE MILKY WAY — N THE CONSTELLATION OF ARGO.  
(Exposure, 1 hour.)



CONSTELLATION OF THE SOUTHERN CROSS.  
(Exposure, 1 hour 30 minutes.)

**THE MYRIAD WORLDS OF THE UNIVERSE—PHOTOS TAKEN AT THE MEEANEE OBSERVATORY, NAPIER.**

Both the above photos, give a remarkable insight into the wonder and complexity of the Universe in which we move. The limited range of human vision is strikingly indicated by what the telescope and photographic plate reveal of the Southern Cross and the myriads of bodies that whirl about it.