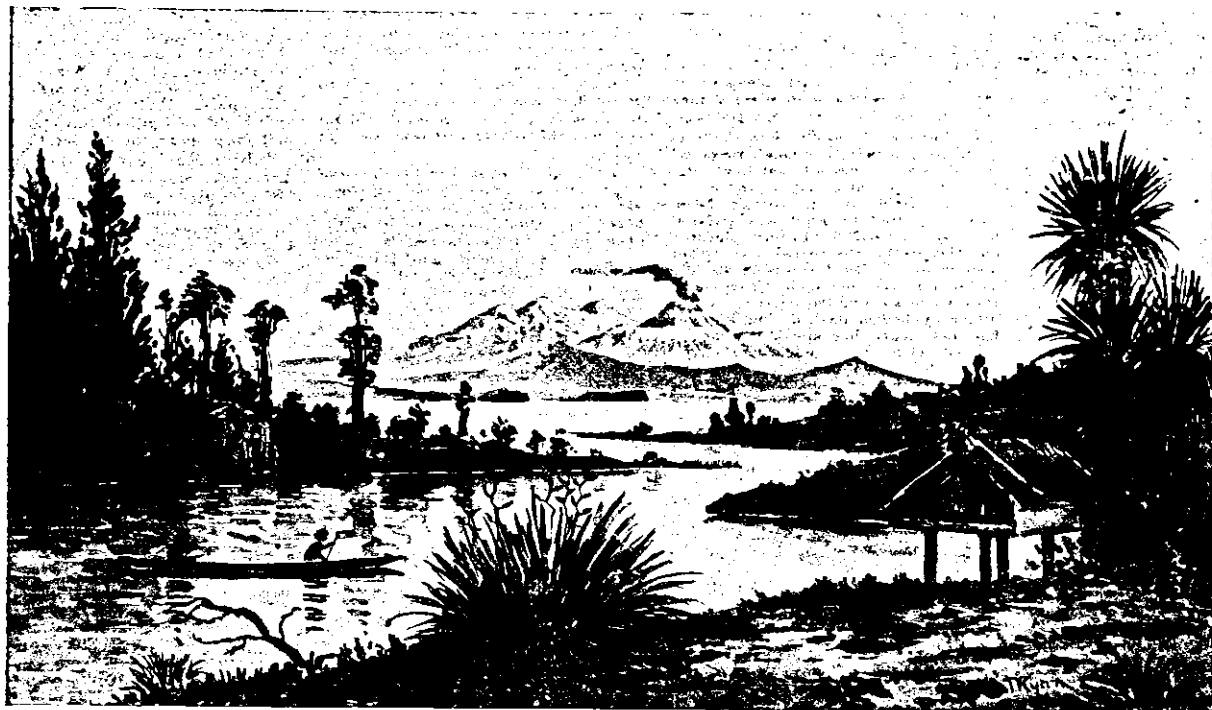


New Zealand New Zealand



LOOKING ACROSS LAKE TAUPO TO TONGARIRO AND RUAPEHU.

The Scenic Masterpiece of Nature!

*The Wonderland of the World!
The Deerstalkers' Delight!*

*The Sanatorium of the Earth!
The Anglers' Paradise!*

*The Home of the Maori!
The Tourists' Elysium!*

VISIT THIS WONDROUS LAND OF THERMAL ACTIVITY.

VISIT TE AROHA. Enjoy its hot baths and drink its health-giving mineral waters. Visit ROTORUA, the Sanatorium of the World. Its natural hot mineral waters they cure Rheumatism, Sciatica, Gout, Obesity, Liver Troubles, Uterine Complaints, Nervous Disorders, Skin Diseases, and other kindred ailments. Rotorua is a thousand feet above sea level. It has a splendid climate, fine drainage, a pure water supply, electric light, excellent hotels and boarding houses, and Government Baths. Visit the Thermal Wonders of Tikitere, Whakarewarewa, Tarawera, Rotomahana, Waiotapu, Wairakei, Taupo, etc., etc. See WAIMANGU, the greatest geyser on earth. Visit the Wanganui River. Its loveliness is beyond compare. Visit the famous Buller and Otira Gorges. Visit Hamner Hot Springs, (Government Baths and Accommodation House).

VISIT NEW ZEALAND.

See its lovely, Picturesque Lakes, its Magnificent Waterfalls and Rivers. Visit its great Fiords and Sounds. Climb its Towering Mountains, majestic in their immensity, and hoary with perpetual snow. Visit the Government "Hermitage Hotel," Mount Cook, under the shadow of the cloud-piercing Aorangi, 12,349 feet. (Thos. Cook & Son's Coupons accepted.) The home of the Tattooed Maori Warriors and their handsome, dusky daughters. Visit this wonderful country with its endless variety of beautiful and magnificent scenery which charms the senses, inspires the imagination and challenges comparison. Stalk its thousands of Wild Red Deer and Fallow Buck. Whip its rippling streams, teeming with Rainbow, Loch Leven and Brown Trout. For Pure Air, Pure Water, and a Temperate Climate. The Holiday Resort for the brain-weary and jaded man of business. The Ideal Home for the man of leisure. Four days from Australia. Seventeen days from San Francisco. Twenty-six days from London.



BLIND VOLCANO ON THE ROAD TO WAIOTAPU.

Trains, Coaches, Steamers everywhere. Comfortable Hotels, Cheap Tariffs. Full information regarding NEW ZEALAND supplied free at the Head Office of the Tourist and Health Resorts Department, Brandon Street, Wellington, or at the Branch Offices at Auckland, Rotorua, Christchurch, Dunedin and Invercargill.

Visitors may have their Correspondence addressed c/o the Tourist Offices as above. Free use of Directories, Telegraphic Code Books, and Writing Facilities. Photographic Dark Room provided free at the Head Office, Wellington.

Cable Address: "MAORILAND."

Minister in Charge of the Tourist Health Dept. —

The Hon. Sir JOSEPH WARD, K.C.M.G.

Superintendent —

T. E. DONNE.



THE YELLOW TERRACE, WAIOTAPU.