

lace. The coat in the illustration is made of navy blue cloth, and the collar, which is of Renaissance lace,



forms an effective trimming. The mother who embroiders can embroider the collar of the goods with coloured silks. There is a shield piece which may be utilised in cold weather.

© © ©



AN INDOOR GOWN.



This is an up-to-date cape of fawn-hued cloth, braided all over in a striking design with braid of a corresponding colour.

I am giving you a design for a very simple Empire frock for evening wear. It would look charming in black chiffon. Crepe de chine is equally lovely and wears well; certainly, it is expensive to buy, but in the long run you will find it more economical than chiffon. The frock is a simple one, hanging loose from the decolletage, where it is softened by some narrow frills; a very long sash passes round the body under the arms, tying in a bow at the back, with the ends hanging down on to the skirt. The hem of the skirt is finished with ruchings of black chiffon, and the long transparent ruched sleeves are composed of the same fabric.

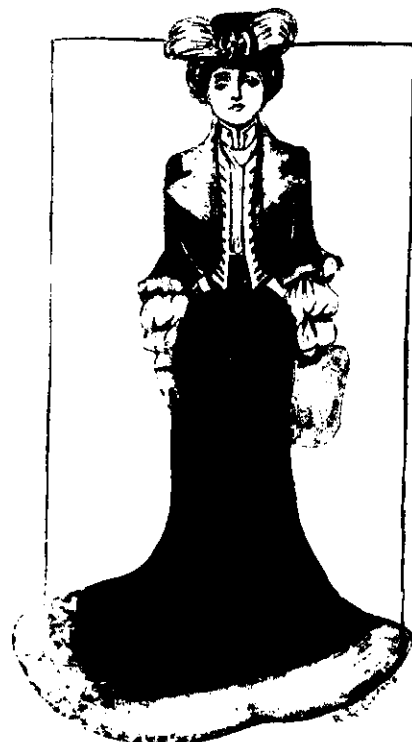
© © ©



AN EMPIRE GOWN.



A CARRIAGE OR EVENING COAT.



PARISIAN VISITING TOILETTE IN VELVET AND FUR.