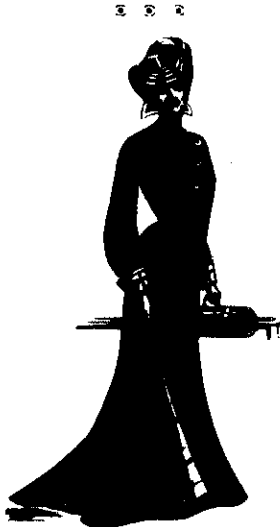


belts of ribbon or elastic tape to keep the back in proper position, and ease the shoulders from the weight of the skirt. For travellers by steamer at any season the dreadnaught of heavy frieze, over a waterproof serge or tweed frock is the most suitable wear. For deck wear both gown and coat should clear the floor; for the railway train, alas, ultra-fashionable women insist that they shall escape touching by a mere hair's breadth, which, of course, means that they touch when the wearer walks. The new colour for travelling suits and wraps is cinder-gray, ocean-gray, as some call it. The colour is a dull, dark gray, which reproduces the leaden tint of the sea under a sunless sky, and which shows dust less than any other colour which has been invented.

Englishwomen show a marked preference for the Tam-o'-Shanter as a travelling hat, next comes a soft felt with the simplest trimming; a buckle of soft surah passed through a buckle, and a couple of quills being what London houses most affect. Although nearly all the new hats call for hair twisted low on the head, the experienced traveller will continue to consult comfort and common-sense, and arrange her hair high.

Opera cloaks and carriage wraps are perfectly gorgeous, and here again is lace more to the fore than ever, while we never tire of the charms of endless frills of accordion-pleated chiffon. Painted pannes are still used, and some of these, trimmed with point d'Alencon and lined with accordion-pleated chiffon frills form truly regal garments. These are cut somewhat after the old shawl pattern, with the draped hood effect on the shoulders, consisting of lace over chiffon.

Evening coats are still cut a l'Empire, caught up with a wonderful band of gold embroidery and finished with a large falling collar of lace. Some are three-quarter length but the best are fully trained and as long as the dress beneath.



AMERICA'S LEADING CORSET.

The American "Erect Form" Corset is a triumphant combination of common sense and exquisite style. It has the ease and comfort of a ribbon girdle and combines every hygienic principle that can be applied to Corset building. There is an ERECT FORM for every figure. These Corsets are full of life and luxurious comfort. They are not stiff, unyielding pieces of armour, but give and bend with every give and bend of the body. In White Corset or Black Italian, 5/6, 6/11, 8/11, 21/-, 30/-, 35/-, 42/-, to 5 guineas.

TO BE HAD FROM ALL LEADING DRAPERS.

Sargood, Son & Ewen,
SOLE AGENTS FOR AUCKLAND.



BRIDESMAID'S DRESS.

The bridesmaid's Empire gown is of white peau de soie, with sleeved bolero of white point d'Alencon lace threaded with gold and lined with chiffon. A scarf of chiffon and picture hat of white satin straw and gold thread relieved with autumn foliage and chiffon, black velvet choux and gold buckles completes a charming costume.



WEDDING DRESS.

This is a very pretty wedding gown of white satin veiled with mousseline de soie. The skirt has two deep flounces of old Brussels lace headed with white satin ribbon tied at intervals in true lovers' knots. It is finely tucked round the waist for a short distance downwards, and there finish-

ed with white satin ribbon, tied again at intervals in true lovers' knots. The bodice is tucked to correspond with the tuckings below the waist, and draped with Brussels lace and ornamented with sprays of orange blossom. The long Court train of white satin is also tastefully arranged with Brussels lace and mousseline de soie.