

# Northern Steamship Co.

LIMITED.

HEAD OFFICE; QUAY STREET, AUCKLAND.

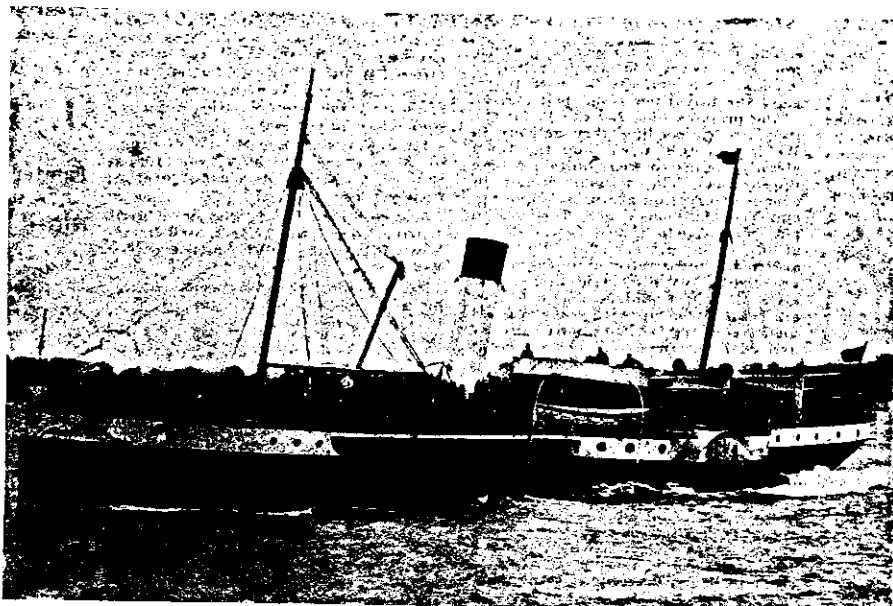
**West Coast Service:**

The Company's fine new steamer "Ngapuhi" runs regularly between Onehunga and New Plymouth, connecting with train for Wellington; leaving Onehunga every Sunday and Wednesday, and New Plymouth every Monday and Thursday, on arrival of express train. The vessel is replete with every comfort, and in all departments is thoroughly up-to-date.

\*\*\*\*\*

**Bay of Plenty Service:**

Tourists proceeding to Rotorua would do well to return to Auckland via Tauranga, as in doing so the coach drive will take them through the beautiful Oropi Bush and past the Gate Pa, the scene of a noted battle during the Maori War.



NORTHERN STEAMSHIP COMPANY'S FAVOURITE EXCURSION STEAMER P.S. "WAKATERE."

**Northern Service:**

**BAY OF ISLANDS.**

Tourists and others desiring to see the North of the Island will find much pleasure in making a trip in the "Clanemau," calling at the Bay of Islands, Whangaroa, Bay of Islands, Whangaroa, Bay and Mangouai. At the Bay of Islands many interesting memorials may be seen of the early history of New Zealand.

\*\*\*\*\*

**WHANGAREI.**

The Town of Whangarei is the outlet for a thriving district, and may be reached within eight hours' steam of Auckland. Within a short distance of the town there is a fine Waterfall and Mineral Springs, the curative qualities of which have attracted considerable attention.

All information regarding Fares may be obtained on application to the Head Office, or to any of the Company's Agents.

**CHARLES RANSON, Manager.**

## RUSH FOR



# ACCOMMODATION.

**We Can Supply**

**16/-**

**SPOT CASH.**

A GOOD SHAKEDOWN STRETCHER

A GOOD THICK MATTRESS

A GOOD KAPOK PILLOW

**16/-**

**SPOT CASH.**

# Tonson Garlick Co., Ltd.

QUEEN STREET, AUCKLAND.