

that are springing into active life on every hand. Of course, I am dealing with the question from the standpoint of the "work-a-day" people.

In the matter of fashions, my readers, I think, join me in the modicum hope that the chiffons of 1901 may prove as attractive and becoming as those of the past 1900. Muslin is undoubtedly the craze this season, though the hope has been long deferred for wearing it. The flowered muslins recall the days of our grandmothers, when simplicity was affected in muslin and a sash. The modish muslin gown of the moment is a dangerous pitfall to the uninitiated. It looks so guileless and simple that he or she (mainly "he," as unversed in the fearsome wiles of dressmakers), thinks how pretty and inexpensive; yet, four or five guineas is an average price for these "simple" and perishable gowns. I shall, however, deal more exhaustively with this matter in a future issue.

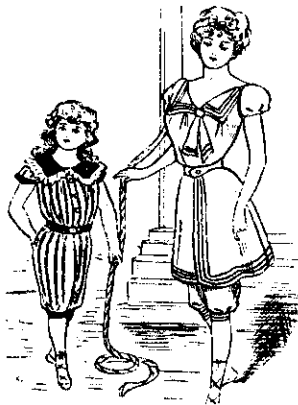
This very charming linen gown is expressed in a pretty shade of pale blue, the corselet and trimmings being



A CHARMING LINEN GOWN.

carried out in twine-coloured lace, tiny little steel buttons further embellishing the whole. A novel and really very charming trimming which figures on many of the most effective linen, and indeed some of the tweed and woollen gowns, is embroidered crash, sometimes carried out exclusively in one tone, or again two or three shades of colour are employed intermingled with artistic little touches of black. In every case the effect is delightful.

The sketch shows a couple of bathing suits, one for a child and the other for its mother. The little girl's dress



AQUATIC EQUIPMENTS.

is of blue and white stockingette, with a blue collar and band, while the other costume is of bright red serge, trimmed with white braid. In both instances the feet are protected by sandals, which are now the most approved footwear for bathing in.

I am giving you a design for a new, smart afternoon gown. It would look well in a bright shade of navy-blue cashmere. You will see it is made with an under-flounce, and this, as well as the over-skirt, is piped or stitched at the hem. The bodice is



AFTERNOON GOWN.

tucked at the waist, and the sleeves are somewhat of the Elizabethan order, that is, tucked to form three small puffs. The fluted, piped, or stitched revers disclose a vest of drawn white crepe de chine, finished at the neck with a smart little bow. If it would not be too expensive, blue crepe de chine would look lovely instead of cashmere, though the latter is now a very fashionable material.

In the world of millinery the most conspicuous novelty is the hat whose brim turns abruptly back from the face with a large bow of silk or bunch of flowers. Other hats, again, resemble nothing so much as a large flat plate, and are supported on the hair, which is much puffed out by a broad bandeau. These are made out of crinoline straw cunningly woven to imitate lace. Such are trimmed with



A PICTURE HAT.

swathings of chiffon or tulle, or perchance satin ribbon and flowers. They recall to one's mind the portraits of Marie Antoinette. The picturesque hat illustrated is of fine Leghorn straw abundantly trimmed with pink roses and foliage. Soft tulle strings coming from behind are tied at one side, the inside of the drooping brim having ruchings of white tulle as a lining. We are allowed to tilt our hats at whatever angle best becomes us, much latitude being permitted in this respect. The most fashionable veils at present are those of fine silken Russian net, plain or with a couple of chenille spots, but the latter are rather difficult to adjust, and cannot be put on in a hurry, as the effect of the spots appearing at the wrong part of the face is decidedly ludicrous. Another becoming net is of the finest tulle covered with very fine spots. It

is whispered abroad that no longer are our veils to be fastened below our chins, but are to come only as far as the upper lip, but the time is not yet here when the mode will become generally adopted.

White voile is the fabric chosen for this ideal summer gown, but the belt and bow are to be of old-gold silk, while the vest is a white one run through with gold ribbon. Stitched blue and white linen with a front of



A COOL DRESS FOR THE SUMMER

tucked muslin and little inner sleeves also of muslin, make a charming summer toilette. The hat and the waistband of this toilette are both to be black, and very cool and pretty the effect would certainly be.

ELABORATE TOILETTES SUITABLE FOR A GARDEN PARTY.

The gown on the left hand is made of beige batiste, with touches of gold over white mousseline de soie, and the other is a turquoise-blue mousseline and linen gown very elaborately



ELABORATE TOILETTES SUITABLE FOR A GARDEN PARTY.

gauged, and threaded through with black ribbon velvet. Picture hats go with both costumes.