



Wairond, "Graphic" photo.

THE CHOIR OF THE CHURCH OF THE SACRED HEART.

St. John's Wesleyan Church.

This handsome church, standing on a very elevated part of our western suburb, is often referred to by visitors to Auckland as being one of the prettiest of colonial churches, having a captivating exterior, with a pleasing and comfortable internal accommodation, and was opened at a cost of about £4000 on April 30th, 1882.

The trustees are Messrs A. Thorne (secretary), W. E. Hutchison (treasurer), J. L. Wilson, John Banbury, James Heron (builder of the church), G. Winstone, J. Horsley, John Swales, J. C. Dickinson, W. Hutchison, A. Russell, W. Bartley, T. Cook, H. A. Bloomfield, S. E. Hulbert, and Joseph Scott.

The Circuit ministers appointed by Conference to the charge of St. John's since its opening include: Revs. H. R. Dewsbury, T. G. Carr, C. H. Garland, H. Bull, C. H. Laws, A. Peters, and W. Ready.

The itinerancy system of the Methodist Church possesses (at least) one excellent advantage (as against a settled and continued pastorate), in that it gives a wide selection to the Methodist people of preachers variously gifted and experienced, who minister to them of their wisest and best, and at the close of the time limit they remove to other spheres of usefulness, to the benefit of people and pastor alike.

The itinerancy has a few drawbacks in the shape of removal of families, but as Methodist ministers have all homes and furniture provided for them wherever they go, the removal only means the packing and carriage of large libraries, and it may be a piano, or other private articles, and is not so great as the removal of a married bank officer with a family, who may be transferred, who has either to have an auction sale of home and furniture, or else freight his belongings from city to city.

As a rule, there are no bickerings at the close of the residential period, as the ministers usually leave carrying with them the love and good wishes of the people, and they are ready to accord a warm and happy greeting to the new preacher.

By the itinerancy, the Methodist ministers make thousands of friends as they travel in their various circuits throughout the colony, and the people in their turn, coming into contact with so many ministers, can arrange to a nicety the man most likely to be a success in any particular charge.

Taking everything into account,

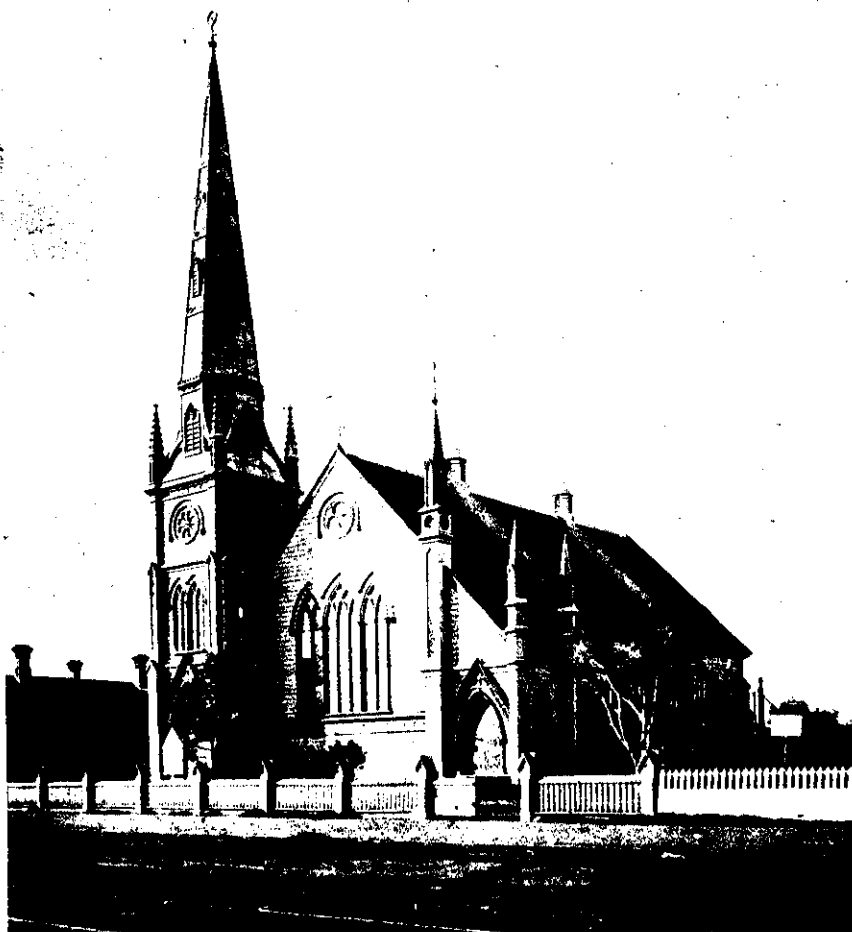
John Wesley was a very wise and far-seeing church legislator, when he drew up the Methodist Poll Deed, the "Time Limit," fixing it three years, with annual appointments.

The present minister in St. John's Church is the Rev. W. Ready. He is truly a live evangelical preacher, with an originality all his own, showing a master passion for preaching, and happy both in pulpit and platform. He is not of towering stature, but fire

dwells in his eyes and heart. He lays but little emphasis on mere dignity (as developed in some preachers), but often, to the surprise and pleasure of his congregation, breaks out with a sacred song, which is a becoming break in his sermon. His affability and manner are fascinating, with not a particle of cant in his composition, and all pretence and pretenders he holds in contempt. He is humorous, but not satirical, and a friend always

to be relied upon. His popularity is seen by the large congregation which listen to him weekly. He goes about his work with a big and growing sympathy for the age in which he lives, and evidently tries to make the world better for his living in it. We wish him many years of useful toil in his Master's work.

His portrait, with that of St. John's Church and choir, also the Boys' Club, appear in this issue.



Wairond, photo.

ST. JOHN'S WESLEYAN CHURCH, PONSONBY.

Some Auckland Places of Worship.