

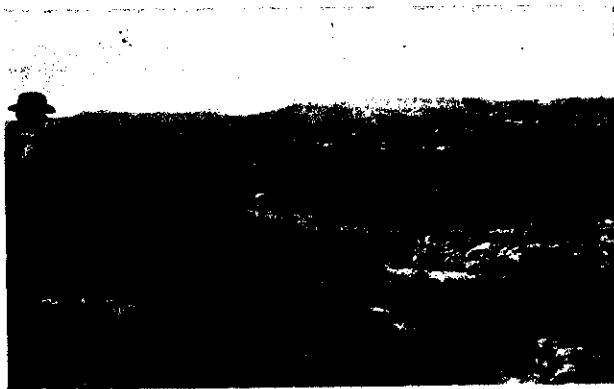


VIEW OF THE CAMP AT LADYSMITH.

The troops at Ladysmith have become so accustomed to the bombardment from the Boer guns that they pursue their ordinary duties in camp in the same undisturbed manner under the heaviest firing as when the Boer artillery have closed down for the day.

WITH THE CONTINGENT AT THE FRONT.

Photos. specially obtained for the "N.Z. Graphic."



BRITISH COLUMN CROSSING THE VELD.



THE DURBAN LIGHT INFANTRY'S DEPARTURE FOR THE FRONT.



THE BRIDGE AT FRERE, DESTROYED BY THE BOERS.



A PARTY OF NEW ZEALANDERS SCOUTING.