

THE NEW ZEALAND
WEEKLY GRAPHIC
CHRISTMAS NUMBER

DECEMBER
1909



Fire and Marine Department.

FIRE AND MARINE RISKS
OF
EVERY DESCRIPTION
ACCEPTED ON MOST
FAVOURABLE TERMS.

MODERATE RATES.

Directors.

JNO. BATGER, Esq.
R. ANTHONY CARR, Esq.
JNO. EDSON, Esq.
W. C. W. McDOWELL, Esq.
THOS. PEACOCK, Esq.
J. H. UPTON, Esq.
W. R. WILSON, Esq.

Accident Department.

Mortgagees' Indemnity.
Administration Bonds.
Employers' Liability.
Ordinary Accident.
Workers' Compensation.
Public Risk.
Plate Glass.
Burglary.
Fidelity Guarantee.

LIBERAL SETTLEMENTS.

THE SOUTH BRITISH INSURANCE COMPANY, LIMITED.

<i>Capital</i>	- -	£2,000,000.
<i>Paid-up Capital and Accumulated Funds exceed</i>	- -	£550,000.

This Company is authorised to accept
ACCIDENT RISKS of every
Description.

THE SOUTH BRITISH COMPANY'S
**"UP-TO-DATE"
POLICY**

COMBINING

*Accident and
Sickness Benefits*

IS THE MOST LIBERAL YET
OFFERED TO THE PUBLIC OF
NEW ZEALAND.

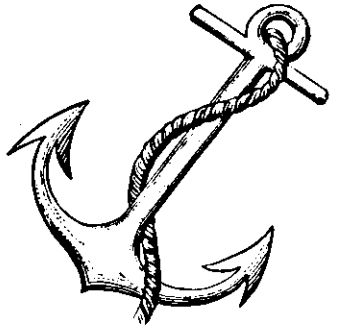
BEING A COLONIAL
INSTITUTION
ALL PROFITS ARE
RETAINED IN THE
COLONY.

JAMES KIRKER,
GENERAL MANAGER

R. MARIS CLARK,
SECRETARY

From a / to an

THAT IS WHAT WE STOCK.



Church Goods of Every Description

This Space is too limited to enumerate all that we have in Stock, but anything you want if you write for, we can supply you.



Try and Write for Something we have not got, and you will be disappointed, for you will find that we have it in Stock.

WE ALSO STOCK

Pads, Envelopes, Copy Books, Memo Forms, Receipt Forms, Playing Cards.

Teas, Soaps, Camphor, Perfumes, Sanitary Paper Holders, Brushes (all sorts), Tooth Brushes, Inks, Scrubs, Buck Combs, Hair Combs, Carbon Balls, 1/8 doz. boxes, Frames, Toilet Creams, Lanolines, Powders, Face Complexions, Watch Keys, Universals, Studs, Links, Fly Catchers, Paper Balls, Chamois Leather, Wooden Butter Dishes, Glass Centres, Cheap Mirrors, Tobacco Cutters, 3/6, 4/6, 6/6, Hair Clippers, 5/6.

Pipes—Briar, G. B. D., Loewe Cherries, Cigarette Holders, Luxol Lights, 180 for 10. 9d., 1/2. Padlocks, Razor Straps, 1/2. 1/6. 2/6. 3/6. Rapid Knife Sharpener, 2. Spirit Irons, 15. Hair Brooms, 2. 3. 2. 3. 3. 3. Ferns, Palms, 2. 8. 3. 5. 4. 6. Sparklets, Siphons, Bombs, Tobacco Pouches, 1/2. 1. 6. 2. 6. Tooth Pastes, 4d. 6d. 1. Cullery-Jessert, 10. 6. Dinner, 12. 6. Plated Knives, 18. half dozen, Dessert, Dinner, 20. half dozen, Pen Knives, 6d. 9d. 1. 1/6. 2. 6. Meat Choppers, 1. 5. Bonnyray Knives, Weights, Scales, 6. String, Twine, Pot Fans, Bamboo Blinds, special, plain, green.

FURNITURE.

Electro-plate and Silverware.

We have a Splendid Stock to select from.

- TEAPOTS**—Beautiful designs, at 15/6, 17/6, 21/6, 25/6, 30/6, 35/6, 40/6, 45/6; also in Solid Silver, 84/6, 105/6, £8 6/-.
- GRUETS**—Dinner and Breakfast, at 6/6, 8/6, 12/6, 17/6, 25/6, 32/6, 40/6, 50/6, 60/6.
- UNIQUE COFFEE SET**—On a Lovely Tray, to match, 30/-.
- CAKE DISHES**—Newest Patterns, 20/6, 25/6, 30/6, 37/6, 45/6, 50/6.
- BISCUIT BAKERS**—Latest Shapes, 6/6, 8/6, 10/6, 15/6, 20/6, 27/6, 35/6, 47/6, 55/6.
- TOAST RACKS**—Breakfast and Dinner, 6/6, 8/6, 12/6, 17/6, 25/6, 32/6.
- JAM DISHES**—Single and Double, excellent designs, 7/6, 10/6, 15/6, 19/6, 27/6, 32/6, 38/6.
- AFTERNOON TEASPOONS**—At 7/6, 10/6, 15/6, 21/6, 27/6, 32/6, 40/6 a case.
- CAKE FORKS**—5/6, 7/6, 12/6, 18/6, 25/6, 32/6, 40/6 a case.
- SET OF CUPBERS**—Set in case, at 15/6, 21/6, 27/6, 32/6, 37/6, 45/6, 52/6, 66/6.
- SILVER BACK AND B.P. N.S. BRUSHES AND MIRRORS**—7/6, 10/6, 12/6, 15/6, 20/6, 25/6, 32/6, 40/6, 45/6, 50/6, 57/6.

Space will not permit us to enumerate the hundreds of other kinds of goods in Silverware and Plate, but write us, we are sure to have it.

Jewellery.

In endless variety in Ladies' Brooches, neat and new patterns, 10/6, 15/6, 21/6, 30/6, 35/6, 45/6, 57/6, 66/6, 84/6, 97/6, up to very high-class goods.

LADIES' WATCHES—In Gun Metal, Nickel Silver, and Gold, 7/6, 12/6, 21/6, 27/6, 32/6, 40/6, 45/6, 55/6, 62/6, 75/6, 80/6, 90/6, upwards.

RINGS, WAIVER CHAINS, NECK CHAINS, LACE PINS, SCARF PINS, LINKS, IN GOLD AND SILVER, and Dozens of Other Similar Class of Goods to select from in **MEDIUM and GOOD QUALITY.**

Leather

Goods, we have a Magnificent Stock in Every Class of Ladies' Bags you can imagine, in all the Newest and Latest Makes, at 5/6, 7/6, 10/6, 15/6, 18/6, 25/6, 30/6, 37/6, 45/6, 50/6, 57/6, 67/6.

GENTS'

Bags, Brief, Gladstone, and Kit, at 8/6, 10/6, 12/6, 15/6, 17/6, 21/6, 27/6, 32/6, 37/6, 42/6, 50/6, 57/6, 65/6, 75/6. Also **TRAVELLING TRUNKS** of every kind, Cabin, Stratoga, in Tin and Wood, 12/6, 15/6, 20/6, 25/6, 30/6, 35/6, 40/6, 45/6.

Novelty

Clock with Globe of the Earth on top, which revolves once in 24 hours and shows the different times all over the earth. Very instructive. 12.

Church

Goods of every kind, including Statues of all kinds; Sanctuary Oil, 5/6 gallon; Wax Candles, 2/6 lb.; Rosary Beads, from 2/- dozen up to 10/6 each; Prayer Books, from 1d. up to 21/- each; Scapulars, 1/3 dozen; Medals all sorts; Pictures, beautiful selection, from 3d. dozen up to 3/6, for prayer books; large ones, for framing, in Black and White and Coloured Oleograph, from 2d. up to 10/6 each; Charcoal Wicks and Floats, in tin and wood, Crucifixes, in brass and aluminium, Brassware in Candles, Monstrances, Thuribles, Benediction Charts; Holy Water Fonts, 6d. to 3/6 each; Olive Candles, 6d. dozen; White Porcelain Candles, for altars, etc.

Music

Pianos, English instruments, and reliable, £27 10/-, £35, £45, £50, £55, £60, £65. Also, a big selection of other musical instruments—Violas, Euphos, Guitars, Accordions, Concertinas, Mouth Organs, etc., etc.

Money

Safes to keep it in, all sizes, fire-proof, 50/6, 60/6, 70/6, 80/6, 90/6, £5, £7, £10, £15, £20.

Sewing

Machines, good and reliable, 50/6, 60/6, 70/6, 80/6, 90/6, £5, £6.

Dinner

Gongs, for private use or for hotels, 9. 6. 12. 6. 15/6, 17. 6. 25/6, 30/6, 40/6.

Spirit

Decanters, with lock and key, 19. 6. 25/6, 30/6, 35/6, 40/6, 50/6, 60/6.

Pedestals

Marble, Works of Art, suitable for halls or churches, £3 10/6, £4 10/6.

Crumb

Trays, in great variety. Copper ones, with brushes, very handsome, 4. 6. Ordinary kind, 1/6, 1. 6. 2/6, 2. 6.

Toys

of every kind imaginable, in Dolls, Figures, Trains, Boats, Animals, etc., etc., at 1d., 2d., 3d., 4d., 6d., 8d., 10d., 1/6, 1. 6. 2/6, 3/6, 4. 6. 6. 6, upwards.

Furniture

Suitable for everyone, in medium and good. Write us, and you will be repaid for your trouble. Artistic designs a specialty. Wardrobes, £5, £7 10/6, £10, £15. Sidelboards, very choice, £6 10/6, £8 10/6, £10, £15 and £19 10/6, which is really a marvel at the price. Of course, we cannot mention here in this limited space what we have, but simply say, **WRITE US FOR PARTICULARS.**

Sleep.

Bedding of every kind, in all sizes and in all kinds—Kapok, Flax, Horse Hair, Flock, Fibre.

Stationery

Pads, in Bank Paper, 5 - doz. Envelopes, 3. 6. 4. 6. 5. 6. 6. 6 a thousand.

MARSUMA

THE HALL-MARK OF PURITY.

England's Greatest Cigarette.

Absolutely the Purest and Best Cigarette in the market. Will not affect the throat or eyes, nor stain the fingers. Guaranteed free from all dust, dirt, or colouring matter. The only Shilling, English Hand-made Cigarette sold for Sixpence per packet. We have also just to hand, **Marsuma Darby Bay Cigars**, 3d., and **Marsuma Specials** at 6d. These Cigars are made at the same factory, and we can guarantee that one trial will convince you of their superiority. A **Marsuma Pipe** is one in which you can rely upon getting a good enjoyable smoke. No trouble is spared in the manufacturing of these pipes in order that they may be a success. Every Pipe is picked, and all the Briars specially selected. Price, 1/6, 2/6. If not obtainable in your district, send the price in stamps for any of the above articles, and we will post them free.

Boomerang.

We cannot improve on Nature, and that is what we do not try to. In our famous **BOOMERANG TEAS** we give them to you direct from the gardens to the consumer; no blending, no mixing, but just as Mother Nature grows it, with all its beautiful aroma and flavour conserved. As an introduction, the company gives a nice present with each 20/- worth of tea purchased. The prices are—1. 6. 1. 9. 2. 2. 6. put up in 1lb. and 1lb. packets, also in tins of 6, 12, 20lbs., chests and 1/2 chests.

Children's

Frags, Go-Carts, of every kind, at 30/6, 40/6, 50/6, 60/6, 70/6, 80/6, 90/6.

W. F. DARBY, Warehouseman,

DARBY STREET, AUCKLAND.

AT
CHRISTMAS
TIME

Above all times during the year you need to be well dressed.



CHRISTMAS

Is the end of your year's work, the finish of your annual toil, and by your appearance your friends will judge your prosperity.

It therefore behoves you to

LOOK YOUR BEST!

A "DALTON" MASTERPIECE,

50/= TO ORDER.

The quality in this smart Fifty-shillings Suit proclaims the maker. The Style, the snap, distinctive cut, individuality and character are "Dalton's Own." If you're a particular man, a smart dresser, a good judge of clothes, come in and see us about this suit.

AND EXTRA TROUSERS FREE.

Many a man pays fifty shillings for a Slop Suit—a suit that fits all over and touches nowhere. Yet we make to your exact measure a splendid suit in the latest style, one which will be bound to please you and put you among the well-dressed men. You have the choice of hundreds of patterns, including some of the latest fashionable tweeds, and by placing your order now will secure an extra pair of trousers free. Isn't that offer worth your while? Mind you, there's no risk or disappointment, for we guarantee to give you every satisfaction. Dalton's Suits are not factory-made, but are manufactured by skilled Tailors.

If you live out of town write for the latest patterns and a self-measurement form—they are free. You'll find it to your advantage.



Dalton

TAILOR & CLOTHIER,
276-8 Queen Street,
Auckland,
New Zealand.

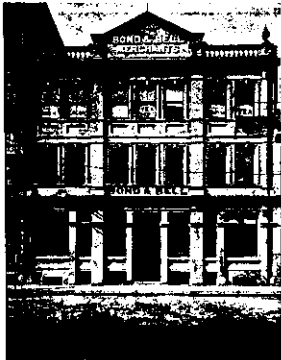


BOND & BELL

General Merchants

COMMERCE STREET, AUCKLAND.

EXPORTERS OF COLONIAL PRODUCE.



Premises, Commerce-street.

GRAIN and PRODUCE,
MANURES, SEEDS,
KAURI GUM.



Portion of the Offices.

GROCERIES,
TEA,
BUTTER,
CHEESE.



Receiving and Delivering Dept.

AUCKLAND AGENTS for—

MAORILAND S.S. COY., LTD.
BARRETT'S "BAKERINE."
"DAINTIES" CONFECTIONERY.

SOLE N.Z. AGENTS for—

'COOLIE' Brand PURE COCOA
'CHOYSA' Brand TEAS



Corner of the Grocery Dept.



Part of the Grain Dept.

Codes used A.B.C. 5th EDITION AND PRIVATE

REGISTERED TELEGRAPHIC AND CABLE ADDRESS } GUNSONO, AUCKLAND.



W. Gunson & Co

Vendors of FARM SEEDS AND FERTILISERS

Grain & Produce Merchants.

AUCKLAND N.Z.

GRASS and CLOVER SEEDS

OF THE FINEST QUALITY.



FERTILIZERS for all Crops.



*Bonedust
Superphosphate
Potash Manures
and Special Mixtures*

Lowest Current Rates. Lowest Current Rates.

SAMPLES AND QUOTATIONS ON APPLICATION.

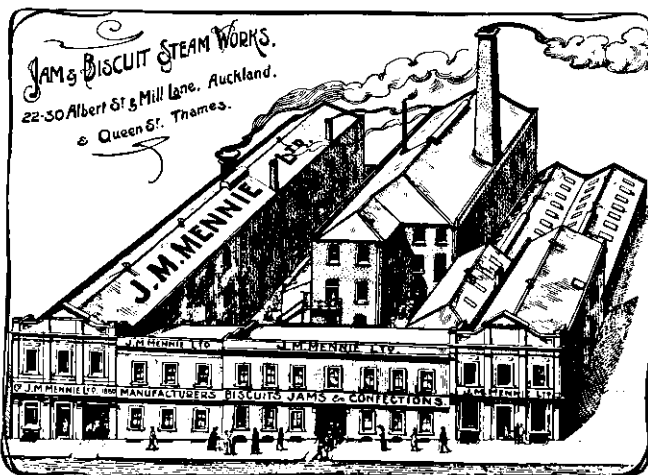
J. M. MENNIE LTD.

MANUFACTURERS OF

BISCUITS, CONFECTIONS, CHOCOLATES, JAMS

ETC. ETC.

THEIR GOODS ARE ALL FIRST-CLASS OF THEIR KIND.



ISH to return their sincere thanks to the public of New Zealand for the liberal support accorded to them in the past, and have pleasure in stating that they have greatly increased their producing capacity by the erection of additional Buildings and Machinery.

No need to send money away from Auckland, keep it here to pay your own people with, thus helping to do away with the unemployed question.

ALBERT STREET, AUCKLAND.

The XXth Century Sewing Machine

NEW MODEL



Have You
Seen
It?

SINGER
SEWING
MACHINES

SINGER

"66"

JUST OUT



Have You
Tried
It?

The Highest Type of **Family Sewing Machine**—the embodiment of **Simplicity and Utility**—the **Acme of convenience.**

Absolutely the lightest-running Lock-stitch Sewing Machine.

It only needs a mere touch of the treadle to start the machine. The use of ball-bearings, the superior design and mechanical excellence of construction throughout, all combine to make its continuous operation a pleasure—it runs so smoothly.

The new **Bobbin Ejector** is a marvel of ingenuity. No more annoyance—no trouble. A simple pressure of the finger on ejector instantly **Lifts the Bobbin** within easy reach.

Of its many valuable and unique features, the **Automatic Tension Releaser** commands notice. It is a veritable boon. Raising the presser-foot automatically releases the thread tension and allows the work to be **freely withdrawn**—no breaking of needles possible. Depressing it instantly restores correct tension.

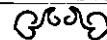
The **Attachments** furnished with this machine are so conveniently arranged in the centre locking drawer—a **separate place for each**—as to be easily accessible. There is a full set, comprising the latest and best designs.

HAVE YOU SEEN IT?
HAVE YOU TRIED IT?

When You Want a Rug!!

Kaiapoi Rugs are famous throughout the world for soft, fleecy comfort and artistic colourings. No Christmas Present from the Antipodes is so acceptable at Home as a beautiful All-wool Kaiapoi Rug.

Get a Good One!!



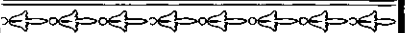
WHERE THE BEST RUGS COME FROM.



THE WOOLLEN MILLS AT KAIAPOI.

THREE KAIAPOI RUGS
for 1910.

The "KAIKOURA" 33/6
The "MOERAKI" 35/-
The "RUAHINE" 42/6



SOLD BY ALL DRAPERS
THROUGHOUT NEW ZEALAND.

Don't Start on that Holiday
Trip without one.

The Kaiapoi Woollen Manufacturing Coy., Ltd.

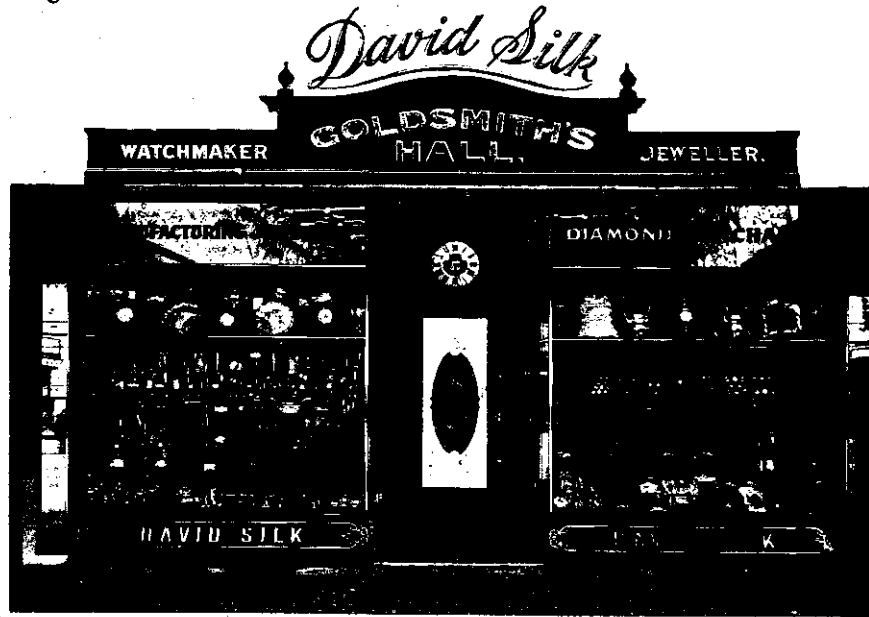
CHRISTCHURCH

AUCKLAND

WELLINGTON

DUNEDIN

A Cordial Welcome is extended to all to visit & view these magnificent premises & Stock.



124, Queen St., Auckland



Interior of Premises

Buyers of Christmas Presents should examine Our Enormous Stock of Artistic Jewellery & High Grade Watches. The Quality & Value defy Competition.

SAMUEL VAILE & SONS

(Incorporating WARD BAKER).

Real Estate Agents and Property Auctioneers.

87, QUEEN ST. AUCKLAND, N.Z.

MR. SAMUEL VAILE arrived in Auckland in 1843, and we have been connected with this city and province for SIXTY-SIX YEARS. Our Offices are the best situated and most commodious of any LAND AGENT'S premises in Auckland, and we claim that our lengthy business experience and old established connection place us in the front rank, and therefore in the BEST POSITION to SERVE YOU WELL.

WRITE FOR A
Containing FULL DETAILED
1,500 Properties

Mailed to any Address on

CATALOGUE
DESCRIPTIONS of over
of all Classes.

receipt of 3d. Postage.



**EFFECT
INSURANCES**
DISTRICT MANAGERS
for the
**PHOENIX ASSURANCE
Co., Ltd.**

**COLLECT
INCOME**
From
Rents, Interest,
Dividends, etc.

**ACT AS
TRUSTEES**
Executors and
Attorneys.

WE

WE

**SELL
PROPERTIES**
City, Suburban
or Country.

**LEND
MONEY**
On Mortgage
of Property.

Stations
Farms
Town
Properties

Insurances
Investments
Collections
Trusteeships

The Scenic Route Across the World.

To and from Canada, United States, and Europe
By the Canadian-Australian Royal Mail Line and
Canadian-Pacific Railway.



AN APACHE MEDICINE MAN.

EVERY 28 days steamers leave Sydney, calling at Brisbane, and thence through the South Seas, visiting the lovely Fiji Group (Suva), and on via Honolulu and Victoria, B.C., to Vancouver. From that point a variety of routes is open to selection across the American Continent—through

Grand Mountain Scenery—

Gold, Selkirk, and Rocky Mountains.

New Settlements—

The Prairies of the Great North West—Alberta, Manitoba, etc.

Superb Lake and River Scenery—

Lakes Superior, Michigan, Huron, Erie, etc. Rivers Fraser, Columbia, St. Lawrence, Niagara, Hudson, etc.

Around the World Tours

AT REDUCED RATES, in connection with Suez and Cape Lines, or via China and Japan. Passengers from or to New Zealand are booked through at specially reduced rates.

Famous Industrial Centres

Chicago, Toronto, Montreal, Boston, New York, etc.

THE Canadian-Australian Line offers choice of any of the Trans-Atlantic Lines between Canada or United States and Europe.

For Railway Maps, Guide Books, and all information, apply

IN AUSTRALASIA to the
Union Steam Ship Co. of N.Z., Ltd.
Managing Agents.

IN CANADA, AMERICA, or EUROPE
TO THE
Canadian Pacific Railway Company

Storied Isles of The South Pacific.

To Tonga (Nukualofa, Haapai, Vavau)
Samoa (Apia etc.)
Fiji (Levuka, Suva, Lautoka, etc.)

Monthly Round Tours by the splendid large Twin-Screw Steamers

"TOFU" (435 TONS)

"ATUA" (944 TONS)

"NAVUA" (2930 TONS)

Built specially for the Island Services, and equipped with every convenience for comfortable travel—Electric Fans, Electric Light, Large Roomy Cabins, Refrigerators, etc.

Saloon Cabins, Dining, Drawing, and Smoking Rooms

All on Deck.

TOURS also by first-class steamers from Auckland every 28 days, and from Wellington every 38 days, to RAKOTONGA (Cook Group) and TAHITI (Society Group). The steamer from Wellington connects with the Oceanic Co.'s American Mail Steamer at Tahiti to and from SAN FRANCISCO.

SHORTER TRIPS from Sydney or Auckland to FIJI, TONGA, or SAMOA, by "TOFU," "ATUA," "NAVUA," or other steamer every month.

These Islands can be visited without climatic discomfort at any time from April to November (inclusive).



A FIJIAN.

NEW SCENES away from business cares
GIVE NEW LIFE.

ALL particulars with Illustrated Booklets, descriptive of tours through Tongan, Samoan, Fijian, Heretongan, and Tahitian Groups, free on application.

Union Steam Ship Company of N.Z., Ltd.

HEAD OFFICE—DUNEDIN, NEW ZEALAND.
BRANCHES AND AGENCIES ALL AUSTRALASIAN PORTS. A:ID AT
34, LEADENHALL STREET, LONDON.

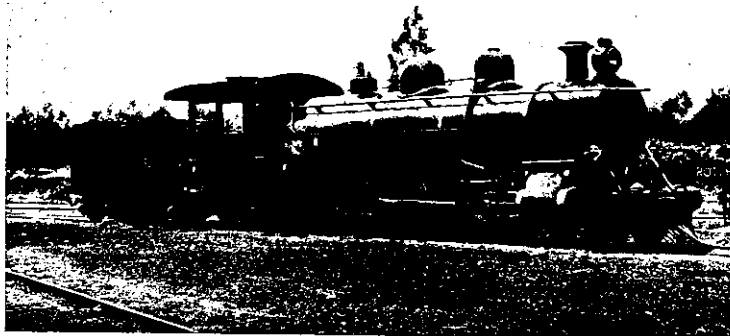
New Zealand Government Railways.

Tourist Excursion Tickets
(FIRST-CLASS)
Are issued daily (Sundays excepted) throughout the year, as under:—

(a) Available over lines of BOTH ISLANDS for SIX WEEKS from date of issue **£8**

(b) Available over NORTH ISLAND lines for FOUR WEEKS from date of issue **£5**

(c) Available over MIDDLE ISLAND lines for FOUR WEEKS from date of issue **£5**



THESE Tickets are available over Government lines only, and are obtainable as follows: (a) and (b) at Auckland, Frankton, Onehunga, Rotorua, Thames, Napier, Hastings, Woodville, Masterton, Palmerston North, Wanganui, Hawera, New Plymouth, Wellington and Te Anau; (c) and (d) at Nelson, Greymouth, Lyttelton, Christchurch, Ashburton, Timaru, Oamaru, Palmerston, Port Chalmers, Dunedin, Mosgiel, Alexandra, Clyde, Milton, Lawrence, Clinton, Invercargill, and Bluff Railway Stations; (e) and (f) series are available for travel over Lake Wakatipu.

Tourist Excursion Tickets may be extended for any period not exceeding four weeks on payment of an extension fee of £1 lbs. per week, or portion of a week, on application to the Stationmaster at any of the above-mentioned stations before the expiry of the original ticket.

Tourists' Tickets are only available on Government Railways open for traffic. Holders of such Tickets travelling via the North Island Main Trunk Railway line will require to re-book for the journey over the Public Works line, and also to pay their own coach fare.

EXCURSION TOURS

HOT LAKES, THERMAL SPRINGS, COLD LAKES, GLACIAL DISTRICTS, WATERFALLS.

CAVES. — FISHING. — SHOOTING.

Thermal Springs of the North Island.

Rotorua Hot Lakes Te Aroha and Waitomo Caves Okoroire Hot Springs

ROUND-TRIP EXCURSION TICKETS are issued throughout the year as under:—

- From Auckland to Thames by rail, Thames to Auckland by steamer, or vice versa.
ROUND TRIP—First-class, 21s.; Second-class, 15s.
- From Auckland to Rotorua, thence to Thames by rail, Thames to Auckland by steamer, or vice versa.
ROUND TRIP—First-class, 32s. 6d.; Second-class, 21s.
- Auckland to Hangatiki, Hangatiki to Rotorua, and Rotorua to Thames by rail, Thames to Auckland by steamer, or vice versa.
ROUND TRIP—First-class, 39s.; Second-class, 24s.

These tickets are available for three months from date of issue. The journey may be broken at any station at which the train is timed to stop after travelling ten miles from the original starting-station, provided the specified time for which the tickets are available is not exceeded.

Hanmer Plains Hot Springs.

Through Booking by Rail, Motor, and Coach to the Springs.

RETURN EXCURSION TICKETS TO HANMER PLAINS, available for return for three months, will be issued daily throughout the year from Invercargill, Dunedin, Oamaru, Timaru, Christchurch, Papanui, and Kaiapoi.

Return Through Fare (by Rail, Motor, and Coach) First Class:—

From Christchurch and Papanui	£1 8 0
From Kaiapoi	1 6 0
From Timaru	2 8 0
From Oamaru	2 14 6
From Dunedin	3 5 0
From Invercargill	4 5 0

The journey may be broken at any station at which the train is timed to stop after travelling ten miles from the original starting-station, provided the specified time for which the tickets are available is not exceeded.

Holder of through rail, motor, and coach tickets from stations beyond Culverden to Hanmer will be allowed to carry 112lbs. luggage free of charge for the rail portion of the journey. Luggage in excess of this weight will be charged 1s. for every 50lbs. or fraction thereof for every 50 miles.

For the motor portion of the journey, Culverden to Waiau Ferry, or vice versa, each passenger will be allowed to carry 56lbs. of luggage free of charge. Luggage in excess of 56lbs. will be charged at the rate of 1d. per lb. These rates will be in addition to the rates charged by coach proprietor for conveyance of luggage between Waiau Ferry and Hanmer.

Commercial travellers' samples will not be accepted for conveyance beyond Culverden.

The Cold Lakes and the Glacial District of Otago.

WAKATIPU HAWEA TE ANAU WANAKA MANAPOURI SUTHERLAND FALLS, Etc.

RETURN EXCURSION TICKETS, available for three months, will be issued between 1st November and 31st March, as under:—

To Kingston, Lake Wakatipu.

(Including saloon steamer passage Kingston to Queenstown and back.)

From	1st. Class.	2nd. Class.
Christchurch (via Waimea line only)	£3 13 6	£2 0 0
Christchurch (round trip via Waimea Line or Invercargill)	4 0 0	2 4 6
Dunedin (via Waimea Line only)	1 15 0	1 0 6
Dunedin (round trip via Waimea Line or Invercargill)	2 2 6	1 5 0
Invercargill (via Kingston Line only)	1 0 0	0 14 0
Invercargill (via either Kingston or Gore and Waimea Line)	1 5 0	0 15 6

To Pembroke, Lake Wanaka.

(Including saloon steamer passage, Kingston to Queenstown and back, and coach, Queenstown to Pembroke and back.)

From Dunedin (via Waimea Line only) 60s. (first-class)

The journey may be broken at any station at which the train is timed to stop after travelling twenty-five miles from the original starting station, provided the specified time for which the tickets are available is not exceeded.

Round Trip Tours through Central Otago.

ROUND-TRIP TICKETS, available for three months, will be issued from 1st November to 31st March, as under:—

No.	ROUTE.	First-class Fare.
1.	From Dunedin to Queenstown (via Waimea Line to Kingston); return to Dunedin via Wanaka and Lawrence; or vice versa	£4 0 0
2.	From Dunedin to Queenstown (via Waimea Line to Kingston); return to Dunedin via Arrow and Lawrence; or vice versa	3 5 0
3.	From Dunedin to Queenstown (via Waimea Line to Kingston); return to Dunedin via Wanaka and Clyde; or vice versa	3 14 0
4.	From Dunedin to Queenstown (via Waimea Line to Kingston); return to Dunedin, via Arrow and Clyde; or vice versa	2 14 0

*Including steamer and coach fares.

The journey may be broken at any station at which the train is timed to stop after travelling twenty-five miles from the original starting-station, provided the specified time for which the tickets are available is not exceeded.

The steamer service on Lake Wakatipu is conducted by the Railway Department, and is run in conjunction with the through trains from and to Dunedin and Invercargill; the Lake Wanaka service by R. S. MacDougall. The coach service is conducted by Messrs. Craig & Co.

John Court Ltd.

Drapers, Clothiers, Milliners,

"Always busy"

"Always busy"



Four Price Lists per annum, free on request.
Freight or Postage paid to all parts of the Dominion.

THREE SHOPS ON THE BUSY SIDE OF QUEEN ST.
UPPER SHOP - 14th McCullough & Gower,
OPP. STRAND ARCADE.
CENTRAL SHOP - OPP. HIS MAJESTY'S
ARCADE.
LOWER SHOP - OPP. BANK OF NEW ZEALAND

Our one address - *John Court Ltd.*
Queen Street, Auckland.

N.Z. GRAPHIC 1909 XMAS NUMBER.



MAGGIE. The GUIDING GENIUS of THERMALAND.



Dr. Telchelmann and Benthelm, photos.

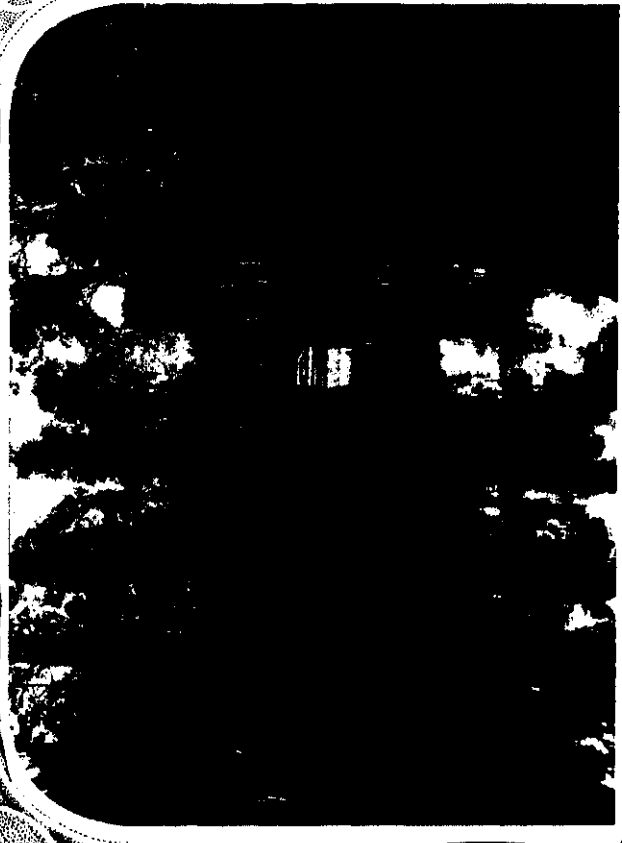
ALPINE WONDERS OF NEW ZEALAND—THE GREAT FRANZ JOSEF GLACIER.

(1)—At the head of the Franz Josef Glacier, Westland, near Graham's Saddle, 8,600 feet above sea level. (2)—An ice valley on the great glacier. (3)—View from Sentinel Rock, looking up the glacier. (4 and 6)—Ridges of ice. (5)—An impressive view of the head of the Franz Josef from near Sterling Peak, with Mt. Tasman in the background.

LAKE MAPOURIKA.



MAHINAPUA CREEK.

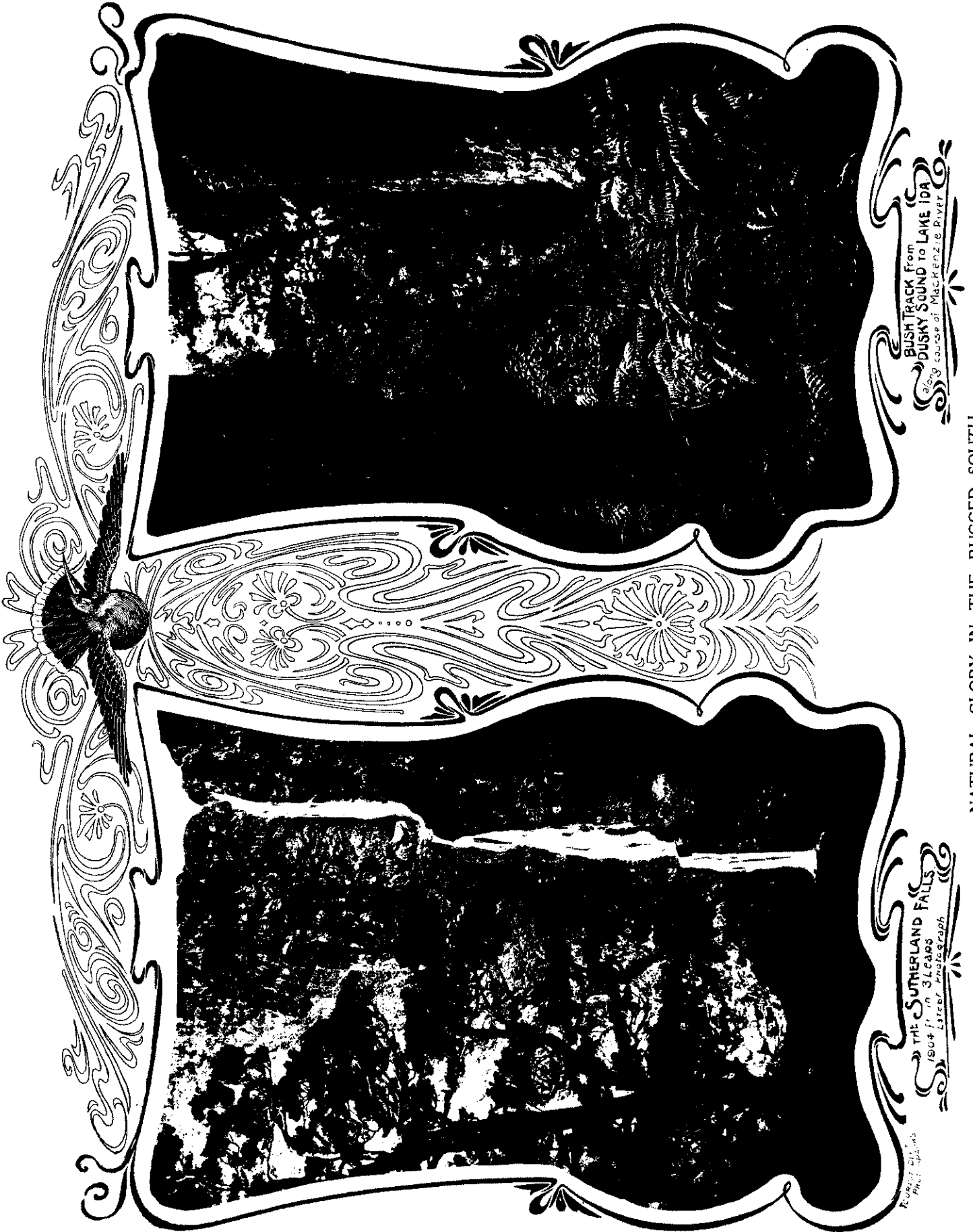


MAHINAPUA SOUTH CREEK.

AMID THE SHINING WATERWAYS OF MAJESTIC WESTLAND.



SHINING LAKES AND SILENT SHORES.



BUSH TRACK from
BUSKY SOUND TO LAKE IDA
 along course of MacKenzie River

THE **SUTHERLAND FALLS**
 150 ft. in 3 leaps
 Lister Photograph

NATURAL GLORY IN THE RUGGED SOUTH.



Radcliffe, photo.

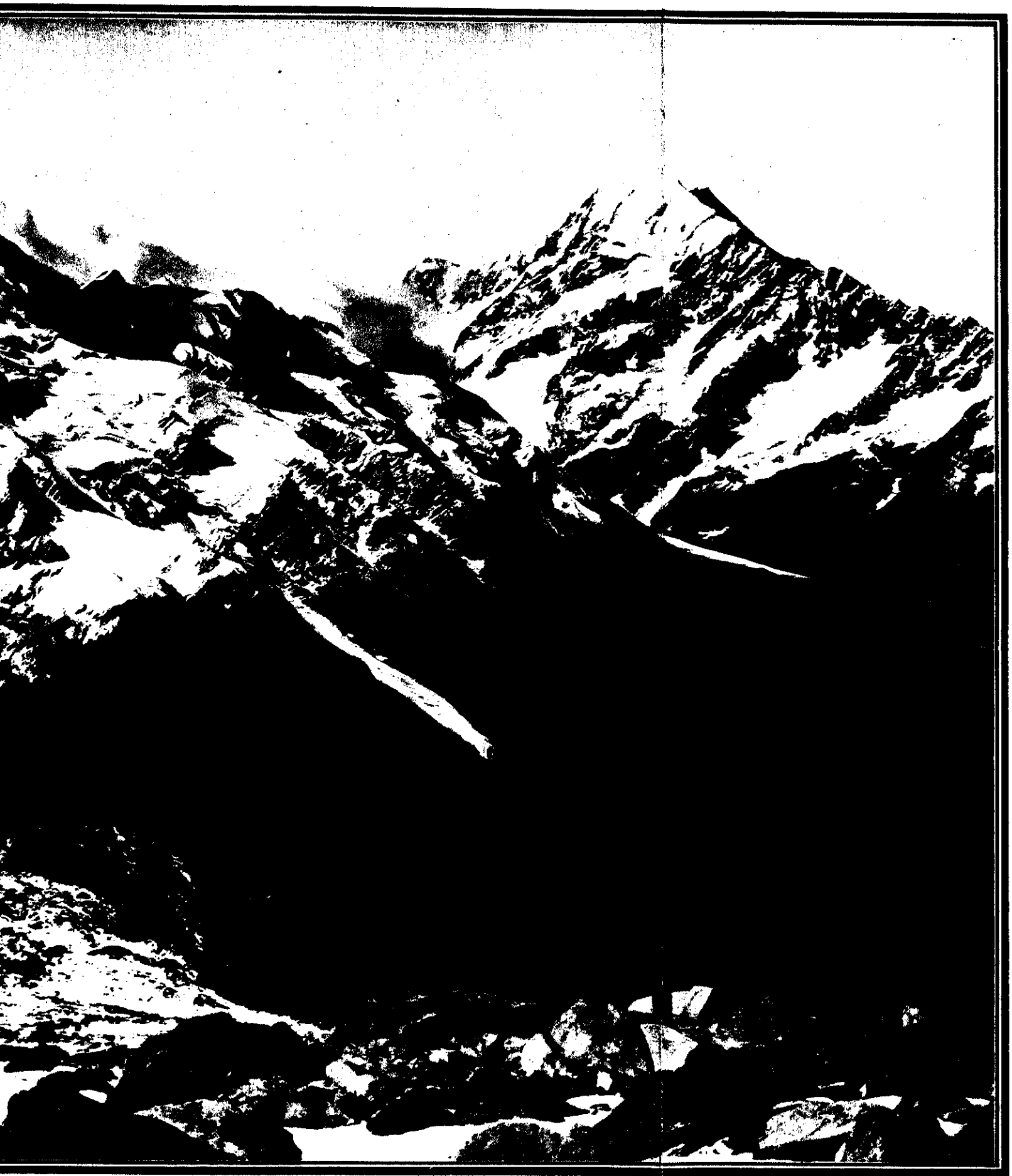
TE ANAU TO MILFORD, ONE OF THE MOST BEAUTIFUL WALKS IN THE WORLD.



DR. TEICHELMANN, Photo.

MOUNT COOK, THE LOFTIEST PEAK

ONE OF THE MOST INSPIRING SIGHTS AMID NEW



PEAK IN THE SOUTHERN ALPS.

NEW ZEALAND'S MOUNTAIN SPLENDOURS.

"Thou, too, hoar Mount! with thy sky-pointing peaks,
Of from whose feet the avalanche unheard
Shoots downward, glittering through the pure serene,
Into the depth of clouds that veil thy breast."

—Coleridge.

1.—Mt. Tasman (11,467 ft.).

2.—Balfour Range.

3.—Mt. Dampier. 4.—Mt. Cook (12,810 ft.). 5.—David's Dome.

6.—Harper's Saddle.

7.—Mt. La Perouse (10,000 ft.).



Dr. Teichmann, photo.

THE ALPINE SPLENDOR OF THE SOUTH.

1.—Panoramic view of the Mount Cook range in the Southern Alps. 2.—Mount Cook from the Scaly Range. Below it are the terminals of the Hooker and Mueller Glacier and the Hooker River. The mountains in the distance are 25 miles away at the head of the Tasman Valley. 3.—Mount Cook from the Glacier Dome, taken at 6 a.m.



Guy and Tomlinson, photo.

1. Cathedral Square.

2. High Street from the Clock Tower.

PEEPS AT CHRISTCHURCH, THE CAPITAL OF CANTERBURY.
3. Looking into Cathedral Square during the luncheon hour.

4. On the Banks of the Avon.

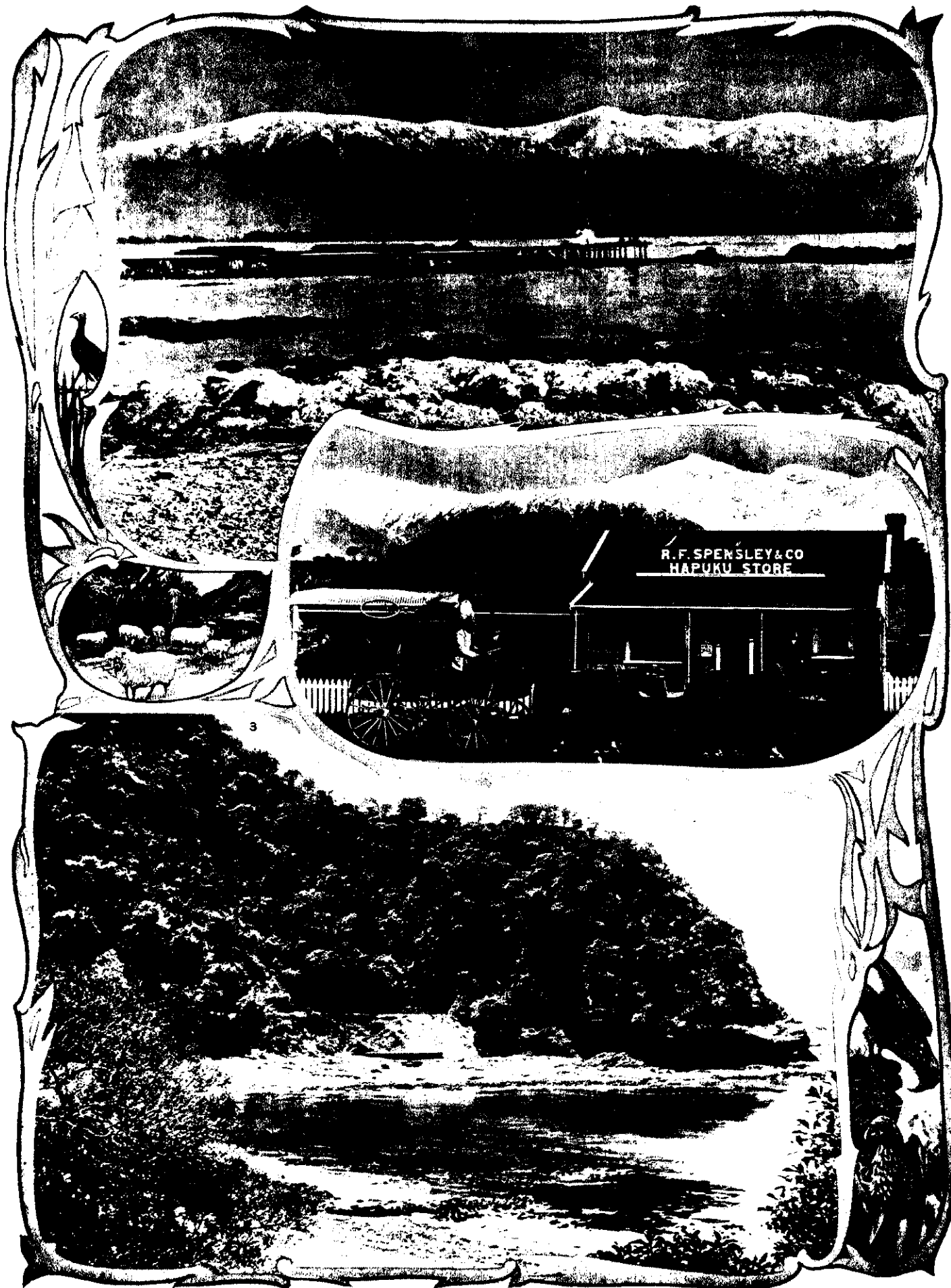


WHERE THE STEEL HIGHWAY SPREADS
ON THE
GREAT MIDLAND
RAILWAY.

Sutcliffe, photo.

LINKING UP CANTERBURY AND WESTLAND.

1—Tunnel under snow. 2—Cage over Staircase Gully, 240 feet above the creek. 3—A surveyor's camp. 4—Swing bridge over Broken River. 5—General view looking up Broken River. 6 and 7—Views of the Waimokauri River. 8—Where the line crosses Broken River. 9—A characteristic scene on the railway.



Tomlinson, photo.

AMID THE VIRGIN SPLENDOUR OF THE KAIKOURAS.

The north-east coast of the South Island, all the way from Kaikoura to Seddon, is a region of magnificent snow-clad ranges varying from 3,000 to 8,700 feet in height.

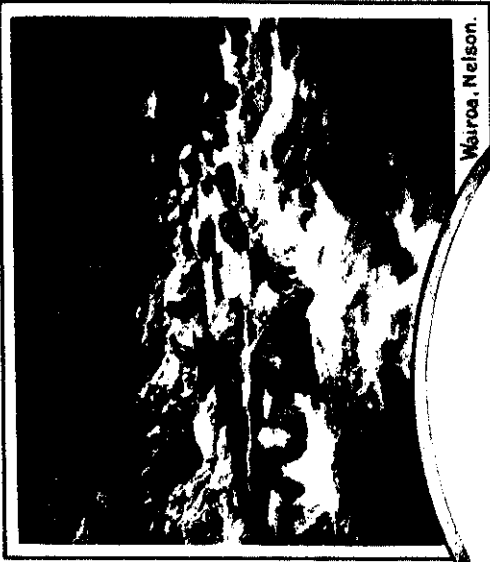
No. 1 shows the Mt. Fife Range from Kaikoura itself. 2.—The Seddon to Kaikoura coach at Hapuku. 3.—A characteristic peep of the coach road en route. The coach has to pass through the tunnel.



Arateatea Rapids, Waikato River.



Millers Glen, Tairāhī.



Wairoa, Nelson.



Early
New Zealand
River



Orangupuki River, West Coast.



The Waipa at Ngaruawahia.



Copy negative no. 1



THRESHING IN THE DISTRICT OF TURAKINA
CANTERBURY

GUY & CO. LTD.

GUY & CO. LTD.

HARVESTING IN CANTERBURY



GUY & CO. LTD.

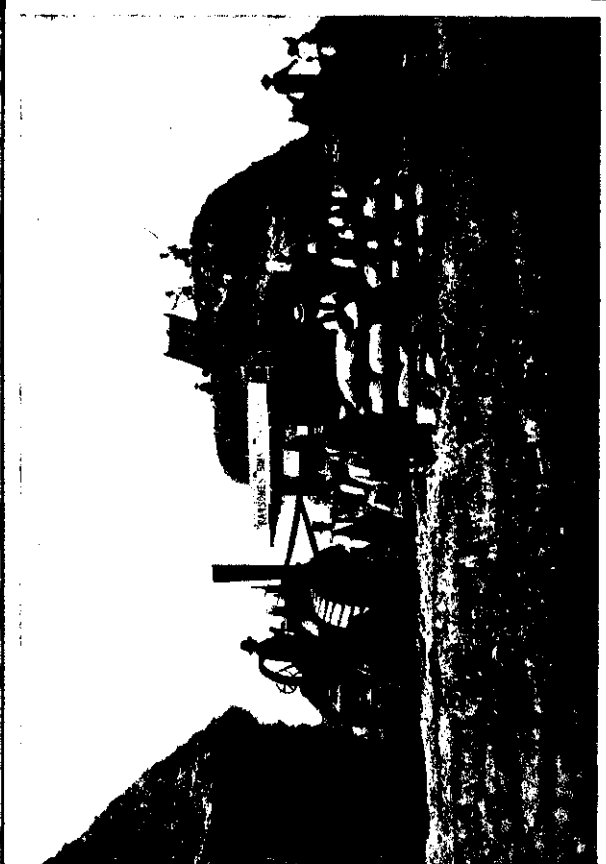
WINNING CORN FROM THE STACK

GUY & CO. LTD.



THE GLEANERS

GUY & CO. LTD.

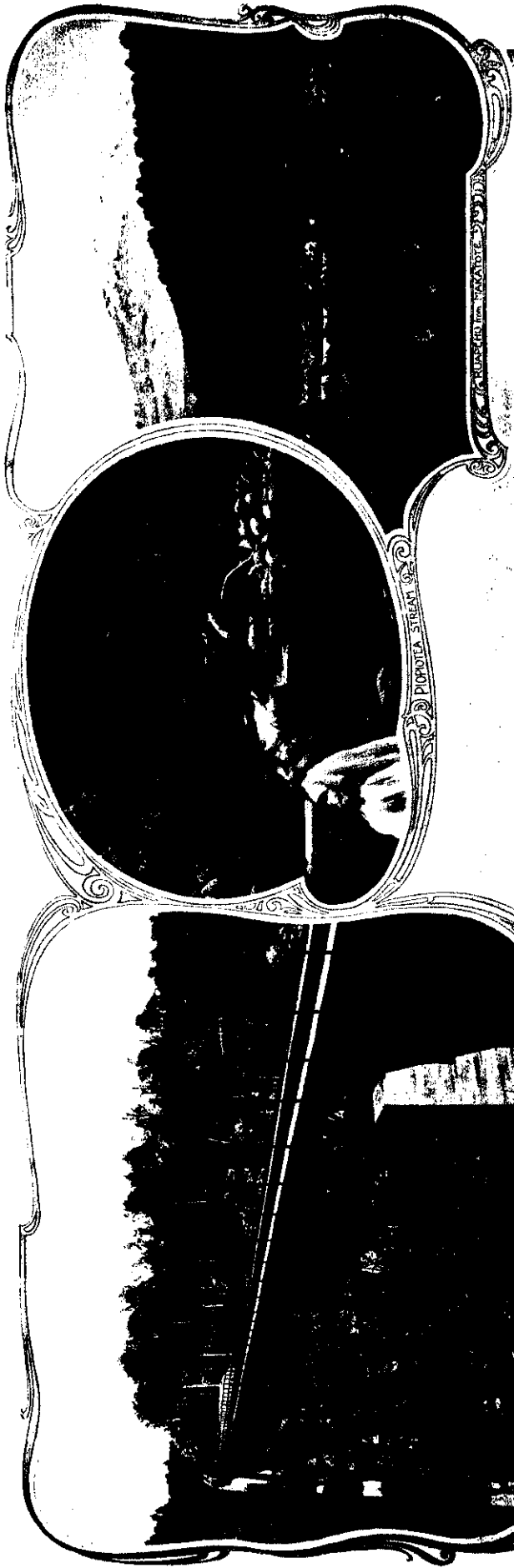


WINNING CORN FROM THE STACK

GUY & CO. LTD.

WHERE THE GOLDEN GRAIN IS WON. Copy negative no. 2

Copy negative no. 3



PIOPOTEA STREAM

WAIKATOE VIADUCT

RUPPEHU from WAIKOURU



MANGAVIETA VIADUCT

IN THE HEART OF THE NORTH ISLAND.
SCENES ON THE MAIN TRUNK RAILWAY, OPENED ON NOVEMBER 6, 1908, WHICH LINKS UP WELLINGTON AND AUCKLAND BY 426 MILES OF RAILWAY.



Ngauruhoe from Blue Lakes



Ngauruhoe in eruption.



Blue Lakes, Ngauruhoe



Ngauruhoe from Wairouru-Tokaanu Road



Ngauruhoe from Waimarino Plains



Ngauruhoe Crater.

Flummer, photo.



A BURNING MOUNTAIN IN FULL BLAST.

Ngauruhoe (7,515 feet), the only active volcano in New Zealand, is one of the three magnificent mountains that dominate the centre of the island, and around which the ancient Maori weaved many a poetic legend. The volcano, during 1909, was constantly active, belching immense clouds of smoke, steam, and cinders into the heavens. Not without living recollection has such a magnificent display been made by the mountain, and the tourists from abroad, who were fortunate enough to catch it in an angry mood, undoubtedly saw one of the most inspiring sights the phenomena of nature can present to mankind.

Whitehead, photo.

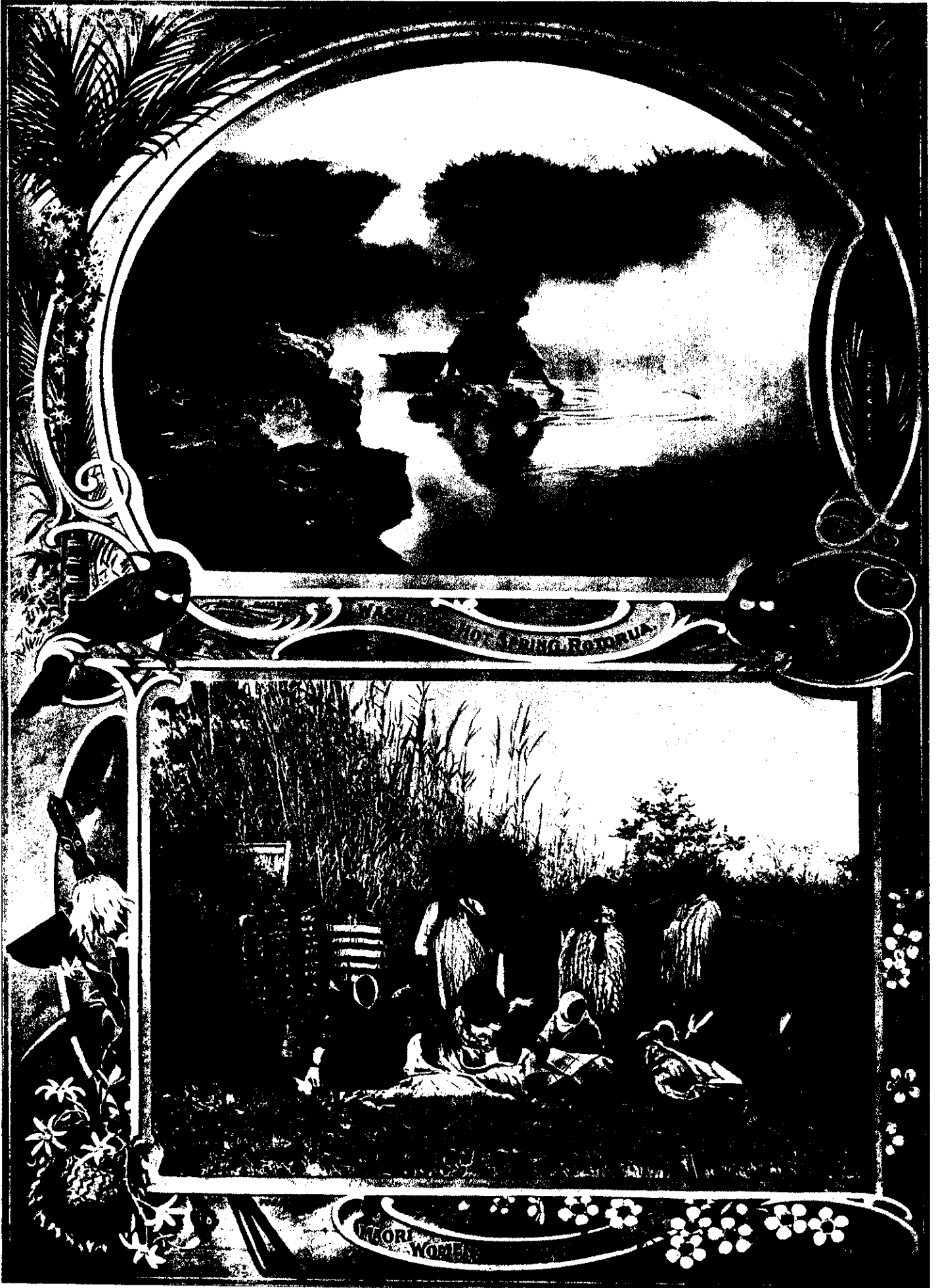


LIFE ON THE DOMINION'S GUMFIELDS.

1—Austrian diggers getting swamp gum. 2—The diggers' solace. 3—Sunday morning in camp. 4—Gum sorters at work. 5—The midday meal. 6—Back to camp after a successful day.

A NORTHWOOD PHOTO





IN NEW ZEALAND'S WONDERLAND.

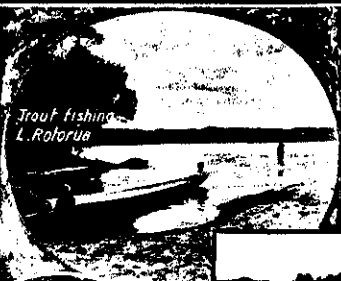
THE WONDERLAND OF NEW ZEALAND. ROTORUA TO RUAPEHU.



Maggie the Guide



A Maori Chieftainess



Trout fishing L. Rotorua



Inferno Tihitere



Shower Bath, Tihitere



Boiling Lake, Tihitere

L. Rotorua



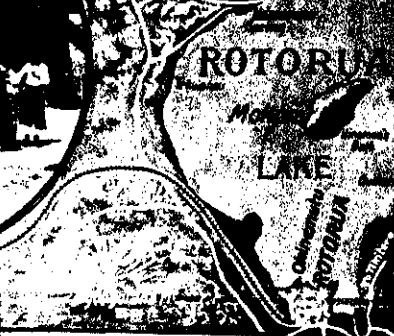
Hauhunga Spring



Inferno



Hinemoa's Bath



ROTORUA

LAKE



Fishing



Ohinemutu

TARAWEA LAKE

TAUPO (TINOTAPA) GREEN I.

TARAWEA RIVER

Maori Dance



Ohinetahua

TAUPO MOANA

1831 ft

1831 ft

Great Wairakei Geyser



Maori Girl

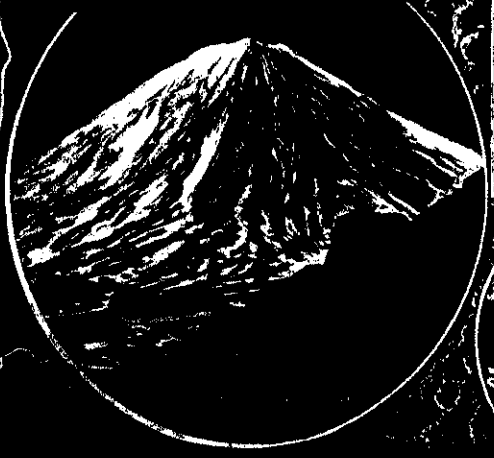


Karangahepe Cliffs

Whanganui Falls



Great Lakes Basin



Climbing Tongariro



North Peak Ruapehu

TAUPO MOANA

1831 ft

1831 ft

TOHARANU

Pihanga

Te Mari Active

Tongariro

Ngauruhoe Active 7315 ft

Te Heuheu

Paratetaitonga 2005 ft

Ruapehu 9175 ft

Ruapehu 872

OHAKUNE

WAITANGA

WAIDURU



Pinings



Red Crater



RUAPEHU UNROBING TO THE SUMMER MORN.

A PICTURESQUE PEEP OF THE HIGHEST MOUNTAIN IN THE NORTH ISLAND, RUAPEHU—9,175 FEET HIGH.

The above photograph gives an excellent idea of the many beautiful bush scenes that are to be found in the heart of the North Island. It was taken from the road, close to the Maketote Viaduct, on the Main Trunk Railway.



HOW NEW ZEALAND IS COLONISED.

The life of the backblocks in New Zealand is both healthy and hardy, as the young pioneers in the above photos show. They live in a world of their own—picturesque, strenuous, and sunlit. They are, in a phrase often used by the late Mr. Seddon, "the backbone of the country." The photos are as follows:—

- 1.—A Crown Land's Ranger, an influential factor in colonisation. 2.—A happy disciple of Isaac Walton. 3.—Children in the backblocks are never backward in having a swim. 4.—Sunday Morning at a typical backblock's slab hut. Note the concertina. 5.—A School built by the Settlers, which is visited three or four times a week by a travelling teacher. 6.—A novel mount. 7.—"Dear Old Dublin," the mainstay of the family, otherwise the backblock's omnibus. 8.—The call of the cow. 9.—Milking-time is never done. 10.—A feather-weight up. 11.—Dressed in their "Sunday best." 12.—Taking cream to the factory—a home-made cart. 13.—The family coach. 14.—A typical backblock's accommodation house. The tent is occupied by the proprietor and his wife, the slab hut being the kitchen and dining-room. 15.—Visitors at the sleeping house, on the opposite side of the road, who have "packed through" virgin country.



AYRSHIRE CATTLE.



CHANGING PASTURE.



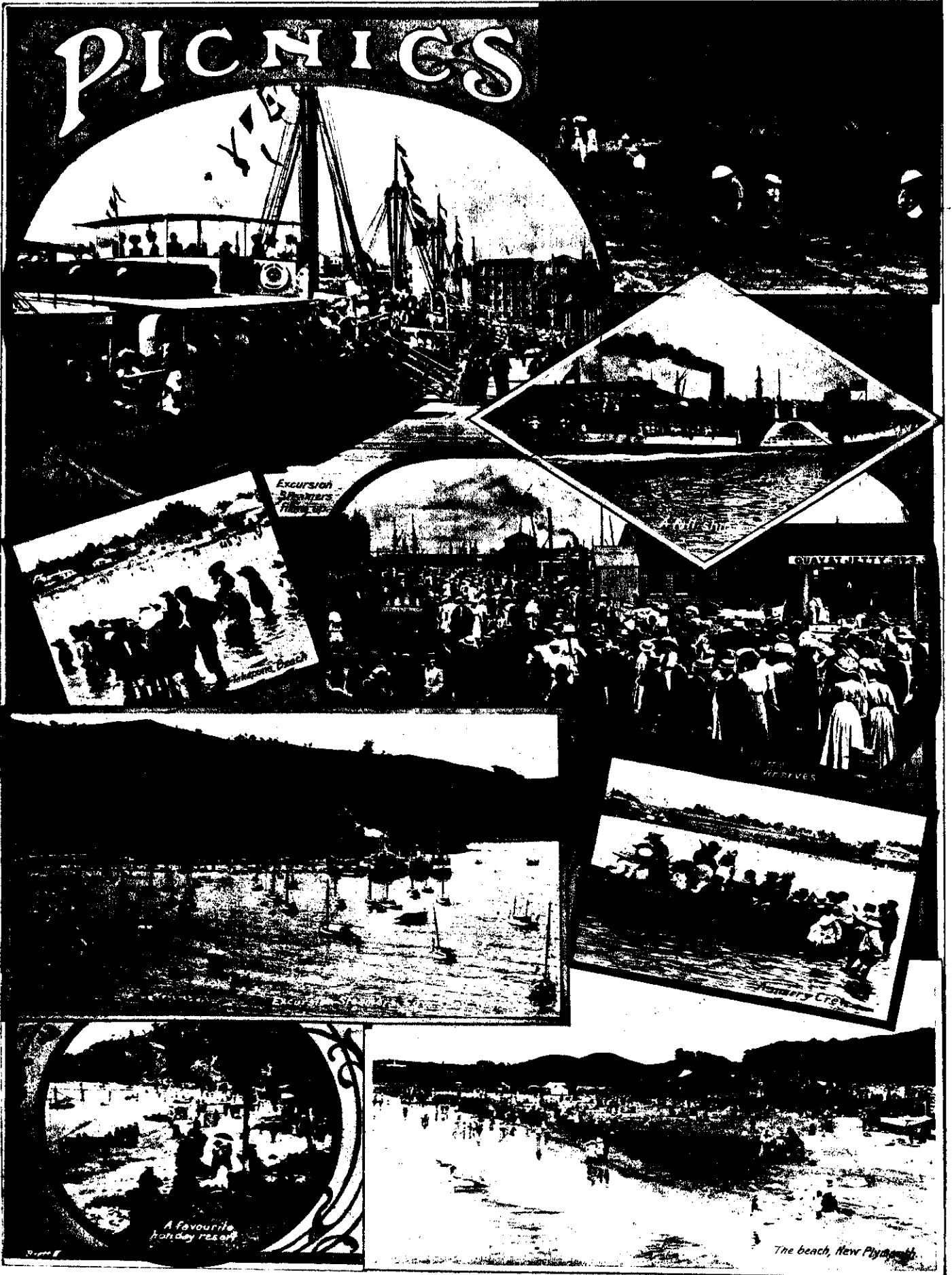
SUMMER AND WINTER.

TWO TYPICAL SCENES IN THE AGRICULTURAL AND PASTORAL LIFE OF THE DOMINION.



THE WATER BABIES OF MAORILAND.

LIFE, LAUGHTER AND SUNSHINE IN AND AROUND THE SHORES OF THE NORTH ISLAND.



THE HOLIDAY MAKERS OF MAORILAND.

SCENIC WONDERS OF MAORILAND

BY CHARLES C. READE.

NEW ZEALAND has been spoken of as the "Scenic Paradise of the World." Nature has made it a land of startling contrasts. In an area less by some 16,000 square miles than that of the United Kingdom, it embraces a marvellous conglomeration of boiling springs and geysers, lakes and inland seas, girt with bush-clad hills, snow-capped peaks that pierce the clouds, and gigantic fjords solitary amid the "beauty born of murmuring sound." The sublimity of the Swiss Alps and the grandeur of Norway's fjordland are combined there with a rich, natural beauty peculiar to the country itself. Loveliness is wedded to majesty. Just as there is but one London in a hemisphere of cities, so there is but one New Zealand in a world of scenic lands. London, amongst many things, is remarkable for its sameness, be it Hammer-smith or Poplar, Camden Town or Brixton; New Zealand is pre-eminent by its contrasts—contrasts that completely outstrip any comparisons that one may make in the British Isles.

Almost side by side with this wonderland of silent hills and waterways, Nature, with quaint caprice, exhibits a phenomenon. The centre of the North Island is a large lake called Taupo, situated at an altitude of 1,250 feet above sea-level. Some 50 miles due north are several smaller basins, including Rotoiti and Rotorua joined by a short channel. Between these upland waters, contained within an oval-shaped area, is the principal thermal region of New Zealand (see special plate presented with this number). It is a vista of pumice-strewn plains and grey hills, rising billow upon billow above valleys of boiling springs and hot steaming mud holes. The crust of the earth is honeycombed like one vast sponge.

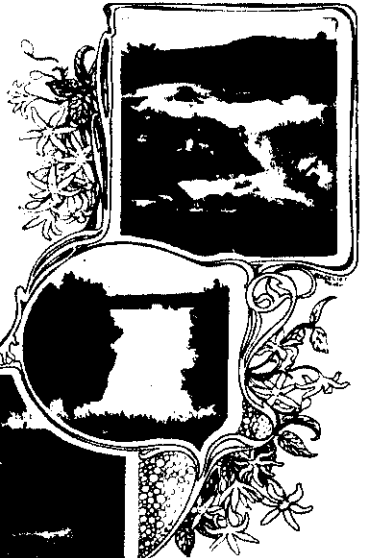
Nature has placed there the safety valves

for her mighty subterranean forces. Throughout this great volcanic region there is not one large active crater. South of Lake Taupo, sandwiched in between the desolation of Mount Tongariro and the rugged glory of Ruapehu, is Ngauruhoe, the splendours of whose eruptions is well depicted in these pages. Since the eruption of Tarawera in 1886, a mountain rising above a lake of the same name on the northern fringe of the thermal regions, New Zealand has suffered no serious disturbances. This is popularly supposed to be due to the constant activity of the springs and geysers, which are, in themselves, a spectacle of extraordinary and fascinating interest.

The central point of the thermal district is Rotorua, which is several hours' journey by rail from Auckland, the northern city of the Dominion. There is no volcanic region of the earth containing in quantity or variety such a wonderful collection of hot mineral springs as Rotorua. In a brief sketch it is impossible to describe the wonders around this tourist township, with its brightly-painted houses and gardens clustering down

cloud of steam. In the larger geysers, the force of the explosion is almost beyond words. The convulsion is appalling. Such things belong to the wildest and most imperious moods of Nature. Their titanic force is immeasurable. A planet bursting in fire across the heavens could not be more inspiring than a big geyser torn by eruption. It has the greatest that belongs to terrestrial bodies. It is inspired with the force behind creation.

But New Zealand has many other sights, as



taken place when the planet was in process of cooling.

As the great snowy Alps pursue their course to the South, the country splits up into a vast and irregular jumble of mountain heights, and such is the astonishing and bewildering configuration rising and falling incessantly at steep, precipitous inclines, that the whole country seems to be literally standing on edge. The jagged array of heights presented to the Tasman Sea gives some promise of what is to be found in those matchless inlets from the deep called "The Sounds," that wind in and out between thousands of feet of rock and mountain side. Where the sea has not swept in to complete the picture of the fjords of Southern New Zealand, the whole of the lower part of the west coast of the island is bejewelled with great inland seas or lakes, the beauty and fame of which are world-wide.

Past all the glories of Wakatipu, Wanaka, or Te Anau, one must rush (for space forbids) to linger a moment by the loveliest of lakes. Manapouri, with its matchless cathedral peaks soaring far into the clouds above its peaceful isle-dotted waters, is one of the sights of the earth. In contrast to the wild, jagged aspects of the typical mountain chains, there is a sublimity in the silent grandeur of the Cathedral Peaks that holds one wondering and breathless. Manapouri is the most poetical spot in all this land of shining waters. It is "the lake of the throbbing heart," to give the translation of the Maori name, and if ever a scenic paradise was conceived by Nature for her children, this still, silvery solitude, girt with ineffable peaks, would be its crowning glory.

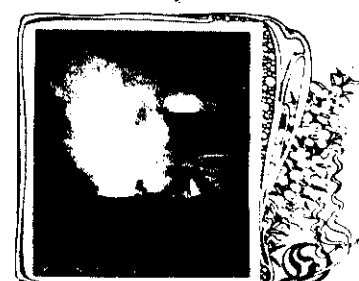
Milford Sound is the most sublime of all the New Zealand fjords. Its course winds through stupendous cliffs for nearly ten miles. It is hard to say which is the greater of its attractions—the numerous waterfalls that come tumbling over the precipices, or the splendid glaciers that issue from the remote solitudes of the mountains. It is a vast, supreme realm where, from the passing mood of sunlight and cloud to the deep, silent glories of the sunset, there is reflected the serenity of Nature wedded to the immortal note of the infinite.

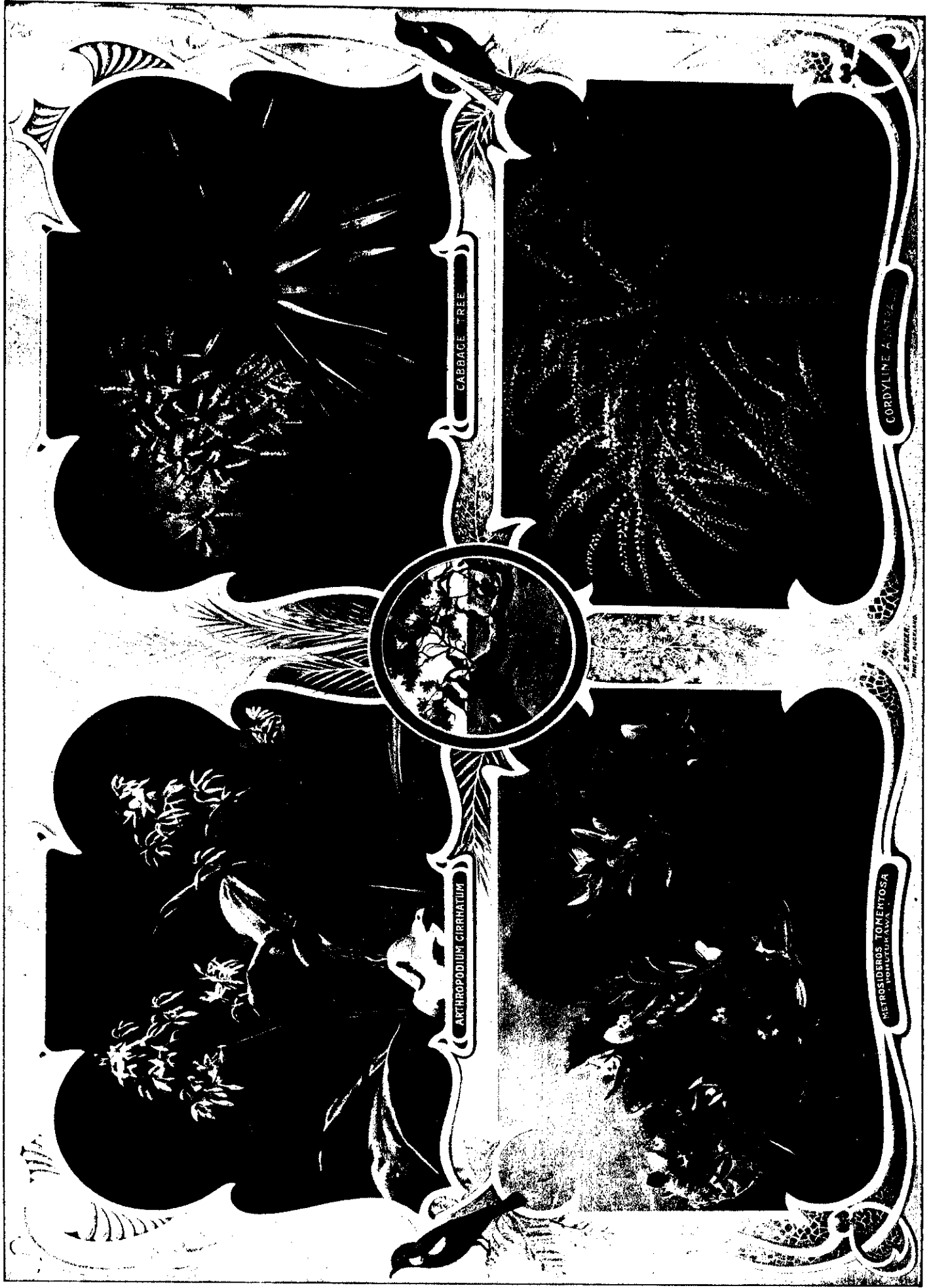


to the shores of the lake from which the town takes its name.

Two miles away the visitor will find one of the weirdest sights of the earth in Whakarewarewa—a basin of mud and limestone set between scrub-covered hills. The place is a vast zone of seething waters, sending up clouds of steam. One enters it as he would a valley of mystery. It is something charged with the portent of the unknown, a realm of black, blatant geysers, mud thrown into weird volcanic shapes, and hissing, bubbling waters veiled ever in rising steam. By day it inspires; one is enthralled to see Nature in a mood so passionate, if not diabolic. By night it threatens with the might of the infernal. It is the last of a once molten planet yielding to the force of evolution. Astonishment is succeeded by awe—awe gives way to fascination. Above everything, the geysers hold one spell-bound. Wairoa—a very fine example—is one of many that play intermittently. A muffled explosion precedes the eruption, and immediately a column of greyish black fluid leaps skyward, scattering like the spray of a fountain and throwing out a white

the pages of the *Christmas Graphic* show. The South Island is one of the most wonderful islands in the world. It presents a surprising variety of scenic attractions, from the sunny, sleepy beauty of the hills of Nelson and Marlborough in the North, to the gigantic splendour of the mountains of the South. One must not, of course, forget the Kaikouras—a magnificent group of mountains guarding Cook Straits. The Southern Alps, which rival Switzerland's in their white, naked glory, run down the west coast of the island—a wild and magnificent chain of heights which might not be inaptly described as the backbone of the country. They are noted for their wonderful glaciers and peaks, and the beautiful atmospheric effects which are continually producing some new aspect, some altogether fresh charm that is quite unexpected. In the heart of the Alps is Mount Cook, piercing the clouds at a height of 13,200 feet above sea-level (see special Supplement). To watch these great craggy solitudes, rising from jagged spurs and black precipitous faces of rock to the eternal snows, is to realise something of the titanic upheavals that must have





CABBAGE TREE

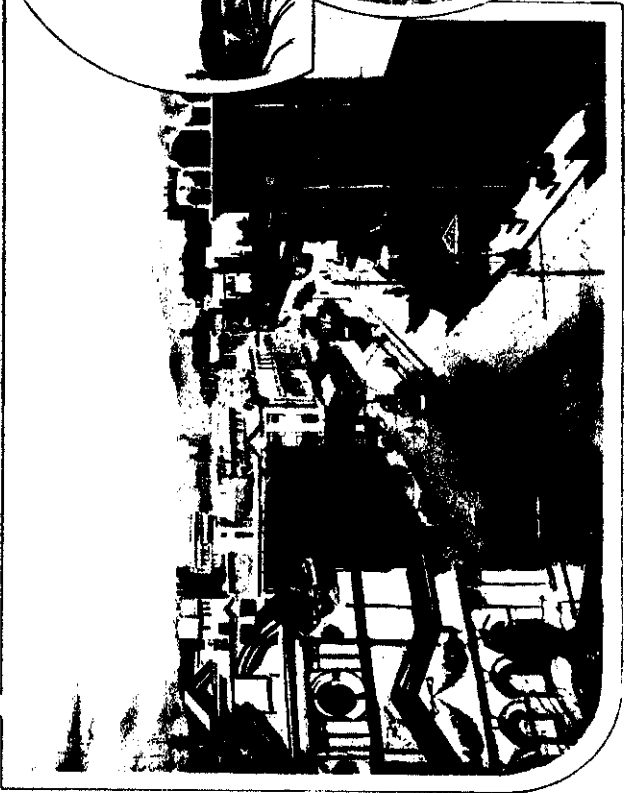
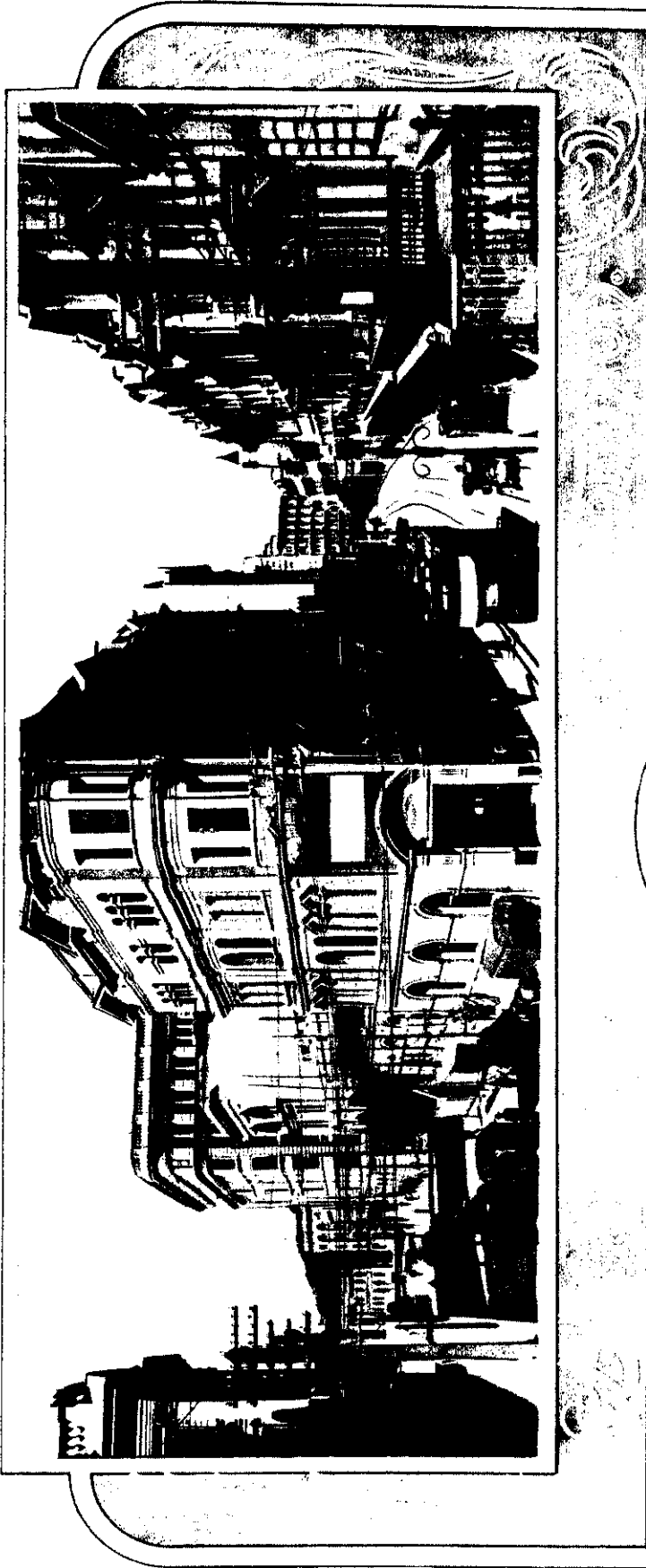
CORDYLINA AUSTRALIS

ARTHROPODIUM CERNUATUM

PETROSIDEROS TORMENTOSA
POHUTUKAWA

NATIVE FLOWERS OF THE DOMINION.

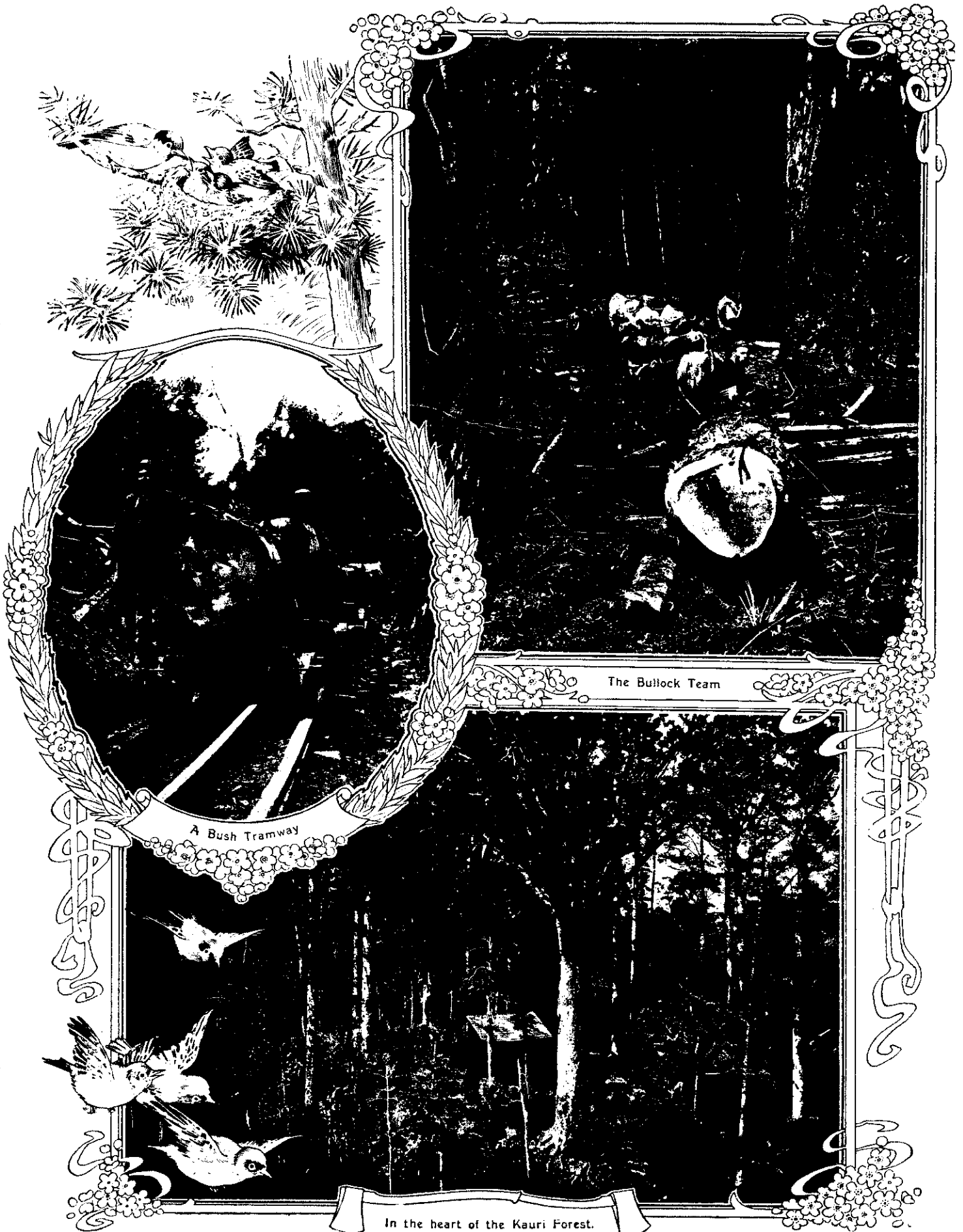
J. SMITHSONIAN INSTITUTION
WASHINGTON, D.C.



W. F. Tibbott, photos.

WELLINGTON, THE CAPITAL CITY OF NEW ZEALAND.

(1)—The junction of Lambton Quay and Grey Street. (2)—Lambton Quay from the summit of the new Public Trust Offices. (3)—Queen's Wharf, where overseas passengers are landed. (4 and 5)—Peeps of the Kelburne cable car service, which scales the heights surrounding the city.



The Bullock Team

A Bush Tramway

In the heart of the Kauri Forest.

WHERE THE FOREST BENDS ITS STATELY BOUGHS.

The New Monochrome Process.



Spring Blossoms.

Photographs taken and developed by the New Monochrome process are always charming and beautiful pictures. It is a flexible and ideal medium of expression, that enhances the picture with additional delicate tones.

For each sitting the negative is specially prepared by an artist, in order to secure an appropriate and harmonious background, the most important feature of an ideal photograph. This work enhances the beauty of the picture to a wonderful degree.

Visitors are cordially invited to view these very artistic photographic studies on exhibition at the Studio.

W. H. Bartlett,
Photographer,
New Studio, Queen St., Auckland,
and 10, Willis St., Wellington.

W. H. Bartlett
Photographer

Studios - Queen St. Auckland
& 10. Willis St. Wellington.



SHY SISTERS.



ON THE LAKE REST AND COSSIP.



A RIVER MAIDEN.



MAORI GIRLS—PRETTY TYPES OF A PICTURESQUE RACE.

MISSING PAGE

MISSING PAGE



Look at the Collar

Of nine coats out of every ten and notice how they stand out at the back—a small thing, may be, but one of the many little items that mark the difference between a poor and a well made suit.

ALL WEBLEY'S SUITS are guaranteed to fit perfectly in every way, or you can have your money back.

THE DEFINITION OF WEBLEY CLOTHES

"FASHIONABLE clothes, which are recognised all over Auckland and provinces by men who know, as the acme of perfection in good-service clothes."

The most cursory inspection will convince you that our styles are absolutely correct, that the Tailoring is of the highest order, and that the fabrics are of undoubted quality. To wear a suit of our garments will satisfy you that no other Tailor could fit you better—if as well.

Pick a Flaw, if possible, in our Suits!

Turn them inside out—every little detail shows the hand of the Master Tailor. No hurried work, no skimping, nothing slighted—that is why they fit so perfectly and hold their shape so much better than any others.

If you spend your money in clothes, you certainly want the best value for it—then visit

FRED WEBLEY,
THE QUALITY TAILOR,
Queen St., AUCKLAND.
(Next Union Bank and opp. Security Bldg.)
When ordering please mention this paper.



*No fit
No pay
That's
Webley's
Way!*

SAMUEL COCHRANE & SON

LIMITED.

**AUCTIONEERS,
REAL ESTATE AGENTS,
VALUERS, and
HOUSE FURNISHERS.**

SALES.
Furniture Sales
At the Mart every Tuesday and Friday.
Outdoor Sales
As advertised.
Land Sales
As per Arrangement.

*The Oldest and Most Spacious Mart in the City.
The Place for Healthy Competition.*

**199 QUEEN STREET,
AUCKLAND.**

AUCTION MART
BY FURNITURE & LAND
SALE ROOMS

COCHRANE & SON
LIMITED

SAMUEL COCHRANE & SON LIMITED
AUCTIONEERS

SAMUEL COCHRANE & SON LIMITED
LAND AGENTS & VALUERS

W. S. COCHRANE, Chairman of Directors. Established 1859. A. E. SLOMAN, Manager and Secretary.



S. Rawnsley

Kauri Gum Merchant.

Branches at
WHANGAREI, POROTI
TITOKI and PARAKAO.

Warehouse and Office:
QUAY STREET, AUCKLAND.

FIRST LINE of DEFENCE

BUY BRITISH GOODS and
BUY THE BEST.

✻

FRY'S COCOAS and CHOCOLATES

Have stood the Test for 200 Years.

300 GOLD MEDALS and DIPLOMAS.


W. H. DAWSON,

Chemist, Druggist and Surgeon Dentist.
Importer of FIRST CLASS DRUGS and CHEMICALS.

<p style="font-size: small;">SOLE MANUFACTURER OF THE CELEBRATED KOFF-NOT THE BEST and QUICKEST REMEDY FOR COUGHS and COLDS.</p>	<p style="font-size: small;">DAWSON'S CORN CURE AN INFALLIBLE REMEDY. NO PAIN, EASILY APPLIED.</p>
---	---

Prescriptions accurately prepared with the Best of Drugs. Teeth Extracted.

QUEEN ST., AUCKLAND.




LE ROY

THE TENT and COVER PEOPLE
48, Queen St., Auckland.

Tents and Flys, Marquees, Camping Furniture, Verandah Blinds, Flags, Etc., Etc. Hundreds of Tents and Flags for Hire. Order early to avoid disappointment. Price Lists free on application.

TASMANIAN TOURISTS TRIPS.
ATTRACTIVE PEOPLELAND.
SPLENDID SCENERY.
MAGNIFICENT MOUNTAINS.
ADMIRABLE ATMOSPHERE.
NUMEROUS NARROWS.
INTERESTING ISLANDS.
ABUNDANT ANGLING.

PAMPHLETS GRATIS ON APPLICATION TO
 SECRETARY, TASMANIAN TOURIST ASSOCIATION,
HOBART.



A VERY POPULAR SOAP.

When a Brand becomes a general favourite the fact must appeal to all that it possesses Exceptional value.

Now TANIWHA

Gives a very speedy and effective lather and is so pure as not to hurt a baby or injure the most delicate fabric. So many simply say to their grocer "a bar of Soap please," but as You require a soap that cannot be excelled in the art of Soap making then say "Please give me a Bar of—"

TANIWHA

Thousands who attended the last Exhibition were amazed at the practical demonstration of the speedy and wonderful lathering properties of this famous and popular brand.



SYLVIA STARCH IS THE BEST.

REGISTERED.

Every Woman appreciates a good article and this popular brand - Never fails to give satisfaction. Is the best manufactured. Is the very best for high-class work. Is guaranteed a pure new article. Always ask for 1 lb. boxes. See Label.

SYLVIA STARCH

HIGHLY PRAISED BY LAUNDERS EXPERTS

(Sid) **CLARKE BROS.** (Chappie)
 Late Davenport & Son.

The Best House for Furniture.



**FURNISHINGS
 CARPETS
 LINOLEUMS
 HEARTH RUGS
 CURTAINS**

Drawing and Dining Room Suites.


Furniture Made to any Design in any Wood.
 YACHT CUSHIONS a Specialty.

ALL WORK GUARANTEED. CATALOGUES ON APPLICATION.

Country Orders Packed and Delivered at Station or Boat Free.

**KARANGAHAPE ROAD
 NEWTON, AUCKLAND.**

JAMES WEIR



**FUNERAL DIRECTOR
 AND
 UNDERTAKER**

A CHOICE SELECTION OF WREATHS IN STOCK.

All Night Attendance. Phone 1333.

Ponsonby Rd., Auckland
 (Opposite Western Park).

King's Court Private Hotel,
UPPER QUEEN ST., AUCKLAND.

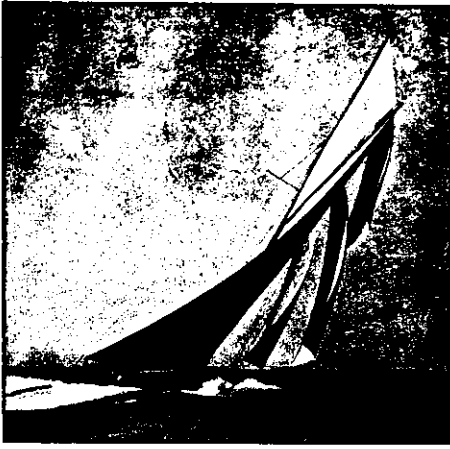
THREE MINUTES FROM SYMONDS ST. CAR.
 STOPPING PLACE CEMETERY BRIDGE.



MR. G. USHER.

TERMS MODERATE

A Tennis Court and large Social Hall (for dancing, etc.) are included in its attractions.



Lipton Ltd. are Tea Merchants
by special appointment



to His Majesty
King Edward VII;

AND
Their Teas have the **LARGEST SALE** in the
World.

Four Qualities to suit all tastes.

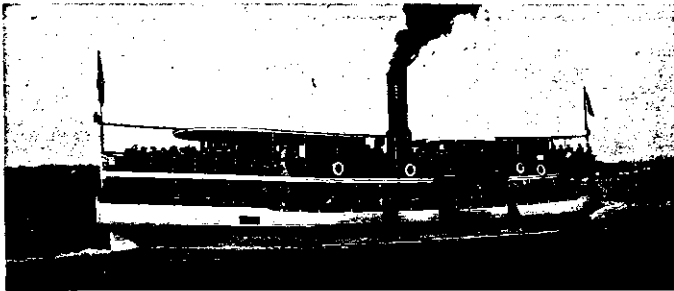
LIPTON'S TEAS

Packed in 1/2 lb. and 1 lb. Packets. 5 lb. and 10 lb. Tins.

E. ELLINGHAM & Co., Ltd., Wholesale Agents,
AUCKLAND.

LIPTON, LTD., are not yacht builders, but Sir Thomas Lipton is a keen yachtsman, and head of the well-known firm of Tea Merchants.

THE Devonport Steam Ferry Co., Ltd.



TOWAGE of all descriptions done at reasonable rates. Steam Tugs S.S. "Pelican" (twin screw), P.S. "Lyellton," S.S. "Young Buzzae."
STEAMERS FOR HIRE for excursions of all descriptions at moderate rates. Steamers and Steam Launches for cruising and extended trips. Comfortable Cabins, etc.
FERRY SERVICES to Devonport, Stanley Bay, Northcote, Birkenhead and Chelsea Districts. Steamers leave at short intervals daily from 6.30 a.m. to 11.50 p.m.
DAILY STEAM SERVICE to St. Helier's Bay. Weekly Steam Service to Motutapu Island, leaves Auckland 9.30 a.m. Sunday.
CONTINUOUS SERVICE Day and Night, to and from Devonport. The Cheapest and most Efficient Ferry Service in the Dominion.

FARES:

Family Annual Ticket (not including sons over 21), £5. WEEKLY TICKETS—Family, 4s.; Gent's, 2s.; Ladies', 1s. 6s.; Apprentices, 1s. No Limit to number of trips.
RETURN, 6d.; SINGLE, 4d.; CHILDREN, Half-Price. Cards of 24 Single Tickets, 4s.

Excursions on all Holidays to the various Beauty Spots on the Waitemata.

TELEPHONE 246. ALEX. ALISON, Manager.

WHERE TO STAY
IN
AUCKLAND
NEW ZEALAND.

CARGEN'S RESIDENTIAL HOTEL.

4 to 10
CRESCENT

near
GRAND HOTEL
AUCKLAND.

TARIFF:
FROM 8/- PER DAY
(Includes Charge for Bed, Bath, etc.)

REAL PARTICIPATION FROM
THOS. COOK & SON
BOOKING AGENTS.



D. MEIKLE'S Valu House.

THE LADIES' EMPORIUM, 70, Newton, is where you obtain the necessary Garments to complete your outfit. Smart Millinery, Costumes, Gowns of all Descriptions, Skirts, Underclothing, Children's Gaiters, and all Baby Requisites. We also stock all Household Linen, Cotton and Woollen Dress Fabrics, Silks, Gloves, Neckwear, Belts, Hosiery, and all the Newest and Latest Goods required by Ladies, and at Prices that command attention. We invite your inspection and will not unduly press you to buy. We are looking for Business and are not looking for high prices. We want you to be one of our patrons. We will, if you reside in the City, give you our best attention; if you reside in the country, take a personal interest in attending to your orders by post, and executing them in the same manner as if you were ordering the Goods personally in our Emporium. Posters sent on application, Post Free.

ALL GOODS OVER THE VALUE OF 20/- also sent POST FREE. OUR TERMS ARE—CASH WITH ORDER. Any Goods sent, not approved of, can be returned (if in good order) within seven days and exchanged, or money returned. We wish to make Shopping by Post as easy as possible, and profitable to our patrons. You must remember we buy and sell for cash at keener prices. We are in the cutting centre of Auckland, and always give Value for Value at—
Valu House, D. MEIKLE, 70, Newton, Auckland.
N.B.—When in town call on us—14. fare from Queen Street lands you almost at our door, right in the busiest retail centre in New Zealand.

ADVANCE AUCKLAND.

OUR LEADING
WINE & SPIRIT MERCHANTS

DUFAUR & LEES

44, QUEEN STREET, AUCKLAND.

They have the largest and best assorted
stock of good liquors in the Dominion.

Call, Ring-up, or Write
for Quotations.

**THEY STOCK
EVERYTHING**

PHONE No. 43.

FATHER CHRISTMAS
AT
PONSONBY'S BIG STORE



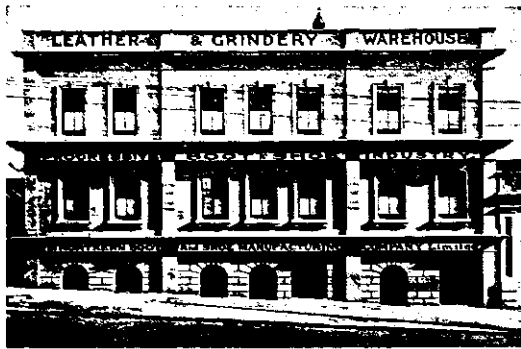
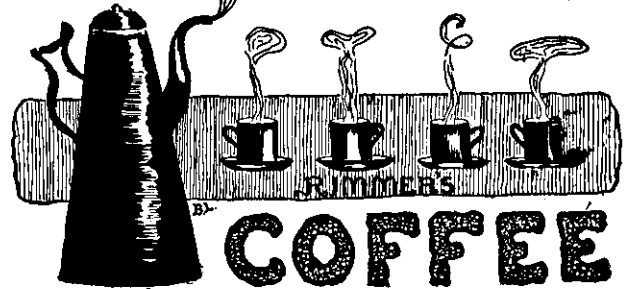
WALTER LAMBOURNE'S

Stores will be filled with happy purchasers this Christmastide, because the bargains will be evident in every department. Why not get ready for Christmas by visiting WALTER LAMBOURNE'S and selecting the articles you need to make the home more comfortable and more cheerful.

There is a wonderfully complete array of Crockery and Glassware, beside all the household labour-saving devices in Ironmongery. And, as is well known, no furniture quite comes up to the excellence of LAMBOURNE'S, nor can it be sold so cheaply.

BEFORE CHRISTMAS, AT CHRISTMAS, AFTER CHRISTMAS
VISIT

WALTER LAMBOURNE'S
IRONMONGERY, CROCKERY and FURNITURE WAREHOUSE,
Three Lamps, Ponsonby, AUCKLAND.



Hobson Street Frontage.

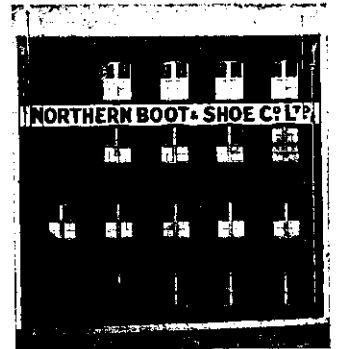
New choice Leathers are also being introduced for the first time. Samples on view in our extensive new Warehouse. Largest assorted Boot and Shoe Stock in Auckland.



New Creations in Lasts and Leathers

The very latest models in English lasts, made specially to our order, have arrived to enable us to supply the very latest and most popular styles in Footwear for Spring, 1909.

HIGH-GRADE
FOOTWEAR



Customs Street Frontage.

The Northern Boot and Shoe Manufacturing Company, Limited
Manufacturers and Importers

THOMAS HODGSON,
Manager and Secretary.

IGNITION CELLS
FOR
MOTOR CARS
AND
LAUNCHES.

ERNEST J. FENN,
ELECTRICAL ENGINEER,
FORT STREET
AUCKLAND.

Supplies and erects everything
Electrical,
From Electric Bells to Complete Town
Lighting Plants.

JAMES HARGREAVES
VENTILATING ENGINEER.
SOLE PATENTEE AND MAKER OF THE
"IDEAL AIR INLET, and IDEAL EXTRACTOR."



These Extractors are positively the best on the market. The action being so constructed inside that it is impossible for any foul air to lodge behind the vanes, and at the same time being free from draught. Perforated zinc is fixed at the edge of each outlet which cannot be seen only on close examination, and which prevents birds gaining an entrance or nesting.

Rise made of galvanised steel 3/4 gauge, outside vanes 22 gauge.

The "Ideal Patent Inlet" is absolutely noiseless and airtight. By turning two catches the door falls down, the buffing plate can be raised, and by means of a brush or cloth can be cleaned out in a few seconds.

The amount of fresh air can be regulated, and it is constructed that it will remain open in any position desired.

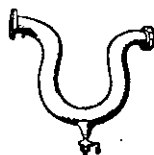


EDEN TERRACE, AUCKLAND.
BEST OF WORKMANSHIP GUARANTEED. Telephone 2516.
For Prices and Designs apply to local Architects or above address.
Over 30 Designs. Freight: F.O.B. Auckland.

TELEPHONE 385.

Private Address:
33 Wanganui Avenue, Ponsonby.

Wm. MENZIES



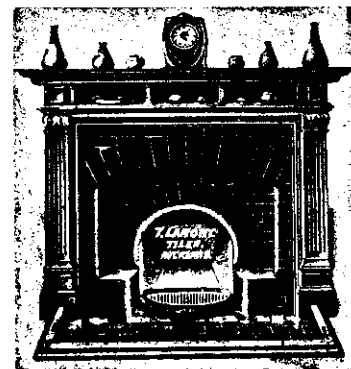
COPPERSMITH,
BRAZIER, PLUMBER,
METAL WORKER,
ETC.

WORKMANSHIP GUARANTEED.

MARINE,
CONFECTIONARY and
GENERAL WORK
DONE.



54, CUSTOMS ST. EAST, AUCKLAND.



Telephone
No. 1930

P.O. Box 743

A B C Code
5th Edition.

Thomas Lamont,

Practical Tiler, Importer and Grate Builder.

Every description of Wall and Floor Tiling and Marble Terrazzo, Air Pit Fires, Tintura, and Register Grates. Tiles and Grates sold from Stock. Wholesale and Retail Contracts carried out in any part of the Dominion.

King's Court Buildings, Queen St. (Upper), Auckland

President:
HIS EXCELLENCY
THE GOVERNOR
Vice-President:
A. OLMENTS, ESQ.
Manager:
B. CAMERON.

Amount at credit of 41,572 Depositors on Jan. 1st, 1909.
£1,145,883 5s. 11d.

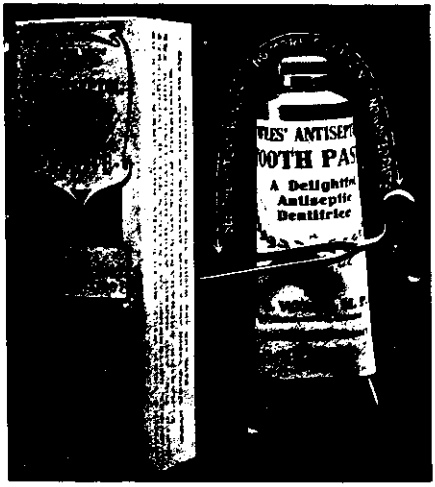
ESTABLISHED 1847.

Reserve Profits,
£80,258 0s. 6d.

Auckland Savings Bank

Deposits of ONE SHILLING and upwards are received. **Head Office:** QUEEN ST., AUCKLAND. Interest allowed at the rate of 4 per cent. per annum up to £100.

Branches:
MANUKAU RD.,
HEWMAKERY
QUEEN ST., ONEHUNGA
POMEROY RD.,
GREY LYNN
VICTORIA RD.,
DEVONPORT



Don't Read This

If you have no teeth. If you have teeth ask yourself these questions!
Am I as good-looking as I ought to be? If not, why not?
Clean teeth are an ornament to any face. To get such teeth

USE WILES' ANTISEPTOL TOOTH PASTE

(THE BEST PASTE IN THE BEST TUBE.)
Antiseptol means good teeth. Good teeth means good digestion, which means health.
WRITE NOW FOR A TUBE. Price 1/3 post free.

WILES, CHEMIST, 26 Queen St., AUCKLAND



Those who do not like a paste should use ANTISEPTOL TOOTH POWDER. Price 6d., 1/-, 1/3 post free.

OIL ENGINES

"KAPAI"

4 Cyl. low tension ignition, slow revolutions, magneto supplied.

Full particulars and prices on application to—
Arthur & Dormer Engineers NELSON ST.
Phone 1913. AUCKLAND

JOHN TURNER & CO.
HATTERS, MERCERS, CLOTHIERS & OUTFITTERS
MANUFACTURED EXPRESSLY FOR JOHN TURNER & CO. CORNER OF QUEEN & QUAY STS. AUCKLAND.

The Season's Greetings

OUR numerous, and still increasing list of both Town and Country Customers, which is a REAL TESTIMONY that our POPULAR CASH PRICES and STERLING VALUES are based on sound principles and give every possible satisfaction. If you are not now a Customer of ours, may we solicit a trial order, we guarantee you complete satisfaction or refund purchase money. Can you wish for fairer treatment than that? Should you reside in the Country, mail your requirements, they will receive our best attention, freight paid on all parcels to nearest Port or Railway Station.

Here are a few quotations of sound and reliable goods that may interest you:—

Men's Straw Hats	3 6	4 6	5 6	6 6
" Real Panama	15 6	25 6	35 6	37 6
" Flexible Felt	5 11	7 6	8 11	10 6
" Soft Felt	3 11	7 6	8 11	10 6
" Tennis Shirts	2 6	3 11	4 11	5 11
" Neglige Shirts, Bds.	3 11	4 11	5 3	..
" Tunic	4 11	5 11	6 11	..
" Ceylon	4 11	5 11	6 11	7 11
" White	3 11	4 11	5 11	6 11
" Pyjama Suits	4 11	5 11	6 11	9 11
" Cashmere Half Hose	1 6	1 6	1 9	1 11
" Knit Wool Hose	1 6	1 3	1 6	..

Men's Superior Style and Finish Ready-to-Wear Suits in the very latest patterns, Tweed and Worsted (any size).

Tweed	25 6	29 6	35 6	37 6	..
Fancy Worsted	42 6	47 6	55 6	59 6	65 6
Blue Serge (Fine)	45 6	55 6	65 6
" " D.B.	55 6	59 6	65 6

Saddle Tweed Trousers 9 11 10 6 12 6 15 6 16 11
Fancy Worsted Trousers 10 6 12 6 15 6 16 6 ..

Also, a large and well assorted stock of Ties, Bows, Linen and Celluloid Collars, Caps, Umbrellas, Braces, Underwear, Travelling Bags and Trunks, Bags, etc., etc., at our Popular Cash Prices.

JOHN TURNER & CO., HATTERS, MERCERS, CLOTHIERS AND OUTFITTERS. "The Clobbery," Corner QUEEN & QUAY STS., AUCKLAND.



BIG PROFITS IN POULTRY

By Consigning them to

J. JONES, Victoria & Lorne Streets, AUCKLAND.

Grain & Produce Merchant, Land, Estate and Furniture **Auctioneer.**

Highest Prices obtained for all Goods sent for Sale, and Account Sales immediately remitted. Manures, Fertilisers, and all kinds of Seeds on Sale.

Established 1883. SPECIAL ACCOMMODATION FOR POULTRY and PIGS. Bankers—Union Bank of Australia.



TRY ONE OF
The British Woollen Co.'s
TAILOR-MADE
SUITS to MEASURE

AT
60/- 70/- 80/- & 85/-

A magnificent range of New Season's Patterns to choose from, and we Guarantee Absolutely a Perfect Cut and Fit.

ALL COATS TRIED ON AND MADE BY HAND ON THE PREMISES BY FIRST-CLASS TAILORS.



Only one address— Patterns sent Post Free to any Address.

THE BRITISH WOOLLEN CO.,
OPPOSITE POST OFFICE,
175-177, Karangahape Road, Newton, Auckland.

CHAPPELL & COURTENAY Are **Plumbers.**

Telephone 1782.

6, WAKEFIELD ST., AUCKLAND.

JOHN M. WALKER,
ARCHITECT
and Building Surveyor.

HIS MAJESTY'S ARCADE, AUCKLAND. Telephone 1849.
Correspondence Invited.

DR. F. O. POPE
DENTIST

(D.D.B., UNIVERSITY PENNSYLVANIA).

PALMERSTON BUILDINGS (1st Floor),
ABOVE UNION S.S. COMPANY,
QUEEN STREET, AUCKLAND.

Mr. B. S. FINN,
DENTAL SURGEON,

37, LOWER QUEEN STREET, AUCKLAND. 'PHONE 1988.
(OPPOSITE RAILWAY STATION).

G. J. MILLER,
COMMERCIAL BROKER,
AUCKLAND.

Box 162 G.P.O., AUCKLAND

Mr. A. E. Chayes,
DENTAL SURGEON.

VICTORIA BUILDINGS,
VICTORIA STREET, AUCKLAND. Telephone 2565.

Assay Office and Laboratory,
85, Shortland St., Auckland. Tel. 2611.

ARTHUR T. FIRTH,

MINING and METALLURGICAL ENGINEER.
ANALYTICAL and RESEARCH CHEMIST
Gold, Silver and Platinum extracted from Jewellers' and Dentists' Sweep at my Suburban Office.

"IRONBARK" Brown Wrapping Paper.

THE STRONGEST, CHEAPEST, AND BEST.

Manufacturers: RAMSBOTTOM, LYONS & Co., Nicholas Croft, High St., Manchester, England.

SOLE AGENTS FOR NEW ZEALAND:

LEONARD & HARRISON, Ltd.,

Temporary Address—
27, HIS MAJESTY'S ARCADE,
Queen Street, Auckland.



E. GOODWIN, Dominion Auction Mart
167, Queen Street.

Auction Sales of up-to-date new and second-hand furniture every Tuesday and Friday at the rooms.

Outdoor Furniture Sales undertaken, and every satisfaction guaranteed.

SEND YOUR GOODS TO US TO RECEIVE GOOD PRICES AND SATISFACTION.

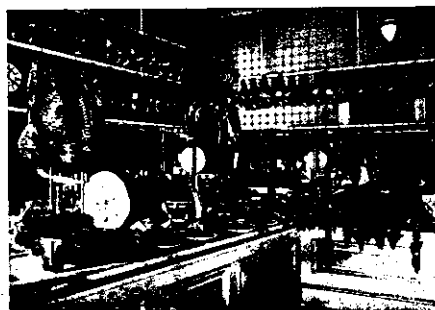
VALUATIONS GIVEN. VALUATIONS GIVEN.
Properties for Sale in Suburbs and Country.

E. GOODWIN

AUCTIONEER, VALUER and PROPERTY AGENT
167, Queen Street, AUCKLAND.

THE VERY BEST

A TREAT FOR EVERY HOUSEKEEPER.
THE RIGHT PLACE FOR APPETISING DELICACIES.



Selected Goods:
PORK, POULTRY,
HAMS and BACON,
for good eating.

ALL DAIRY FED.
ALL YOUNG.

A Selection of the
tenderest and juiciest
meat, sweetest fla-
vour. Always the
best for your money.

QUALITY FIRST.

FISCHER BROS.

PORK BUTCHERS and BACON CURERS.

316, QUEEN STREET, AUCKLAND.

LA CARO
F. Neve, N.A., LL.B.
 Barrister and Solicitor

7 & 8, COLWILL CHAMBERS,
 SWANSON STREET,
 AUCKLAND. TELEPHONE 2748.

NAPIER & SMITH
 BARRISTERS and SOLICITORS

2, 3, 4 & 5, SECURITY BUILDINGS
 QUEEN ST., AUCKLAND. Solicitors for Advances
 to Settlers' Department.
 Money to lend on land at low rates of interest.

TELEPHONE 1770.

P. B. MORRIS,
 SURGEON DENTIST.

BANK BUILDINGS,
 SWANSON ST., AUCKLAND.

Mr. H. D. CRUMP
 DENTAL SURGEON

266, QUEEN STREET,
 AUCKLAND. TELEPHONE 1210.

Mr. ROY E. BRIDGMAN,
 DENTAL SURGEON
 (Late with A. M. Carter).

CORNER DOMINION AND
 VALLEY ROADS,
 MT. ROSKILL. 'PHONE 1385.

G. SELWYN GOLDSBRO', F.I.Z.T.A.
 ARCHITECT.

320, Victoria Arcade, Auckland.
 Specialist in Freezing Works and Abattoirs.

CABLE ADDRESS: "IOTA," CODE: ABC, 5TH EDITION.

W. F. UTTING,
 Custom House and Commission Agent,
 Island Trader and Copra Merchant.
 117, VICTORIA ARCADE, AUCKLAND.

W. A. CUMMING, F.N.Z.I.A.
 ARCHITECT.

304, VICTORIA ARCADE,
 QUEEN STREET, AUCKLAND.

B. C. CHILWELL, A.R.I.B.A.,
 ARCHITECT.

Telephone No. 2548. Phoenix Buildings,
 Box 497. Queen Street, Auckland
 (opp. Railway Station).

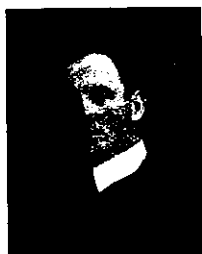
ESTABLISHED, 1860. TELEPHONE, 1213.

J. HENDERSON,

Painter Signwriter, Decorator, Etc.
 HIGH ST., AUCKLAND Glazier, Paperhanger
 Mixed Paints for House and Ship use. Special Black for School Boards.
 N.B.—The above Executed at Moderate Charges. Estimates Furnished.

The Auctioneer You Want

To
 Sell
 Your
 Furniture.



To
 Sell
 Your
 Property.

GEORGE WALKER
 GENERAL AUCTIONEER,
 188, Queen St., Auckland.

R. J. ROACH & CO.

General Engravers.

DIE SINKERS, LETTER-CUTTERS
 AND
 RUBBER STAMP MAKERS.

38, Wellesley Street West,
 AUCKLAND.

*PHONE 2556.

TELEPHONE No 473.

F. JAGUSCH.

MANUFACTURER and IMPORTER

of

RATTAN, BAMBOO and WICKER
 WARE of every description.

Customs Street West,
 .. AUCKLAND ..

THE MOST BEAUTIFUL
 WOMAN IN THE WORLD.



LA MILO, the most perfect woman of the age says:—"I
 have much pleasure in giving my exclusive testimonial for
MILOS SKIN FOOD. It is the best I have ever used,
 and I can honestly recommend it."

MILOS SKIN FOOD

For face, neck and arms. Completely eradicates lines,
 wrinkles, crownfeet, &c. Leaves the skin fresh and pure,
 free from spot or blemish. Price 3/9 a jar, post free.

MILOS HAIR RESTORER

Quickly restores grey or faded hair to its original colour.
 The ONLY restorer which restores the COLOR and
 PROMOTES the GROWTH at the same time. Is not a dye,
 is not GREASY and will not STAIN. Price 7/6 a bottle.
 Post free.

All Consultations Free personally or by
 letter. If you cannot call write your
 troubles and benefit by my experience.

Miss McELWAIN
 TOILET SPECIALIST
 254, QUEEN STREET, AUCKLAND.

Melanyl
 MARKING INK for LINEN.

Inventors and Makers—COOPER, DENNISON & WALKDEN, LIMITED, LONDON

Warranted Indelible
 and Harmless on any
 Fabric. Requires no
 Heating or Mixing.

IN ONE BOTTLE.

Try it once, and
 you will use no
 other kind.

ENGINEERING

— IN —

All its Branches

Instruction by Class and
 Correspondence for all Marine
 and Land Certificates in
 Steam and Oil.

Mechanical Drawing, Mathematics
 170 PASSES
 for Year ending 31st May.

**AUCKLAND SCHOOL FOR
 ENGINEERS.**

Principal—Jas. W. DOWDY, Mining
 and Mechanical Engineer
 TYRINE BUILDINGS AUCKLAND.

F. A. Rich, B.Sc., M.A.M.E., etc. F. J. Roche, M. I. Mech. E.
 Coines: Bedford, McNeill, Murray & Seal.

RICH & ROCHE,
 Consulting and Contracting Engineers,
 21, FORT STREET, AUCKLAND, N.Z.

Reports, Estimates and Specifications made, and all descriptions of
 Civil, Mechanical and Mining Engineering Works undertaken.
 Reinforced Concrete Designing and Construction a Speciality

H. GILFILLAN, Junr.
 F.I.A.N.Z.

Accountant

COMPANY SECRETARY
 AND
 MANAGER.

108 and 109 VICTORIA ARCADE
 AUCKLAND, N.Z.

Mr. G. W. SMITH,
 Dental Surgeon.

CITY CHAMBERS (Top Floor)
 Corner of Queen and Victoria Streets, Auckland.
 Consultation Hours: 9 a.m. to 5 p.m. Saturdays, 9 a.m. to 1 p.m.
 *Phone 2831. Take Elevator.

F. H. WILLIAMSON
 Barrister, Solicitor, Attorney
 and Counsellor-at-Law

103, VICTORIA ARCADE. QUEEN STREET,
 FIRST FLOOR. AUCKLAND, N.Z. TELEPHONE 1220
MONEY TO LEND ON ANY APPROVED SECURITY.

RICHARD ARTHUR & Co. General Auctioneers,
 AUCKLAND, N.Z. Est. 1859.

HOUSEHOLD FURNITURE. LAND & ESTATE. PRODUCE, FRUIT and POULTRY.

A. & G. PRICE,

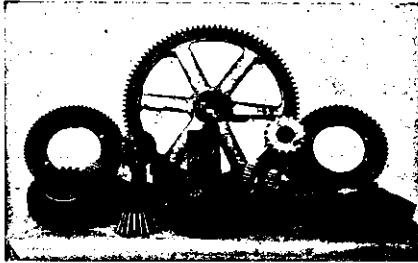
LIMITED.

MAKERS OF MINING, CRUSHING, SAWMILL AND GENERAL MACHINERY.

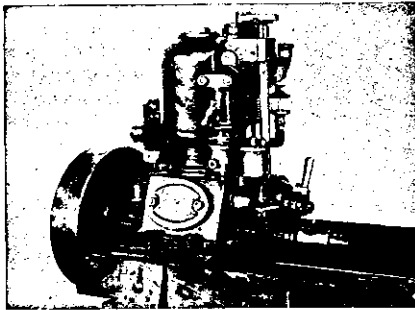
Flax Machinery a Speciality.

Sole Makers and Patentees of the PELTON WHEEL For New Zealand.

Makers of all class of Steam Engines, Land and Marine.



ENGINEERS, BOILERMAKERS, BLACKSMITHS, IRON and BRASS FOUNDERS.



Special Machinery for Motor Car Work and Gear Cutting.

Makers of "PRICE" Marine Oil Engines

3 1/2 H.P., 5 H.P., and 10 H.P.

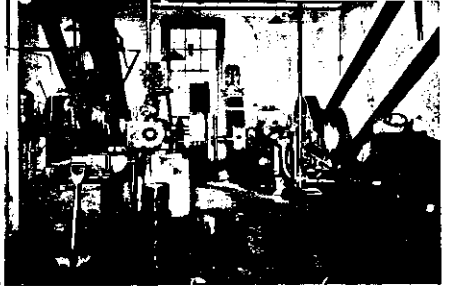
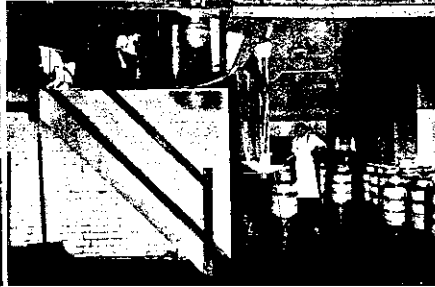
Head Office: THAMES, N.Z.

Branch at QUAY STREET, AUCKLAND, NEW ZEALAND.

What do You Think of This?

SOLD EVERYWHERE.

One Tin Sufficient for 8 Pints.



Three Views of our Factory at Mangere, where the Most Up-to-date Plant is installed for the Filtering, Pasteurising, and Chilling of Milk.

AMBURY, ENGLISH & CO.

DAIRYMEN, FARMERS, BUTTER MANUFACTURERS AND EXPORTERS.

Don't "Worry" about your Milk Supply!

We make it our business to save Customers the need. Our Milk is

Filtered

That means *Clean Milk*

Pasteurised and Chilled

(by which bacteria life is destroyed)

That means *Pure Milk*

And in addition to this we guarantee that the Milk is delivered with the full natural Cream, and without the addition of any preservative of any description.

What about Butter?

Certainly! We have the Best. The "Star" of the Butter Trade, and deliver it at your door at any address in the Town and Suburbs.

The increase in sales each year bears witness that

we give Patrons just what they want—

THE BEST.

And... What about Baby?

Just what we were going to mention. There are hundreds of Babies who have been built up and strengthened by our

Humanised Milk

and we frequently receive letters of appreciation and gratitude from mothers whose little ones have been saved to them by our Milk. We have a Nurse in daily attendance, qualified and trained in the work, and all advice and visiting is without charge. If Baby's food worries you kindly call or ring up **Phone 453.**

DEPOT—Karangahape Road.

BRANCHES—Ponsonby Road, Symonds Street, Hobson Street, Devonport, Parnell, Mt. Eden, Jervois Road and Epsom.

J. MORRIS

22, Karangahape Road
AUCKLAND.

J. MORRIS The GREAT HOUSEHOLD STORES
Everything for the Home MARVELLOUS PRICES | LOOK at our FAMOUS 1 & 6th WINDOW



For the Housewives of Auckland there is nothing more important in this issue than this page.



What does this photograph represent?

By far the most up-to-date, wide-awake Household Stores in Auckland, personally conducted with expert knowledge and absolutely rock-bottom prices.

The Photograph is something, but it is the reality that will interest, delight and surprise you. Visit us and Judge.

EVERYTHING FOR THE HOME.

Ironmongery China Glass Enamelled Ware
Aluminium Ware Stationery Leather Goods and Toys

ENDLESS VARIETY, FROM A PENNY TO A £.

Our Christmas Toy Display and our Prices will be things to Remember.

J. MORRIS 22, KARANGAHAPE ROAD,
AUCKLAND.

THE COURT RULED IT WAS FOR "THE PUBLIC GOOD"



CHAMPION OF THE FIELD FOR QUALITY AND STANDARD COURAGE!

BRISCOE & CO. LTD.

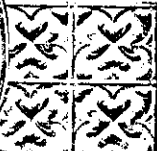
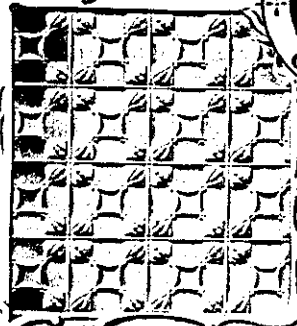
AGENTS FOR



AT AUCKLAND, DUNEDIN, WELLINGTON, CHRISTCHURCH.

MARSEILLES ROOFING TILES.

Cool in Summer, Warm in Winter, Everlasting and cheaper than Slates.



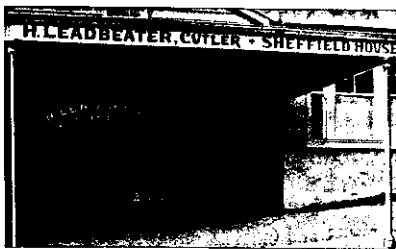
We guarantee our work.

A fully artistic durable & pleasing result is obtained by using **WUNDERLICH ART METAL CEILINGS.** Send for our booklet "N.Z. Beautiful Homes." (Post free)

Villa roofed with Marseilles Tiles.

We have enlarged our Show Rooms & are showing a large & Choice Variety of **MANTELS, GRATES, TILED FIREPLACES, KERBS.** INSPECTION INVITED.

ALL THE LATEST UP-TO-DATE BATHROOM FITTINGS SUPPLIED AT LOWEST RATES.



ESTABLISHED 1880.

Henry Leadbeater

PRACTICAL GRINDER and CUTLER (From Sheffield)

Scissors, Razors, Surgical Instruments, and Carpenters' Tools put in thorough order. Knives re-bladed. Keys fitted.

Importer of Best Sheffield Cutlery

Agent for British Cash Register III.

ONLY ONE ADDRESS—

Wakefield Street, Auckland

Uns surpassed for Richness of Flavour & Beauty of Colour. Guaranteed Highest Grade that Science can produce.

Prepared under the most healthful conditions.

OBTAINABLE AT ALL GROCERS.

E. LOUIS

Jeweller Queen Street, Auckland (Opposite Railway Station)

Rubies and Diamonds, or Sapphires and Diamonds, from £4 to £12

Diamond Marquise, £30

Diamond, half hoop, from £5 to £30

Choicest Selection of Silverware and Electro-plate, all new goods, just arrived, at exceptionally Low Prices.

2 Diamonds, 3 Rubies, £4 4s. Others from £2 2s.

3 Diamonds, 4 Sapphires, £5 Garnet Bracelets, from £2 10s.

Latest Designs in Gold Brooches, Gem Rings, Bracelets, Muff Chains, Etc., Etc.

A Large Selection of the now so fashionable Garnet Crescent Brooches and Garnet Bracelets.

New Zealand Greenstone Jewellery a Speciality.

R. J. ENTRICAN



**PROPERTY AGENT
IMPORTER
INDENTOR
VALUER
TRUSTEE
BROKER
BUYER
COLLECTOR
FINANCIAL ADVISER.**

PHONE 2165.

R. J. ENTRICAN.
Approaching the end of another Year and the Sunrise of the Festive Season I beg to thank my clients for their support and patronage in the past.

The outlook for the coming year is bright and hopeful.

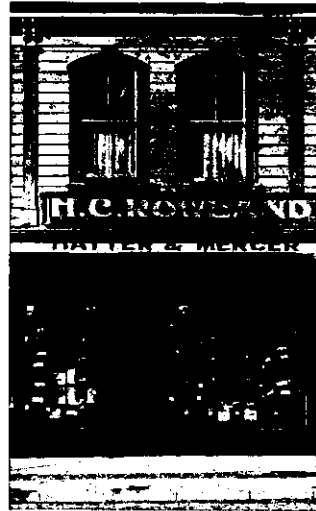
PERSONAL SUPERVISION is given to all the work executed through my office. My knowledge of the Province, both as regarding Business and Land Values, places me in the position to give valuable advice to clients before investing.

- | | | |
|------------------------------------|-------|-----------------------|
| If you want a LIVE AGENT | go to | R. J. ENTRICAN |
| If you want to IMPORT GOODS | go to | R. J. ENTRICAN |
| If you want a VALUER | go to | R. J. ENTRICAN |
| If you want a TRUSTEE | go to | R. J. ENTRICAN |
| If you want to INVEST MONEY | go to | R. J. ENTRICAN |
| If you want YOUR RENTS COLLECTED | go to | R. J. ENTRICAN |
| If you want a CONFIDENTIAL ADVISER | go to | R. J. ENTRICAN |

The Compliments of the Season to all.

HOBSON BUILDINGS, FORT STREET, AUCKLAND.

The Shop for HATS



**HERB. ROWLAND,
The Shop for Hats.**

Never Before

has it been possible to secure in Auckland a

Genuine Panama

at such a low figure. We were especially fortunate in securing this Hat from a large manufacturing house, and are willing to share our gain with our patrons.

If you want Style, Comfort and Service in Headgear, better get in line now.

Price 15/6

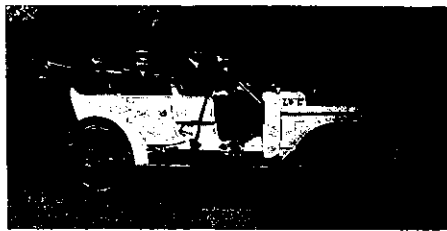
and we have other PANAMA HATS from Twenty-two-and-six up to Forty-five Shillings.

HERB. ROWLAND

GEN'T'S MERCER AND HATTER,
KARANGAHAPE ROAD,
NEWTON, AUCKLAND
(3 doors above Edinburgh St.)

Daimler

AS USED BY THE ROYAL FAMILIES OF EUROPE.



The New DAIMLER Engine.

CHASSIS, OR COMPLETE CARRIAGES,
AT ENGLISH PRICES, plus Importing Charges.

Prices, from £425 for Complete Car.

Chief (N.Z.) Representative—

GEO. HENNING, CUSTOMS STREET, AUCKLAND

Telegrams—"Henning, Auckland."

CARDER BROS. & CO.'S

Our Pipes stand a BIGGER STRAIN than any other Pipes on the Market.

All Kinds of JUNCTIONS, BENDS, SYPHONS, CESSPITS, SINKS and GRATES, BRICKS, STABLE BLOCKS, Etc. Chimney Pots, Ornamental Stumps, and Vases of Various Patterns.

SEND FOR SPECIAL QUOTATIONS and CATALOGUES

Our Make is pronounced to be the Best in the Dominion, and all our Manufactures are now taken as the Standard for New Zealand.



Exhibit at Auckland Industrial Exhibition, August, 1908.

Works - Ponsonby, Auckland
Branch Works—Hobsonville.
TELEPHONE—Office and Works, Ponsonby, 865.

All Kinds of Builders' Terra-Cotta Ware.

Architects' own Designs made up. Bakers' Oven Tiles & Fittings, Firebrick & Fireclay Goods of all Descriptions



Messrs Carder Bros. & Co., Ponsonby, Auckland.

Stratford, Taranaki, N.Z. September 26th.

Sirs.—We have much pleasure in certifying that the pipes supplied by you for the Stratford Sewerage Works were of first-class and of uniform quality, and complied with all the requirements of a very stiff specification. We may also add that your pipes were chosen for this work as they gave the most satisfactory results of all tests made on the sample pipes, which were submitted with the tenders, and that the whole of the pipes (some fifteen thousand) supplied by you were well up to sample. The following is a note of some of the tests:—
Pipe gained only 4 per cent. in weight, after 24 hours in water, specification allowed 5 per cent.
Pipe withstood 35 lbs. per square inch, hydrostatic pressure, before showing signs of swelling, specification required only 15 lbs. per square inch.
Pipe withstood 840 lbs. per square inch crushing weight without showing any weakness, specification required 100 lbs. only.
Yours faithfully,
CLIMK & FAIRBANKS, Borough Engineers.

SANITARY DRAIN PIPES and GOODS ARE THE STRONGEST and BEST

Sporting Goods

Tennis, Cricket, Croquet, Golf, Hockey, Football, Etc.

INDOOR SPORTS and GAMES
BOXING GLOVES, PUNCHING BALLS,
TABLE CROQUET, BILLIARDS,
DRAUGHTS, DOMINOES Etc.

SPECIAL ATTENTION given
to all Sporting, Leather
and Sundry REPAIRS.



XMAS PRESENTS

FITTED BAGS and CASES, JEWEL CASES, WALLETS, CARD and LETTER CASES, PURSES, LADIES' HANDBAGS, SCISSOR CASES, BRUSH CASES, MUSIC CASES, WRITING FOLIOS, GLOVE and HANDKERCHIEF CASE, COLLAR BOXES, TIE CASES, BELTS and BODY BELTS, Etc.

LADIES' AND GENT.'S HAIR BRUSHES

HAT, CLOTH, BONNET, BOOT,
HORSE, DOG BRUSHES, Etc.

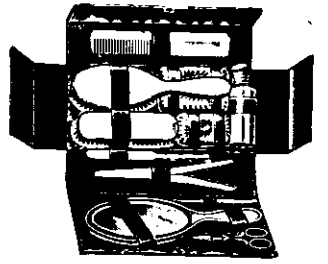
We Specialise in these
lines.



SADDLES, HARNESS, BAGS, TRUNKS, AND ALL TRAVELLING REQUISITES.

J. WISEMAN & SONS, LTD.

Manufacturers and Importers of all Leatherware,
175, QUEEN STREET, AUCKLAND
NEXT H.M. ARCADE.



Our Registered Trade Marks.



PEGASUS

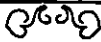


RANGER



Ask your Saddler or Dealer for these
Brands and you will get Stirling Value.

OH! IT'S GOOD!



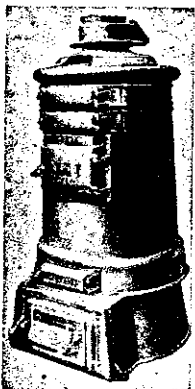
TRADE MARK
Registered

Parkinson's Royal Doncaster Butter Scotch

A LUXURIOUS CONFECTION
PURE AND WHOLESOME.

Sure to please the most fastidious
and refined taste.

To Hot-House Heaters & Poultry Farmers



It will pay you to consult us, before placing your order for Boilers for artificial heating. We can supply a splendid article for heating brooders and green houses, also independent hot water heating for private houses and hotels.

OUR Boilers are the Best on the Market, and requires very little attention.

The consumption of fuel being very small, one charge lasting about 12 hours, when the dampers are properly regulated.

We can supply boilers from 20 upwards.

Write for further particulars.

Inglis & Oram
25, Rutland St.,
AUCKLAND.



Enjoy This Xmas.

Christmas Holidays are trying days to the woman who values her Complexion—and no wonder. Hot days, blistering winds, and flying dust all combine to rob her of that Beauty of Skin which should be hers by divine right,

Your Complexion troubles will melt like snow in the Summer's Sun if you use



John Strange Winter

(Mrs. Arthur Stannard)
Author of "Bootles' Baby"
and "Comely Woman."

John Strange Winter's Toilet Preparations.

John Strange Winter's LAKSHMI softens, cleanses, stimulates and feeds the Skin. It entirely removes the ill-effects of exposure, travel and fatigue, whilst its regular use improves and beautifies the Skin in every way.

Procure a bottle for use during Christmas. Price, 3/6, post free, 3/9.

John Strange Winter's CREME MARQUISE is invaluable in the Nursery and Dressing-room as a dressing for abrasions, sores, and all chafing of the skin. It is an exquisite Ointment, contains no animal fat whatever, and is made from the most soothing and healing ingredients. Price, 2/6 per tube, post free, 2/8.

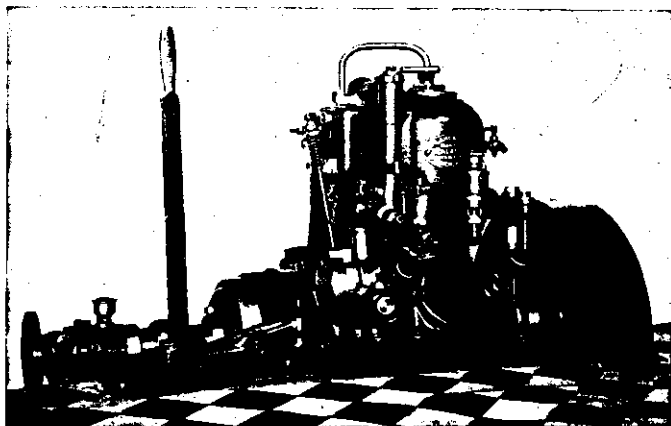
John Strange Winter's POUDE MARQUISE is a delicate Face Powder which gives the dainty MAT appearance to the skin so much desired by French women. Price, 2/6, post free, 2/9.

John Strange Winter's LAKSHMI CREAM is a perfect Cream for daily use. Price, 3/6, post free, 3/9.

John Strange Winter's HAIR FOOD is a marvellous hair grower. It needs only a fair trial to prove its unique value. Price, 3/6, post free, 3/9.

Procureable at all Chemists and Suppliers of Toilet Requisites.

If you cannot procure these Preparations from your Chemist write to "JOHN STRANGE WINTER," 22, Nathan's Buildings, WELLINGTON



HOILAND & GILLETT

LIMITED,

ENGINEERS,

STANLEY STREET, AUCKLAND.

Manufacturers of the

ZEALANDIA Marine Oil Engines

(Two years' guarantee given with these Engines).

AGENTS FOR:

GARDNER Marine and Stationary,
WHEATLEY Stationary, and
BROOKE Marine Engines.

(All British Make.)

We have always a full stock of Reversing Gears, Propellers, Batteries, and Oil Engine Accessories of all Descriptions.

REPAIR WORK A SPECIALITY. CATALOGUES ON APPLICATION.

Isn't he a dear?

Your child will be as happy
 Your child will smile as sweetly
 Your child will look as hearty
 if he's reared on Mellin's Food.

Q Mellin's is the best possible substitute for the best possible food—mother's milk. It is starch free, prepared in a moment without cooking—and its superiority is amply proved by hundreds of thousands of sturdy children all over the world.



Mellin's Food

GOLLIN & CO. PROPRIETARY, Limited,
 WELLINGTON, NEW ZEALAND.

Write to-day for Sample and 96-page Book on "The Care of Infants" —both sent free by return.

Mr. Arthur H. Cranwell
SURGEON DENTIST.
 English and American Experience.
 258, QUEEN ST., AUCKLAND.
 Next Auckland Savings Bank. TELEPHONE 446.

S. STRICKETT,
 Architect and Structural Engineer.
 74, CITY CHAMBERS, AUCKLAND.
 Plans, Specifications, Estimates.

THOS. E. WHITTON, F.N.Z.A.A.
 PUBLIC ACCOUNTANT, AUDITOR AND TRADE ASSIGNEE,
 AGENT AND ATTORNEY FOR ABSENTEES.
 Manager for Auckland Province
 Sydney H. Higgs' Patent Agency.
 NATIONAL CHAMBERS, SWANSON STREET, AUCKLAND.
 TELEPHONE 2862.

A. E. SHRIMSKI CLOTHIER & MERCER
 CORNER OF QUEEN and WELLESLEY STREETS, AUCKLAND



Home of the Working Man's Friend.

"THE WORKING MAN'S FRIEND"

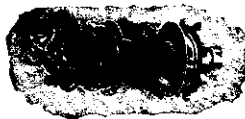
SHRIMSKI'S PRICES are better than argument.
 SHRIMSKI'S VALUES do their own talking.
 SHRIMSKI'S STATEMENTS are freely backed up by genuine low priced goods.
 SHRIMSKI has broken the back of High Prices.
 SHRIMSKI cannot be under-sold by ANYONE who sells Men's Clothing, Hats, Ties, Collars, Shirts, etc.
 SHRIMSKI'S UNDERWEAR will not wear any Underwear sold elsewhere, at prices that cannot be equalled anywhere.

REMEMBER
SHRIMSKI,
 Clothier and Mercer
"The Working Man's Friend,"
 CORNER QUEEN and WELLESLEY STS., AUCKLAND
 For Low Prices and High Quality

Special Concessions during the CHRISTMAS HOLIDAYS

Bicycles. Bicycles. Bicycles.

SEND FOR NEW PRICE LIST.



AGENT FOR
 New Departure Coaster, B.S.A.
 Fittings, Renolds Chains, Dunlop Tyres, Brookes Saddles, etc.

H. GRINLINTON

IMPORTER AND MANUFACTURER

243, Karangahape Road
 AUCKLAND.

TELEPHONE 1679.

A. J. PARKER & CO.

General Engineers

IRON MOULDERS,
 BRASS FOUNDERS & FINISHERS
 COPPERSMITHS and
 SHIP PLUMBERS.

Importers and Manufacturers of Engineers' Requisites.

SHIPPING WORK OUR SPECIALTY,
 and Executed on the Shortest Notice.

Quay Street, Auckland
 (Next N.Z. Shipping Co.)



GEO. RHODES & SONS

ESTABLISHED 1863.

TELEPHONE 1051.

MANUFACTURERS OF

"A1 POULTRY GRIT" In Grades No. 1, 2, and 3 (No. 1 Coarsest)
 also of **"ROUGH-ON-SLUGS"** (1/6 the Square Tin) and the
"R. on S. DISTRIBUTOR."



BEST FIRE-CLAY and FIRE-GRIT.
 BEST CEMENT FLAG-STONES, Etc.

ORDERS FOR BRICKWORK, CONCRETE, WOODWORK, SLATING, PLASTERING, PAVEMENTS (plain or fancy) or SANITARY DRAINAGE carefully executed

PRIVATE ORDERS - From a NEW HEARTH to a NEW HOUSE, duly executed in our well-known style.
 Agents for the famous Drury Fire-Clay, Fire-Bricks, Chimney Pots, etc.

General Builders & Manufacturers
 23, Customs Street West, Auckland.



The Best in Art Literature

TUCK'S

USED BY ROYALTY

Something in the New!
 A splendid series of cards with real Ball-Ball ropes attached, is one of the leading specialties of the season among upwards of 4,000 ordinary, new Xmas Christmas - New Year cards.

Picture Uzzle Postcards
 SPECIALTY OF THE SEASON
 FOR PROMPT DELIVERY BY TRAIN, PARCELS SERVICE, AIR MAIL, ETC.

LIST OF SPECIAL XMAS POSTCARDS: Xmas Postcard Exchange, 1200 National Calendar in every part of the World, all leading dealers or send for an application to **RAPHAEL TUCK & SONS LTD.** Publishers to HM the King & Queen, RAIPHAEL HOUSE, MOORFIELDS, CITY LONDON

XMAS CARDS
POST CARDS
BIRTHDAY CARDS
WALL TEXTS
ENGRAVINGS
PHOTOGRAVURES
OILETTES
CALENDARS
TOY BOOKS
ART NOVELTIES
ZAGZAW
 THE NEW SYSTEM OF ARTISTS etc. etc.

Cable and Telegraphic Address: "VOLTS," Auckland.

Telephone 1928.

Chambers, Innes & Thornes

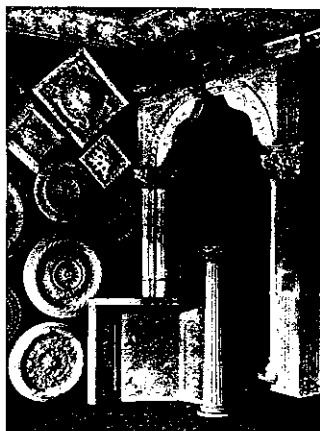
LIMITED.

ELECTRICAL ENGINEERS and CONTRACTORS

Contractors for Complete Electric Light and Power Installations.
 All Descriptions of Electrical Work Undertaken.

13, Gore Street, Auckland

Fibrous Plaster Ceilings



Will Not Crack and Cannot Fall Down.

ARE MODERATE IN PRICE.

Made and Erected by:-

W. BATTS

Upper Vincent St., AUCKLAND.
 TELEPHONE 1637.

ARCHES, CENTRE-FLOWERS, ETC. ALWAYS IN STOCK.

NEW DESIGNS CONTINUALLY BEING ADDED TO.



Price, 17/8.

YOU REALLY MUST

Call and see our stock of Trimmed Millinery this season. You will be delighted with the styles, and more so with the prices. There is no need for you to pay two and three guineas for a hat now.



Price, 19/6.

We can give you a smart hat for morning or afternoon wear from 9/11 to 15/6. A dressy hat in all the newest shades, trimmed with Dainty Flowers and Foliage, from 18/6 to 25/8. Beautiful Black Hats, long Ostrich feathers, 23/8 to 32/6.



Price, 24/-

We also remodel ladies' last season's Millinery.

Country orders promptly attended to, but must be prepaid and postage added.

*Phone 957.

SHAKESPEAR & Co.,

HIS MAJESTY'S ARCADE, QUEEN STREET, and

SCHOOL OF ART NEEDLEWORK, KARANGAHAPE ROAD, NEWTON, AUCKLAND.

Christmas Presents.

TO ARRIVE - A large assortment of new and beautiful designs in Art Needlework, Crown Derby, Elsmere, Coburn Imperial, Ciralde, Mentone, Bryanzas. The most artistic designs, suitable for Prize Exhibitions, Shows, Etc.

All the Newest Designs and Materials for Art Needlework and Lacework.

Pearsall's Washing Silks, Mercine's Knitting and Crochet Silks in all colours. Art Linens, Art Canvasos, and a Large Assortment of Traced Goods.

Country Orders Promptly attended to.

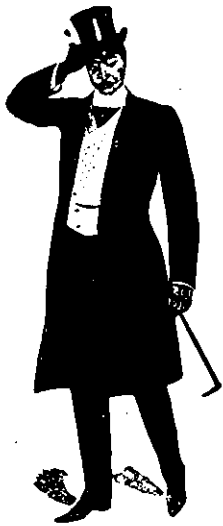
Special Terms for Guilds and Bazaars.

A LA MODE
 PITT STREET BUILDINGS and No. 9, KARANGAHAPE ROAD, AUCKLAND.
 MISS ARBUCKLE, Late of Milne & Cheyne.

Faultless Fit.

Stylish Cut.

Thorough Satisfaction.



Percy W. Bolland

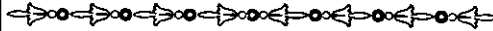


NEWEST PATTERNS in ENGLISH, IRISH and SCOTCH TWEEDS ARRIVING BY DIRECT STEAMERS.

**Union Bank Buildings
Auckland**

Corner Victoria and Queen Streets.

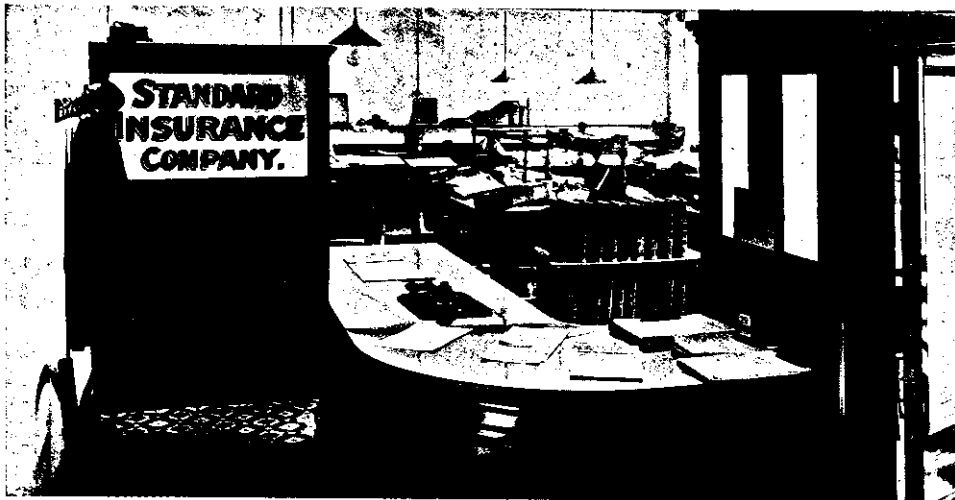
**MERCHANT TAILOR
and IMPORTER.**



TELEPHONE 1292.

STANDARD

**Insurance
Company
of New Zealand
(Limited).**



A CORNER OF THE NEW OFFICE, SWANSON STREET.

**Fire, Marine,
Guarantee and
Accident Risks**

Accepted at the
LOWEST CURRENT RATES.

Marine Losses made payable at any of the Company's Branches.

G. JOHNSTON, Manager,
BANK OF NEW ZEALAND BUILDINGS,
SWANSON STREET, AUCKLAND.

L. SARNEY'S

200 to 204, KARANGAHAPE ROAD **TWO SHOPS** And CORNER UPPER QUEEN ST. AUCKLAND.



*We have one of the
Largest Stocks in Auckland*

of LADIES' COSTUMES, BLOUSES, SKIRTS and UNDERCLOTHING. Also, we make a SPECIALITY FOR GIRLS OF ALL AGES, and our Stock this Season is the LARGEST and BEST we have yet had.

*Millinery and Dressmaking
Under first-class management*

so Ladies can obtain, at a moment's notice, all they require in Dresses for all occasions.

FURNISHING



WE
Manufacture
every
Description
of
Furniture.

Writes for our
Catalogue.

All
Guaranteed
to Designs.

Best
Workmanship.

**GABRIEL LEWIS
& CO.,**

54 QUEEN STREET, AUCKLAND.

GEO FOWLDS

"The Sign of Satisfaction."



**WILL YOU TRY US FOR
YOUR NEXT ITEM? - -**

"Supreme in Excellence,
Most Reasonable in Price."

GENTLEMEN,

Your appearance is your care and our business.
We desire you to consider us at your service in everything
pertaining to Men's wear.

The keynote of our business is "GOOD VALUE,"
because here:—

- 1st—THE QUALITY IS RIGHT
- 2nd—THE STYLE IS RIGHT
- 3rd—THE PRICE IS RIGHT

GEO. FOWLDS, Victoria Arcade, AUCKLAND.

"The House for Dressy Clothes."

FOUNDED IN 1873.

S. JOHN'S COLLEGIATE SCHOOL

HEADMASTER

THE REV. P. S. SMALLFIELD

Assisted by an Efficient Staff of Resident and
Visiting Masters.

Elevated Position, Country Surround-
ings, Spacious Playing Fields, Large
Airy Dormitories, Gymnasium, Swim-
ming Bath and Workshop.



COPIES OF ILLUSTRATED PROSPECTUS ON
APPLICATION.

BOARDING AND DAY SCHOOL FOR BOYS



G. W. S. Patterson & Co.

Gore St., Auckland
Hankow, China

**Kauri Gum
Merchants**

31 Pine St., New York
and London

PROMPT ACCOUNT SALES
RENDERED.

COMMISSIONS EXECUTED FOR
COUNTRY SETTLERS.

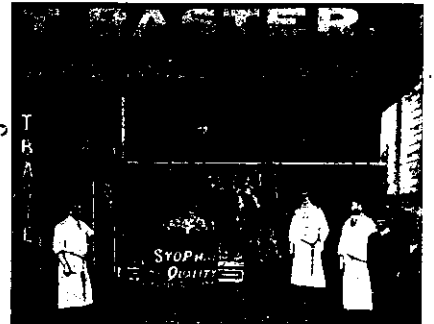
HIGHEST MARKET PRICES GIVEN FOR ALL CONSIGNMENTS OF KAURI GUM.

G. W. S. Patterson & Co.

GORE STREET, AUCKLAND.

Strength-making Meats.

The greatest food value is
obtained from good meats.
For tissue building, nourish-
ing food, you must have meat
as a part of your menu.



BASTER

watches what he buys, and
sees that he has

Real Quality,

and that you get the full
worth of your money.

Phone 1114.

MY MOTTO:—"Cleanliness, Civility and Attention."

Thomas Baster, THE PEOPLE'S BUTCHER,
Ponsonby Road, Auckland.

TELEPHONES 644, 155, 2579.

J. J. CRAIG, Ltd.

TELEPHONES 644, 155, 2579.

Railway Cartage Contractors.

Coal Contractors.

**Brick, Lime, Cement
AND
Pipe Manufacturers.**

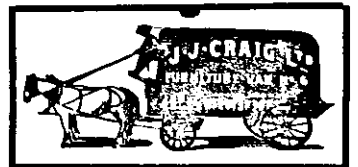
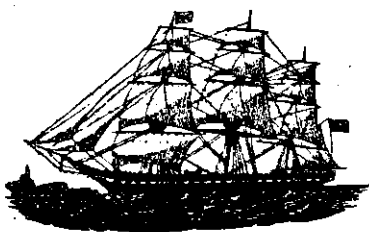
SHIP OWNERS, SHIPPING AND COMMISSION AGENTS.

FURNITURE CAREFULLY REMOVED.

SOLE AGENTS FOR
STANDARD, MARINE and STATIONARY ENGINES.

Queen Street, Auckland

(Opposite Bank of New Zealand).



MANUFACTURERS OF Ordinary Pressed Bricks, Red and Buff Pressed Bricks.
LIMES—Hydraulic, Shell, Roche, and Portland Cement.
Pipes, Tiles, Firebricks, Fireclay. SANDS—Building and Asphalted.
ON SALE: Tar, Shells, Scoria. COKE—Grey-mouth, Newcastle and Local.
FIREWOOD—Cut & Uncut COALS—Grey-mouth, Newcastle & Local.

Telephone—Head Office—843. Telephone—Order Office—96.

D. GOLDIE,

OCEANIC SAWMILLS,
**Albert and Little Queen Streets and
 Breakwater Road.**


Mills, Factory, and Main Yards: **BREAKWATER ROAD.** Oregon, Blue Gum, and Ironbark Yards: **ALBERT STREET.**

Always in Stock:
**LARGE SUPPLIES OF SEASONED KAURI, RIMU, TOTARA, WHITE
 PINE, OREGON, BLUE GUM, AND IRONBARK TIMBERS, also
 JOINERY, MOULDINGS, etc.**

PROMPT EXECUTION OF ORDERS A SPECIALTY. Catalogues and Price Lists free on application.

D. GOLDIE.

OREGON A SPECIALTY.



Old Advice but Good.

After many years of trial I must still advise you to call at

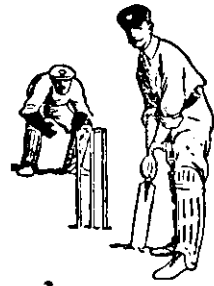
GOODSON'S

for all you require to celebrate my Yearly Festival, that's all, but it's the best I can give you.

ONLY ONE ADDRESS:

GOODSON'S Santa Claus Warehouse

230, 232 & 234 Queen Street, AUCKLAND.



PARTRIDGE'S Sports Depot AUCKLAND.

CRICKET SEASON 1909-10.
 Our English Selector, A. E. Rely, has secured for us the pick of the makers stocks of the following Bats—
 GRADIDGE'S IMPERIAL DRIVER
 DUKE'S ROYAL
 STUART SURRIDGE'S RAPID DRIVER
 WISEN'S CRAWFORD EXCELLER
 WILLIAM GUNN'S AUTOGRAPH
 SHAW & SHREWSBURY'S EXTRA SPECIAL
 GARDINER'S BEST (All the above bear Mr. Rely's Autograph) } **30/- Each NET**
 KANGAROO CLUB BATS } **25/- Each**
 The finest Double Rubber Spliced Bats ever offered at the price.
 BOYS—ALL CANE HANDLE BATS } **5/- and 6/- Each**
 Every Bat with a bound blade. Marvels for the money.

RESTRICTING TENNIS RACQUETS AND REPAIRS BY EXPERT WORK—MEN. PROMPTITUDE WITH REASONABLE CHARGES.

EVERYTHING FOR TENNIS

Before placing your orders for Tennis Racquets don't fail to see our new H.E.P. HARP-STRUNG Tournament Model. An entirely new Racquet made on the very latest principals, very lightly strong and especially produced for Expert Tournament Play. - 42/6 Each
 ONLY A LIMITED QUANTITY CAN BE SUPPLIED.
 Our other well-known Racquets have all been produced in latest models and will be found, as usual, the best obtainable at their respective prices. The H.E.P. SPECIAL, one of the finest Racquets ever produced. (Fully Illustrated) - 38/6 Each

WRITE FOR ILLUSTRATED CATALOGUE OF TENNIS RACQUETS AND SUNDRIES. CROQUET, BOWLS, FISHING TACKLE, SPORTING BOOTS AND SHOES, ETC., FREE ON APPLICATION.

Go to **R. TUDEHOPE,**
Sanitary Plumber, Gasfitter and Importer
 For the **BEST WORK** in all branches of the Trade.
 "By careful supervision, we study customers' interest."
30-32, WELLESLEY STREET WEST AUCKLAND.

MASEFIELD & Co. ENGINEERS.

FOR SALE—2 Three-cutter PLANING, THICKENING, AND MOULDING MACHINES, 12 x 6, and Spare Tools.
 40 ENGINES and BOILERS (self contained) of all sizes. Sawmilling and Flaxmilling Machinery a Specialty. TERMS ARRANGE!!

PHONES 341 and 434.
Iron and Brass Founders.
ALBERT IRON FOUNDRY, AUCKLAND.

Commercial Training College

RANFURLY BUILDINGS, 81 QUEEN STREET, AUCKLAND. PHONE 2742.

SHORTHAND, Typewriting & Commercial Correspondence.
 Book-Keeping Classes a Specialty. NO BOOKS. THOROUGH COMMERCIAL KNOWLEDGE IN 3 MONTHS.

Principal, Miss C. S. V. BASTEN, A.N.Z.A.A., Expert Typiste and Shorthand Writer.



SANFORD, LTD.

AUCKLAND. Branches at Thames and Tauranga.
 Wholesale and Retail
FISH & OYSTER MERCHANTS
 SANFORD'S FISH MARKET, Opposite CUSTOM HOUSE, AUCKLAND, N.Z.
 Fresh Fish Packed in Ice, or Frozen, forwarded to all parts of the World. FRESH FISH DAILY.

TRADE MARK. A. SANFORD, Managing Director. Telephones—Retail Market, 658; Curing Factory, 790; Private Residence, 288, P.O. Box 148.

HERBERT BROS.

DESIGNERS AND CRAFTSMEN IN LEADED GLASS.
 Silver and Bronze Medallists International Exhibition Christchurch 1902.

BANK ST., Top of Shortland St. AUCKLAND.

PHONE 1893.

We now carry one of the largest stocks of material for the manufacture of **Stained Glass and Leaded Lights** in the Dominion.

INSPECTION INVITED.

Tinted Designs and Prices supplied for **Stained Glass Memorial Windows** on application.

You will do well to consult us on all matters pertaining to **Leaded and Stained Glass**. We are **SPECIALISTS** in this line, and are competent to give best advice, and render best services.



D. & A. BROWN

PHONE 1864.
Shortland Street, AUCKLAND.

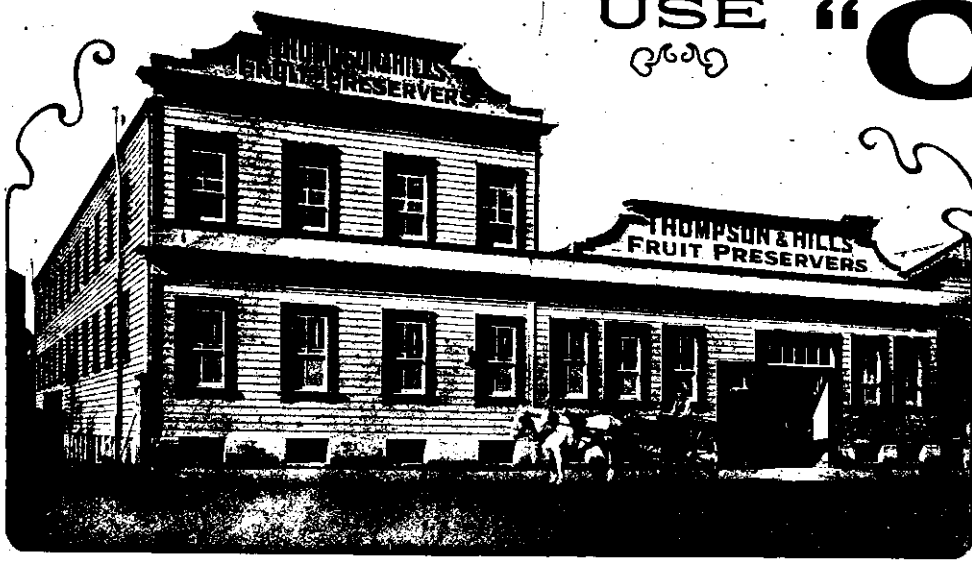
WORKS: **GRAFTON TERRACE.**

Superior Dyers & Cleaners
 Dry Cleaning a Specialty
 Established 1866



Superior Dyers & Cleaners
 Dry Cleaning a Specialty
 Established 1866

DYERS & CLEANERS



USE "OAK"
JAMS

ALWAYS
THE
BEST.

£16 for a Standard Visible Typewriter looks too Good to be True, Doesn't it?

The Empire Visible Typewriter is in every respect the equal of any Typewriter, and in reliability and many other points the superior of any machine on the market.

H.M. Government have bought over

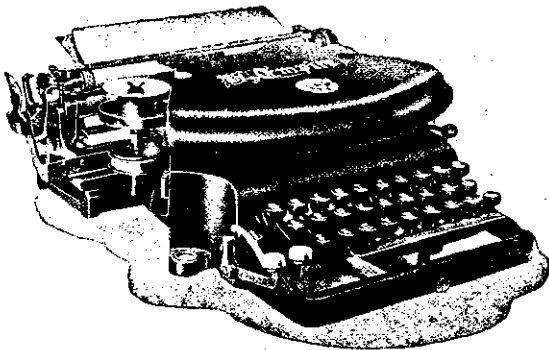
2,000 Empires since 1903.

The Canadian-Pacific Railway use

1,000 Empires.

Every Railway Company in England have

EMPIRES.



We are prepared to refund your money if at the end of 12 months the Empire does not act up to your entire satisfaction. An enquiry costs nothing, and will save you £ to in your typewriter bill.

F. B. KNYVETT, Ranfurly Buildings, Queen Street, Auckland
SOLE NEW ZEALAND AGENT *You may Pay More, but you cannot Buy More.*

TELEPHONE 331.

P.O. BOX 248.

CARPENTER ARTHUR
AUCTIONEER

Regular Sales of Produce and Fruit held Every Week.

FURNITURE SALES CONDUCTED.

PROMPT ACCOUNT SALES.

A TRIAL SOLICITED.

City Market, Auckland.

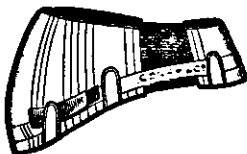
BON TON CORSET HOUSE



G. WRIGHT

(Late E. ABERCROMBIE)

SURGICAL and PATENT FIGURE-REDUCING BELT MANUFACTURER



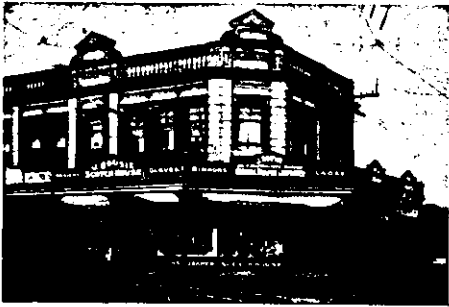
SPECIALITIES:

ABDOMINAL BELTS, APPENDICITIS

BELTS.

185, Upper Symonds St.,
AUCKLAND.



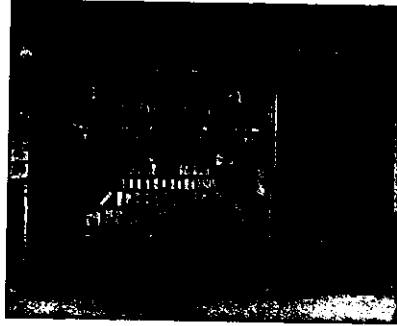
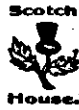


J. Bousie,

(LATE R. STEPHEN & SONS, GLASGOW.)

GENERAL DRAPER, HOSIER and OUTFITTER.

CORNER MT. EDEN ROAD & UPPER SYMONDS STREET, AUCKLAND.



L. S. RICKERBY,
Chemist.

PURE DRUGS, TOILET REQUISITES and SURGICAL APPLIANCES.

DOMINION ROAD, AUCKLAND.



TUGBY & MAYES

IMPORTERS OF BOOTS and LEATHER.

236, Karangahape Road, Auckland

The Cheapest Shop in Auckland for Imported and Local Footwear.

Send your Repairs.

Rubber Heels.

THE WHITE HOUSE

MACFARLANE & CO.

Queen Street, Auckland



Everyone earns money, but few have mastered the art of saving.

THE WHITE HOUSE SAVES MONEY FOR EVERY ONE WHO TRADES WITH IT.

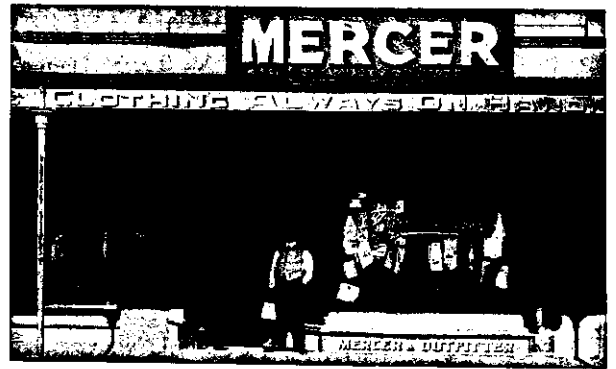
We feel exceptionally proud of our low prices and are confident that no other house in Auckland can match us for price and quality.

Please Examine Our Goods.

MACFARLANE & Co.

DRAPERS.

QUEEN STREET, AUCKLAND



LOOK WELL AND COMMAND SUCCESS.

Gentlemen who dress for Style, Neatness and Comfort will find it to their advantage to visit—

F. Mackay & Co., COMPLETE GENT'S OUTFITTERS.
Ponsonby Rd., AUCKLAND.

A new and well assorted stock of Up-to-date Men's Wear and Clothing to select from. Latest Novelties in Neckwear. Solid Leather Portmanteaux, Brief and Gladstone Bags a speciality. All Goods marked in plain figures. Why go farther and fare worse! Country patrons specially catered for.

NOTE ADDRESS— PONSONBY ROAD, —Opp. Western Park.

R. FRENCH'S

OLD ESTABLISHED GROCERY BUSINESS, NOW CONDUCTED IN THE

UP-TO-DATE NEW SHOP,

Corner of

Karangahape Road & Howe Street, Auckland.



We Supply the Best Qualities in Teas, Groceries, and Provisions, at Low Prices. Country Orders Carefully Packed. YOUR ORDER WILL BE APPRECIATED.

SINTON & FISHER
Yacht, Launch and Boat Brokers and Designers.
Endean's Buildings, Auckland.
Phone 2781.

ECONOMIZE.

ECONOMIZE.

ECONOMIZE.

TANGYE SUCTION GAS ENGINE AND PRODUCER

CHEAPEST AND SIMPLEST POWER IN THE WORLD.

10 BRAKE
HORSE POWER
FOR
ONE PENNY
PER HOUR.



Illustration of Pumping Plant recently supplied by John Chambers and Son Ltd., to the Onehunga Borough Council Waterworks, capable of delivering 30,000 gals. per hour, 350ft high. Pumps are driven by TANGYE SUCTION GAS ENGINES & PRODUCERS

CAN BE
APPLIED TO
EVERY
INDUSTRIAL
USE.

Saving 75%.

The Tonson Garlick Company, Ltd., Auckland, advertise their saving, as compared with replaced Motive Power, as SEVENTY-FIVE PER CENT. (75%), and dozens of others throughout the Dominion are showing like results.

Saving 75%.

Catalogues, References, and Fullset Particulars from the Sole Agents:-

JOHN CHAMBERS & SON LTD.

Auckland, Wellington, Gisborne,
Dunedin, Christchurch.

SEAGAR BROS.

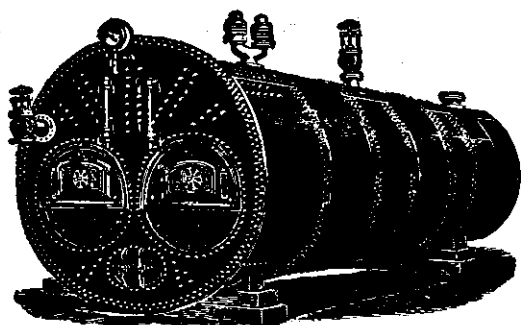
ENGINEERS, BOILERMAKERS and SHIPBUILDERS

IRON and BRASS FOUNDERS.

P.O. BOX 515.

ESTABLISHED 1869.

PHONE 583.



MAKERS OF EVERY DESCRIPTION OF

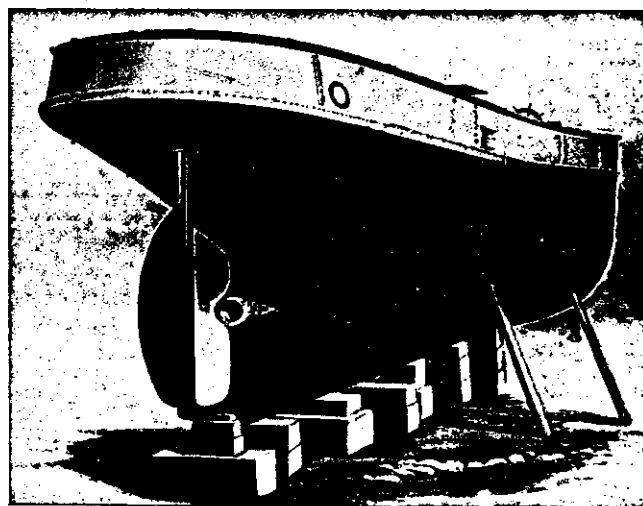
ENGINES and BOILERS

FOR LAND AND MARINE PURPOSES.

HOBSON STREET WHARF

(ADJOINING GRAVING DOCK)

AUCKLAND.



Also—STEAM STEEL LAUNCHES, made with guaranteed speed.

All Classes in IRON, BRASS and BRONZE CAST.

Plans and Estimates given for ANY LINES in the
above Branches of Trade.

R. & W. HELLABY

LIMITED.

Cable Address: HELLABY, AUCKLAND.

AUCKLAND

Telephones: 182 and 111.

Are noted for the Prime Quality of their Meats.
DELIVERIES IN THE CITY AND SUBURBS DAILY.

GIVE US A TRIAL, AND WE WILL SERVE YOU WELL.

HELLABY'S "Crown" Brand of Canned Meats

Have the Largest Sale of any Meats Canned in the Dominion.

Enough said!

No Poultry-keeper should be without HELLABY'S FRESH GREEN BONE.
Nothing so good for the Poultry. Try it, and you will never be without it.

For Building up the Constitution and imparting Tone to the System generally, there is nothing to excel

HELLABY'S "BOVO"



"BOVO"
is universally acknowledged to be the best "EXTRACT OF MEAT" on the market.

TRY A JAR.

To be obtained of all Storekeepers.

I ARREST YOUR ATTENTION. WHY PAY RENT?



To acquire your own home is a sensible ambition. Allotment owners, deposit owners financed to build. Money provided, repayable in instalments. Plans prepared. Tenders invited. Supervision guaranteed. We provide the money, therefore want a good job. You have to pay it back. You want a good job; therefore, in looking after our own interests we are looking after yours. Plans are prepared to any design desired, or if preferred we will use our own taste and judgment. Satisfaction guaranteed.

FARMS ALL SIZES AND PRICES

Easy terms. Send to me for particulars before deciding. You will never regret it.

9180 ACRES, sub-divided into 20 small farms, well watered and fenced. New homestead cost £1500. First-class outbuildings. Price £4 10 per acre. Good district, good soil. Auckland Province. Great chance for speculators.

DON'T BUY ELSEWHERE. SEE ME FIRST. BEST SELECTION IN THE DOMINION.



CHRISTIE NEW SYSTEM FINANCIAL AGENT, GROUND FLOOR COLWILL'S BUILDINGS, SWANSON STREET, AUCKLAND.

THE VITAL SCIENCE HEALERS

FREE HEALING DEMONSTRATIONS.

Are given in every city visited by the **Vital Science Healers** for the purpose of publicly proving their power to relieve, without drugs, the pain of hundreds of poor, tortured sufferers from Neuralgia, Rheumatism, Gout, Sciatica, Lumbago, and many other painful complaints.

They also demonstrate conclusively that a large number of cases of Functional and Chronic Diseases, such as Asthma, Bronchitis, Catarrh, Deafness, Dyspepsia, Eczema, Nervousness, Insomnia, Paralysis, Palsy, Goitres, Tumors, Stammering, St. Vitus' Dance, Short-sightedness, Blindness, etc., etc., can, in many instances, be either **completely cured or greatly improved** by their new, rapid, and natural system of Drugless Healing, which has been tested and recommended by some of the leading Scientists of Europe and America, who are convinced that **many of the above-stated disorders are NOT curable by Drugs.**

The **Vital Science Healers** do not give their Demonstrations in connection with any particular religious or sectarian body; neither do they claim occult or miraculous power; nor do they guarantee to cure every case; and the marvellous results which they obtain in most instances must be considered still more wonderful by the facts that **The Healers** do not practise medicine or surgery, never prescribe or give drugs, and do not even take the title of doctors.

Thousands of people in London, Paris, and elsewhere have witnessed their commendable and highly successful work, and have seen day after day on the platform hundreds of helpless and hopeless sufferers restored to health and happiness.

A Class is being formed for **Stammerers**

Which in the past has helped those afflicted with this painful and distressing Nervous Complaint. Many here testify that, while in Auckland, we have cured.

Private Address—**"AUSTRALBION," SENTINEL ROAD, PONSONBY, AUCKLAND,**

and at **51, CITY CHAMBERS** (TAKE LIFT TO THIRD FLOOR)



Boots and Shoes of Character !!

Don't you prefer them to the common-place kind?

Isn't it to your interest to buy your Boots and Shoes at PRITCHARD'S, the shop that makes a speciality of Distinctive Style, and where quality is considered first.

Pritchard's Boots will outwear your expectations.

Pritchard's Low Prices will prove this.

PRITCHARD

ENDEAN'S BUILDINGS, QUEEN ST., AUCKLAND. 'Phone 1945.



Visit **NEW ZEALAND'S WONDERLAND**
and stay at the

Grand Hotel

ROTORUA

THE LEADING HOTEL IN HOT
LAKES DISTRICT.



Close to
The Railway Station
The Government
Gardens and
Famous Curative
Baths.



ROOMS
Reserved by letter
or telegram ad-
dressed to
"MANAGER,"
GRAND HOTEL,
ROTORUA.
TARIFF:
From 12/6 per day.

UNDER THE PATRONAGE OF

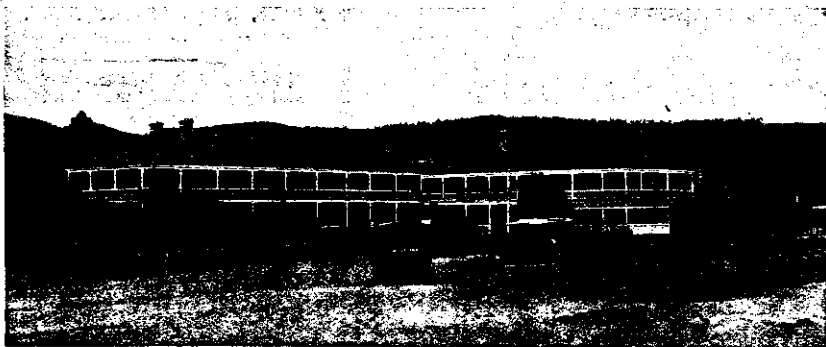
T.R.H. The Prince and Princess of Wales

GOVERNORS OF AUSTRALIA and NEW ZEALAND
THE ADMIRAL OF THE AMERICAN FLEET, Etc.

GEYSER HOTEL

WHAKAREWAREWA

ROTORUA



Situated in a Unique position close to the
Wonderful Geysers and Maori
Settlement.

From the verandah of this Hotel visitors
have constant opportunity of witnessing
the Geysers playing, and of studying
Native life and customs.

The Hotel possesses its own
private Hot and
Cold Curative Mineral Baths, of which
the most valued are the "Spout," "Oil,"
and "Carlsbad" Baths. It is furnished
throughout in a most luxurious style,
and is on a par with the leading Conti-
nental Spa Hotels.

N.B.—Tourists staying at the GEYSER HOTEL are on the spot. Constant coaches run
regularly between Whakarewarewa and the Rotorua Sanatorium, and vice versa.

Tariff: From 10/6 per day.

LAKE HOUSE HOTEL

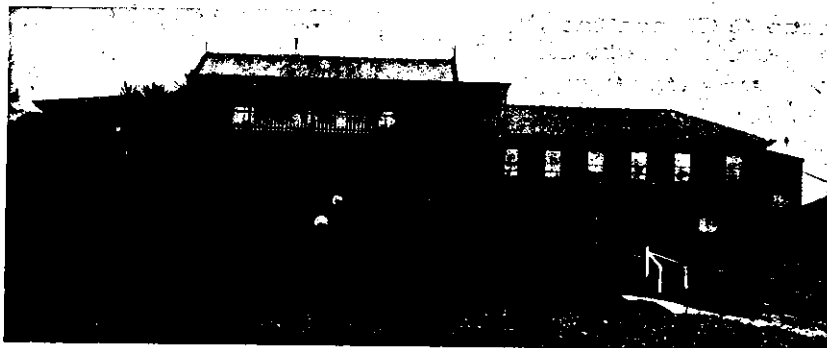
Ohinemutu, ROTORUA

Tariff: From 8/6 per day.

On the Shores of the **MAGNIFICENT
LAKE ROTORUA**; one of the most commanding
positions in the district. From its spacious
balconies a wonderful view is obtained. Among
the **GREAT ATTRACTIONS** this popular
Hotel has to offer to visitors is the free use of

**Eight New Hot
Mineral Baths**

of the **LATEST** and **MOST UP-TO-DATE
DESIGN** in **SEPARATE SPECIALLY
CONSTRUCTED BATH HOUSES**, situated
on its own **SPLENDIDLY LAID OUT
GROUNDS**.



ARTHUR H. NATHAN, Ltd.

AUCKLAND.

General Importers and Commission Merchants

WAREHOUSE and OFFICES—LAUNCESTON BUILDINGS, CUSTOMS STREET EAST.
KAURI GUM STORES

BONDED STORES ALBERT STREET.
LONDON OFFICE—DASHWOOD HOUSE, 9, NEW BROAD STREET, E.C.

IN BOND, OR DUTY PAID, EVERY DESCRIPTION OF GOODS CONNECTED WITH THE **GROCERY, PROVISION, WINE & SPIRIT TRADES** CATALOGUES OF GOODS IN STOCK will be Forwarded on Application

CASH ADVANCES made against Consignments of KAURI GUM, WOOL and other COLONIAL and ISLAND PRODUCE for Shipment to London or other Markets.

Importers of Teas, Fruits, Oilmen's Stores, American Hardware and Woodware, Canadian Manufactures, Tobaccos, Cigars and Cigarettes, Eastern Produce, etc., Oils, Chemicals, Patent Medicines, Stationery, etc.

... AGENCIES ...

N.Z. and African Steamship Company, Limited
Swedish-South African Line of Steamers
The American and Australian Steamship Line
Nestle and Anglo-Swiss Condensed Milk Company
Andrew Usher & Co., Edinburgh, Whiskies
W. & A. Gilbey, Ltd., London, Wines and Spirits
Ardath Tobacco Company, Ardath Tobacco and Cigarettes
H. P. Bulmer & Co., Hereford, England, Sparkling Ciders
W. & A. Ross & Bro., Ltd., Liverpool, Ale and Stout
Godfrey Phillips & Sons, Tobacco, Cigars and Cigarettes, London

PROPRIETORS of the CELEBRATED


"RELIABLE" TEAS

PACKED IN AIR-TIGHT LEAD PACKETS.

... AGENCIES ...

Bowley & Co., Ltd., Flor de Dindigul Cigars, London
Dr. S. P. Townsend, New York, Sarsaparilla
MacLaren's Imperial Cheese Company, Toronto, Canada
G. Abate & Figli, Messina, Essential Oils, Peels, etc.
"Alma" Cigarettes Co., Cairo, Egypt
Johnsen's "Crown" Norwegian Sardines
"Cobra" Boot Polish Co.
Gear Meat Preserving Company, Wellington
Pururus Packing Co., Bay of Islands, Canned Mullet

ARTHUR NATHAN'S



THE PERFECTION OF FLAVOUR AND AROMA

Packed in Air Tight Lead Packets

'RELIABLE' TEAS



NESTLÉ'S MILK FOOD

FOR INFANTS

FOR INVALIDS

PERFECT NUTRIMENT FOR INFANTS CHILDREN AND INVALIDS

THE GEAR MEAT PRESERVING & FREEZING CO., of New Zealand, Ltd., Wellington



By Special Appointment to H.H.H. the Duke of Edinburgh, His Excellency the Governor, and the late Governors of New Zealand.

Contractors to the Admiralty.

Manufacturers of CANNED MEATS, SOUPS, POTTED PASTES, EXTRACTS OF MEAT.

Specially Recommended by the Medical Profession.

The Largest Meat Preservers and Exporters in New Zealand

Auckland Agents: ARTHUR H. NATHAN, Ltd.

GEAR CANNED MEATS ARE WARRANTED IN ANY CLIMATE

Specialties:

"RELIABLE" COFFEES.
BAKING POWDER.
CORDIALS. ESSENCES. CURRY.
SPICES. VINEGAR. Etc.

"Alma" Cigarettes.

CHOICEST EGYPTIAN. 100's, 50's and 10's.

"Winfred" Cigarettes.

PURE VIRGINIA LEAF. 10's.

"State Express" Cigarettes.

50's, 25's and 10's.

FRESH CANNED MULLET

In 4lb. and 1lb. tins. Registered Brand: "PENGUIN"
FIRST AWARD at the AUCKLAND EXHIBITION.

Tongues and Roast Pork.

PURURUA PACKING CO., Pururua, Bay of Islands.

Auckland Agents: ARTHUR H. NATHAN, Ltd.

Foremost in Popularity.

Andrew Usher & Co.'s

Special Reserve

O.V.G. Whisky
(OLD VATTED GLENLIVET)

"B.D.V."

Tobacco & Cigarettes

Flor de Dindigul Cigars

BULMER'S SPARKLING HEREFORDSHIRE CIDERS.

Highly Recommended by Medical Profession

NESTLÉ'S RICHEST IN CREAM.

CONDENSED MILK

RICHEST IN CREAM.

NESTLÉ'S

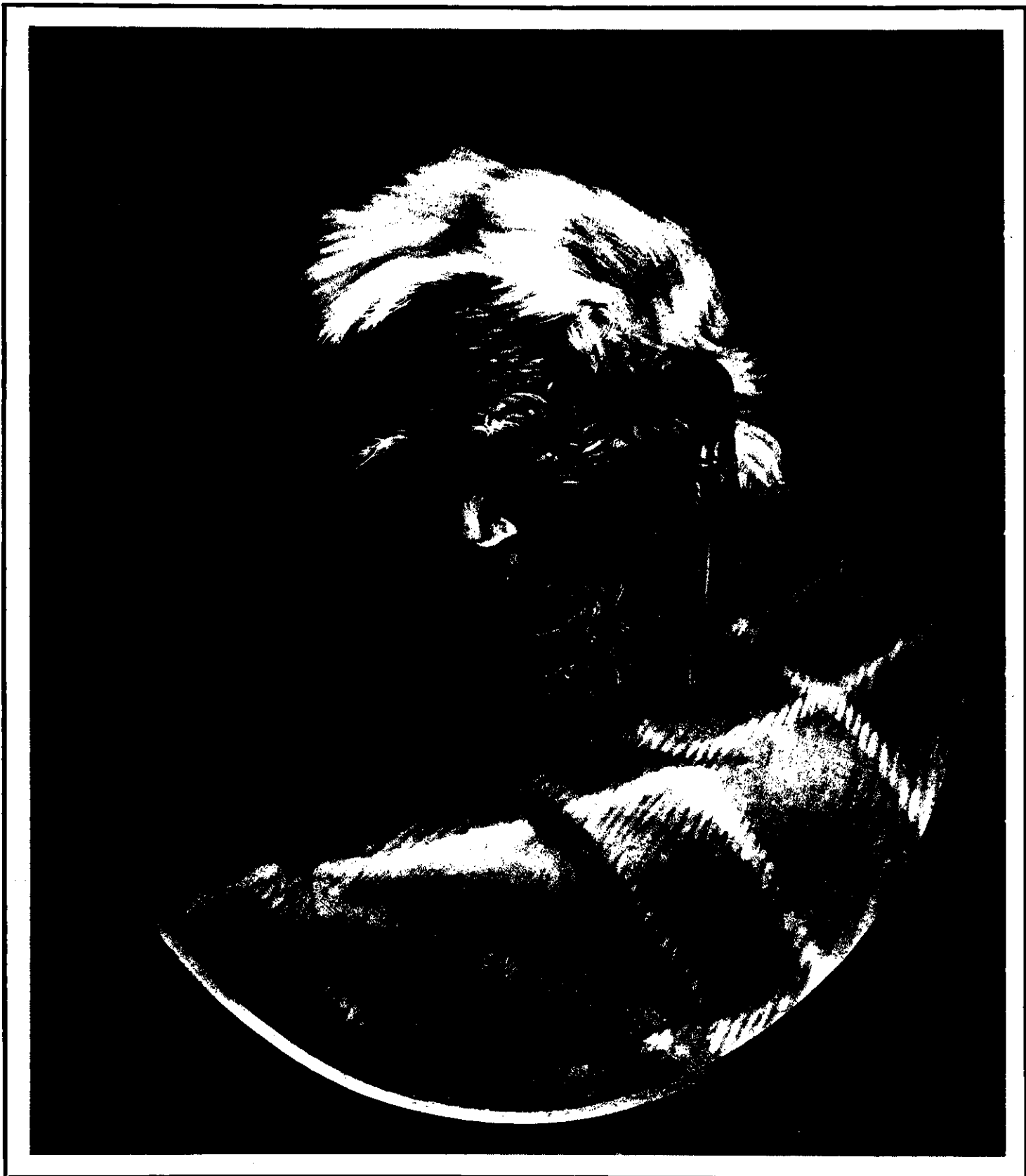
SOLUBLE COCOA.

NESTLÉ'S SWISS MILK

CHOCOLATE.

Wholesome, Palatable and Nutritious.

ARTHUR H. NATHAN, LIMITED.



*Reproduced by kind permission of the Artist
Mr. C. F. GOLDIE, Auckland*

APERAHAMA.
A MAORI CHIEFTAIN AGED 104 YEARS.