

A. & G. PRICE,

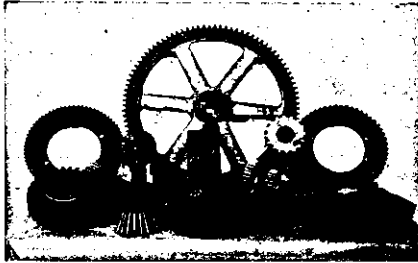
LIMITED.

MAKERS OF MINING, CRUSHING, SAWMILL AND GENERAL MACHINERY.

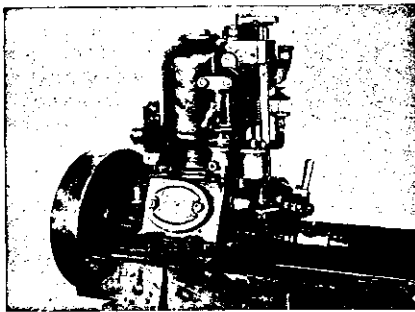
Flax Machinery a Speciality.

Sole Makers and Patentees of the PELTON WHEEL For New Zealand.

Makers of all class of Steam Engines, Land and Marine.



ENGINEERS, BOILERMAKERS, BLACKSMITHS, IRON and BRASS FOUNDERS.



Special Machinery for Motor Car Work and Gear Cutting.

Makers of "PRICE" Marine Oil Engines

3 1/2 H.P., 5 H.P., and 10 H.P.

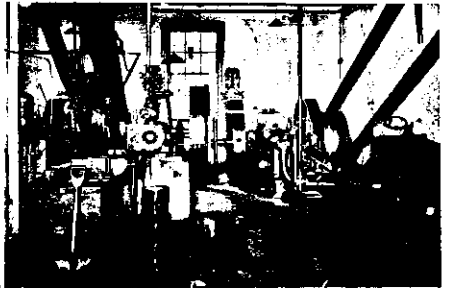
Head Office: THAMES, N.Z.

Branch at QUAY STREET, AUCKLAND, NEW ZEALAND.

What do You Think of This?

SOLD EVERYWHERE.

One Tin Sufficient for 8 Pints.



Three Views of our Factory at Mangere, where the Most Up-to-date Plant is installed for the Filtering, Pasteurising, and Chilling of Milk.

AMBURY, ENGLISH & CO.

DAIRYMEN, FARMERS, BUTTER MANUFACTURERS AND EXPORTERS.

Don't "Worry" about your Milk Supply!

We make it our business to save Customers the need. Our Milk is

Filtered

That means **Clean Milk**

Pasteurised and Chilled
(by which bacteria life is destroyed)

That means **Pure Milk**

And in addition to this we guarantee that the Milk is delivered with the full natural Cream, and without the addition of any preservative of any description.

What about Butter?

Certainly! We have the Best. The "Star" of the Butter Trade, and deliver it at your door at any address in the Town and Suburbs.

The increase in sales each year bears witness that

we give Patrons just what they want—

THE BEST.

And... What about Baby?

Just what we were going to mention. There are hundreds of Babies who have been built up and strengthened by our

Humanised Milk

and we frequently receive letters of appreciation and gratitude from mothers whose little ones have been saved to them by our Milk. We have a Nurse in daily attendance, qualified and trained in the work, and all advice and visiting is without charge. If Baby's food worries you kindly call or ring up **Phone 453.**

DEPOT—Karangahape Road.

BRANCHES—Ponsonby Road, Symonds Street, Hobson Street, Devonport, Parnell, Mt. Eden, Jervois Road and Epsom.