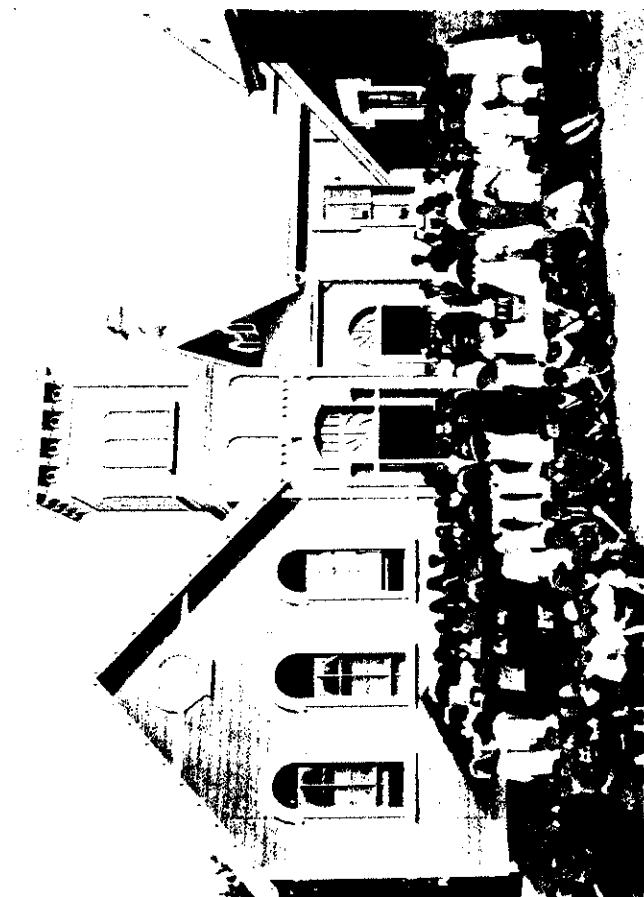




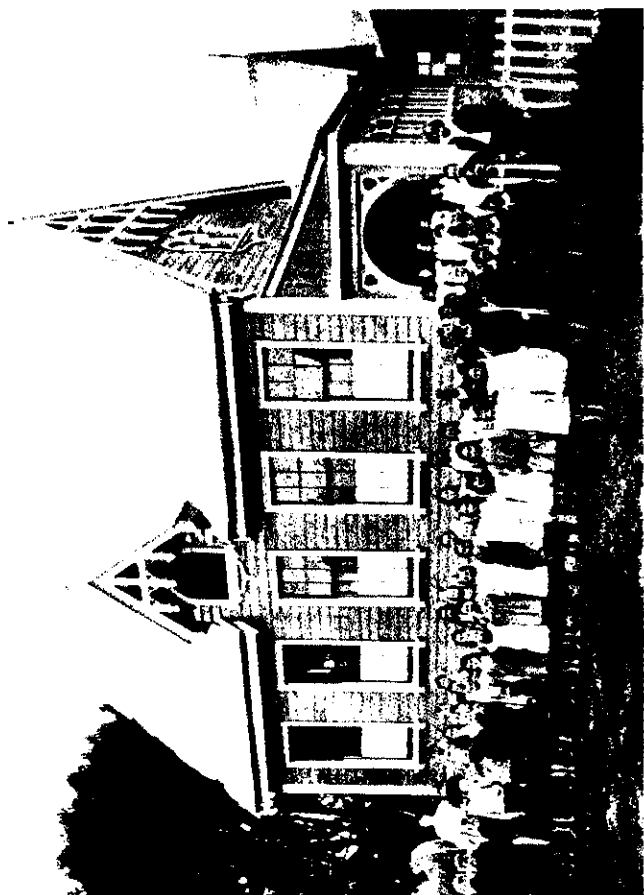
PARHAKA OF TO-DAY: THE WHITES STRONGHOLD ADDERSISED.

Parhaka, 20 miles south of New Plymouth, which for many years was under the influence of the late Prophet, Te Whiti, whose aim was to draw a dividing line between his people and the pakeha.



THE MOTUEKA HIGH SCHOOL, MOTUEKA.

W. Brails photo.



HOOGLAN SCHOOL, RIIWAKA.