



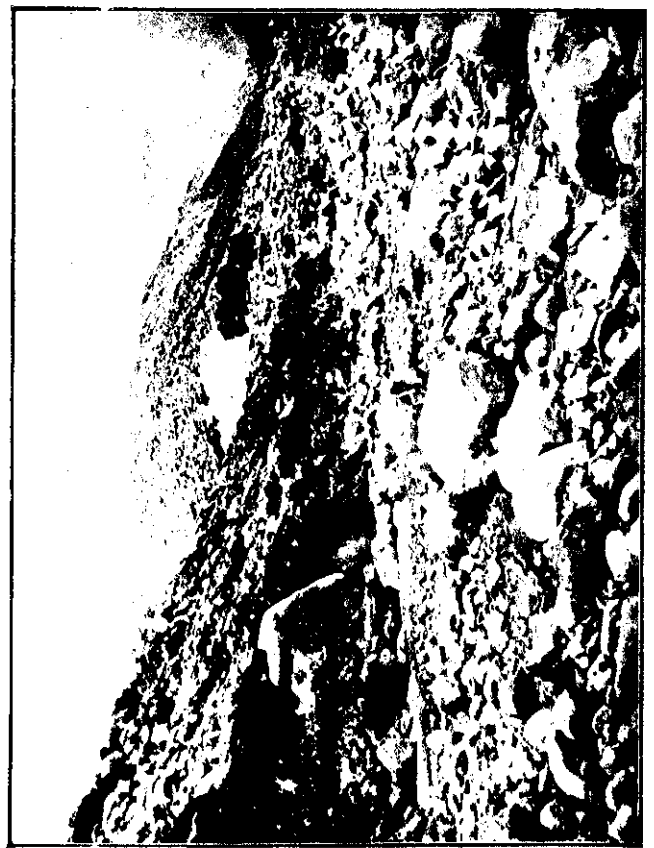
NGAURUHOE'S CRATER BEFORE LAST WEEK'S ERUPTION



STEAM VENT AT THE SIDE OF THE RED CRATER, TONGARIRO.



NGAURUHOE FROM NEAR THE WHAKAPAPA STREAM.



DESERT AND RIVER BED ON THE SLOPE OF TONGARIRO, NAURUHOE IN THE BACKGROUND.

THE SENSATIONAL ERUPTION OF NGAURUHOE—SCENES IN THE DOMINION'S NATIONAL PARK.