

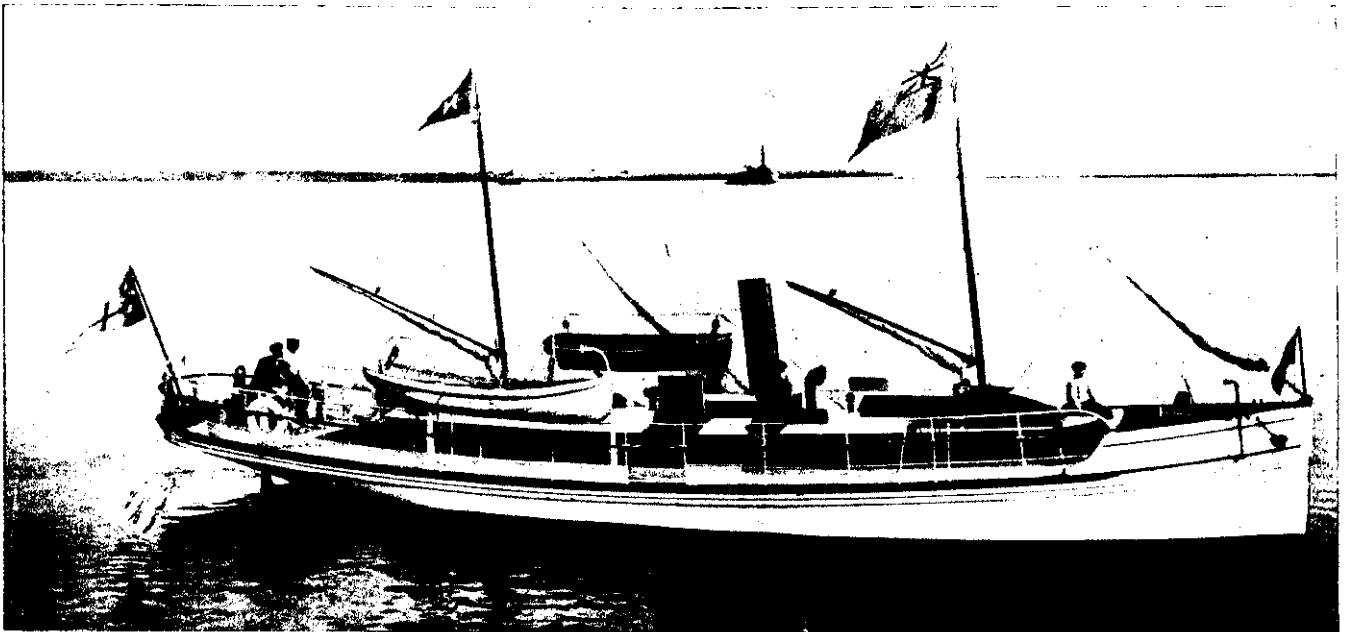
**ONE OF NELSON'S CHIEF INDUSTRIES.**

At the corner of Gloucester and Vanguard-streets, Nelson, stands one of the largest and best equipped premises of the kind in the Dominion; it is the jam factory of Messrs. S. Kirkpatrick and Co., which covers an acre and a-half of land, and is a credit to the city and province of Nelson. Mr. Kirkpatrick is in his luxurious office, and looks well after

ready for the copper boilers in the kitchen; but ere entering that wonderful culinary department, let us pause and see how the jam-tins are made: here a steel arm with missive blades is striking off thousands of quaintly shaped tin lids; there is another mysterious machine rolling up endless yards of bright tin, which another soldier into cylinders; yet another iron worker fits on the bottom, and we have now a tin

soldered on, a metal frame, slung at the corners by chains, is let down by aid of differential block and tackle, and cooked in a great wooden trough, steam again being the agent employed. One thing I much admired was the great care which the firm exercises in the selection of fruits intended for the tin selection of jam, and the capital processes under which it all goes before we have it ready for the table. These

the preserving department, from the boiling coppers to the cooling vats, from the paring and sorting rooms to the pickling department, from the packing rooms to the store rooms, orderliness, system, and "clockliness" prevail; cleanliness, ventilation, and comfort for his 100 employees, appear to be Mr. Kirkpatrick's foremost principles. And so I leave this very excellent factory in full swing on the season's fruits,



H. Bennewitz, photo.

MR. KIRKPATRICK'S BEAUTIFUL MOTOR YACHT, QUEEN OF BEAUTY.

a holiday trip in his beautiful yacht, The Queen of Beauty, on the Sounds. Yes, he willingly shows me where and how all the wonderful and delightful jams, conserves, and sweet spices are manufactured. Let us look! This is the receiving room, where fruit, mostly apricots, is being weighed, checked, and passed in. It is arriving direct from the gardens in boxes. As we saunter through the animated scene of fruit-owners delivering their produce, and employees receiving it—I note that even here haste is orderly. In the picking room we find dozens of smart-looking girls busy sorting and cleaning the fruit

made, which, when it has been sterilised, is ready to receive its preserves. The machinery of this department has been so perfected by the enterprising proprietor that one machine alone can turn out 3,000 tins in an hour. In the kitchen rows and rows of great copper boilers sit over steam pipes cooking tons of fruit, and the operation is being assiduously attended to by the cooks. Here, too, is every convenience in the way of up-to-date machinery, amongst which a marmalade maker, a chipping machine, and a fruit-stoning machine, are noteworthy. When the tins of preserving fruit have been filled, and the lids

are some of the secrets of our wholesome "K" jams, and has done so much to build up the fortunes of this eminent firm and made those delicacies of our homes so famous. In addition to that of jam and preserved fruit manufacture, Mr. Kirkpatrick has undertaken the manufacture of spices and jellies, all of which have found much favour in the market, so that throughout our Dominion "K" manufactures have long become indispensable articles of daily consumption. From the tin making to the tin packing department, from the offices to the kitchen, from the receiving room to

**THE QUEEN OF BEAUTY.**

The illustration given above represents the popular Mr. Kirkpatrick's very handsome motor yacht, the Queen of Beauty, with all her beautiful lines, and flying her Blue Ensign, the burgee of the Royal New Zealand Yacht Squadron, and the owner's flag. She rides the water like any duck, and her dimensions are:—Length, 60ft.; beam, 12ft.; draught 5ft. 6in.; 35 h.p.; and speed, 8 knots. She has just returned from the Sounds, whither she has been on a ten days' cruise.



F. N. Jones, photo.

KIRKPATRICK'S JAM FACTORY, A FEATURE OF NELSON AND ONE OF THE FINEST EQUIPPED ESTABLISHMENTS OF THE KIND SOUTH OF THE LINE.

**NELSON'S ANNIVERSARY: SOME VIEWS OF THIS BEAUTIFUL CITY AND SURROUNDINGS.**