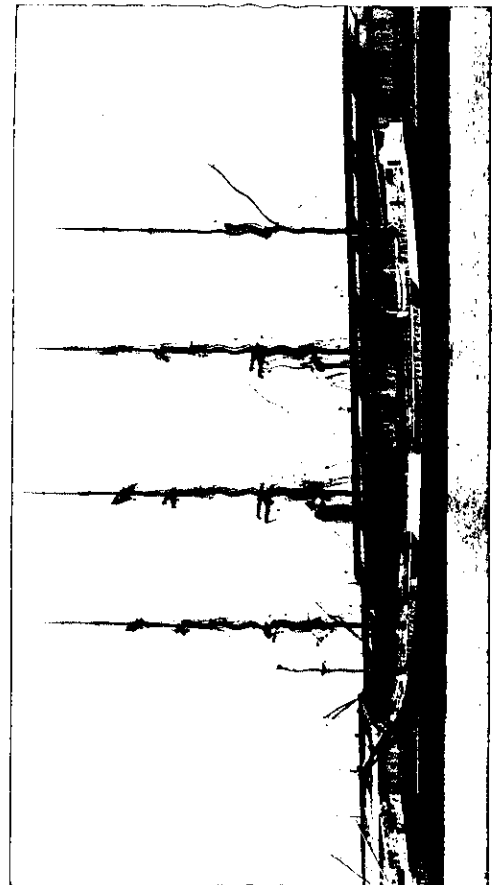


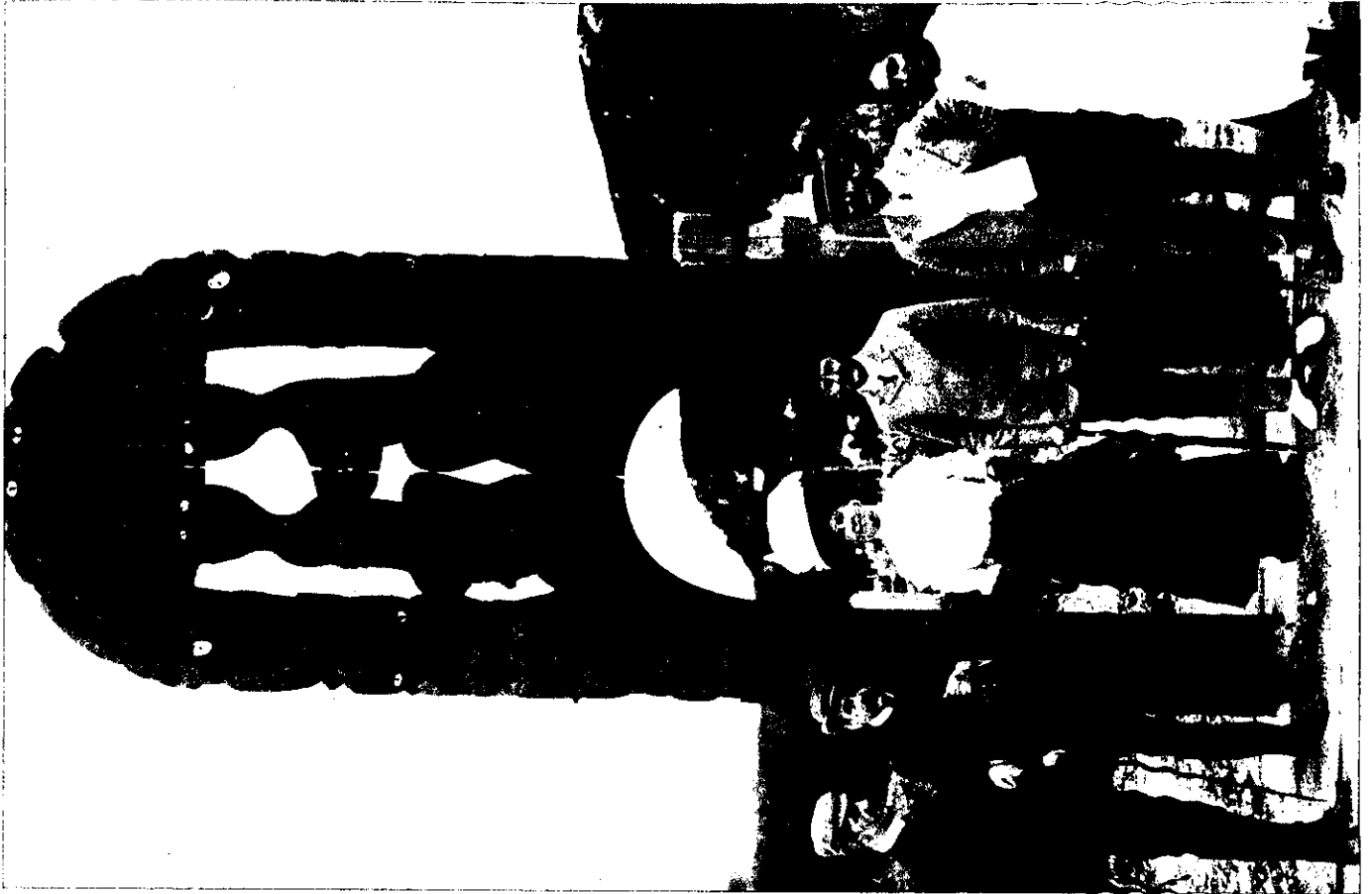
MRS. GIBSON GIVING AN EXHIBITION OF SPRINTING IN AUCKLAND.



MRS. GIBSON GIVING AN EXHIBITION DISPLAY, PAGED BY A "CRACK" FOUR.



FOUR-MASTED BARQUE N.M. NOW IN AUCKLAND HARBOUR. Consigned to W. S. Laurie with a large cargo of basic slag and other manures for Auckland merchants.



MADAME ADA CROSSLEY, WITH HER HUSBAND AND SOME MEMBERS OF HER CONCERT PARTY, AT THE GATE OF THE MAORI PA, WAKAREWAREWA.

Madame Popakura has been doing the honours.