

Mrs Buckeridge, who has been visiting various friends in Gisborne, returned to Napier last week.

Mr., Mrs., and Miss White have gone to Christchurch for the Christmas holidays.

E.L.S.A.

NEW PLYMOUTH.

Dear Bee, December 19.

THE BREAKING-UP

ceremony in connection with the New Plymouth High School took place last Thursday afternoon, at which a large crowd of parents and friends were present. Instead of afternoon tea being provided after the presentation of prizes, this time the guests partook of it before the ceremony started, which was much more enjoyable, and appreciated doubly so after one's long walk to get to the school. The *dux* of the school this year was Miss Dowling.

Among those present were:—Mrs Ward, pretty pale grey voile, with deep silk folded belt black crinoline straw hat, with rosettes of black ribbon and feathers; Mrs Osborne, golden brown silk taffetas, bonnet relieved with cream; Mrs Cooke, black and white striped muslin, white embroidered yoke, black feathered toque; Mrs Bewley looked well in a black and white muslin, with wistaria floral border, black hat, with pale pink roses; Miss Gwen Bewley, pretty white embroidered muslin, dainty Tuscan hat, with muslin bows; Miss Bertha Mathews cloaked charming in a white tuckered muslin, heliotrope ribbon sash, Tuscan hat, with muslin bows; Mrs MacDiarmid, brown silk taffetas, cream lace vest, with kimono bodice, outlined with cream insertion, brown toque trimmed with shaded ribbon and cream roses; Miss Marshall, navy blue and white striped muslin, white embroidered yoke, brown hat, with shaded roses; Miss Ruth Horrocks (Auckland), cream and blue spotted voile, pretty cornflower blue hat, and tie; Mrs Foote, navy blue and white

striped muslin, deep lace yoke, black silk taffetas hat, with feathers; Mrs S. Rennell, dark green tweed coat and skirt, pale blue and white floral muslin blouse, white taffetas hat, with feathers, white feather boa; Mrs Evans, dove grey coat and skirt, pale blue crinoline straw and tulle hat, trimmed with large white feathers; Mrs Ray; Miss Ray, white linen costume, Tuscan hat, with red roses; Miss S. Thomson, embroidered tussore silk, Tuscan hat, swathed with green tulle and pink and cream roses; Mrs H. Russell, black costume; Mrs S. Shaw, dark green flecked tweed costume, pinfore bodice over cream muslin blouse, biscuit-coloured silk hat, trimmed with silk rosettes and green quills; Mrs W. Shaw, slate grey costume, black and white hat, with black and white muslin ruche; Mrs Kimbell, white embroidered muslin, emerald green straw hat, swathed with a lighter green silk; Miss Wade, black muslin semi-Empire frock, white lace yoke, pretty hat to correspond; Miss Pridham, white tuckered tussore silk, with cream lace motifs on bodice, white chip straw hat, with ribbon rosettes and marguerite daisies; Mrs H. Bailey, brown tweed coat and skirt, green and brown plaited straw hat, swathed with brown tulle; Miss Blundell, pale green linen, white embroidered muslin hat, with pale pink and green ribbon rosettes; Miss A. Kemp, lettuce-green linen, with pinfore bodice over white muslin blouse, burnt straw hat with red roses; Miss C. Douglas, cream cloth coat and skirt, white felt hat, with pale blue floral ribbon rosettes; Mrs. Dowling, black voile faced with white silk, black and white hat; Miss D. Roy, lettuce-green linen trimmed with cross strappings of green and white striped linen, Tuscan hat with red and pink roses; Miss Gladys Roy, pale blue voile, white lace yoke, Tuscan hat trimmed with daisies; Mrs. Fonkes, black voile costume, Maltese lace scarf, bonnet relieved with white; Mrs. Newton King, black voile costume inset with cream lace, cream lace yoke, black hat to correspond; Mrs. Glasgow, white embroidered linen Eton costume, moss-green straw hat with pale pink roses and green grasses; Mrs. Quilliam, black coat and skirt, cream silk blouse, black and white hat with shaded purple flowers; Miss

Quilliam, dainty pale blue and white striped voile, square yoke of white lace, outlined with pale blue silk, pale fawn Tuscan hat, lined with frilled Valenciennes lace, and trimmed with pale pink roses and green and pink tulle; Miss Smith, cream costume, lace yoke, rose pink hat with shaded feathers; Miss — Smith, pale grey and white striped voile, cream lace yoke outlined with cream insertion, cream hat finished with roses and tulle; Miss A. Wilson, pale blue floral muslin trimmed with Valenciennes lace, brown hat trimmed with rosettes of primrose silk; Miss Biss, cream Eton costume, pale blue muslin blouse, black and white feathered hat; Miss Skinner, natterly blue costume, with silk blouse, relieved with cream tuckered silk yoke, finished with cream lace insertion, dainty cream hat en suite; Miss L. Skinner, biscuit-coloured striped voile, with cream silk and lace yoke, Tuscan hat with shaded roses; Miss Percy Smith, red and white striped costume, hat to correspond; Mrs. Atkinson, brown chiffon taffetas, cream lace yoke and shoulder straps, brown crinoline straw hat finished with tulle rosettes; Miss Bedford, white embroidered muslin, pale blue floral ribbon sash, black hat; Mrs. Mathews, navy blue costume, cream silk vest, black feathered toque; Miss D. Skinner, white embroidered muslin, white and heliotrope hat trimmed with wistaria; Mrs. Bollinger, brown skirt, white muslin blouse, brown straw hat with ribbon rosettes; Mrs. O. Haddrell, white linen costume, hat to correspond; Mrs. Duckhill, black silk with white crepe de chine, vest finished with sequined passementerie, black feathered hat.

PERSONAL ITEMS:

Mr. and Mrs. W. A. Alexander, with Misses Winnie and Phyllis Alexander, who for many years have lived in New Plymouth, have made Auckland their future home.

Miss Joyce Fitzherbert, New Plymouth, has gone to visit her many friends in Palmerston North, Carterton, and Dannevirke.

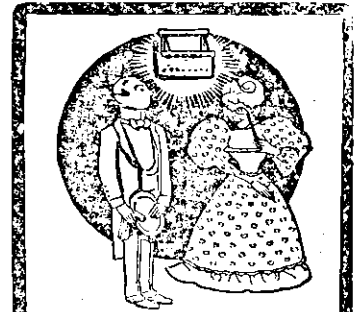
Misses Humphries, with Miss Syd. Capel, New Plymouth, are the guests of Mrs. Beamish, Hastings, the former's sister.

NANCY LEE.

PALMERSTON NORTH

Dear Bee, December 18.

MR. H. E. GUNTER'S PUPILS. or, I should say, advanced pupils, gave a most successful concert in the Municipal Hall on last Thursday night. The attendance was large and enthusiastic. The opening item of the programme was a duet, *Chaminade's "Andante and Scherzetto,"* played by Miss Marjory Barmicant and Miss Vera Humphries. Other items were *Bachmannoff's "Prelude,"* by Miss Vera Humphries, Chopin's *"Impromptu in A Flat"* by Miss Elizabeth Grant, and a duet on two pianos, *"Le Matin,"* by the Misses Mabel Evans and Nora St. Hill. Mr. Gunter's own contribution received the ovation of the evening. The vocalists were all well-known and popular local singers. Mrs.



Jack gets every woman's heart By his always looking smart. Gained the love of dearest Nellie, Doing for his clothes the DALLI.

"Dalli" the best, most simple and most comfortable way of ironing. Independent of stove and gas, it can be used anywhere. Non-inflammatory, fuel without noxious fumes. No risk to face, healthier and safer than any other iron.



Of all Storekeepers. If any difficulty apply to:—SARGENTSON & EYRE, LTD., Auckland and Wellington.



GIVE THE BABIES A CHANCE.

THE best food for infants is Human Milk, the best substitute for Human Milk is **Humanised Milk**. The above photographs are of children fed solely on **Humanised Milk** for the past six months. The two are twins, and a more lovely pair of girl babies are not to be found in New Zealand; the other, Baby Runciman, is a fine specimen of the sterner sex, whose mother was unable to feed him on the breast, but, being determined to rear her boy, fed him on **Humanised Milk** supplied by

Ambury, English & Co.

with the above results.

Our Nurse, Miss Johnson, trained by Dr. Tully King, of Dunedin, has now more than **100 Babies** to visit and prepare the Milk for.

We also supply **Humanised Milk for the Plunket Committee.**

If requested, our Nurse Johnson will visit, free of charge, any home in the City or Suburbs, and advise mothers in the use of **Humanised Milk**. During the past nine months not one child fed on **Humanised Milk** supplied by

Ambury, English & Co.

under Nurse Johnson's supervision has died, and nearly all are thriving rapidly.

OUR FILTERED, PASTEURISED and CHILLED MILK and "STAR" BUTTER is supplied throughout the City and Suburbs.