

The World of Fashion

(By MARGUERITE.)

At the present moment we are suffering from the latest malady a la mode, which is nothing more or less than a fever of unrest, produced by the near approach of the holiday season.

Certainly the demand for holidays is increasing and spreading among all classes. Men and women now weary for change of scene and environment far more readily than they did in the days when the wheel of life revolved more slowly. In these days of strenuous excitement and strenuous pleasure, holidays are counted essential attributes of modern existence, without which life would be scarcely worth living.

Destination seems to be of comparatively small importance. Any place will serve, provided it supplies the novelty and the recreation society is in search of. All that the up-to-date Pilgrims of Pleasure demand is that their holidays shall provide them with some new excitement that will distract their minds and give them some respite from the pursuits they have so feverishly followed during the past few weeks, and send them back refreshed and rejuvenated, ready to participate in their cherished joys with greater zest and enthusiasm than before.

Under these conditions they are even prepared to enjoy the quiet of the country and to find rural life not only tolerable, but positively attractive—provided always that they can have their dose of

rustic pleasure administered in tabloid form. The shorter the holiday the more enjoyable it is in their eyes, and the more eagerly it is sought after, for the less fear there is of it being dull, boredom and dullness being the two lugsbears before which all are prepared to flee.

Practical and Pretty Holiday Attire.

For long-distance travelling there is really no better choice than a very fine cloth, a type of serge, so light in weight and so cool in appearance that it might be cotton, though it shares not the proclivity of cotton—yes, and of tussore and alpaca, both cool materials also—for crushing and creasing.

I saw such a cloth frock the other day in shades of grey stripes, made with a box-pleated skirt very neatly stitched about the hips and, of course, cut a convenient walking length, and a coat to match, buttoned thrice down and then sloped away to the back, where more buttons secured for it a high-waisted air, above the neatly made "tails." To be worn with it was a "Homburg" of material to match, with a bunch of peacock feathers at one side.

When the coat was removed a bobbinet blouse would be displayed, overlaid

with lace-braid in a bold pattern, accentuating wheels of fine blue crochet.

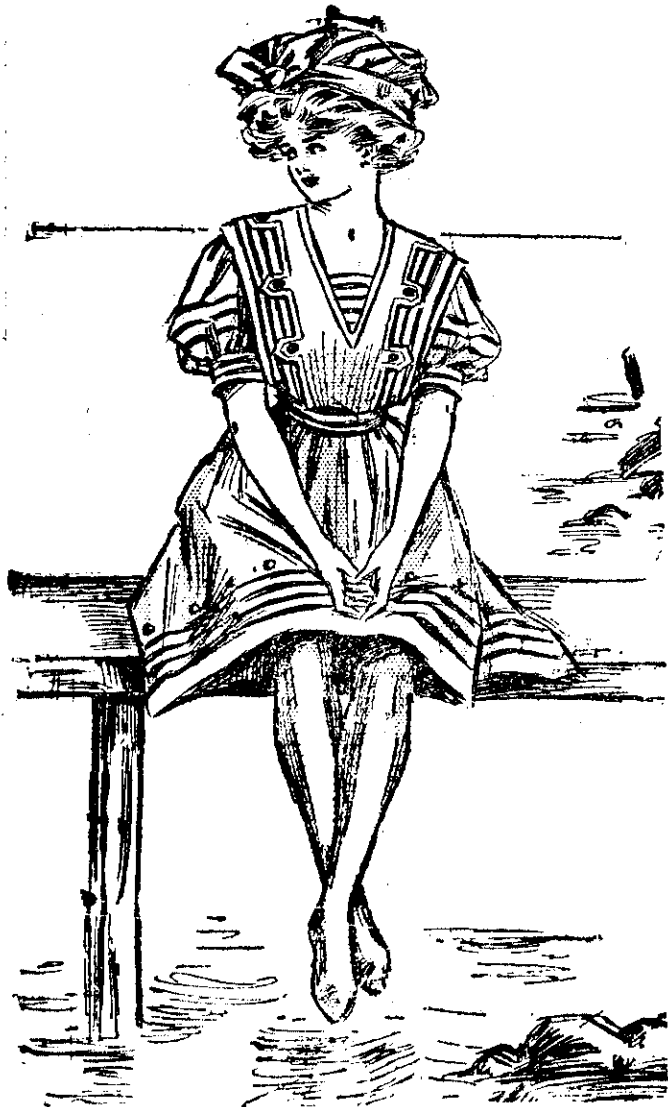
For the promenade most certainly take tussore and cotton, and do not forget that with all coat and skirt tailor-made "trousseaux" the black satin ceinture is a sign of smartness, worn high over the chemisette-bouise of pleated white net, with a cravat to match, also pleated and big. Among the tussorees my allegiance is willingly given to nickel silver, and a still paler grey shade, as well as to certain editions of tan, to wit, khaki and apricot. I do not think the more brightly coloured tussorees so successful.

In bathing costumes there is little new to notify. The favourite materials are serge (the varieties known here as "anacoste" and "escot" being the favourite ones) and alpaca. Black, navy blue, red and white, are the usual colours, the first and last being considered the best to resist sea water. White, unless the material is excessively thick and, consequently heavy, becomes semi-transparent when wet, and therefore requires to be lined, thus greatly complicating the "facon." Sky blue is a colour that is often employed for the taffetas costumes. The present fashion in dress shows itself in the ceinture-scharpe, which, in a modified form, is often seen on bathing costumes, and also in the shaped skirt fitting smoothly over the hips, and on which the trimmings are so arranged as to simulate an opening at the side. Broad, of course, is still used as a trimming, but soutache is newer, and very effective. Sometimes the two are combined, or else the soutache, of a contrasting colour, is used on the cross-way bands of the material to form a trimming. The design



A SMART TOILETTE.

Soft cream crepe de chine dress, with embroidery of peach colour and sash of the same colour in Liberty satin, picturesque hat of cream satin almost entirely covered with cream lace.



BATHING DRESS

Of fine white serge trimmed with pale green braid and brass buttons.



This hat is carried out in white straw lined with apple green and swathed with apple green velvet, while a large cluster of white lilac is piled on one side.

REDFERN

IMPERIAL

Whalebone Corsets.

(Patented Corset)

A very beautiful model, made of white figured Broche.

For Short, Full Figures

Long below the Waist and short above.

Sold Everywhere