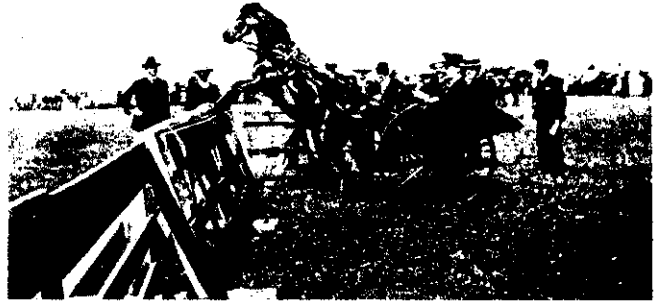


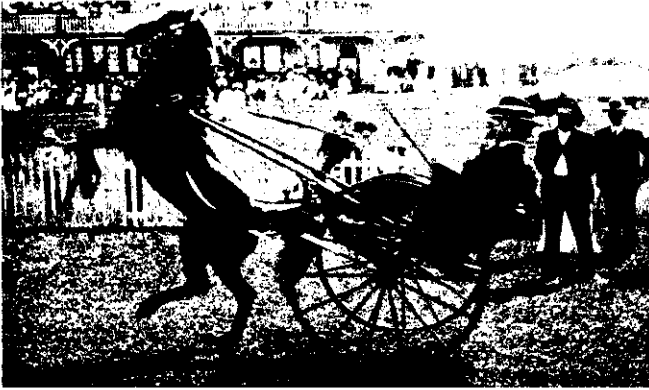


TAKING IT EASY.

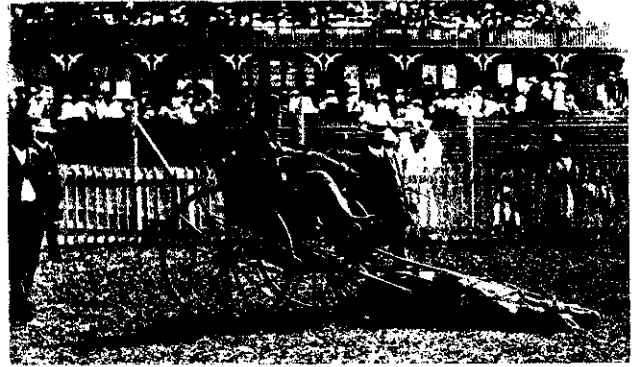


A CASE OF "LOOK BEFORE YOU LEAP."

Mr. O'Neil driving with Mr. E. T. Webster, Show Secretary.



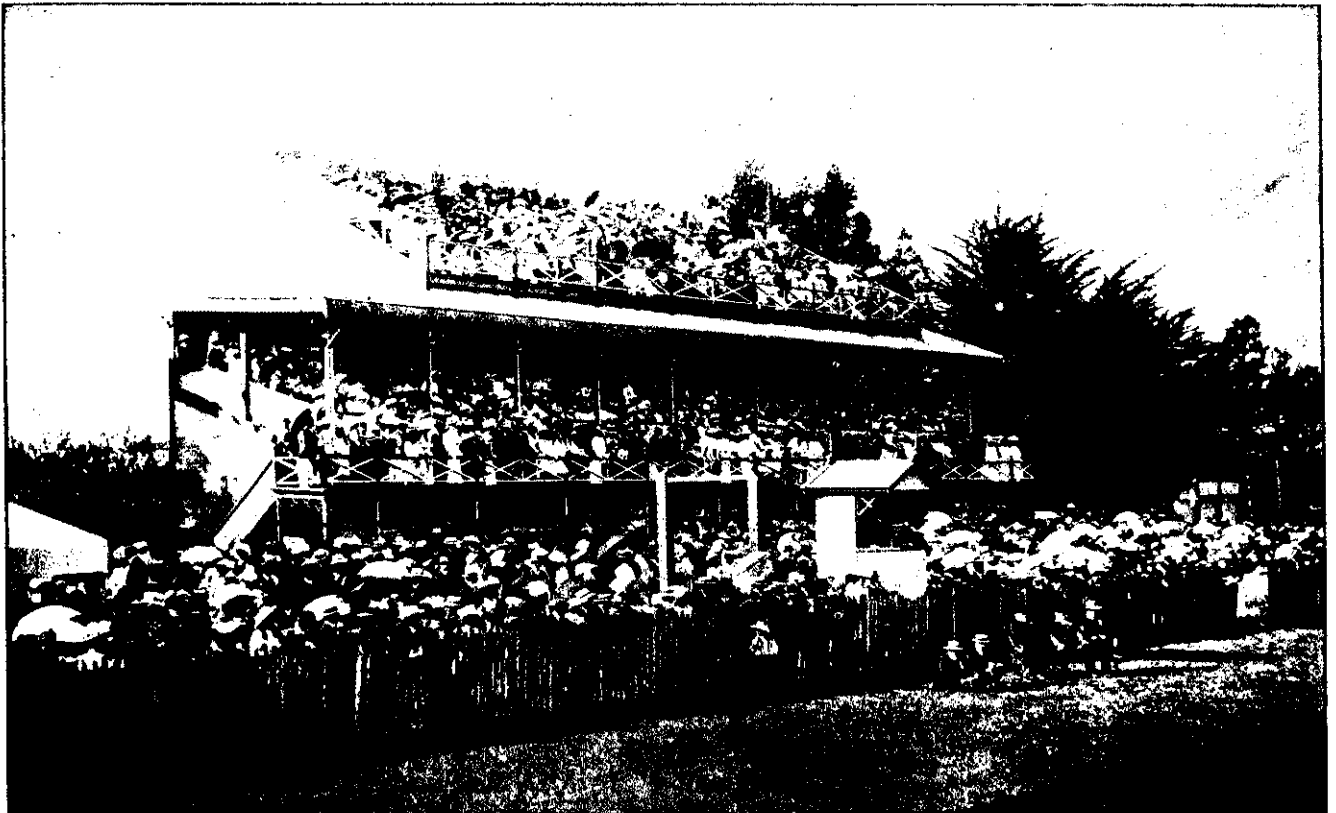
A CAKE WALK.



"DEAD TO THE WORLD."

**A CLEVER PONY AT THE TARANAKI SHOW.**

This handsome and highly-educated little equine, owned by Mr. E. O'Neil, caused much amusement by its remarkable tricks. It also took first prize for the best pony.



E. N. Jones, photo.

THE SPLENDID ATTENDANCE AT THE NELSON A. and P. SHOW.

Watching the Jumping Events from the Grandstand.