



T. Palmer, photo.
THE BARQUE POLLY, WHICH WENT ASHORE IN THE WHANGAREI RIVER, AND WAS REPORTED TO BE BREAKING UP.

Towards the end of last week, however, she unexpectedly floated off, and was towed to Whangarei Railway Wharf, where the photo here shown was taken. She has been towed to Auckland for examination, but it is generally feared that her sea-going days are over, as she must be heavily strained.



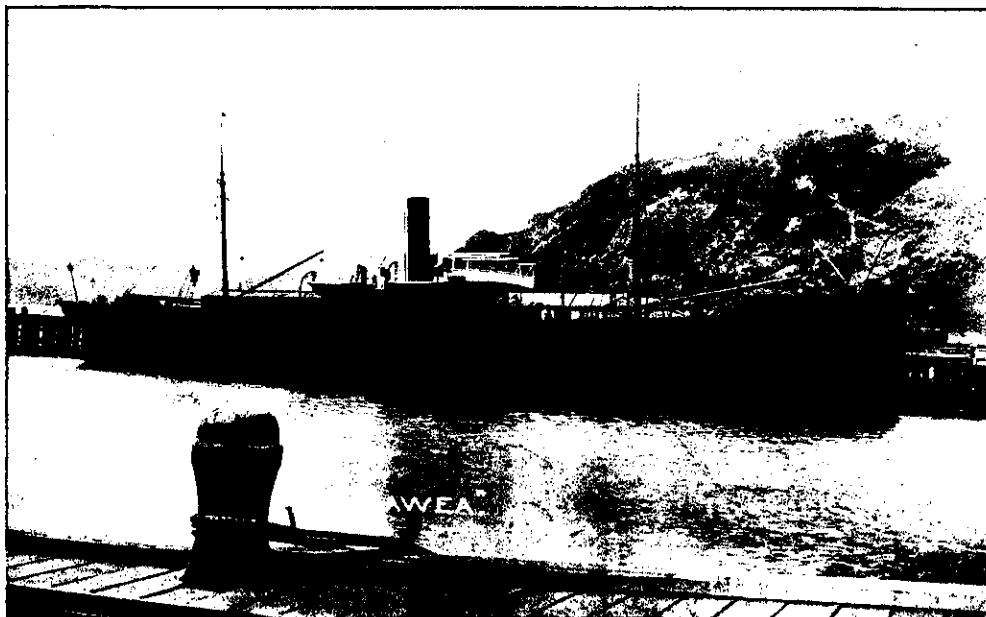
THE SENIOR TEAM.



Whalley, photo.

THE JUNIOR TEAM.

FOOTBALL TEAMS AT THE FAMOUS TE AUTE NATIVE COLLEGE, HAWKE'S BAY.



ADRIFT IN THE PACIFIC.

The Union Company's steamer Hawea broke her tail shaft while on the voyage from Australia to New Zealand. Some of her crew landed at Lord Howe Island, when she was some 80 miles off that spot, and gave news of the accident. Steamers are now searching for the disabled vessel.



COLOUR-SERGEANT FRIAR,

of the Owhinga (Auckland) Public School Cadets, who is now in England shooting at Bisley, where he came second in two important matches.