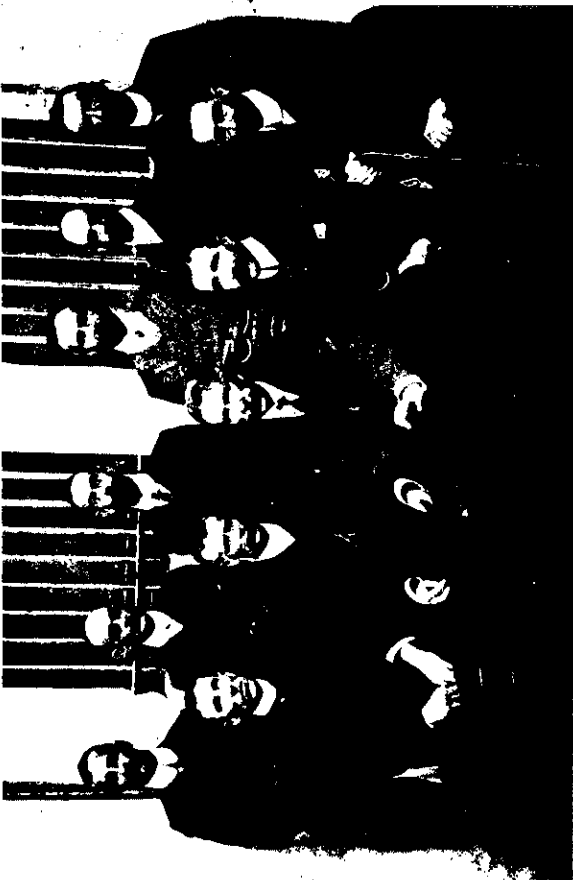




THE WELLINGTON SALVATION ARMY'S "PEOPLE'S PALACE HOTEL," WHICH WAS OPENED RECENTLY BY SIR JOSEPH WARD.



OPENING OF THE MAORI CONFERENCE IN THE TOWN HALL, WELLINGTON. Which has been deliberating on proposals to elevate the Maori, and induce him, among other things, to take up agricultural pursuits.



DELEGATES FROM THE CIVIL SERVICE WHO ATTENDED THE RECENT CONFERENCE OF THE CIVIL SERVICE ASSOCIATION IN WELLINGTON.

STANDING: Messrs. W. J. T. Wiggs (Chairman), R. B. Allen (Wellington), W. R. Joubert (Hawke's Bay), C. E. Adams (Gen. Treas.), J. D. Avery (Gen. Secy.), J. Killmer (Wellington), STEPHENS, W. G. Tait (Southland), H. R. Spence (Auckland), E. Tiveat (President, Wellington), F. Macdonald (Auckland), C. B. Matthews (Otago).



DELEGATES FROM THE DOMINION'S ACCLIMATISATION SOCIETIES IN CONFERENCE AT WELLINGTON. S-barof, photo.