

Continued from page 16.

summer temperature at Napier is 68.8, and the mean mid-winter temperature 49.9, which gives a mean annual range of 18.9. At Nice (Riviera), one of the most celebrated health resorts in the South of Europe, the mean midsummer temperature is 75.2, or 6.4 degrees higher than Napier, the mean midwinter temperature 45, or 4.9 degrees below Napier, and the mean annual range 30.2, or 11.3 degrees more than Napier. This shows that as regards temperature the climate of Napier is much more equable than that of Nice, being cooler in summer and warmer in winter.

The mean annual rainfall of Napier is 37.10 inches, and the mean number of days with rain is 130. The amount of sunshine is another very important climatic element. The total amount of sunshine at Napier during the year 1907 was 2,609 hours 55 minutes, or an average of 7 hours 9 minutes per day. The average yearly amount for the last three years was 2,560 hours. In this respect Napier compares very favourably with Nice, the Riviera, and most of the towns of Italy and Spain, which have a yearly average of 2,500 hours bright sunshine. This abundance of sunshine in Napier exists not only in summer, but a very large percentage is maintained even in winter. The average amount of sunshine in Napier during the winter months of June, July and August is 57



MR. A. E. EAGLETON.

The hardworking carnival secretary.

per cent. of the possible amount, while the yearly average is 60 per cent. of the possible amount. The average number of days in the year without recorded sunshine is only 18. Napier has a high mean solar radiation. The mean for 1907 was 122 degrees, as measured by a black bulb thermometer enclosed in a vacuum, and the average for the last three years was 120 degrees Fahrenheit. The mean daily velocity of the wind at Napier is 136 miles, or an average of 5.6 miles per hour, which, according to Beaufort's scale, corresponds to "very light breeze." The highest daily velocity recorded was 557 miles, on May 28th, 1907. This is equivalent to an average of 23 miles per hour, or "strong breeze."

#### THE CARNIVAL.

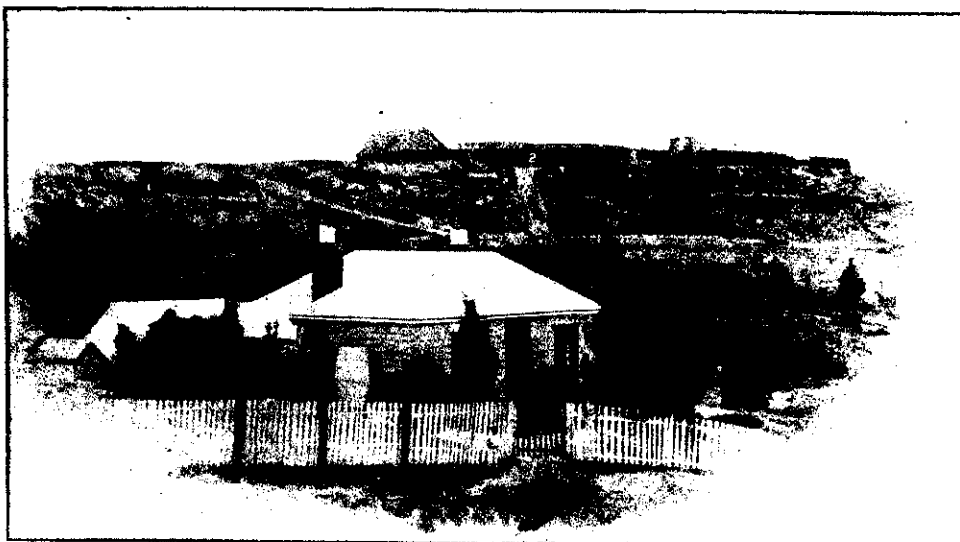
For the ten days' festivities the town has been given a gala appearance. All along the Marine Parade, as well as in Hastings-street, Tennyson-street, Shakespeare-road, Emerson-street, Browning-street and Dixon-street, there is a great display of flags and bunting. The flags were, for the most part, lent by the Government, but private persons have also done much to add to the decorations. The Executive of the Carnival is composed as follows: Chairman, Mr. J. V. Brown (Mayor); Treasurer, Captain M. N. Bower (town clerk); Committee, Messrs. C. Cunningham, A. C. Barnes, W. J. McGrath, E. Beecham, A. Howe, W. Plowman, T. P. Halpin, W. Simm, E. H. Ricketts, E. P. Smyrk, G. I. Clarke; Secretary, A. E. Eagleton. Under the able control of these gentlemen, assisted by an army of willing auxiliaries, a most complete programme of amusements, spectacles, processions, sports and competitions has been organised and carried out most successfully.

The celebrations commenced on Sunday, 15th inst., when there was a large church parade of volunteers, veterans, and cadets at St. John's (Anglican) Cathedral, when the old battalion colours

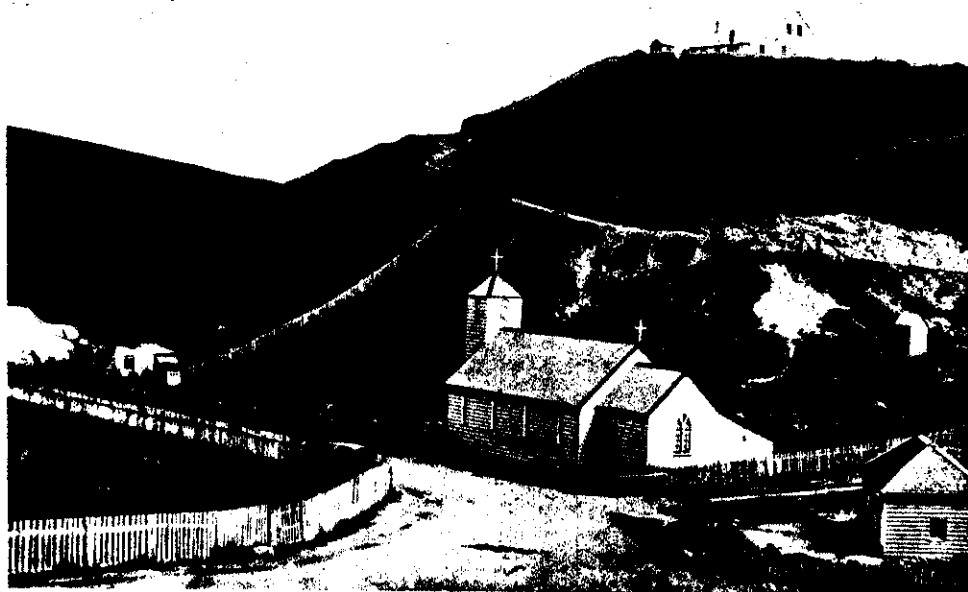


NAPIER IN 1864.

This view gives a good idea of the extent of the swamps, now filled in, through which the railway now runs, and upon which hundreds of houses are built. 1. The old Masonic hotel. 2. Corner of Hastings and Tennyson-street. 3. Where the railway station now stands.



1. The site of the present hospital. 2. The old barracks, built for the Imperial troops, 1858.



THE FIRST ROMAN CATHOLIC CHURCH, SHAKESPEARE ROAD.

PICTURES OF EARLY NAPIER.