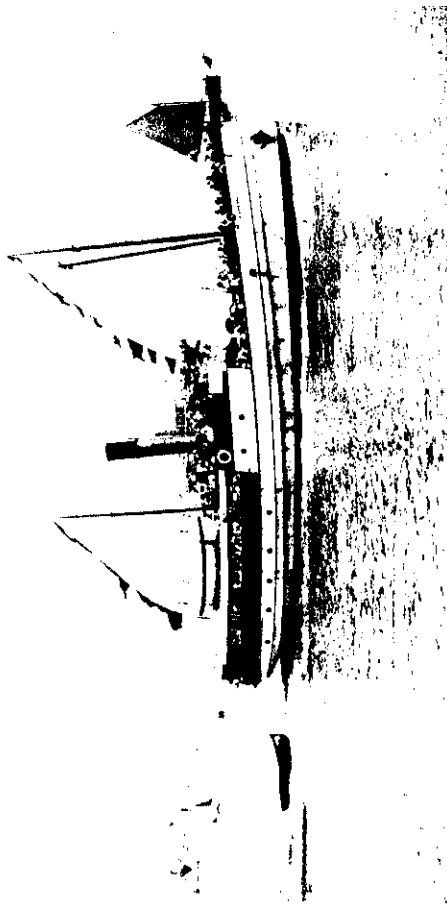
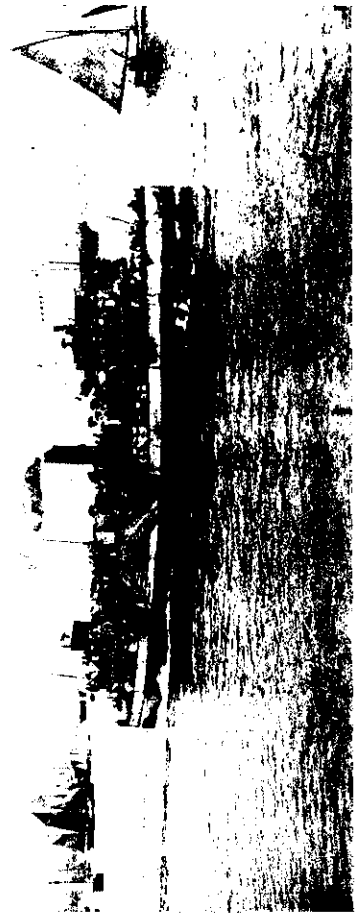


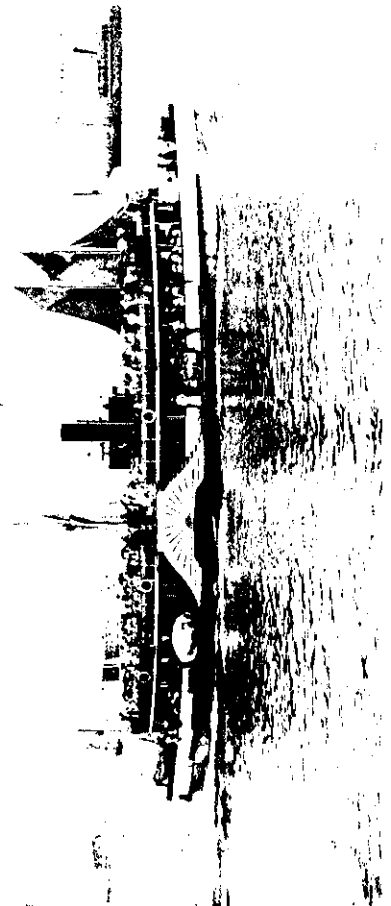
S.S. WAKATERE, EN ROUTE FOR COWES, WAHENE.



S.S. KAPANUI OFF FOR ST. HELENS.



THE EAGLE LEAVING FOR LAKE TAKAPUNA.



THE OSPREY WITH THE SPORTING SET FOR TAKAPUNA RACES.

PLEASURE SEEKERS ON EXCURSION STEAMERS AT AUCKLAND ON ANNIVERSARY DAY, 1908.