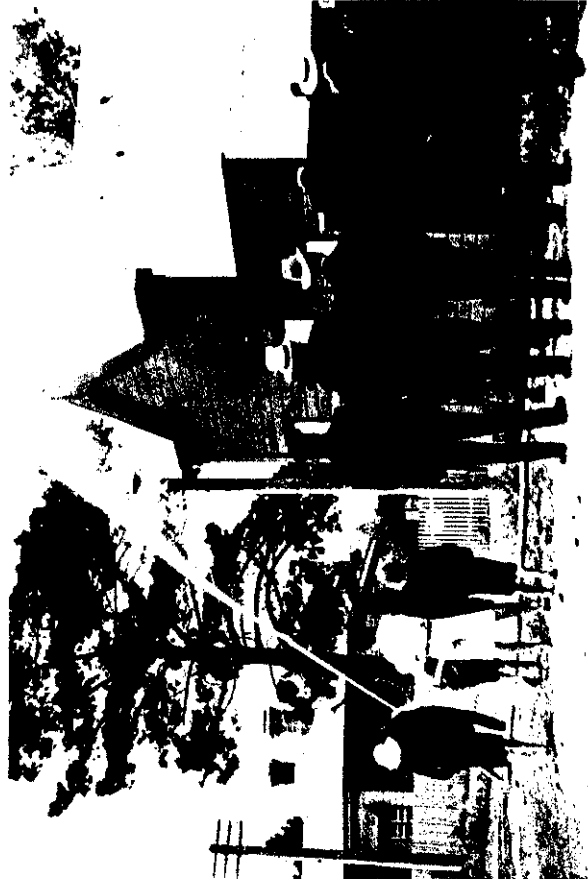
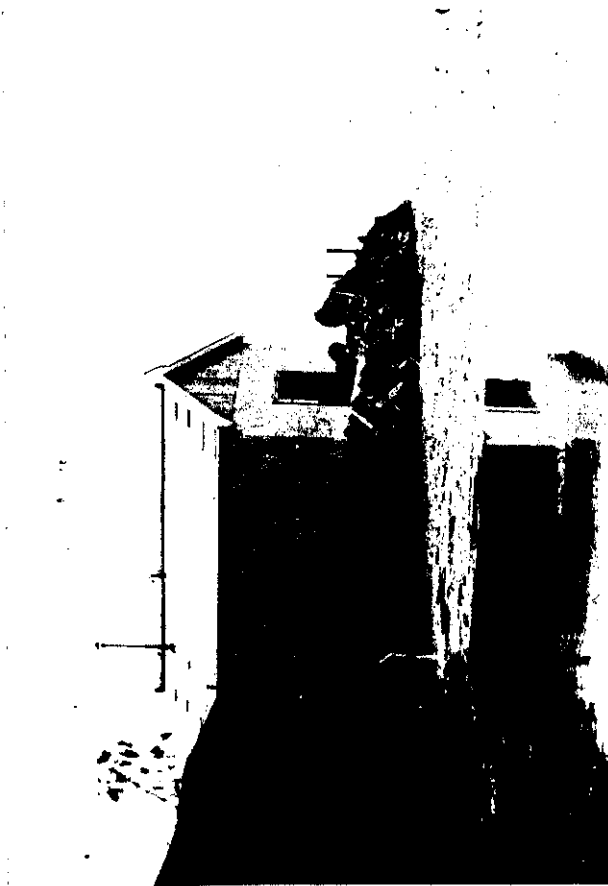




OFFICIALS AND GUESTS WHO WERE PRESENT AT THE OPENING.



TESTING THE FORCE OF WATER AT NORTHCOTE TOWNSHIP.



THE PUMPING STATION, LAKE TAKAPUNA.



ASCERTAINING THE PRESSURE.

NORTHCOTE'S NEW WATER SUPPLY.

Northcote's much-needed water supply was officially opened last week, when a number of prominent people were driven over to the Lake to witness the ceremony. The pipe main consists of approximately 10,000 feet of 8 inch cast-iron pipes from Lake Takapuna to the reservoir on Shad's Hill, 250 feet above sea level, with a capacity of 120,000 gallons. The pipes, etc., were supplied by Messrs. Brisbane, Limited, and the contractors for installing the system were Messrs. Rhodes and Tuck. The motive power at the pumping station is suction gas, the plant being supplied and installed by Messrs. J. J. Niven and Co., of Napier. The total cost of the supply was about £10,500.