

A Bachelor's Dream of the Ideal Woman.

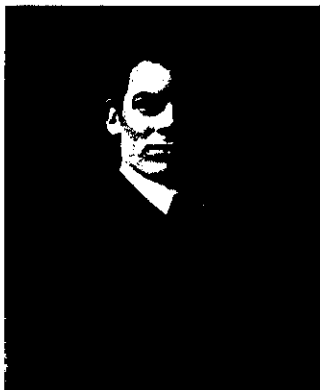
HOW TO BRING OUT THE BEST.

"If youth but knew," the proverb runs. I often think "If woman but knew"—knew the power she has of bringing out the best in man, and how he longs for her to do it. If she but knew how a man will laugh with her and despise her when she forgets the highest that is in her.

Most men take the tone of the con-

versation from the woman with whom they speak. I fancy women whose shrinking from evil is instinctive and not an artistic pose can do more for the regeneration of the world than a whole library of sermons.

A girl sometimes thinks that men want her to come down to a somewhat lower level, and will vote her dull and prudish if she craves for what the classics call "the upper air." No greater mistake is possible. Man, in his somewhat rough voyaging through the world, sees much of the grimmer side of life; but if he have an ideal left within him he craves for the woman of his dreams—the effortless purity of a stainless mind.



Schmidt, photo.

A SUCCESSFUL AUCKLAND CRICKETER.

Mr. L. G. Hemus, the young Auckland who gave a splendid batting display in the match against Canterbury. In the Northerner's first innings he compiled 148 by fine cricket.

DEATH OF A PROMINENT ATHLETE.

Mr. Alf. Bayly, president of the New Zealand Rugby Union, died at Wanganui on Dec. 13, aged 41 years. He was, some years ago, one of the leading New Zealand players, first representing the province of Taranaki at the age of 17. He captained the Taranaki team for many years, and in 1893 was a member of the second New Zealand team which toured Australia. Four years later he again visited Australia, this time as captain of the team. He is survived by a widow and three children.



Lafayette, photo, Sydney.

MISS AMY MURPHY.

The successful New Zealand vocalist in M. J. C. Williamson's "Blue Moon" Company, which opens in Auckland on Boxing Night.



THE KING'S CARD.



THE QUEEN'S CARD.

THE ROYAL CHRISTMAS CARDS FOR 1907.

The King and Queen still follow the custom of sending Christmas Cards to their friends. By courtesy of Messrs. Raphael Tuck, with permission from their Majesties, we are enabled to reproduce the cards selected for this year.