



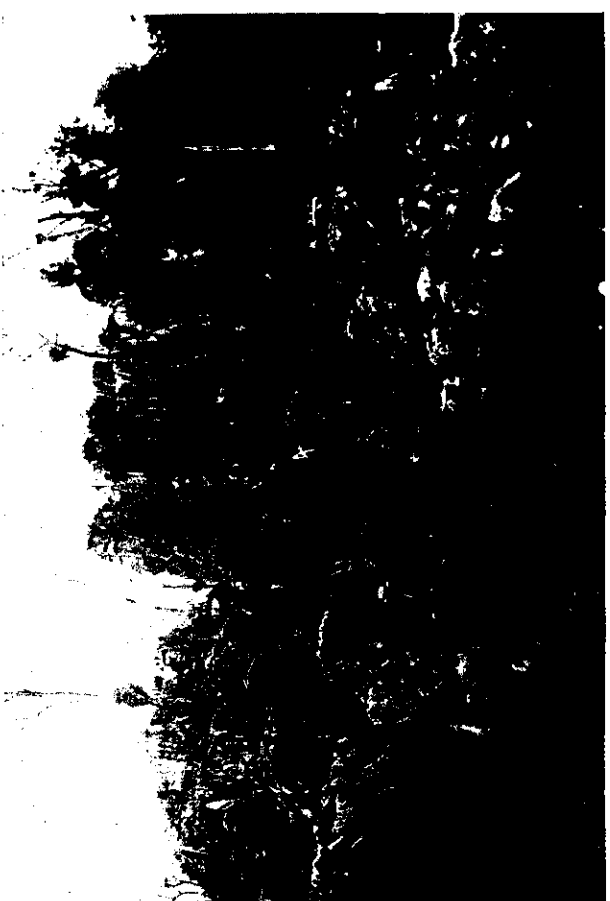
CURIOUS LIMESTONE FORMATION, KAMO SPRINGS.



NEAR PARAKAKI CAVES.



THE LIMESTONE ROCKS FROM THE RAILWAY LINE.



ANOTHER VIEW OF THE LIMESTONE ROCKS AT KAMO.

WHANGAREI AS A TOURIST RESORT; THE CURIOUS LIMESTONE PARK, KAMO.