

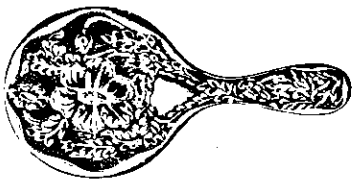
# STEWART DAWSON & CO.,

Jewellers,  
146 and 148 Queen Street, AUCKLAND.

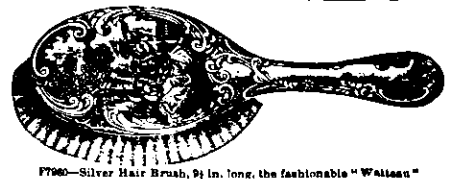
Our variety makes suitable selection easy.

Our Goods are Marked in Plain Figures at Cash Prices. Our Illustrated Booklet is sent Free to all.

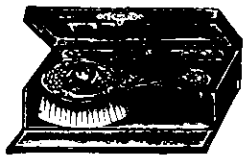
Goods posted free to any address.



G497—Silver-backed Hand Mirror, Newest Design, 9 in. long, 3 1/2 in. wide.  
Other designs at 25/-, 37/6, 50/- upwards.



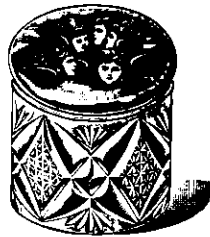
F700—Silver Hair Brush, 9 1/2 in. long, the fashionable "Watteau" design, 15/6.  
Great variety of others at 18/6, 22/6, 25/- upwards.



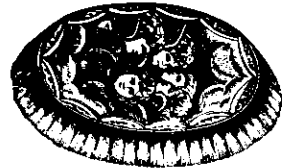
G573—Baby's Silver-mounted Brush and Comb in Velvet-lined Morocco Case, 16/6.



No. G171—Solid Silver and Cut Glass Toilet Bottles, in 2 sizes, 10/6 and 13/6.



No. G406—Heart Shape Gold-lined Silver-plated Trinket Box, 17/6.



G4020—Gent's Silver Buckel Military Brush "Angel Choir" design, 29/6.  
Other designs at 21/-, 22/6, 27/6.



F701—Silver-backed "Watteau" dozen Clothes and Hat Brushes 7 in. long, 18/6 each.



G3859—Fine Seal Purse, Massive Silver Mount, Silver Lock, 19/6.

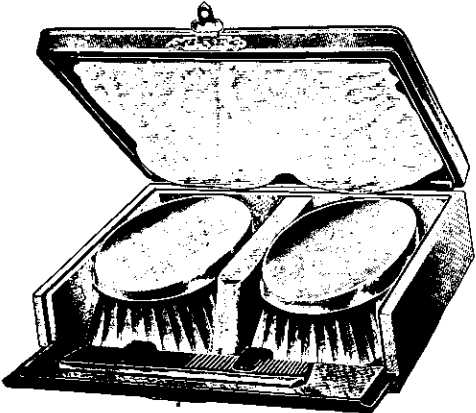
G6031—Solid Silver and Cut Glass Puff Box, 3 1/2 in. high, 10/6.  
Others, 11/6, 12/6, 14/6, 16/6 upwards.



G5838—Real Crocodile Skin Purse, with Solid Silver Mounts and Lock, 14/6.



G3682—Cut Glass and Solid Silver Jewellery Box, Two Sizes, 3 1/2 in. long 10/6; 5 in. long 16/6.



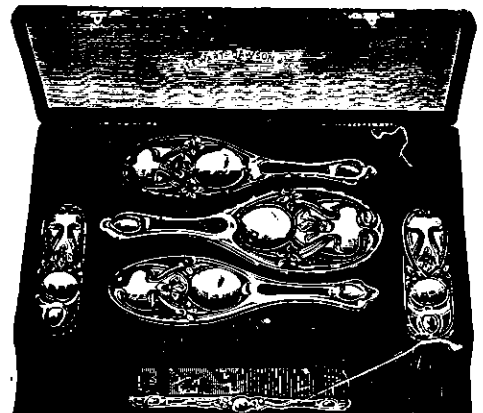
G7506—Case containing 2 Gent's Military Brushes, Solid Silver Concave Backs and Comb, £8 10/-.  
Other Silver Sets at 45/-, 52/6, and 60/-.



F8747—Solid Silver-mounted Comb, 7 1/2 in. long, 8/6.  
Great selection of others, 4/6, 5/6, 6/6, 7/6 up to 21/-.



G5035—Solid Silver and Best Steel Manicure Set, in Morocco Case, £3 7/6.  
Other sets at 21/-, 25/-, 27/6 upwards.



G3912—Very beautiful set of 2 Hair Brushes, Clothes Brush, Hat Brush, Mirror and Comb, all mounted in Solid Silver, £10 10/-.  
Other sets at 40/10/-, 48/10/-, 49/10/-.



Speed Launch "SLIM JIM," 30 feet by 5 feet, 15 h.p. Monarch Engine, speed over 15 miles per hour, designed and built by

## T. M. LANE & SONS,

Ship, Yacht, Launch Builders and Designers.

Designers and Builders of Auxiliary Schooner "Courtes of Hanbury," built for the N.Z. Government, and sister-ship "Samoia," Auxiliary Schooners "Kaeo," "Aotea," "Greyhound" and others.

OIL LAUNCHES ON SALE AND BUILT TO ORDER. Estimates and Designs on Application.

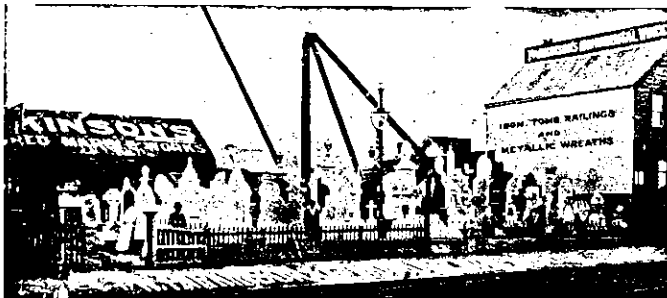
KING'S DRIVE, AUCKLAND, and TOTARA NORTH.

FOR SALE—MOTOR LAUNCH "SLIM JIM," fastest boat for her power and displacement in Australasia, now fitted up as a pleasure launch suitable for cruising. Price £250. Discount to cash purchaser. Apply T. M. LANE & SONS, Designers and Builders, King's Drive, Auckland.

SOLE AGENTS FOR THE  
**MONARCH OIL ENGINE**

From 1 1/2 h.p. up to 150 h.p.  
(2 and 4 cycle).

MOTOR LAUNCHES A SPECIALTY.



## W. PARKINSON & CO.,

Monumental Sculptors, [TELEPHONE 96.] VICTORIA ST. WEST, AUCKLAND.

Iron Yard, WAIKUMETE STATION. (Between Hobson Street and Nelson Street.) Sculptors for the Westland War and Coronation Memorials, N.Z. Factory Commemorative Statue in Albert Park, Reed Memorial in Albert Park, Roberts War Memorial. The Largest Stock of Marble, Granite and other Memorials in New Zealand. Catalogues on application. Iron Tomb Railings, Cemetery Walls, Slabs, Etc. A large stock of Porcelain Wreaths on hand. LOCAL TION—Take College Hill car and ask the conductor to put you down at Nelson Street. IT WILL PAY YOU.

ASK FOR  
**PEEK, FREAN & CO'S**  
**"Oyster Wafers"**

Dainty oyster-shaped Wafers, filled with deliciously flavoured cream.

PEEK, FREAN & CO., LTD., LONDON, ENGLAND.



## "DENTO-PHOTO CHAIN."

IN your judgment and opinion, which three pictures of MISS MARIE STUDHOLME (numbered 1 to 3) show her teeth so as to give her face the most pleasing expression? First prize, value £10, second, value £7. Copy of pictures, conditions, and full particulars may be obtained (FREE) from the chief lady-attendant at—

MR. HOWEY WALKER'S DENTAL SURGERIES,

NEAR HIS MAJESTY'S THEATRE.

OPPOSITE YATES' SEEDSMAN.