

Miss Richmond, black silk evening gown, transparent lace yoke; Mrs A. K. Kitchen, exquisite frock of black chiffon taffeta with berthe of wide Houghton lace, black velvet bow in her coiffure; Miss Willis also wore a becoming black evening gown with berthe of beautiful lace, pale pink roses in her hair; Miss A. Willis, white silk with lace and insertion and fine lace on her corsage, in her coiffure she wore a rosette of pastel blue velvet ribbon; Mrs A. Sheriff, pale blue silk evening blouse, with fichu of net and lace, black silk skirt; Miss Smith (Marton) wore a becoming frock of pale pink floral chiffon, with wide swathed silk belt and fichu of deep cream net; Mrs Pratt, (Waitotara), black silk muslin gown with deep yoke and berthe effect of real lace, on her corsage she wore a spray of pale cream roses; Mrs Fairburn, black silk, fichu of cream lace and net with pale pink roses; Mrs James Watt, beautiful pale blue broadened gown with berthe of lace and spray of roses on her corsage, Mrs Briggs, black silk gown with fichu of lace; Madame Briggs, deep maize broadened gown with exquisite trimmings; Mrs Saunders, black silk with fichu of cream net and lace; Mrs Gonville Saunders, black silk evening gown with berthe of real lace; Miss Inlay, black chiffon taffeta with collar of lace on her bodice; Mrs Inlay Saunders, soft white silk gown with lace and insertion; Mrs Montgomerie, black silk with vest of cream lace and tiny black velvet bows on it; Mrs A. Izard, white net frock made over white silk with frills edged with black velvet ribbon, berthe of net and lace; Mrs A. Good (Hawera), white silk blouse with lace and insertion, black skirt; Miss Harrison, pale pink silk blouse with bands of insertion, black skirt; Mrs Pharyzyn, dark grey velvet gown with collar and revers of cream lace; Mrs Arthur Davis, becoming white silk blouse with lace and insertion, black voile skirt; Mrs Beaumont (Dunedin), black silk with deep collar of real lace; Mrs Mackay wore a beautiful evening lace and net blouse, black silk skirt; Mrs Innes, black silk with lace yoke; Mrs Collier Campbell, pale heliotrope gown with deep berthe of real lace. There were also present Dr. and Mrs Skerman (Marton), Mrs Levette (Bulls), Mr and Mrs Horace Wilson.

HUIA.

PALMERSTON NORTH.

Dear Bee, November 23.

Winter seems to have returned, it is so bleak and cold. Last Saturday there was only a moderate attendance at the tennis courts. Mrs. Adams and Mrs. Pickett dispensed the afternoon tea. Mrs. Adams was wearing a grey skirt, cream blouse and grey hat; Mrs. Pickett, blue skirt, white embroidered linen blouse, a scarlet American sailor with scarlet tulle and flowers; Mrs. Gibbons, grey sea coat and skirt, black chiffon hat with black tips; Mrs. Hardon, blue skirt, long grey coat, navy mushroom hat with two shades of blue tulle; Mrs. Broad, wine-coloured tweed coat and skirt, velvet cuffs and collar of same shade, pale blue ermine hat with white flowers; Mrs. Colne, pale blue linen with small velvet spot, burnt straw hat with pink and crimson roses; Mrs. Bennett, light grey coat and skirt, pink ermine hat; Mrs. A. Thompson, grey coat and skirt, burnt straw American sailor, with pink and cream ribbon and pink flowers; Miss Waldegrave, navy blue skirt, cream and red striped blouse, burnt straw hat with narrow velvet bands and blue quills; Miss M. Waldegrave, navy blue skirt, white embroidered muslin blouse, white lace hat with pale pink flowers; Miss Fitzherbert, small grey-blue linen check, navy blue hat; Miss Lord, blue skirt, white linen coat and blouse, white linen hat with navy blue band; Miss Gwen Bell, black skirt, pale blue blouse, white hat with pale blue band; Miss Wilson, brown skirt, cream blouse, Panama hat; Miss H. Bell, Miss Belle Robinson, Miss Armstrong, Miss Reed, Messrs. Adams, Hardon, Wither, Barrard, Coles, Cunell, Swainson, McLean, Reed, Spencers, Smith, E. Waldegrave, Fulton, Burr, Reedy, Collins, M. Waldegrave, Moodie, Hogg, Pickett, Thompson, Dr. Putnam, and others.

The different tennis matches are progressing rapidly, the committee insisting that each round must be finished within a week, otherwise the competi-

tor failing to play his or her match is scratched. To-morrow a team of four ladies and six men come from Feilding to play a match with the local club.

THE WILLOUGHBY AND WARD LONDON COMEDY CO.

played a short season at the Opera House this week, "The Man from Mexico" and "The Talk of the Town" attracting large audiences. On the first night Mdlle. Dolores and party were present. Mdlle. Dolores wore a plain black evening dress with a pale blue velvet bow in her hair. Others I noticed were Mrs Davis, wearing a nil green crepe de chine with silver sequined berthe, pink roses in hair, long pale blue silk coat; Mrs Snow, cream voile skirt, cream spotted net and lace blouse, wide yellow silk belt, cluster of roses of same shade; Miss Snow, black crepe de chine, frills of narrow white Valenciennes lace on corsage, cream embroidered coat; Mrs Louissou, pale pink evening dress, Paris lace and pink roses on bodice; Mrs Park, black silk, black sequin berthe and cluster of crimson flowers; Miss Paris, black skirt, cream silk blouse; Mrs Bennett, pale blue satin and white chiffon; Mrs Gibbons, black striped net over black glace, frills edged with black satin ribbon, black sequin berthe; Mrs Colbeck, pink and heliotrope floral muslin, cream brocade coat; Mrs Bagnall, cream satin, white lace berthe; Mrs Stowe, black crepe de chine, fichu of cream spotted net; Miss Keeling, black skirt, cream and blue floral muslin blouse with white Valenciennes lace; Mrs Fickett, white satin and lace; Mrs Johnston, black striped gauze over silk, transparent elbow sleeves of black pin spotted net, pale blue silk chon; Miss Johnston, white muslin and lace, pale blue silk belt; Mrs J. E. Innes, emerald green velvet with some beautiful lace, spray of deep cream roses, cream coat; Mrs Milton, black silk, cream lace berthe and cluster of crimson roses, cream accordion-pleated cloak with swansdown; Mrs Warburton, black silk, silver sequined berthe; Miss Warburton, pale blue silk and white lace, long cream coat; Mrs W. Keeling, white lace over white satin; Mrs D. O. Shute, pale blue silk, white lace berthe, with spray of blue flowers; Miss Drew, black velvet skirt, pale pink silk blouse with cream lace yoke; Mrs A. Guy, black skirt, cream and pale blue blouse with lace; Mrs Ward, black evening dress with black chiffon frills; Mrs Holmes, cream voile skirt, cream spotted blouse over pink and blue floral silk, pale grey coat; Mrs Harold Abraham, pale pink crepe de chine, white lace berthe; Mrs Alys Riddiford, white muslin and lace; Mrs Hankins, black evening dress, cream coat; Miss Hankins, pink silk, white lace berthe, and cluster of pink roses, pink cape; Miss Fitzherbert, a dainty white muslin and lace frock made with cross-over bodice, large cluster of pink roses; Mrs F. E. McRae, black skirt, pale blue silk blouse, cream coat; Miss Ennsler, black silk, white chiffon on bodice; Miss Dalrymple, white voile and lace, crimson roses; Mrs S. Hump, white satin and lace, pale blue silk chon; Mrs J. Nash, black velvet, yoke of Paris tinted spotted net; Mrs Lissaman, black silk voile skirt, white silk blouse with frills of white accordion-pleated chiffon, pale grey accordion-pleated cape; Miss Wyatt, white embroidered muslin, blue silk belt and blue flowers, pale blue accordion-pleated cape with white swansdown; Mrs W. E. Smith, black brocade skirt, cream satin and lace blouse; Miss Belle Smith, cream satin and lace, crimson flowers; Mrs Freeth, cream voile skirt, cream and pink floral muslin with cream lace insertion; Mrs Fitzherbert, black evening dress, grey velvet coat; Mrs C. K. Waldegrave, black broadened black sequin berthe and cluster of pink and crimson roses; Miss Margaret Waldegrave, cream silk and lace, cream flowers with green foliage, long pale blue coat with white swansdown; Miss Dorothy Waldegrave, white muslin and lace, pale blue silk belt; Mrs Randolph, black crepe de chine with frills of black accordion-pleated chiffon on corsage and sleeves, cream coat; Miss Randolph, blue silk, Paris lace and cluster of pink roses on corsage; Miss O'Brien, white muslin and lace, pale blue silk belt; Miss — O'Brien, black velvet, rose-coloured sash and bow in hair; Mrs Rutherford, black evening dress, long cream coat; Miss Fegden, cream voile, cream chiffon, and touch of turquoise velvet on corsage, pink coat; Miss Knight in cream silk and lace, cream rose in hair, pink coat;

Miss —, Knight in cream with pink roses on bodice and in hair, blue coat; Mr and Mrs Council, Miss Armstrong, Miss Bond, the Misses Mowlem, Mr and Mrs S. Luxford, Miss Stannestad, Miss Akers, Messrs Harman, Abraham, Grant, Bagnall (2), Fitzherbert, Waldegrave (2), Freeth, Innes, Milton, Drew, Warburton, Guy, Hume, Holmes, Hankins, McRae, Sim, Gibbons, Bennett, Louissou, Colbeck, Davis, O'Brien, Nash, Mrs. Stowe and Martin.

On the second night Mr. and Mrs. Loughnan, Mrs. Kinear, Mr. and Mrs. Mellisop, Mr. and Mrs. Harold Abraham, Mr. and Mrs. Hobnes, Mr. and Mrs. Gibbons, Mrs. J. Pascal, Miss McLennan, Mrs. and Miss Smith, the Misses Park, Mr. and Mrs. Warburton, Miss Warburton, Mr. and Miss Keeling, Miss Phyllis Keeling, Mr. and Mrs. Freeth, Dr. and Mrs. O'Brien, Mrs. Shaw, Mrs. Buckley and others were present.

On Tuesday evening Mrs. Elliot Warburton gave a small supper party at her residence, Main-street, for Miss Gillan Scaife, a member of the London Comedy Company. Miss Scaife had been an old school friend of Miss Warburton when at Home some years ago. Mr. C. Warburton Gamble, of the same company, was also a guest. These present were Mr. and Mrs. Warburton, Miss Warburton, Miss Scaife, Mr. Gamble, Miss Margaret Waldegrave, Mr. Norman Waldegrave, Miss Armstrong, Miss Fitzherbert and Mr. Victor Fitzherbert.

On Saturday last Mrs. Inder, Alexandra-street, gave

A SUCCESSFUL TENNIS PARTY.

A dainty afternoon tea was served in the garden. Mrs. Inder received her guests in a black voile skirt and becoming pale blue silk blouse. Miss Inder was in cream with cream lace trimming; Mrs. Greig, black skirt, wine-coloured blouse, wine-coloured hat with green trimming; Miss Baker (New Plymouth), black skirt, cream silk and lace blouse, blue hat; Miss Park, navy blue coat and skirt, blue French sailor with green and red flowers; Mrs. Purcell, in blue with blue mushroom hat; Mrs. Rennell, grey coat and skirt, white cloth collar, blue hat with cornflowers; Mrs. Vernon, brown braided costume, black and white hat; Mrs. Foote, in cream with cream hat; Miss Hamilton (Sydney), blue voile and cream lace insertion, cream hat; Miss Tatton, pretty pink dress, pink hat with pink flowers, Messrs. Inder, Vernon-Reid, Purcell, Tatton (2), Bayes, Blackbourn, and Dr. Greig.

VIOLET.

WELLINGTON.

Dear Bee, November 23.

Gardens and gardening are at present the great topic, so Miss Johnston's

GARDEN PARTY ON FRIDAY

was very apropos. Fickle Fortune this time smiled on the hostess, and the weather was absolutely delightful, warm, and still, with the faintest haze tempering the heat of the sun. The garden itself was at its best, and the beautiful lawns, surrounded with gay flower beds, presented a charming picture. Tea, ices, and fruit salads were dispensed at various tents in the grounds, and a string band was stationed under a big tree. Miss Johnston wore a lovely dress of bronze and green shot glace with lace vest and ruffles, ermine toque swathed with tulle and wreathed with flowers; Mrs. C. Johnston, black and white striped colienne, chine belt; Mrs. Fitzgerald, black and white glace, Irish lace bolera, and Tuscan hat with shaded roses; Mrs. Williams, black crepe de chine, white ostrich boa, black chiffon toque; Mrs. Fitzroy, grey voile and white lace vest, grey and white chiffon toque; Mrs. Crawford, white and black striped glace, and toque of red roses; Mrs. Pearce, navy blue crepe de chine, blue hat; Mrs. Gince, black crepe de chine and handsome coat; Miss Stead (Christchurch), white muslin, pin-spotted with mauve, mauve belt, and dark blue hat with roses; Mrs. Denniston, ivory cloth and Nil green toque; Mrs. W. Johnston, white cloth with motifs of lace, rose pink hat; Mrs. D. Nathan, pale blue glace with bouzias of lace, pale blue hat with tips; Mrs. W. Turnbull, orchid mauve crepe de chine, with lace and chiffon blouse, mauve hat with tips; Miss Williams, periwinkle blue with chine sash; Mrs. Adams, bisquit voile with touches of mauve; Mrs. Statholme, deep blue chiffon, and floral hat; Miss Harcourt, pink and white floral voile, and

MAXWELL & MONTAGUE

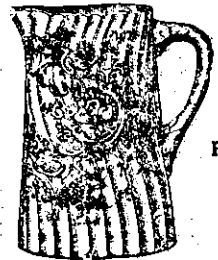
Direct Importers of

China, Glass, and Fancy Wares

Specialty Selected for

PRESENTS.

This is THE SHOP for PRESENTS, Pretty, Useful, Large, or Small. Best value in AUCKLAND.



The SHOP for Presents. PHONE 782.

280, Queen Street

(Opp. Smith & Gaughier).

CHEAPER THAN MEAT.

PLASMON

BETTER THAN MEAT.

All Grocers, Chemists, Stores.

Tourist Season, 1906-7.

Visit Te Aroha

The Health Resort of N.Z.

Drink the famous MINERAL WATERS and get rid of your Rheumatism, Sciatica, Misordered Liver, and any other ailments that you may be suffering from.

Hot Springs Hotel

R. L. SOMERS, PROP.

SEE THAT SPOT

WASH THE SPOT WITH THE LIGHT-OIL SOAP THEN WATCH THE COFFEE AND OTHER BEVERAGES