

G437—Silver-backed Hand Mirror, Newes Design.

Other designs at 25/-, 27/6, 30/- upwards.

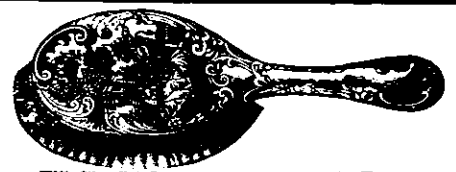
# STEWART DAWSON & CO.,

Jewellers,  
145 and 146 Queen Street, AUCKLAND.

Our variety makes suitable selection easy.

Our Goods are Marked in Plain Figures at Cash Prices. Our Illustrated Booklet is sent Free to all.

Goods posted free to any address.



F790—Silver Hair Brush, 9 1/2 in. long, the fashionable "Watteau" design, 15/6.

Great variety of others at 10/6, 12/6, 25/- upwards.



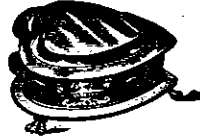
G679—Baby's Silver-mounted Brush and Comb in Velvet-lined Morocco Case, 16/6.



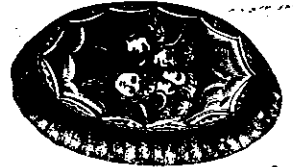
No. G17—Solid Silver and Cut Glass Toilet Bottles, in 3 sizes, 10/6 and 15/6.



G031—Solid Silver and Cut Glass Puff Box, 8 1/2 in. high, 10/6. Others, 11/6, 12/6, 14/6, 16/6 upwards.



No. G406—Heart Shape Gold-lined Silver-plated Trinket Box, 17/6.



G600—Gent's Silver Backed Military Brush "Ang" Chair" design, 22/6. Other designs at 21/-, 23/6, 27/6.



F799—Silver-backed "Watteau" design Clothes and Hat Brushes 7 in. long, 16/6 each.



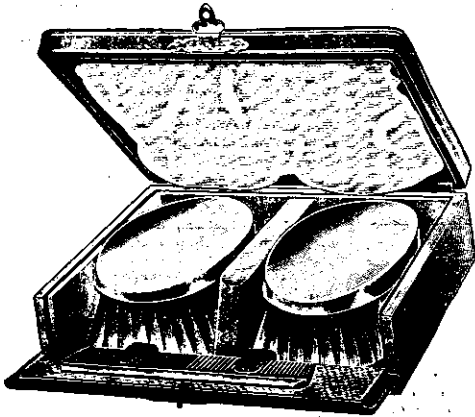
G589—Fine Seal Purse, Massive Silver Mount, Silver Lock, 10/6.



G588—Real Crocodile Skin Purse, with Solid Silver Mounts and Lock, 14/6.



G385—Cut Glass and Solid Silver Jew. Box, Two Diam. 2 1/2 in. long 10/6; 6 1/2 in. long 16/6.



G75X—Case containing 2 Gent.'s Military Brushes, Solid Silver Concave Backs and Comb, £3/10/-.

Other Silver Sets at 45/-, 52/6, and 60/-.

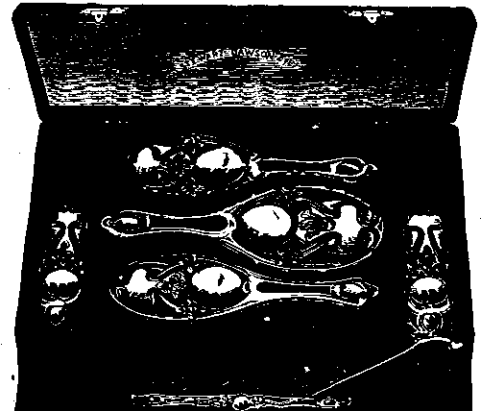


F847—Solid Silver-mounted Comb, 7 1/2 in. long, 8/6. (Great selection of others, 4/6, 5/6, 6/6, 7/6 up to 21/-).



G586—Solid Silver and Best Steel Manicure Set, in Morocco Case, £2/7/6.

Other sets at 21/-, 25/-, 27/6 upwards.



G503—Case containing Beautiful Set of 2 Hair Brushes, Clothes Brush, Hat Brush, Mirror and Comb, all mounted in Solid Silver, £10, 10/-.

Other sets at £6/10/-, £8/10/-, £9/10/-.



Speed Launch "SLIM JIM," 30 feet by 5 feet, 15 h.p. Monarch Engine, speed over 15 miles per hour, designed and built by

## T. M. LANE & SONS,

Ship, Yacht, Launch Builders and Designers.

Designers and Builders of Auxiliary Schooner "Countess of Ranfurly," built for the N.Z. Government, and sister-ship "Samoa," Auxiliary Schooners "Kaco," "Aotea," "Greyhound" and others.

OIL LAUNCHES ON SALE and BUILT TO ORDER. Estimates and Designs on Application.

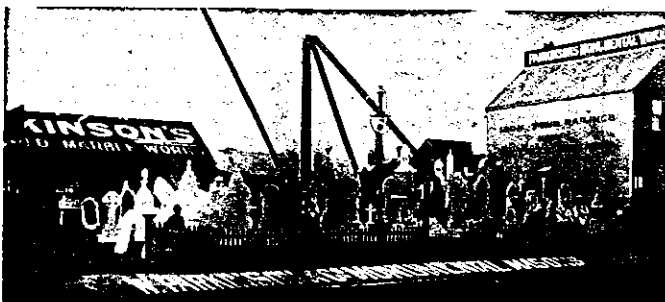
SOLE AGENTS FOR THE  
**MONARCH OIL ENGINE**

From 14 h.p. up to 150 h.p.  
(2 and 4 cycle).

MOTOR LAUNCHES A SPECIALTY.

**KING'S DRIVE, AUCKLAND, and TOTARA NORTH.**

FOR SALE—MOTOR LAUNCH "SLIM JIM," fastest boat for her power and displacement in Australasia, now fitted up as a pleasure launch suitable for cruising. Price £265. Discount to cash purchaser. Apply T. M. LANE & SONS, Designers and Builders, King's Drive, Auckland.



## W. PARKINSON & CO.,

Monumental Sculptors, [TELEPHONE 964.] VICTORIA ST. WEST, AUCKLAND.

Branch Yard, WAIKUNETE STATION. Between Hobson Street and Nelson Street.) Sculptors for the Westland War and Coronation Memorial, N.Z. Battery Commemoration Statue in Albert Park, Reed Memorial in Albert Park, Rotorua War Memorial. The Largest Stock of Marble, Granite and other Memorials in New Zealand. Catalogues on application. Iron Tomb Reliefs, Cemetery Walls, Sarcophagi, Etc. A large stock of Porcelain Wreaths on hand.

LOCATION—Take College Hill car and ask the conductor to put you down at Nelson Street. IT WILL PAY YOU.

ASK FOR

# PEEK, FREAN & CO'S

## "Oyster Wafers"

Dainty oyster-shaped Wafers, filled with deliciously flavoured cream.

PEEK, FREAN & CO., LTD., LONDON, ENGLAND.



### "DENTO-PHOTO CHAIN."

In your judgment and opinion, which three pictures of MISS MARIE STUDBOLME (numbered 1 to 27) show her teeth so as to give her face the most pleasing expression? First prize, value £10, second, value £7. Copy of pictures, conditions, and full particulars may be obtained (FREE) from the chief lady-attendant at—

**MR. HOWEY WALKER'S DENTAL SURGERIES,**

NEAR HIS MAJESTY'S THEATRE.

OPPOSITE YATES', SEEDSMAN.