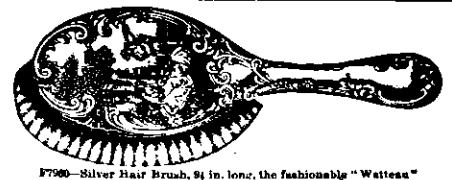
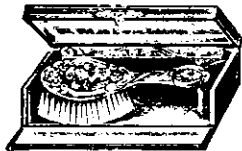


G167—Silver-backed Hand Mirror, Newest Design, 9 in. long, 3 1/2 in. wide.  
Other designs at 25, 27, 28, 31, upwards.

**STEWART DAWSON & CO.,**  
Jewellers,  
146 and 148 Queen Street, AUCKLAND.  
Our variety makes suitable selection easy.  
Our Goods are Marked in Plain Figures at Cash Prices. Our Illustrated Booklet is sent Free to all.  
Goods posted free to any address.



F790—Silver Hair Brush, 9 1/2 in. long, the fashionable "Watteau" design, 15 1/2.  
Great variety of others at 18, 22, 26, 35, upwards.



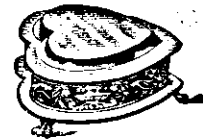
G529—Baby's Silver-mounted Brush and Comb in Velvet-lined Morocco Case, 16 1/2.



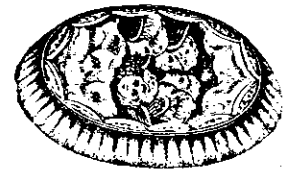
No. G171—Solid Silver and Cut Glass Toilet Bottles, in 2 sizes, 10 1/2 and 13 1/2.



G601—Solid Silver and Cut Glass Puff Box, 3 1/2 in. high, 10 1/2. Others, 11 1/2, 12 1/2, 14 1/2, 16 1/2 upwards.



No. G486—Heart Shape Gold-lined Silver-plated Trinket Box, 17 1/2.



G383—Gent's Silver Backed Military Brush "Angel Choir" design, 22 1/2. Other designs at 21, 22 1/2, 27 1/2.



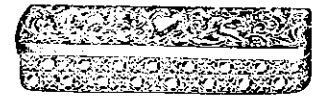
F929—Silver-backed "Watteau" case in Clothes and Hat Brushes 7 in. long, 1 1/2 each.



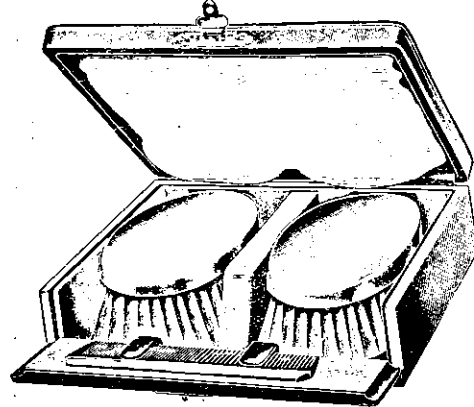
G389—Fine Seal Purse, Massive Silver Mount, Silver Lock, 19 1/2.



G535—Real Crocodile Skin Purse, with Solid Silver Mounts and Lock, 14 1/2.



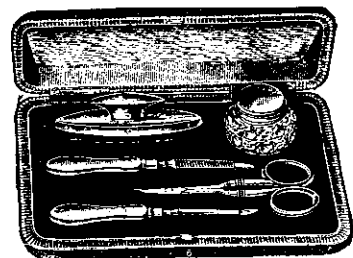
G362—Cat Glass and Solid Silver Jewel Box, Two Sizes, 9 1/2 in. long, 10 1/2, 9 1/2, 10 1/2.



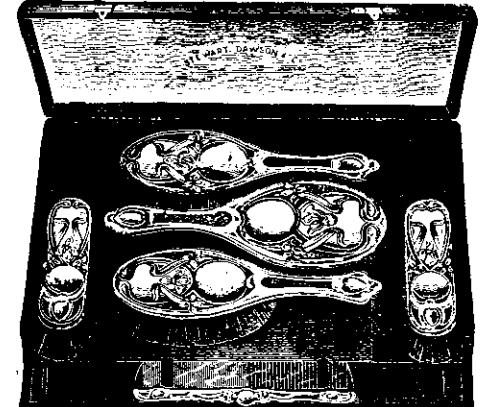
G1306—Case containing 2 Gent's Military Brushes, Solid Silver Concave Backs and Comb, 23 1/2.  
Other Silver Sets at 15, 22 1/2, and 30.



F817—Solid Silver-mounted Comb, 7 1/2 in. long, 8 1/2. Great selection of others, 4 1/2, 5 1/2, 6 1/2, 7 1/2 up to 21 1/2.



G533—Solid Silver and Best Steel Manicure Set, in Morocco Case, 22 1/2. Other sets at 21, 25, 27 1/2 upwards.



G3612—Case containing Beautiful Set of 2 Hair Brushes, Clothes Brush, Hat Brush, Mirror and Comb, all mounted in Solid Silver, 210 1/2. Other sets at 20 1/2, 24 1/2, 28 1/2.



Speed Launch "SLIM JIM," 30' x 6' 5" x 5 feet, 15 h.p. Monarch Engine, speed over 15 miles per hour, designed and built by

**T. M. LANE & SONS,**  
Ship, Yacht, Launch Builders and Designers.

Designers and Builders of Auxiliary Schooner "Countess of Stanbury," built for the N.Z. Government, and "Sistership," "Santon," Auxiliary Schooners "Karo," "Aotea," "Greyhound" and others.

SOLE AGENTS FOR THE  
**MONARCH OIL ENGINE**  
From 1 1/2 h.p. up to 150 h.p. (2 and 4 cycle).  
MOTOR LAUNCHES A SPECIALTY.

**KING'S DRIVE, AUCKLAND, and TOTARA NORTH.**

FOR SALE—MOTOR LAUNCH "SLIM JIM," fastest boat for her power and displacement in Australasia, now fitted up as a pleasure launch suitable for cruising. Price £235. Discount to cash purchaser. Apply T. M. LANE & SONS, Designers and Builders, King's Drive, Auckland.

In weather extremes of heat and cold, nothing is so sustaining as

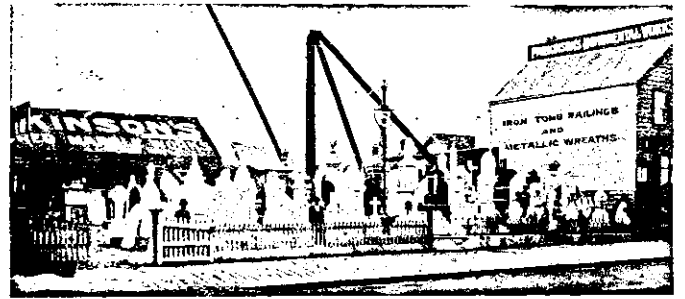
**Cadbury's MILK CHOCOLATE**

A Concentrated Sweetmeat-Food of the highest order. A product of the beautiful Garden City of Bourneville, founded by the Manufacturers of

**Cadbury's COCOA,**

of which *The Lancet* says it is "The Standard of Highest Purity," which Health calls it "A Perfect Food."

"SNOWED UP"  
A not infrequent winter experience in some parts of the "Old Country"



**W. PARKINSON & CO.,** [TELEPHONE 954.]  
Monumental Sculptors,  
Branch Yard, WAIKUMETE STATION.  
Victoria St. West, AUCKLAND.  
(Between Hobson Street and Nelson Street.)  
Sculpture for the Westland War and Coronation Memorial, N.Z. Battery Commemorative Statue in Albert Park, Reef Memorial in Albert Park, Rotomanga War Memorial.  
The Largest Stock of Marble, Granite and other Materials in New Zealand. Catalogues on application. Iron Tomb Railings, Cemetery Walls, Balustrades, Etc. A large stock of Portland Wreaths on hand.

LOCATION—Take College Hill car and ask the conductor to put you down at Nelson Street. IT WILL PAY YOU.

ASK FOR

**PEEK, FREAN & CO'S**

**"Oyster Wafers"**

Dainty oyster-shaped Wafers, filled with deliciously flavoured cream.

**PEEK, FREAN & CO., LTD., LONDON, ENGLAND.**