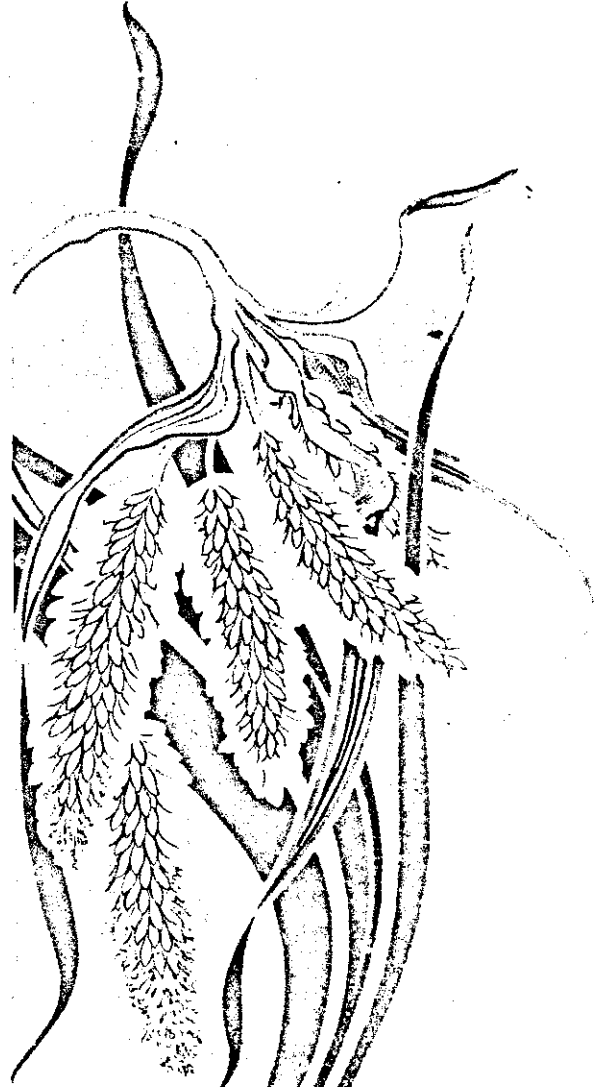


NEW ZEALAND GRAPHIC



CHRISTMAS NUMBER

1905

BEING
A COLONIAL
INSTITUTION

ALL PROFITS ARE
RETAINED IN THE COLONY.

MODERATE
RATES.

LIBERAL
SETTLEMENTS.

❖ — THE — ❖

SOUTH BRITISH

FIRE and MARINE

Insurance
Company

of New Zealand.



1877
1878
1879



1880
1881
1882

Directors.

R. A. CARR, Esq.
JNO. BATGER, Esq.
JNO. EDSON, Esq.
W. C. McDOWELL, Esq.
J. H. UPTON, Esq.
THOS. PEACOCK, Esq.
C. C. McMILLAN, Esq.

CAPITAL

£1,900,000

PAID-UP CAPITAL AND ACCUMULATED
FUNDS EXCEED

£450,000

JAMES KIRKER, General Manager.

1905

NEW ZEALAND
GRAPHIC



— KIA ORA, PAKĒHA. —



Fishermen Inside the Reef, Morea.



A Mountain Stream, Morea.



MOUNTAINOUS MOREA

"BY REEF & PALM"

TAHITI RIVER

IN SUNNY SEAS. SCENES IN THE SOCIETY ISLANDS



Parinui Kainga.



A Beautiful Reach.

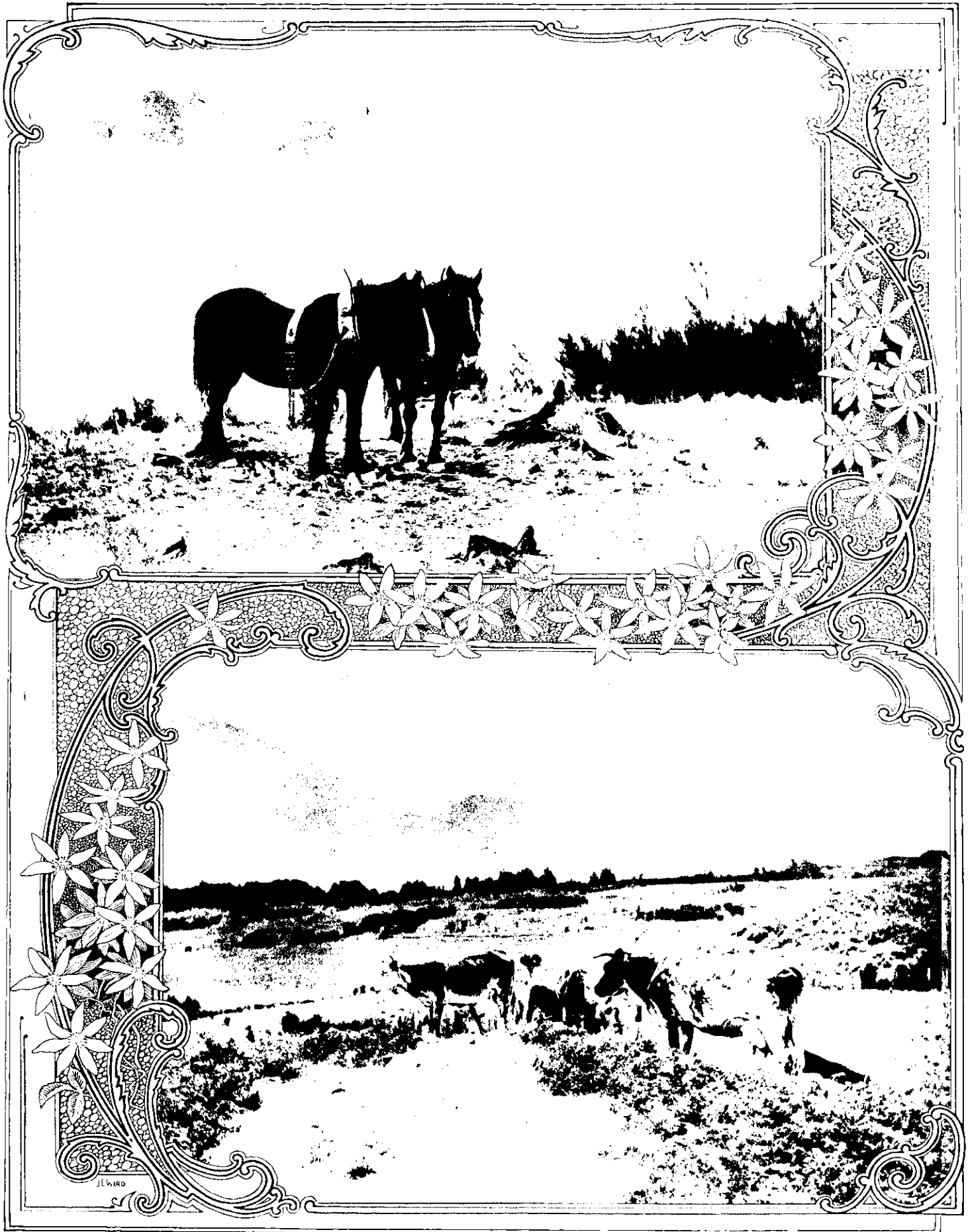


Noontide.



The Famous Paparoa Rapid.

LOVELY SCENERY ON THE UPPER WANGANUI.







A Mountain Stream.



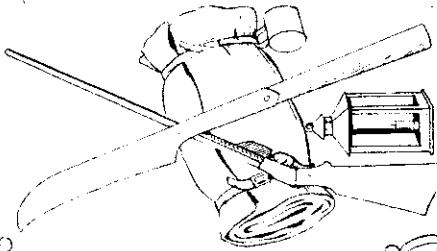
Making a Road in the Heart of the Bush.



In Light Airs.

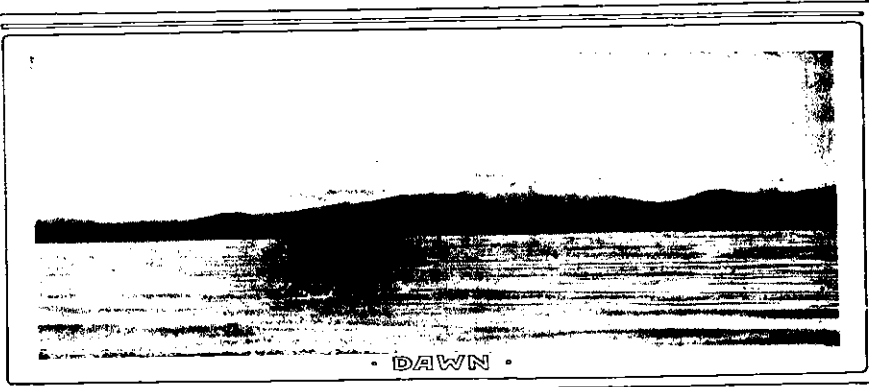


Crossing a Creek.



Leaving Camp in the Morning.

THE MAKING OF A COLONY.—ROAD SURVEYORS, THE AVANT COURIERS OF CIVILIZATION.



• DAWN •



• ROTURUTUKU BAY •



• CARVED HOUSE • OTUKU •



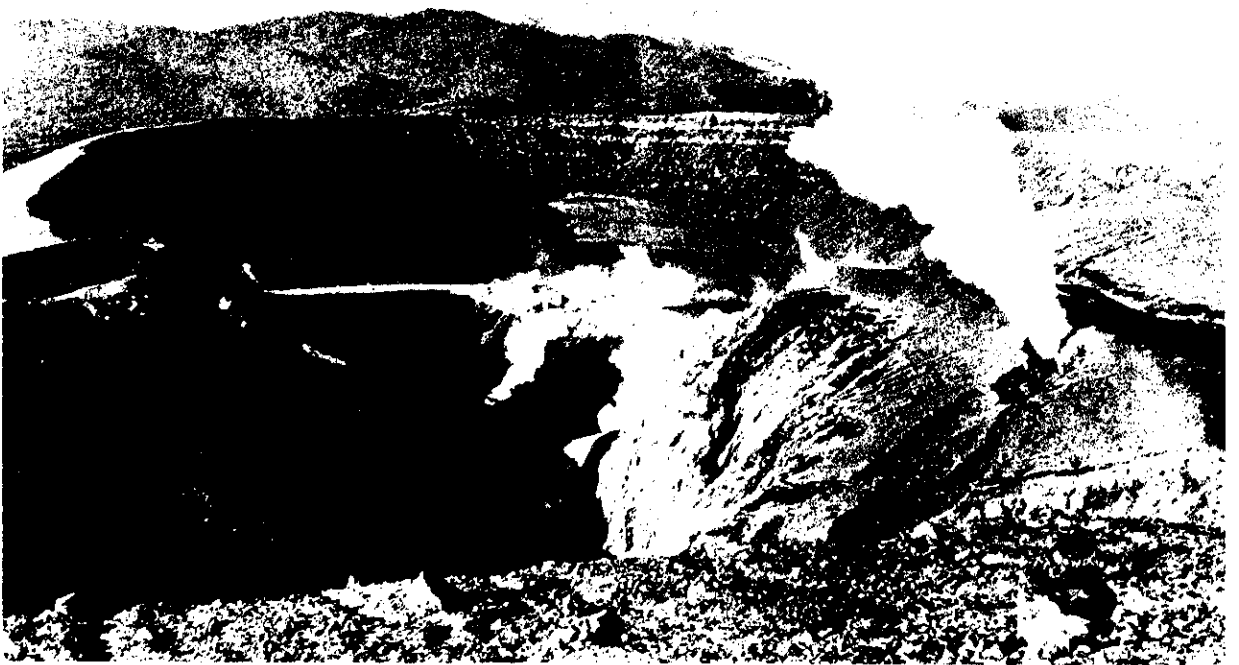
• WHANGANUI FALLS •



• SPA DINING ROOM •



CROW'S NEST GEYSER TAUPO



CRATER OF TE MARIE · MT TONGARIRO.



Hullo! he's asleep.

Phew! he did get up suddenly.

I'll get on and have a ride.

He's just thinking now how to get rid of me.

No, you can't do it that way.

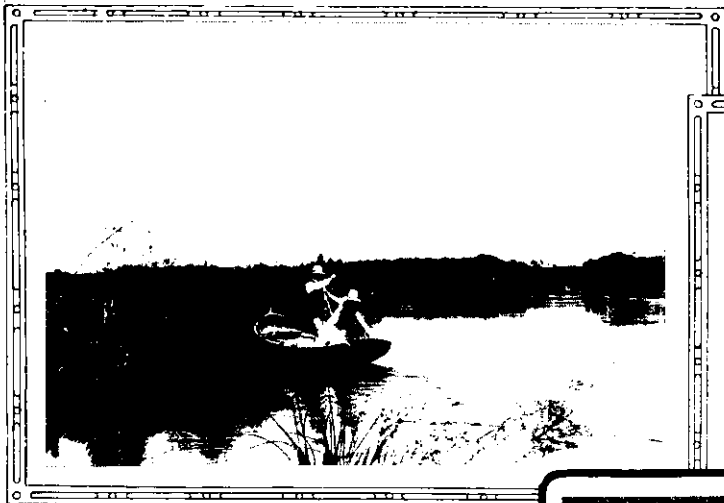
and go to sleep.

But this isn't comfortable for me.

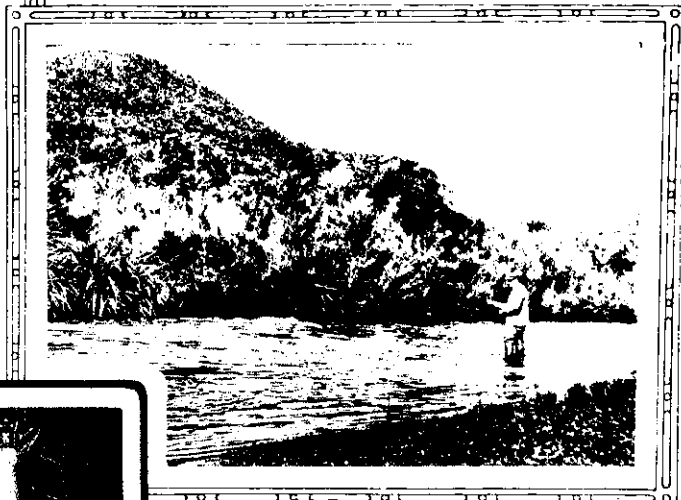
I don't like this, I'll get off

Now that's all right.

For I'm tired too.



LANDING A FISH IN THE
OHOU CHANNEL



HIS EXCELLENCY THE
GOVERNOR OF N.Z.
FISHING THE WAIMIHA RIVER,
KING COUNTRY.



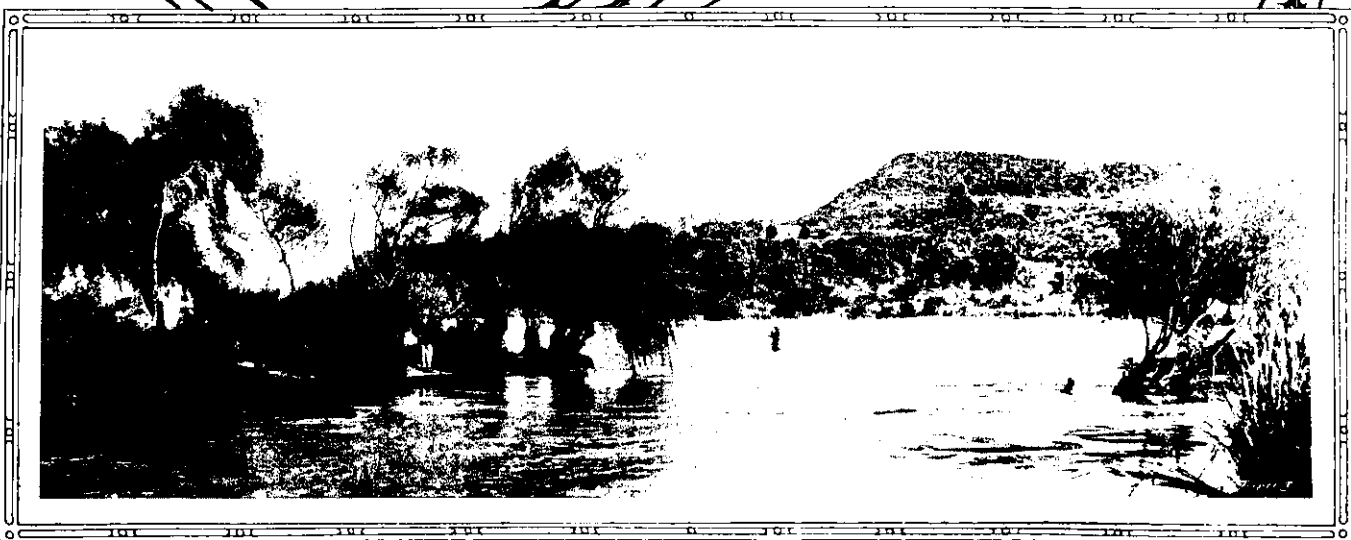
A TEN-FOUND
RAINBOW TROUT.



PITCHING A FISHING CAMP
ON LAKE ROTOITI.



FISHING AT THE MOUTH OF THE AWAHOU.



AT THE MOUTH OF THE OHOU RIVER, LAKE ROTORUA
RAINBOW TROUT FISHING, ROTORUA DISTRICT.

By MOUNTAIN, LAKE, and GLACIER.

Impressions of
the New Zealand Alps.

By Thomas Pringle,
Wellington.



FROM Fairlie onwards the monotonous coach journey over khaki-coloured, yeldt-like plains and undulating hills, could only be redeemed from abject weariness by some Hugh Miller. We seem to be getting into the heart of things, about to witness the marvels of creation.

These rich Canterbury plains just left, glowing in golden harvest tints, what are they but decomposed shingle tali on the greatest scale? These undulating hills are no more than ancient lateral moraines: these plains but ancient lake beds filled—as Lake Pukaki is being filled to-day—with glacier-worn deposits: those huge ice-borne erratics breaking the tussocky expanse with spots of blackness our geologist recognises as from Cook, Malte Brun, Leibig, where not! till later on he draws our wondering eyes to the self-same processes actively operating.

Wearily day draws to tiring evening. Loquacious passengers have long since succumbed to the dreary sameness of tussock downs; conversational amenities long since reduced to monosyllabic brevities. The silence suddenly broken by a staccato chorus, "Magnificent!" Far below, the opalescent gleam of Lake Pukaki, indescribably wonderful in its turquoise shading to pearly cream, peacock to delicate greeny white, Aorangi, Tasman, Haidinger, Sefton, just tipped with day's departing rays, the whole glorious range duplicated in the silent waters. Magnificent! What a feeble epithet for such a vision of the Delectable Mountains!

With sunset comes an ice-cold breeze, sponging out with gentle ripples the fairy-like reflections. Mysterious clouds from nowhere fill up each darkening valley; unreal mountain tips left floating in delicate ether, slowly disappearing in a *robe-de-nuit* as the mists rise in the chilly air.

Next morning we round Lake Pukaki, robbed now of all its indescribable flashings of opal and turquoise, lying ominously quiet, steely-cold, repulantly menacing: our Delectable Mountains lost in swirling clouds, ominously black; the Tasman Valley blocked apparently by the rugged cliffs of Sefton, closing in like a gloomy canyon between Cook and Sealey Ranges; thunder booming, avalanches reverberating, clouds sweeping in a wild witches' orgy, demented, distracted, pitilessly lashing us with stinging hail—a valley of deepest gloom, forbidding in the extreme. We understand now how the brilliant but venturesome orator of old Maoridom would thrill the assembled hapi with tales of roaring tanihua guarding these regions of perpetual ice and snow.

Wonderful though these first contrasting visions from Pukaki and Tasman Valley were, I am fain to confess that the most impressive approaches to our Southern Alps are from the west, either by way of Fox Glacier, Francis Joseph Glacier, or Copland Valley. The two former are available only to experienced climbers, the latter to anyone fairly endowed with physical endurance. Nothing quite so fine is to be found on the east as the Karangarua River, with its splendid gorges; or the Copland River, with its extraordinary boulders and more wonderful hot springs. Nothing nearly so impressive as the amphitheatre of stupendous cliffs on the western faces of Sefton or La Perouse. Nothing nearly so interesting as the sharp transition from the exotic luxuriance of sea



Mts. Malte Brun and Chudleigh.

Medial Moraine of Tasman Glacier in foreground.

level, through matted bush—the densest I know of in New Zealand—dense scrub. Alpine flora, up to the region of mosses, lichens, and absolute bareness.

Guide Clark is fortunate in possessing an invaluable quality—he instinctively inspires confidence. As one of half-a-dozen who have conquered Mount Cook, you naturally regard him with jealous admiration, possibly envy. But I confess my child-like faith was somewhat strained as I watched him turning my already heavy boots into veritable ledge-anchors, studding them with pound after pound of heavy nails. But when you have spent a few days in preliminary exercises—skipping, for example, from rock to rock of the extremely rough surface moraine of the Mueller Glacier—faith returns in the author of your ironclad understandings. Admiration, too, though I never got quite so far as the young lady tourist: "Clark, you're a perfect deer!" swiftly altered to, "I mean you're a regular goat!" blushing confusion and further emendations being lost in general laughter.

Following the bottom of a V-shaped gorge formed by the Mount Cook Range and the lateral moraine of the Tasman Glacier, the Ball Hut track is scarcely interesting. Sometimes scrambling along the ice-deposited moraine, stretching for miles like a hastily-deposited pile of Brobdignagian building material; sometimes down the avalanche faces, where fitful missiles lend a spice of danger to the journey. Louder reports than usual, thousands of feet overhead, are followed by a brisk cannonade, great boulders spin down the steep incline, invisibly swift except for a second as they touch earth, raise clouds of dust, bound another hundred yards, more dust, then the final crash. The air is filled with flying splinters like the bursting of a bomb, and another chain or two of track is obliterated—exciting work, fortunately not usual.

Daylight, laden with chill blasts from the glacier, finds us swag-burdened *en route* for Malte Brun Hut. Warily negotiating the maze of boulder-strewn ice waves, timidly balancing along sharp glacier crests, skirting yawning crevasses, fearsome and apparently fathomless, our progress materially hindered by my never-satisfied delight in the deep moulins of palest blue-green, deepening almost imperceptibly to the darkest indigo, finally black, the delicacy and richness of their gradations hopelessly impossible of transfer to the artist's canvas, still less to the photographer's dry plate.

Two miles of sudatory struggle brings us abreast the great Hochstetter Ice Fall, still swathed in mist clouds, lingeringly clinging to the fitfully-seen slopes of rugged Mount Cook, vainly resisting Sol's dispersive attacks, gradually rising higher and higher, curtain-like, till the following eye has the whole magnificent four thousand feet of congealed cataract, a perfect Niagara of enormous seracs, the further four thousand feet of highest Aorangi just flecked here and there by floating rags of pink-tinged clonnetts. Nothing in the whole Alps is

more sublime; nothing within comparatively easy reach of the average tourist so indescribably magnificent, as the first sight of this colossal ice fall. Closer acquaintance adds admiration to wonder. Magnitude begins to be dimly apprehended—the seeming few hundred yards grows to a mile wide of Arctic valleys, with here and there glittering ice caves fretted into thousands of flashing facets.

Imagination is stimulated amidst its fantastic weather-worn sculptures; fear also by its ponderous avalanches, quaint slabs, grotesque pyramids, symmetrical cubes, immense seracs, pyriform poised like enormous cryptographic creations, spires and steeples large enough for the dome of St. Paul's or the spires of the Dom at Koln, incipient architecture worthy of Cheops.

Pressure from above, sunrays from below, constantly working marvels with its melting plasticity. Whilst you gaze and wonder a Milan cathedral falls to ruin, the thunderous roar rattling and reverberating from cliff to cliff, its place taken by a newly-created Taj-Mahal gleaming and glistening palest green, crowned with marble white—incessant destruction, tireless rebuilding.

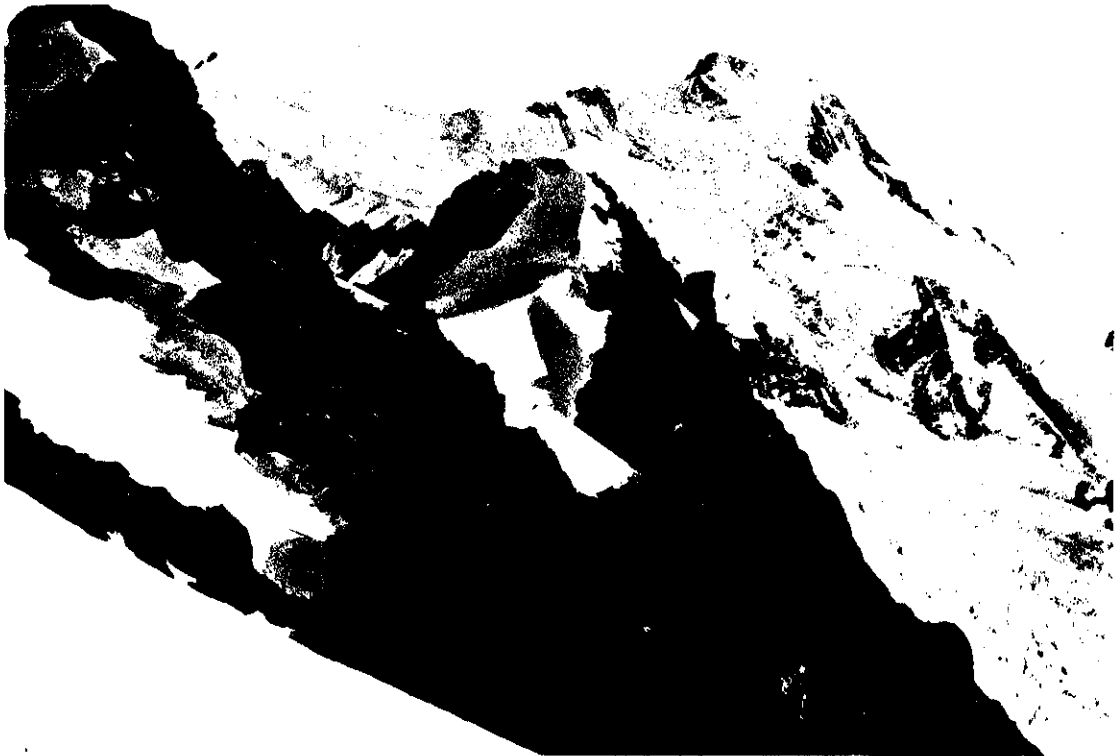
What an interminable twelve miles it seemed from hut to hut! What a wearisome heading of crevasses, circuitous circumvention of ice cliffs, diffident adventure across problematically safe snow bridges, hopeless mazes amongst tumbled ice-falls! Oh, that hut! Apparently so near, yet ever seemingly receding in spite of our wearied struggles. Reached in the afterglow of a Turneresque sunset, strenuous struggle is forgotten in the marvellous prospect. Immediately behind, the peak of Malte Brun; to the right, leonine Mount Darwin and the perfect dome of Hochstetter; unscathed Elie de Beaumont, the impossible cone of Mount Stuart, rugged De la Beche and the Minarets directly opposite; then Haast, Haidinger, Tasman and Silberhorn. Finally the eye rests lingeringly on the dominating vastness of Aorangi, its highest points flushing rosily with a life-like glow, too soon, alas! departing. With nightfall the blushing siren changes Niobe-like. Her peaks and cliffs become featurelessly forbidding in the gathering gloom, coldly emotionless, stolidly sentinel.

Amidst these vast silences of night, how absurdly, oppressively insignificant one feels: how overwhelmed with a sense of littleness, unimportance, impotence. How near at times Charon seems! One false step, a moment's hesitancy, a sweeping avalanche, the solid similitude of a yawning crevasse, its horrid chasm lightly covered with smiling snow, the seeming solidity of a cornice, all *avant couriers* of the son of Erebus and Nox! To the strenuous all sounding a constant challenge, to the timorous a constant menace.

The dyspeptic insomniac eats and sleeps in these bracing altitudes with unwonted heartiness. The guide's pre-dawn call sounds cruelly dutiful, but slightly modified by the graceful aroma of steaming



MT COOK and MALTE BRUN HUT.



MT HADINGER from GLACIER DOME.



Looking up Great Tasman Glacier from Haast Ridge to Hochstetter Dome (9,258 feet), Mt. Darwin (9,715 feet), Malte Brun (10,421 feet)

Mocha and the cheerful clatter of preparations for breakfast. Outside, the air has an icy tang, cuttingly sharp, searchingly biting. Reaction soon comes with upward progress, and numbed extremities glow with almost uncomfortable warmth.

It is our maiden effort at climbing. With meek obedience Clark's footsteps are implicitly followed. Doubt intrudes, fear, almost funk. Then a saving glimmer of humour. The whole thing is a huge joke! We are never expected to crawl up that perpendicular rock face! We are, though, and do. With quiet assurance our instructions are, "Keep cool," "Take it steadily," "Make sure of every handgrip and toe rest," and, to our own astonishment, we are soon spread-eagled half-way up. Little later the difficulty is surmounted, only to be encountered half-a-dozen times, till finally we reach the outermost point of a projecting buttress, panting, perspiring. Amongst other wishes, oh, for a loan of Sindbad's Roc or the Enchanted horse!

Only 9,000 feet above sea level, and right behind us the last 1,200 feet of Malte Brun, apparently vertical. What a glorious panorama of glacier, ice-crowned peaks, untrodden snow-fields! Range after range, north, south, west. The great Tasman Glacier far below visible for almost its complete eighteen miles. What a magnificent, stately sweep it presents, its graceful curves the very poetry of form! From this leight baffling mazes of crevasse resolve themselves into regular semi-circular ploughings. Chaotic ice-falls, yesterday so tiresome, now assume due proportion as mere ripples in the gigantic ice-stream, Darwin, Prinz Rudolf, Haast, Hochstetter, Ball and countless other glaciers each swelling the great frozen cataract, the largest tributaries temporarily deflecting the main stream with curious riplings.

In this crystalline atmosphere distance is most deceptive, few things more difficult to attain than a due sense of proportion. That point just across the Mueller Glacier, temptingly inviting an after-dinner saunter, takes at least a couple of hours' hard walking. That silver thread far below, glistening amongst the dull moraine debris, is an impassable river. Those tinsel threads

gleaming down the ranges compel careful negotiation on closer acquaintance, as they dash impetuously down their boulder-strewn courses. Joyously leaping and dashing in their new-born strength, wildly delighting in their release from glacier prison, how little they dream of the gloomy disappearance so close at hand! With what sullen murmurings they disappear into dark ice tunnels beneath the main glacier, reappearing miles below at the terminal face with geyser-like spoutings, where their real race seaward begins.

How difficult to realise those rugged, cornice-tipped peaks of Sefton are a mile and a-half vertically above the Hermitage! That Aorangi towers more than two miles above us! But when you have spent laborious hours climbing Mount Ollivier to view the first, or Ball Pass to view the latter, and still find each the better part of a mile overhead, some faint idea of their magnitude begins to be appreciated. So that, whilst distance is needed to correctly gauge relative heights, and Mount Cook only stands pre-emiuent—like Joseph's sheaf—when viewed from fifty miles away, altitude and propinquity are equally necessary to a due understanding of magnitude and detail. Mountains must be viewed from mountains—from below, their perspective is distorted and bulk dwarfed.

Climbing the Ball Pass in the early rawness of an autumn morning, great seas of rolling clouds beneath, sunrise just tinting opening masses beyond the ranges, was a delightful experience. Mountain tops seemed to float like islands on a sea of down, the soft draperies beneath opening and closing like some garment, its wearer doubtfully undetermined whether to discard or not. Indeed, I doubt if anything gave greater pleasure than the wonderful phenomena of cloud-form and colour amongst the mountains. Never by any chance those great banks of billowy cumulus flocks so common round the coasts, restfully floating like browsing flocks; but broken up into a thousand strange forms, now like the feathery wings of Ariel, or as if some great magician had distorted and magnified millions of times snow crystal forms; again, as if their passage across the rugged peaks had shredded them into filaments light as thistle-down. Now gloriously transparent against a sky of turquoise; later, spun magically into Oriental riot of gorgeous colouring—a Penelope work-basket of rainbow hues.

This startling changefulness never lost its glamour; the eye never wearied of their swift transitions. As we wait and watch, from the west steal invisible moisture-laden currents, condensing on the cold mountain tops, till each peak waves a filmy banner, advancing, receding, disappearing, then re-forming



Mount Cook Range, from Malte Brun.



View from the Malte Brun Hut, looking across Tasman Glacier to Mts. Elie de Beaumont, Green and Coronet Peaks.



Sunset on the Great Tasman Glacier, from Malte Brun Hut.

like returning messengers, scouts of the great cohort marshalling behind, reconnoitring down valleys, spying across glaciers, investigating aretes, couloirs, cols, visibly growing in number, density; hovering hither and thither with tumultuous agitation; finally, in one great enveloping movement, blotting out peaks and glaciers. Sometimes lying in great dappled masses, motionless as shady forest leaves at stillest noon, or sweeping up from south, formless, clammy, fearsome; now pouring hot haste through the passes, whistling and whining; often, as through Fitzgerald's Pass, streaming hastily, only to be caught by stronger cross-currents from St. David's Dome and Baker's Saddle, stretching attenuated tentacles in a vain endeavour to reach Aorangi; finally beaten back along the Moorehouse Range to mass in one long, champing legion, restlessly pawing, or like a great foamy breaker perpetually returning upon itself.

These are but an inadequate few of the many aspects of Alpine cloud, coming as Mondamin came to Hiawatha:—

"From the empty air appearing,
Into empty air returning
Taking shape when earth it touches,
But invisible to all men
In its coming and its going."

Descending the Tasman Glacier in the dim hour preceding dawn, one is impressed with the incalculable force its silently moving mass must exert. To me, this eighteen miles by two, with a depth of anything from 500 to 1,000 feet, seemed the most prodigious engine of beneficent destruction imaginable, quietly resolving into their constituent elements the cast-off debris of the mountains, and on the largest scale fulfilling that pessimistic note, "That He who wrought me into shape, should stamp me back to common earth again!"

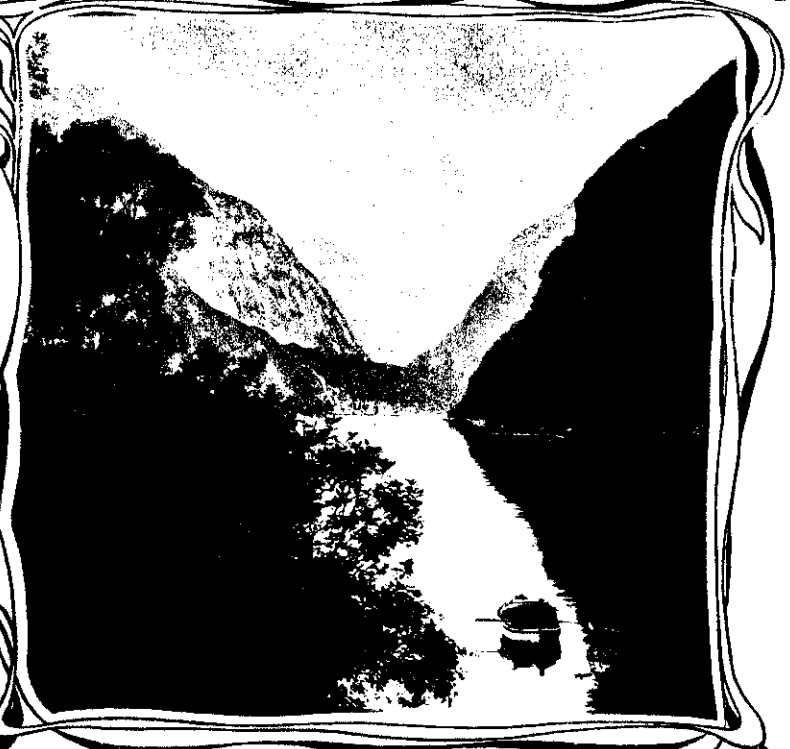
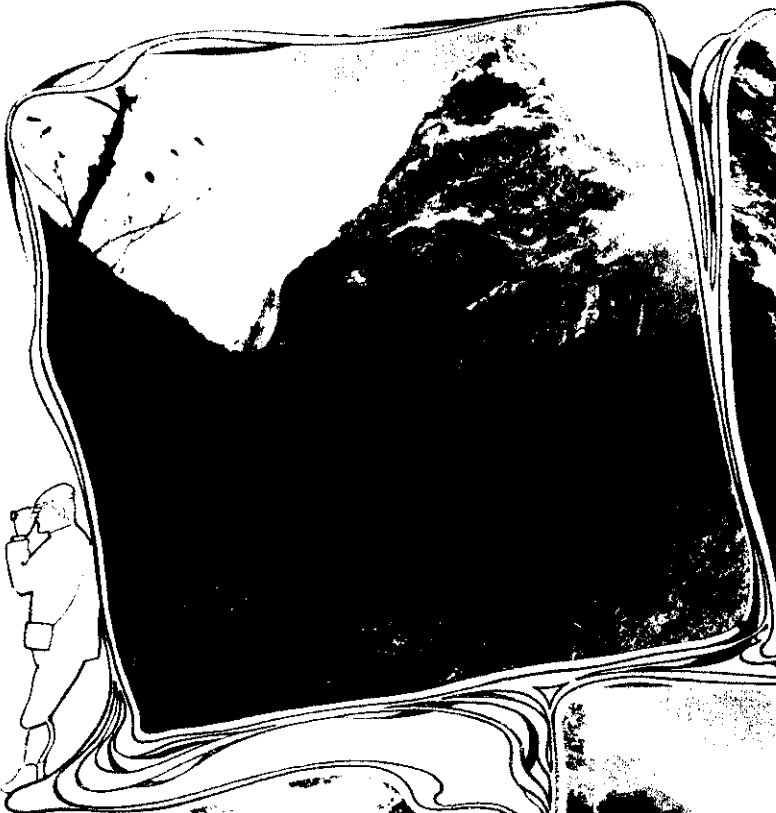
Into the silent darkness anon there come rosy flushes on the highest peaks—harbinger of dawn, renaissance of after-glow. Avalanches sound the reveille of another day, with deep basso profundo saluting sunrise. Had Mendelssohn been there, he would have used them as majestic opening chords of a Tasman Symphony. Thin ice breaking all around with a musical snap—staccato harmonics. Tiny runnels begin journeying with a fluty clearness, rippling cadenzas of mellow sweetness. New crevasses burst with sharp report, as clash of cymbals in a pianissimo passage. Up each moulin come querulous, reedy notes, very legato. Beneath all a deep diapason sustaining, harmonising the collective murmurings of gathering waters.

Seen in mass, glacier ice invokes surprise or wonder. At times so blackened with sand or covered with moraine as to excite scepticism. Once or twice in my limited experience involuntary breaks through fragile snow-bridges have revealed most marvellous valleys of jewels, fairy ice palaces. Waitomo stalactites and stalagmites done in purest crystal, flashing with diamond brightness in their high lights, unutterable depths of amethyst in their shadows.

The fascination of climbing—either as climbing photographer or photographic climber—I am quite unable to explain. I am content that it is so. Not only content, but looking forward hopefully to future opportunities. Those who are content to follow the comparatively easy route up the Tasman Glacier, for example, are rewarded with wonderful Alpine scenery; but how much they miss who forego the ascent to the lower slopes of Mount Chudleigh, from whence the Mount Cook group—Aorangi, Silberhorn, Tasman, Haast, Haidinger—seem like a mighty girdle, Hochstetter Falls a jewelled clasp, Haast Glacier a gem-studded buckle.



AN EARLY MORNING BATH, WHAKAREWAREWA.



Tourist Dept., photo.

BEAUTIFUL GLIMPSES IN AND ABOUT MILFORD SOUND.

Mount Balloon from the Milford Track.

The Head of Lake Te Anau.

Looking up Milford from Windbound Point.

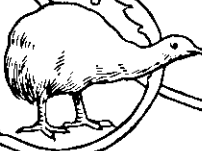
Mitre Peak and the Lion.



THE HEAD OF LAKE WAKATIPU.



SUNRISE ON LAKE WAKATIPU.





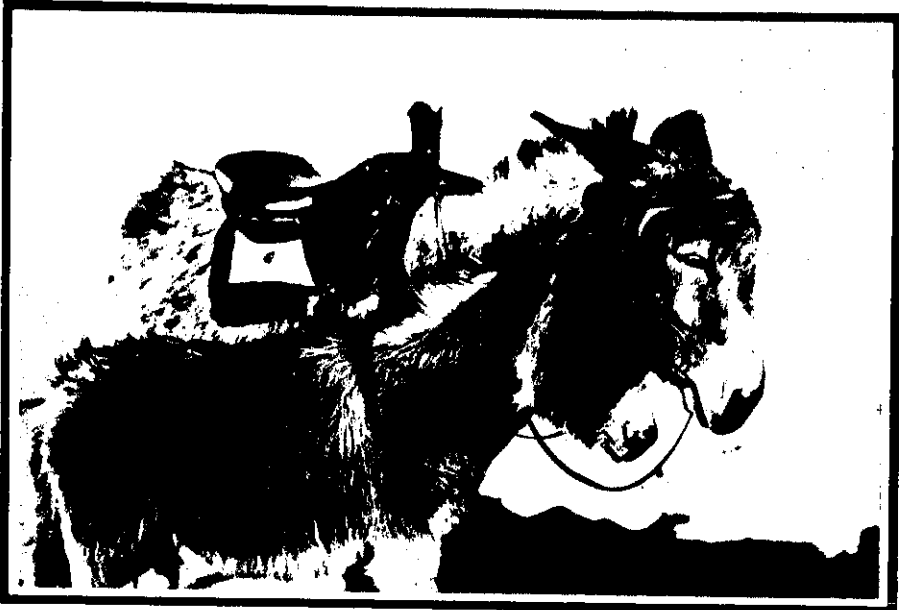
THE BELLE OF THE KAINGA.



BEAUTIES OF THE MAORILAND BUSH.

No. 1.—A Fine Specimen of the Toll (*Cordyline indivisa*)
Tourist Dept., photo.

No. 2.—Avenue of New Zealand's Graceful Tree Fern.
Northwood Bros., photo.



Mother and Daughter—Sumner Beach.



All Their Troubles Before Them.



"Darby."

"Joan."

A Pet Lamb on a Wairarapa Station.



A Hawke's Bay Station Pet.



A Christmas Hamper.

SOME PETS OF YOUNG NEW ZEALANDERS.



STUDIES FROM LIFE AMONGST NEW ZEALAND BIRDS AND REPTILES.

G. N. Budille, photo

1. Baby Gannets.

2. Shags at the Great Barrier.

3. Nutton Bird, Kermader Islands.

4. Kea, or Sheep-Ling Parrot.

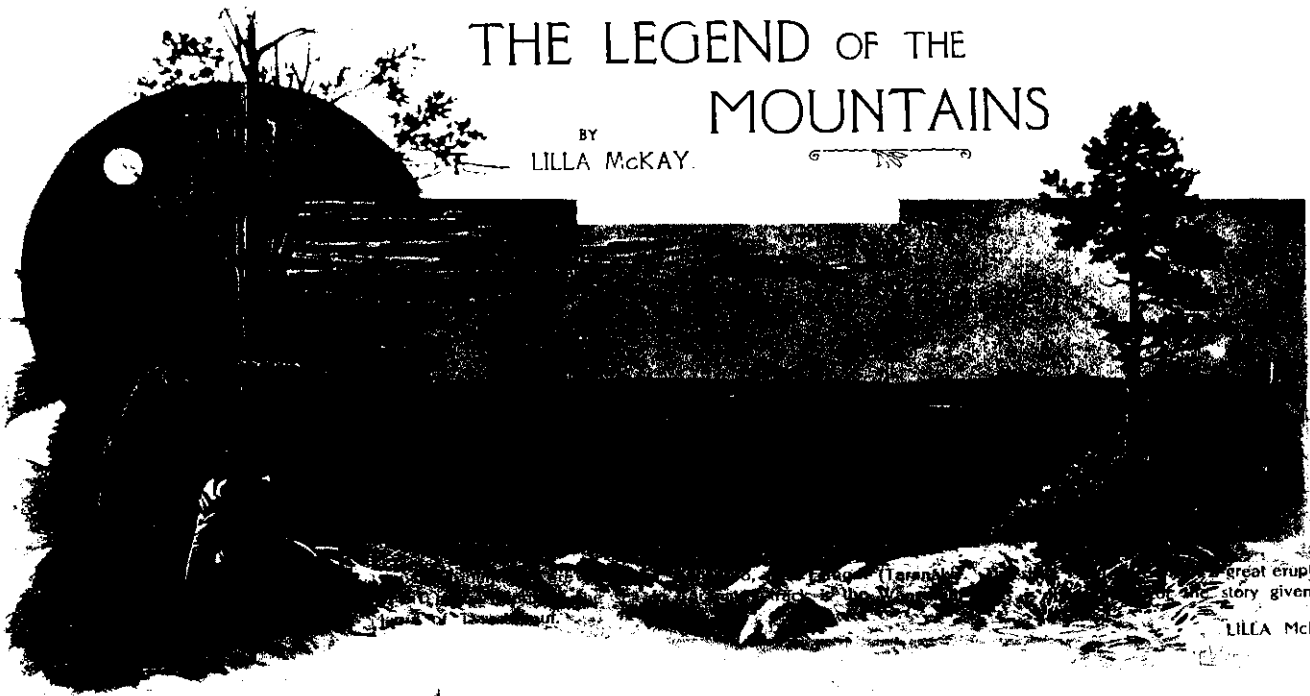
5. Young Shag Near Nest.

6. Tualara Lizard, from Little Barrier Sanctuary.

7. A Colony of Shags.

THE LEGEND OF THE MOUNTAINS

BY
LILLA MCKAY.



great eruption, and
story given by the

LILLA MCKAY.

This is the story told to me,
Under a star-bright sky,
The dusky curtains of night drew down,
Lights glimmered faint in the distant town,
The dark river unmarked by

Out from the whare's shade we came,
Into the dim-lit land,
Ropata, chieftain, bent and grey,
Pointing with trembling hand away,
Whither the mountains stand.



Hear ye the tale, O pakehu,
The legend my fathers told,
Long, long ago was it told to me,
Of Ruapehu, the fair to see,
Beloved of the brothers bold.

Giants were the brothers and chieftains twain,
Noble and great were they,
Justly and well they ruled the land,
Never a foe man dared to stand
Where they had marked their way.

And Ruapehu, the beautiful,
Was Taranaki's wife,
Taranaki, the man of war!
Mighty in days that are no more,
Foremost in every strife.

Strong Tongariro, the hunter bold,
Swift through the woods he trod,
Over the plains the mica he chased,
Guided his footsteps as he raced,
Tane, the forest god.

In the pale East each morn arose,
Great Ra, the sun-god bright,
Flinging the sunlight over the earth,
Waking all things to a new day's birth,
Setting afar the night.

On Ruapehu his first beams fell,
And upward she glanced, and smiled,
Then red was the East with colours gay,
And the sun-god, Ra, sped on his way,
By her loveliness beguiled.

But did Ruapehu her face avert,
And the sun-god, Ra, in vain
Looked for her smile from the gates of dawn,
There never was brightness seen that morn,
But only the mist and rain.

Long were the years they lived in peace,
Nothing they spake of strife,
But Tongariro, the hunter bold,
Long he loved with a love untold,
Great Taranaki's wife.



Up from the South the sun rose,
When the stars were at their night,
Far to the North he swiftly flew,
Listening great Taranaki knew
Of Ruapehu's flight.

Then, in the wartime, to the South
Great Taranaki sped;
And Tongariro, with stars above,
To fair Ruapehu told his love,
And together North they fled.

Called he the tribes together, then
Spake he to friends and foes,
"Far to the North my brother flies,
Soon by this spear he surely dies,
Maker of untold woes."

Then forth great Taranaki went,
Travelled he night and day,
Tawhiri, god of the mournful breeze,
Tangaroa, god of the rolling seas,
Sped him upon his way.

Many a mountain high he crossed,
Many a river deep;
Off through the forests dark he sped,
Down by the reedy lake he slept,
Under the hillside steep.



Weary he rested on the plain,
Lingering for the dawn;
Crimsoning clouds in the East he spied,
"Ruapehu is near," he cried,
"Fairest of creatures born."

Then Tongariro stepped from the hills,
Downward unto the plain,
"Ruapehu is here," he said,
"Together we fight till one be dead,
The living one shall her gain."

All night the lightning flashed, all day
With thunders loud they fought;
Ruapehu, in her hiding-place,
Shuddered, and moaned, and hid her face,
For the mischief she had wrought.

All the great gods of the sea and land,
Fast to the battle came,
Long it was neither night nor day,
Great mists of blackness hid the fray,
Pierced by the lightning's flame.



Then to the ocean the Eniwhas
Seaward the moas ran,
Shattered was every tree that grew,
Every bird from the forests flew,
Stricken was every man.



Still on the black-hued plain they fought,
Till Tongariro fell,
Stricken by Taranaki's spear;
Sternly his brother bade him hear
That which he had to tell.

"Wounded you lie before me now,
You who have rent my heart,
Two lonely mountains in the land,
Ruapehu and you shall stand,
Never again to part.

"Crowned with a chilling crown of white,
Standing for all to see;
Burning, unquenchable fires within—
Thus shall you show your love a sin,
This shall your future be."

Then from the earth two mountains rose,
Burning, stood side by side,
And Taranaki, the giant chief,
Strode from the place in lonely grief,
Out to the ocean wide.

There on the highest cliffs he stood,
And wept he, all forlorn,
Over the hills the sun-god came,
Calling on Ruapehu's name,
Bidding her greet the morn.

When he the burning mountains saw,
'Mid blackened plain and wood,
On Taranaki his anger turned,
Into a mount that raged and burned
He changed him where he stood.

And slowly now in the West
Downward the water flows,
Sadly they sing of the
Always a memory
Of Taranaki.

In the West he stands alone,
This tale all men may know—
Ruapehu, his lovely wife,
Tongariro, slain in the strife,
Many a year ago.



Still do they hold their fires within,
Still do the mountains stand;
And Ropata, chieftain bent and grey,
To the dim mountains far away,
Pointed with shaking hand.

HILIA MCKAY.

Manukau Road, Parnell, Auckland.



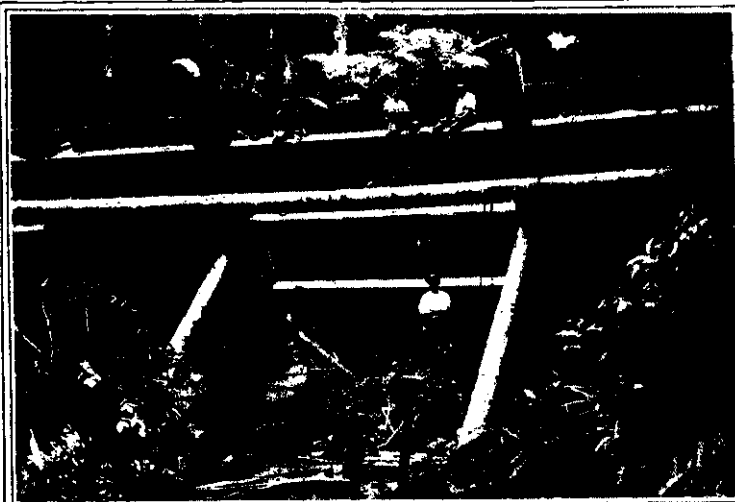
J. N. M. Carroll, photo.

IN THE KAURI FORESTS OF THE NORTH.

Striking Characteristics of New Zealand's Most Picturesque and Valuable Industry.

THE KAURI TIMBER FORESTS OF NEW ZEALAND—soon, alas, to be a thing of the past—are amongst the most beautiful and valuable of the present possessions of the Colony. Some idea of the glories of a Kauri Bush may be gained from the picture on this page of a gigantic specimen in the Pikiwahine Bush, Northern Wairoa, Auckland. The average girth of this tree is 28 feet by 60 feet high, and it was estimated to cut into 35,000 feet of timber. On the opposite page are shown two decided curiosities, a Triplet Kauri, a tree with three trunks on the parent stump, this being very rare; and yet another with no less than four, which is believed to be positively unique, no other similar freak of nature being reported to our knowledge. The triplet is in Taine's Bush, Maungaturoto, and the quadruple tree at McCarroll's Bush, Northern Wairoa.

LOGS READY FOR THE TRAMWAY



Making a Dam on a Bush Creek.



LOGS READY FOR THE TRAMWAY TRUCKS.



FOUR TREES ON ONE ROOT--UNIQUE.



TRIPLET KAURI.

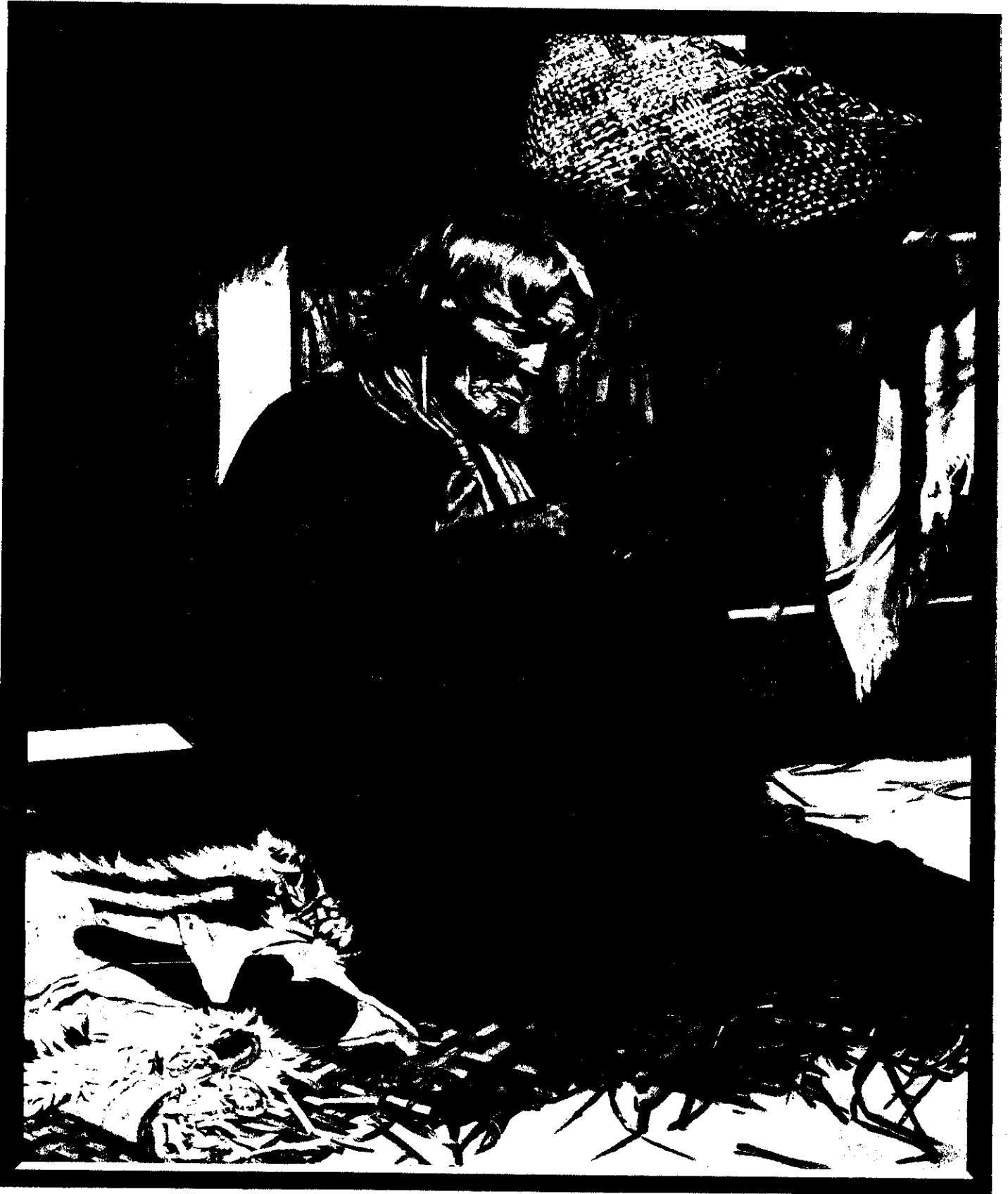


LOG IN MID-AIR ROLLING DOWN TO THE TIDE.

J. N. McCarroll, photo

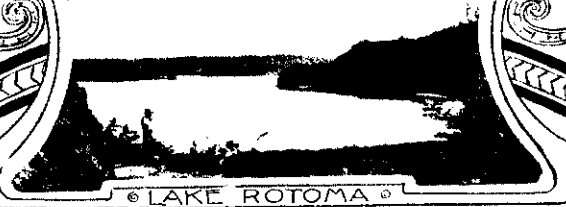
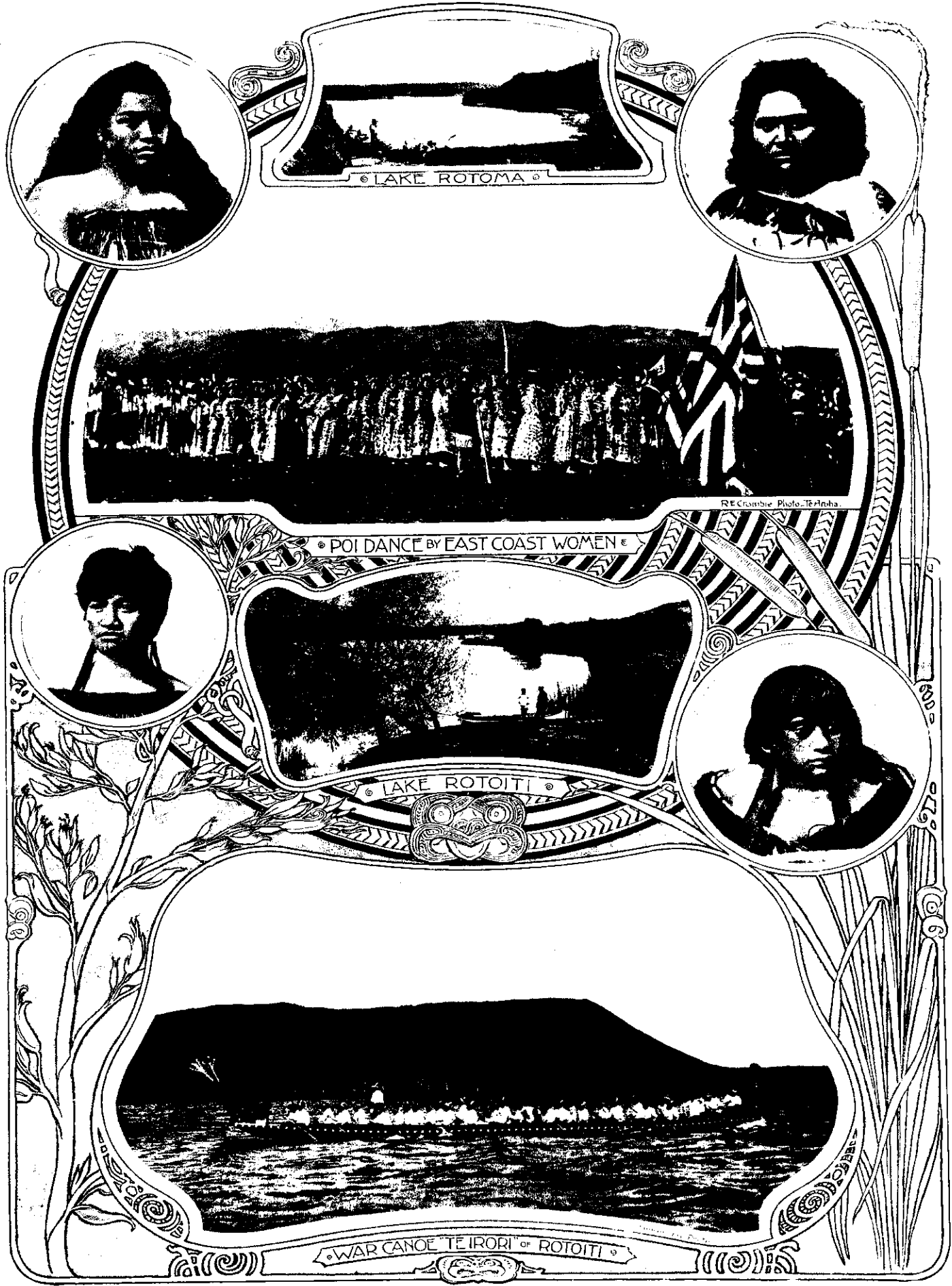
IN THE KAURI FORESTS OF THE NORTH.

Striking Characteristics of New Zealand's Most Picturesque and Valuable Industry.



"THE WIDOW."

This fine painting by Mr. C. F. GOLDIE is by many considered to be the artist's masterpiece. It was presented to Lady Ranfurly on the eve of her departure from the Colony by the citizens of Auckland, and is now reproduced by special arrangement with Mr. Goldie.



LAKE ROTOMA

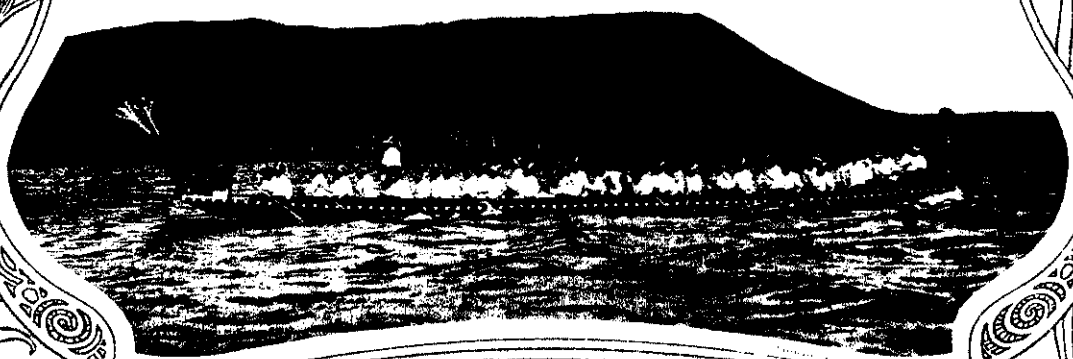


RE Crumie Photo - Te Anaha

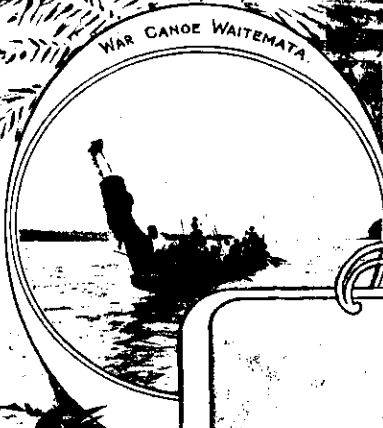
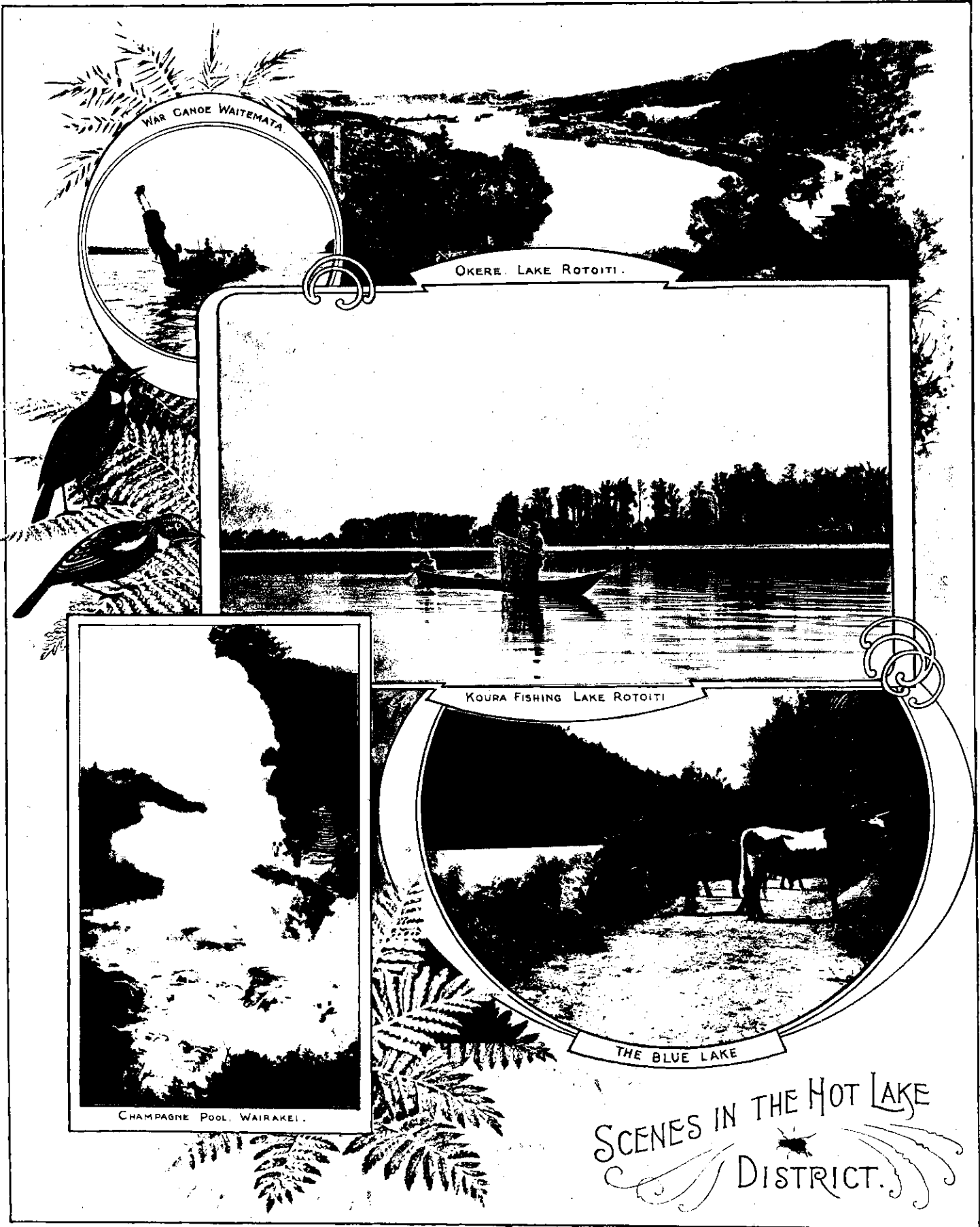
POI DANCE BY EAST COAST WOMEN



LAKE ROTOITI



WAR CANOE TE IRORI OF ROTOITI



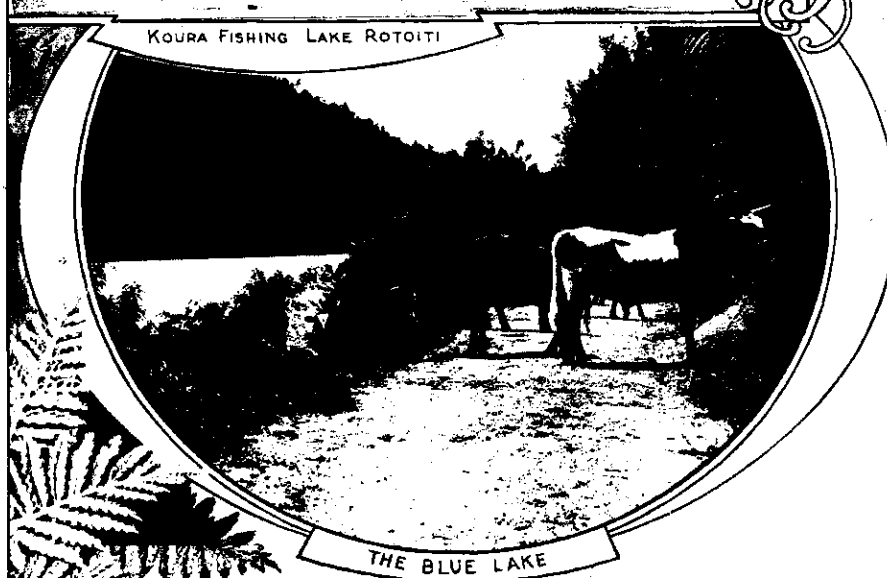
WAR CANOE WAITEMATA.



OKERE LAKE ROTOITI.



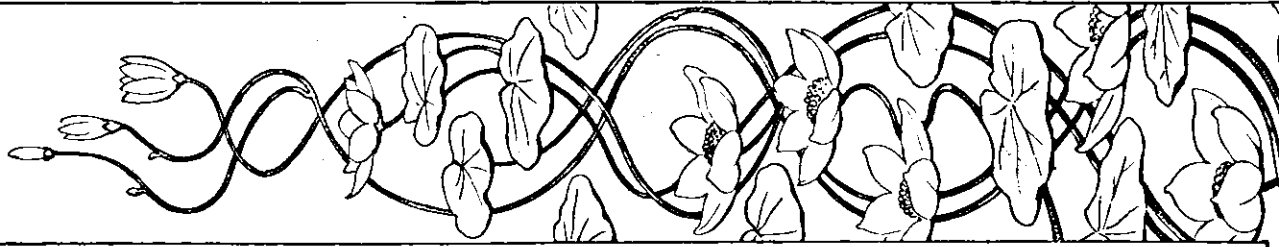
CHAMPAGNE POOL, WAIRAKEI.



KOURA FISHING LAKE ROTOITI

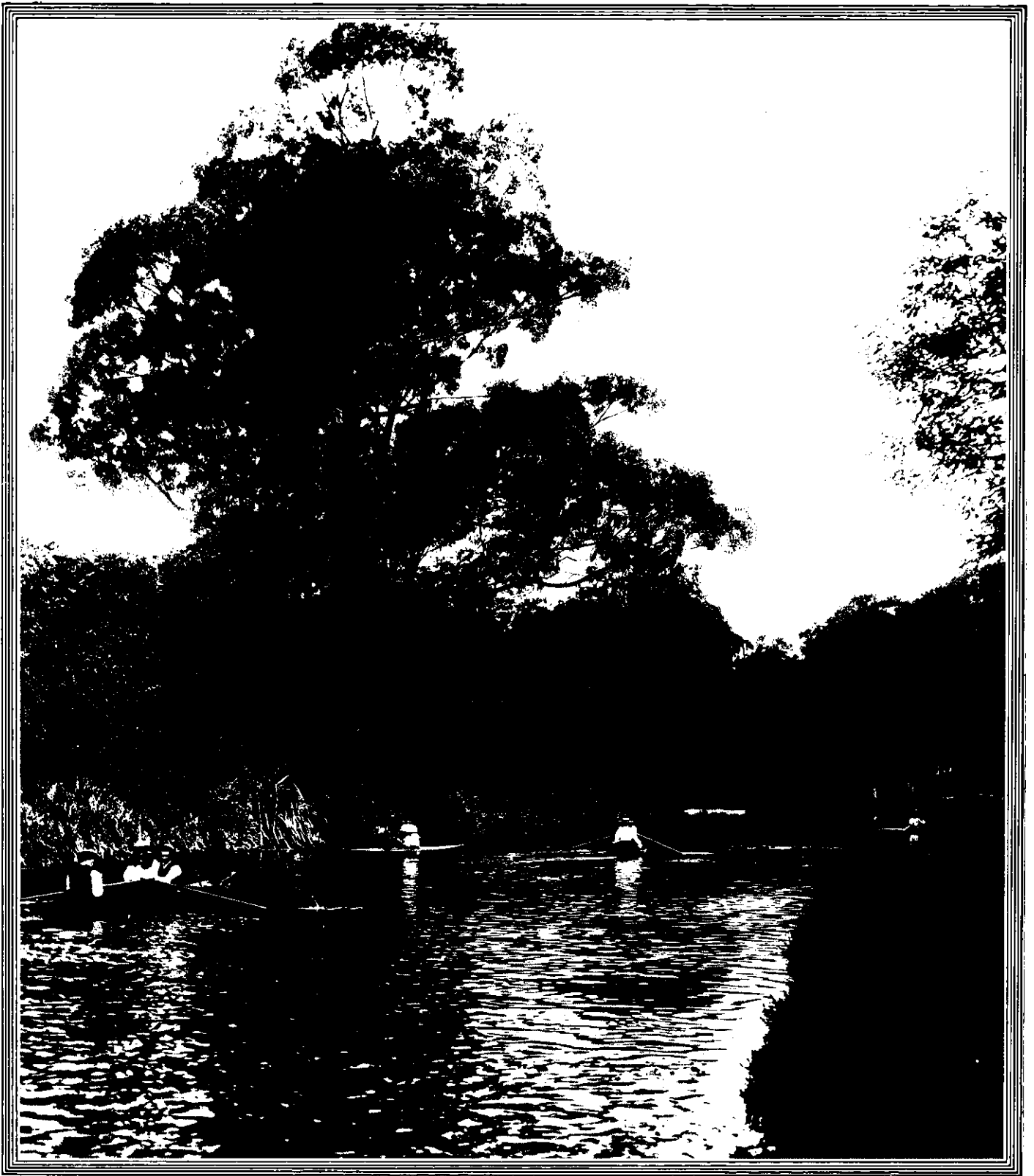
THE BLUE LAKE

SCENES IN THE HOT LAKE
DISTRICT.



TREE FERNS IN NEW PLYMOUTH RECREATION GROUNDS.

One of the Most Beautiful Characteristics of New Zealand Vegetation.



Kinnear, photo.

BOATING ON THE AVON, CHRISTCHURCH, NEW ZEALAND.

EVERY large city in New Zealand has its own special scenic attractions, but there is only one Christchurch and one Avon. The "City of the Plains" cannot of course vie with Auckland, or Wellington, or Dunedin in the scale or the impressiveness of its surroundings; but the little river that wanders through the town goes far to make up for the absence of sea, or bush, or hill. It is a tiny little stream at best, for its source in upper Riccarton is not more than ten miles in a direct line from the sea. But the value of rivers cannot be measured by length alone, and the Avon is to Christchurch a unique and most beautiful possession. It is deep and broad enough even for regattas for about seven or eight miles of its course below the town, and some of the best oarsmen and most famous rowing crews that the Colony has produced have trained on the long stretch of winding water between the "Willows" and the Estuary. There are three or four rowing clubs and three or four boat sheds, at which visitors can hire light pleasure boats; and the amount of sculling, canoeing, and even punting done on the Avon in summer simply defies calculation. For though the river in and above the town is too shallow and too narrow, and too winding for serious rowing, yet it is an almost ideal stream for a boat on a summer afternoon or evening. To float on its clear pure waters—cold as the snow from which its sources spring—under the drooping boughs of huge old trees between the high green banks where the tall grass hides the buttercups, to watch the speckled trout darting from under the boat's keel as silently it drifts down the stream, to mark the change of light and colour on the surface from the bright ripple over grey shingle beds to the cool green depths of shadow among the roots of the giant willows; to know the Avon, in short, is to gain an insight into the peace and perfection of quiet sylvan beauty that no other scene can afford, even in this land so richly dowered with all the gifts that lavish Nature can bestow.



Protected photo., by G. Parkerson.

NEW ZEALAND'S THERMAL WONDERS.
WAIROA GEYSER, WHAKAREWAREWA, IN ACTION.



TABLELANDS NEAR MARTINSBOROUGH

ROAD NEAR

TUPURUPURU

SCENES IN THE WAIRARAPA VALLEY.

A GLIMPSE OF MOSES BAY WHANGAROA.



WEST BAY WHANGAROA



A PICTURESQUE CLIFF



OKAHUMOKO BAY WHANGAROA



GENERAL VIEW OF RUSSELL AND THE BAY OF ISLANDS.



MOTERING IN NEW ZEALAND.

Motor Pleasure Launch on Lake Kanieri, West Coast.

A Motor Car on a Beautiful Bit of Bush Road.



FEEDING THE DUCKS



THE MOST BEAUTIFUL AND MOST POPULAR OF THE ROTORUA SIGHTS—HAMURANA SPRINGS.

BOX 93.
REG. CABLE ADDRESS: "PATENTS."

WORLD-WIDE PATENTS

TELEPHONE 1524.
TELEGRAPHIC ADDRESS: "PERCY BASLEY, AUCKLAND."

All Work Executed under Personal Supervision.

TRADE MARKS, DESIGNS AND COPYRIGHTS

Obtained by

PERCY H. BASLEY
REGISTERED PATENT AGENT

BRADFORD BUILDINGS (Next Smarton's Store)
73, QUEEN STREET, AUCKLAND.

SYDNEY JONES
D.O.A., B.H.I. 146, KARANGAHAPE ROAD, AUCKLAND

GRADUATED OPTICIAN and HOROLOGIST

66—18ct. Keeper, 25/9ct., 15/.

90—To Suit All Sights. Buckle Ring, 30/.

40—

85—18ct. Engagement Rings. From 25/ to £10.

98—Greenstone Brooch, Gold Bell, 17/6.

Greenstone Hearts. From 2/6 to 30/.

100—Greenstone and Gold Links, 86—Ladies' and Gent.'s Watches, 36—18ct. Keeper, 30/.

From 15/.

From 8/6.

84—9ct. Band Rings. From 7/6 to 30/.

78—Gold Mizpah Brooch, 17/8.

The Cheapest and Most Reliable House in Auckland

Send for Handsome Price List, over 200 Illustrations, post free to any address.

AUCKLAND LAPIDARY and JEWELLERY WORKS...

Genuine N.Z. Greenstone and Quartz Jewellery CUT and MOUNTED to Latest Designs at Manufacturing Prices.

H. A. Nielsen & Son
57, Albert Street (Near Star Hotel) and H.M. Arcade, Queen Street, Auckland.

G. W. S. Patterson & Co.

GORE STREET, AUCKLAND,
And at 81, PINE STREET, NEW YORK.

Kauri Gum Merchants

Prompt Account Sales Rendered. Commission Executed for Country Settlers.

HIGHEST MARKET PRICES Given for All Consignments of GUM.

SEE OR WRITE TO PHONE 1051

George Rhodes
BUILDER,
14, Custom Street West, Auckland,
FOR ANY PRIVATE WORK (Town or Country).
RELIABLE MEN AND FIRST-CLASS WORK.

Ask for **RHODES' A1 POULTRY GRIT**,
Also (for Garden use) his "**ROUGH ON SLUGS**" and "**R. on S.**" DISTRIBUTORS.

Used all over New Zealand. Put up in 12lb. Branded Bags and larger.

By Special Appointment to His Excellency Lord Roubilly.

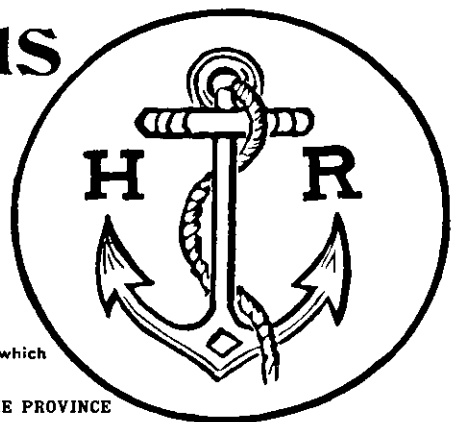
Schmidt
Hemus'
VICE-REGAL
Studios

MEDALLIST
WORLD'S FAIR, ST. LOUIS.
270 QUEEN STREET, AUCKLAND, N.Z.
TELEPHONE - - - - 1264.



World-famous Butter

IT IS THE BEST! IS IT ON YOUR TABLE?
These are the Brands .. that are Famous ..



You will avoid disappointment if you decline other brands which are said to be "just as good."

SOLD BY ALL STOREKEEPERS AND DAIRYMEN THROUGHOUT THE PROVINCE

The New Zealand Dairy Association, Limited, Wellesley St., Auckland



PINK TERRACE.



THE HOT WATER BASINS - WHITE TERRACE.

Hutton Bros., photo.

TWO OF THE LOST GLORIES OF NEW ZEALAND, Destroyed by the Tarawera Eruption, June, 1886.

GOLD MEDAL, WOMAN'S EXHIBITION, LONDON, 1900.

Neave's

"Highly Nutritious."
LANCET.

ESTABLISHED
NEARLY 80 YEARS.

For Infants, Invalids, and the Aged.

Food

"Not so binding to the bowels as many foods are."

PYE HENRY CHAVASSE, F.R.C.S.E., & Co.

"AN EXCELLENT FOOD, admirably adapted to the Wants of Infants."

SIR CHARLES A. CAMERON, C.B., M.D., Ex-President of the Royal College of Surgeons, Ireland.

Manufacturers.—JOSIAH R. NEAVE & CO., FORDINGBRIDGE, ENGLAND.

PURVEYORS BY SPECIAL APPOINTMENT TO H.I.M. THE EMPRESS OF RUSSIA.

F. H. LEONARD & Co. MANUFACTURERS' REPRESENTATIVES



Correspondence solicited from Manufacturers of BRITISH, CONTINENTAL or AMERICAN GOODS.

BRUCE WOOLLEN MANUFACTURING CO., LIMITED
MILTON

Manufacturers of
BLANKETS, FLANNELS, TWEEDS,
RUGS, Etc.

F. H. LEONARD, AUCKLAND AGENT
Head Office and Sample Rooms—
3, Lorne Street, Auckland.

Once
GIVE US AN
OPPORTUNITY

to cater for your requirements, the Quality and Prices of our Goods will attract and keep you as a permanent customer of



Geo. R. Hutchinson & Co.
Universal Supply Stores & Khyber Pass Rd., Auckland
OUR ONLY ADDRESS.

GEO. KNIGHT & SONS CASH AND FAMILY BUTCHERS



We guarantee the Primeest Quality of Ox Beef and Wether Mutton, Lamb and Dairy-fed Pork, etc.

PRICES CANNOT BE SURPASSED.

FAMILIES WAITED ON DAILY FOR ORDERS.

KARANGAHAPE ROAD, AUCKLAND
Also THREE LAMPS, PONSONBY, and the GREAT NORTH RD., GREY LYNN.

Direct Importer

OF
WALLPAPERS AND FRIZES,
PICTURE MOULDINGS,
ARTISTS' MATERIALS,
and
ART PICTURES.

WINDOW GLASS
and all
Trade Requisites.



M. J. BENNETT Importer and Decorator

195, NEWTON, AUCKLAND.

'PHONE 936.

Correspondence invited.

FRED. BROWN'S VENETIAN BLIND FACTORY

WE MAKE THE BEST BLINDS IN NEW ZEALAND.

FRED. BROWN

EXPERT

VENETIAN BLIND MAKER

TWENTY YEARS BEFORE THE PUBLIC,
AND EVERYBODY SATISFIED

AND STILL HE LEADS

'PHONE 914.

Factory—PONSONBY ROAD, AUCKLAND

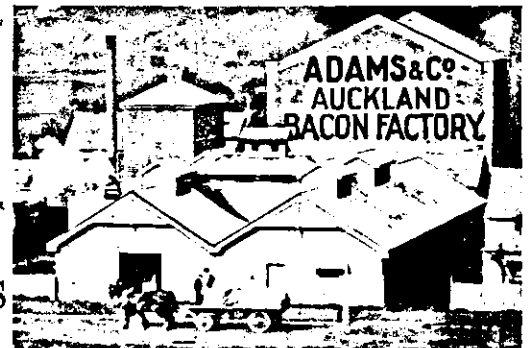
J. ADAMS & CO.

ARE BUYERS OF
FIRST-CLASS

**Bacon
Pigs**

IN ANY
QUANTITIES
ALL THE YEAR
ROUND.

**J. ADAMS
& Co.,**



Auckland Bacon Factory, Stanley St., Auckland

Glorious Holiday Trips

*Rest
Recreation
Sight-Seeing*

Ideal Vacations for Business Men.

*"Summer Isles of Eden lying
in dark purple spheres of sea."*

Fascinating Journeys for the Traveller.

The South Sea Islands.

From April to November, no more delightful excursions can be conceived than those to the South Sea Islands. Here in "Edens floated out to sea" the traveller, unweary by the tumults and worries of the outer world, finds delightful rest and change, and views scenes of native life and tropical beauty unparalleled in all the world for interest and picturesqueness. No one who has visited the Islands ever forgets the "blue changeless ocean, the crooning of the coral reef, the feathery palms, the spreading forest trees."

The splendid steamships "Manapouri," "Hauroto," and "Taviuni," and the magnificent new twin-screw steamers "ATUA" and "NAVUA" sail regularly every month from Auckland or Sydney to the Islands, visiting Suva, Levuka (Fiji); Tonga, Haapai, Vavau; Apia (Samoa); Rarotonga; Papeete (Tahiti) in five different Island groups.

Break of journey at any point allowed. TICKETS GOOD FOR THREE MONTHS, and extended if required. Detailed information at any of our offices.



Native Beauty.



In the South Sea Islands.

In all the
World no
Trips like
these.

Follow the Flag. THE ALL RED ROUTE to LONDON, etc.



CANADIAN ROCKIES.

VIA VANCOUVER: The Scenic Trip of the World.

By far the most interesting route to Canada, United States, and the Old World is *via* the Canadian-Australian Royal Mail Line and Canadian-Pacific Railway.

For variety and magnificence of scenery this route is absolutely unsurpassed. Leaving Sydney every four weeks, the C.A. steamers call at Suva and Honolulu (where the lovely tropical scenery of the South Sea Islands may be viewed), touch afterwards at Victoria (British Columbia), and finally end a glorious sea voyage at Vancouver.

Thereafter the journey is by the magnificent C.P. Railway. The stately Rockies, the boundless Canadian Prairies, the Great Northern Lakes, are all traversed; and the traveller sees also the Niagara Falls, the St. Lawrence and Hudson Rivers, and the great industrial centres of Canada; or the journey may be made through the United States.

The trip is a positive revelation to even the most travelled, and affords an unrivalled opportunity of seeing the sights and scenes depicted by famous travellers and writers.

Across Atlantic by any line from any Canadian or United States Port.

ROUND-THE-WORLD Trips, in either direction, arranged in conjunction with lines *via* Suez, Cape, India, and Japan. Maps and all information supplied on application.

Union Steam Ship Co. of New Zealand, Ltd.



Photo, by West's Cinematograph.

REHEARSING A POI DANCE AT OHINEMUTU, ROTORUA.



YOU!!!

Can get WELL SERVED with all you require in the way of

FAMILY and HOUSEHOLD DRAPERY and BOYS' and MEN'S CLOTHING

At Rushbrook & Bridgman's

CASH BUYERS

364, 366, 368, 370,

DIRECT IMPORTERS

QUEEN ST. and through to WAKEFIELD STREET

THEY SPARE NO EFFORT TO GIVE SATISFACTION TO CUSTOMERS.

Just above the GREY STATUE

THEIR REPUTATION for keeping the BEST GOODS and SELLING CHEAP is WELL ESTABLISHED.

Prompt Attention to Orders

Parcels value 20/- and upwards sent carriage paid to nearest Port or Station reached direct from Auckland.

SOLE AGENTS for the NOTED

Cabbage Tree Brand Calicoes and Sheetings

They are **THE BEST.**



"Ake Ake" Brand CLOTHING
Unrivalled for FIT, STYLE, MATERIAL and GOOD WEAR.



WILLIAM CHAMBERS

8 Years' Experience in LONDON; 15 Years' Experience in MELBOURNE, including 7 years Head Cutter for the MONSTER CLOTHING CO.; also 7 years Head Cutter for the D.S.C., Auckland. Thoroughly up-to-date methods. Highest Class Goods. Style and Fit Guaranteed.

TAILOR
and CLERICAL ROBE MAKER

135 Queen St. Auckland
Next Bank New Zealand

W. GRIBBLE Importer



EDEN TERRACE AUCKLAND.

EVERY REQUIREMENT IN

Up-to-date Drapery, Millinery, Mercery and Clothing AT BROOK PRICES.

Special Attention given to Parcels made up to Country Orders.

Our Stock is New AND **Our Prices will be found Unbeaten.**

W. Gribble
Opposite Old Brewery, EDEN TERRACE.



Triumph of Modern Scientific Methods

NO UNSIGHTLY GAPS in the mouth after Extraction. **NO DISTRESSING EFFORT** TO SPEAK.

Natural and **PERFECT-FITTING TEETH** replaced immediately after Extraction.

A Beautiful Set of Teeth for 35s.

THAT'S WHAT MAGIC TEETH MEAN. **Painless Extractions.**—We wish to inform our patients that we GUARANTEE AN ABSOLUTELY PAINLESS EXTRACTION AT THE LOWEST RATES IN THE CITY.

SPECIALITIES.
A Specialist for each department. **BRIDGE-WORK** (teeth without plates)—In this particular branch our Specialist excels for durability, cheapness, and beauty. **CROWN WORK**—In this class of Dentistry our Specialist has no equal in the Colony. **PIVOT TEETH**—For durability, appearance and economy our Specialist defies competition. **SUNKEN LIP and CHECK**—Our Specialists are able to reproduce the former contour of the countenance. **RE-MODELLING**—Other Dentists' work re-modelled by experts.

Your Money Back if not Satisfied

We wish to notify our Country Clients that we have augmented our staff of expert Specialists in order to cope with the increase of business during the Xmas vacation, and that our staff is able to treat each case without delay.

EXTRACTIONS, 1/- GAS, 2/6. NO CHARGE FOR EXTRACTIONS where Sets or Partial Sets are ordered. **NURSE IN ATTENDANCE. GOLD WORK EXECUTED FOR OTHER DENTISTS.**

Newton Dental Company
Corner Howe St. & Karangahape Rd., Auckland
Telephone 1384. **G. MERVYN RYLANCE, Manager**

WILSON'S "Star" Brand Portland Cement



ESTAB. 1889.



RANGITOTO BEACON, entrance to Auckland Harbour. Built in 1866 with WILSON'S "STAR" BRAND PORTLAND CEMENT.

Guaranteed to Pass the World's Standards for Soundness, Strength and Fineness. Used for all purposes to which imported applies.

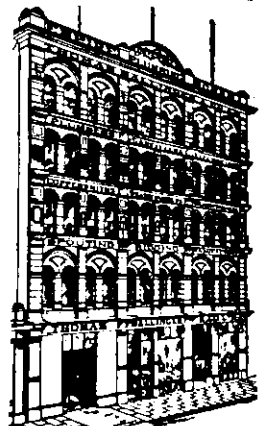
TO FARMERS—CONCRETE MEANS CHEAP, CLEAN YARDS. Advice and Estimates of Materials Free

MAKERS OF **"Star" Brand Hydraulic Lime**
THE BEST BUILDING LIME.

Also **TE KUITI AGRICULTURAL LIME.**

ENCOURAGE COLONIAL INDUSTRIES.

John Wilson & Co., Ltd.
26, Shortland Street, Auckland.



Building erected by Thomas Ballinger & Co., Ltd., Wellington. The floor, columns and staircases are composed of concrete made with WILSON'S "STAR" BRAND PORTLAND CEMENT; the front is plastered with the same Cement.



VALUE
not Words
OUR POLICY.

Advanced Ideas
Faultless Fit
Thorough Satisfaction

Percy W. Bolland
MERCHANT TAILOR

Union Bank Buildings, corner Victoria and Queen Streets,
AUCKLAND.

Telephone 1292.



McCOSKRIE & SON

ENGINEERS, IRON AND

CHAPEL ST., BRASS FOUNDERS, ETC.
AUCKLAND.

HYDRAULIC PASSENGER ELEVATORS AND
GOODS LIFTS A SPECIALITY.

Water Meters and
Spare Parts
Flexible Wire Ropes
Peet's Valves, etc.,
ALWAYS ON HAND.

Belt Holsts for Con-
tractors or others
Steam Winches, etc.,
IN STOCK.

IT STRIKES YOU LIKE A FLASH! what? TUTT'S

Specialties-----

HATS
SHIRTS
TIES
PYJAMAS
UNDERWEAR
ETC. ETC.

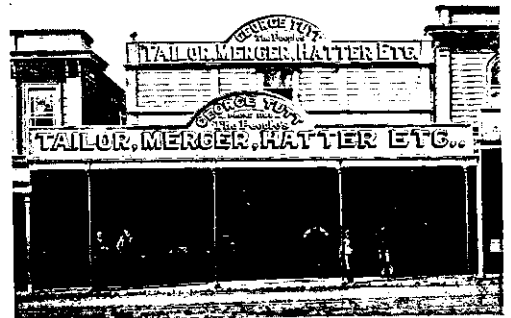
FRESH GOODS
CONSTANTLY
ARRIVING.

THE
PEOPLE'S
Tailor and
Mercer.

'Phone 1188.

Country Orders Promptly Despatched under personal supervision. Samples forwarded by return of mail.

GEO. TUTT, Upper Symonds Street, Auckland



W. WILSON GENERAL SMITH ALBERT STREET,
Heel-Tip and Toe-Plate Manufacturer ...AUCKLAND...



Wrought Iron Entrance Gates and Fence made for A. M. MYERS, Esq.

ORNAMENTAL WROUGHT IRON ENTRANCE GATES and FENCES In any Design Made to Order, at Moderate Prices.

Sole Maker of.....

WILSON'S PATENT IMPROVED SWINGLE-TREE IRONS

'Phone 1441

Bridge Iron Work,
Builders' Iron
Work, Grave
Fences and Jobbing
Work of all kinds
Made and Repaired
at Low Rates.

WHY do you pay

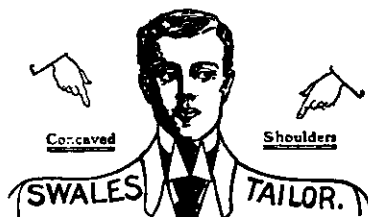
a Fancy Price for inferior tailoring when
you can GET THE BEST FOR THE
SAME MONEY from.....

R. H. SWALES

MERCHANT TAILOR

VICTORIA STREET WEST, AUCKLAND?

CONCAVED SHOULDERS IS MY REGISTERED TRADE MARK.



Concaved

Shoulders

TRADE MARK REGISTERED.

There is individuality
about the Clothes
made by

R. H. SWALES

Concaved Shoulders is my
Registered Trade Mark.

There is pleasure in
wearing a well-
tailored garment,
because there is
comfort in it.

BATH HEATERS.

The CHEAPEST, SAFEST and
NATTIEST BATH HEATER in the
Market. Fitted up in your Bath-
room, City and Suburbs, complete for
The burning of a couple of newspapers will give
you a hot shower, and a few small pieces of wood a
hot bath. Should be in every home.

85/-

The Fischer Bath Heaters

A Boon for the Country (Delivered at Rail or Steamer) Price 60/-

CAN BE SEEN AT

A. M. BRYDEN'S
OFFICE.

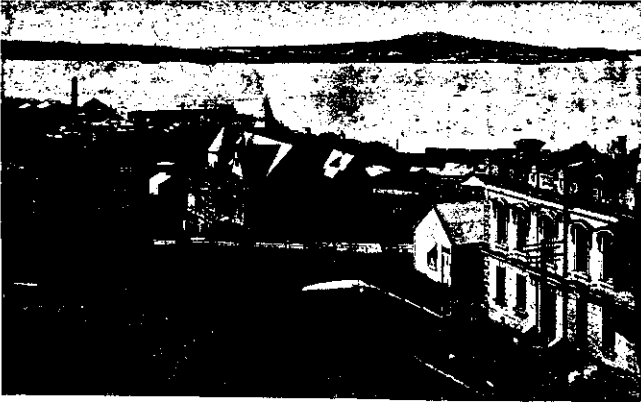
Queen Street, Auckland
(Next to Yates', Seedsmen)

UNDER ROYAL

PATRONAGE.



The GRAND HOTEL Auckland



VIEW OF AUCKLAND HARBOUR FROM VERANDAH OF THE GRAND HOTEL.

OCCUPIES a position of almost unequalled beauty and magnificence, commanding an unrivalled view of the Waitemata Harbour, the islands of the Hauraki Gulf, and the surrounding country. It affords its guests one of the most luxuriously-comfortable homes in the Southern Hemisphere.

Cable Address for Australia: "GRANDEE," AUCKLAND.

JAMES ROLLESTON ♦ ♦ ♦ Proprietor

AGENTS THROUGHOUT THE COLONY.

IMPERIAL ALE & STOUT

Awarded the
GOLD MEDAL
for
Excellence of Quality
At St. Louis, 1904.

IMPERIAL ALE & STOUT

HANCOCK & CO.,
BREWERS and BOTTLEERS,
Auckland, N.Z.

LAKE HOUSE HOTEL

This Hotel is so well and favourably known as to need no comment. The most commanding position in the district, on the borders of the magnificent Lake Rotorua.

Twelve Separate Bath Houses are situated on the splendidly laid out grounds of the Hotel, the hot mineral waters of which have highly curative and valuable medicinal properties.

Free Conveyance between the Hotel and the noted "RACHEL" Baths, "POSTMASTER," "PRIEST," and

Ohinemutu, Rotorua

Tariff:
8/6 per day
£2 10s. per week

COOK'S COUPONS ACCEPTED.

F. WATKINSON ♦ ♦ ♦ Proprietor

Geyser Hotel

SITUATED IN A UNIQUE POSITION CLOSE TO THE WONDERFUL GEYSERS AND MAORI SETTLEMENT,

Visitors staying at the Geyser Hotel have continued opportunity of witnessing them, as they can be seen playing from the verandah of the Hotel, also of studying native life and customs.

The Hotel possesses its own private Hot and Cold curative Mineral Baths, of which the most valued are the "Spout," "Oil," and "Carlsbad" Baths. It has lately been very much enlarged and refurnished throughout in a most luxurious style, thus making it on a par with the best and leading Continental Spa Hotels. The Electric Light is established throughout Hotel and Baths.

Whakarewarewa, Rotorua

TOI OH PARLE FRANCAIS
MAN SPRICHT DEUTCH

Tariff:
10s. per day
£3 per week
or for a lengthened stay easier terms can be arranged

COOK'S COUPONS ACCEPTED.

CHAS. E. NELSON ♦ ♦ ♦ Proprietor

N.B.—Tourists staying at the Geyser Hotel are on the spot. Constant coaches run regularly between Whakarewarewa and the Rotorua Sanatorium, and vice versa.

John Chambers & Son Ltd.,

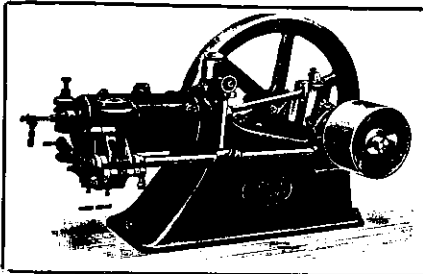
SOLE VENDORS FOR **TANGYE**

GAS ENGINES

Suppliers also of the same Firm's
KEROSENE and BENZINE ENGINES

STEAM ENGINES
STEAM BOILERS, &c., &c.

Catalogues and full particulars on application.



AND
"Suction" Gas Producers.

With this plant power can be produced at ONE-FIFTH OF A PENNY per Brake Horse Power per hour in New Zealand.

AUCKLAND, WELLINGTON, DUNEDIN,

CHRISTCHURCH, WANGANUI.

TE HANGI

Queen Street, Auckland

Opposite Goodson's
London Arcade

Luncheon and Tea Rooms



Corner of the Afternoon Tea Room.

Our ambition is to give the very best value and service in the city, and day by day, month by month, to keep up the standard. Ladies when shopping will find **TE HANGI** the most attractive place to lunch. The Dining-room is bright and cheery; the appointments, service and cuisine are most excellent.

The Private

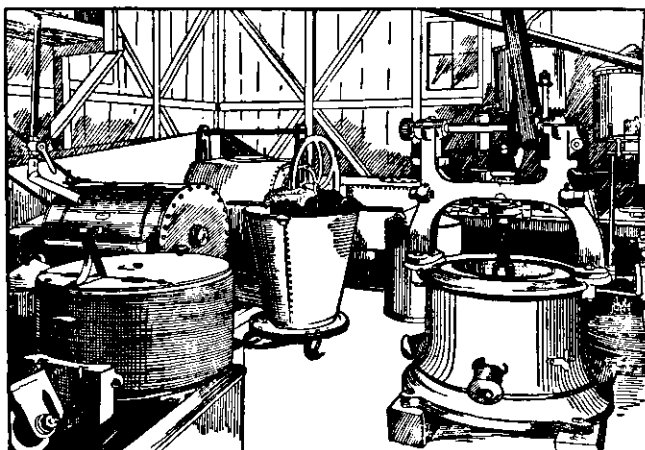
Afternoon Tea and Lunch Rooms

upstairs are on the most chic and up-to-date plan. Every delicacy of the season can be had at **TE HANGI**, and as accessories you get quietness and the comfort that comes from perfect ventilation, and music meanwhile.

The Chain that holds our Customers is strong; each link is watched carefully.



View of the Luncheon Room.



NETTOYAGE A SEC.

(The above illustration represents a part of our Appliances for French Dry Cleaning.)

Ladies can now have their most elaborate Costumes, Fancy Dresses, Capes, Blouses, Furs, and Hosiery done by this process. No part of the linings, trimmings or ornaments need be removed; the goods are not shrunk or altered in shape, the lustre and finish are preserved, and the most delicate colours are not injured.

Gentlemen's Dress Clothes and Summer Suits are made equal to new by this process.

D. & A. BROWN, HIGHEST-CLASS CLEANERS AND DYERS,
SHORTLAND STREET,
WORKS: GRAPTON TERRACE, AUCKLAND.

ESTABLISHED 1866.

PURE FRUIT JELLIES
DELICIOUS AND THE VERY FINEST
CUSTARDS
AND VERY PRODUCE

AT ALL STORES THROUGHOUT NEW ZEALAND.

For Highest Purity order only Tucker's Manufactures.

TUCKER & COMPANY, AUCKLAND.

Melange

MARKING INK FOR LINEN.

IN ONE BOTTLE. TRY IT ONCE, AND YOU WILL USE NO OTHER KIND.
WARRANTED INDELIBLE AND HARMLESS ON ANY FABRIC. REQUIRES NO HEATING OR MIXING.

Inventors and Makers: Cooper, Dennison & Walkden, Ltd., London.

"PERIODIC" PILLS

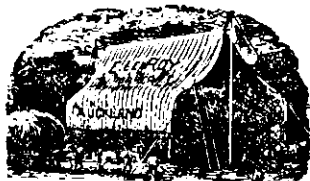
2/6; Extra Strong, 4/6.

The most Certain Medicine for all Irregularities
The Most Successful Remedy prepared solely for
Female Ailments. Full directions with each box.
Once used always kept on hand for emergencies.
Post Free for Amount in Stamps.

FROM
RUSSELL, CHEMIST, P.O. PHARMACY,
UPPER SYMONDS STREET, AUCKLAND.
N.Z. AGENT FOR THE "PERIODIC" PILL CO.

Be sure you get "PERIODIC" PILLS—Trade Mark Registered.
There is no other Medicine in any way equal
to them for all irregularities.

"PERIODIC" PILLS.

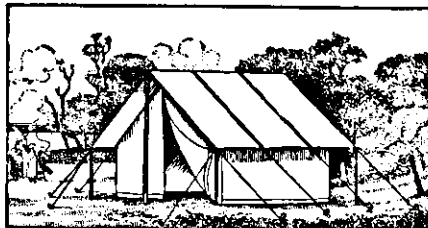


STACK COVERS.

FOR HIRE

FOR CAMPING, ETC.

Tents
Tables
Chairs
Stretchers
ETC. ETC.



THE OLD PATTERN TENT AND FLY, WITH WINDOW AND LATEST IMPROVEMENTS.

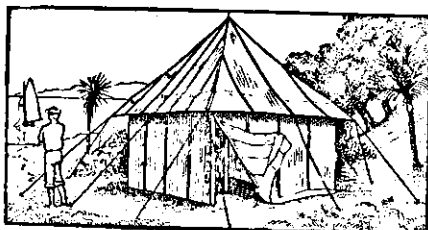
MARQUEES
for Weddings, etc.

FLAGS
HAMMOCKS
SWING CHAIRS



HORSE COVERS

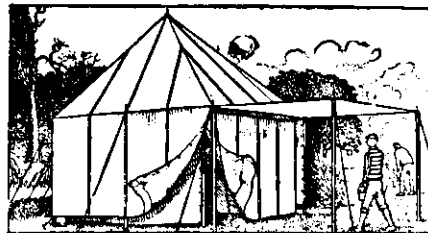
PRICE LISTS POST FREE.
WRITE OR CALL FOR ILLUSTRATED CATALOGUE.



DOUBLE-ROOFED TENT—A GREAT FAVOURITE.

E. Le Roy,
TENT AND COVER MAKER,
42, Queen Street
Auckland (OPPOSITE SMERTON'S)

PHONE 1104.



COMPLETE DOUBLE TENT—MOST PERFECT TENT MADE.

R. O. CLARK

Drain Pipe Manufacturer.

ALWAYS ON HAND—A Large Stock of MEDIUM QUALITY PIPES, which can be supplied on short notice at Low Rates.

THE QUALITY OF CLAY FROM WHICH THESE PIPES, ETC., ARE MADE IS UNIVERSALLY RECOGNIZED AS THE BEST IN NEW ZEALAND FOR POTTERY PURPOSES.

Special Quotations to Road Boards, County Councils, Etc.

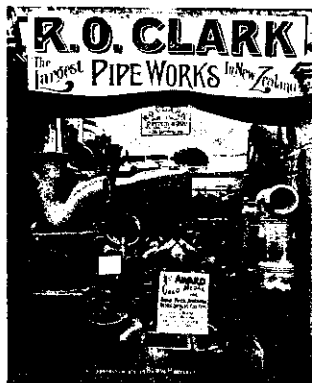
TOWN YARDS AND OFFICE:—

Customs St. West, Auckland

Orders forwarded to above Address will be punctually attended to.

WORKS: HOBSONVILLE.—The Works being alongside water, special quotations can be given for Exportation. Vessels loaded with despatch.

DESCRIPTIVE CATALOGUES ON APPLICATION.



Telephone 559.

Manufacturer of SOCKET PIPES (in all sizes), BENDS, JUNCTIONS, SYPHONS, CESSPITS, Etc., generally acknowledged to be

The
**Best Pipes in
New Zealand**

R. O. CLARK was awarded The Only First Prize and Gold Medal at the Auckland Exhibition, 1898 and 1899, for Glazed Socket Pipes, Bends, Junctions, Syphons, and Cesspits.

The Judges report: "We consider this a particularly good and excellent exhibit of its class."
Awarded Special Gold Medal, Auckland Exhibition 1896 and 1897.



WHERE THE DRY-CLEANING IS DONE.
Karangahape Road—Opposite Tabernacle; Onehunga, MR. LOMAS;
Mount Eden, MR. CUCKEY; Ponsonby, MR. WOOD.
Goods called for and delivered to any address.

WORKS: MARKET ROAD, EPSOM. TELEPHONE 1741.

F. J. Porter,

KARANGAHAPE ROAD, DYER AND
AUCKLAND, FRENCH DRY CLEANER.

Has imported and has now working

The Latest Machinery for French Dry
Cleaning and Dyeing

And is now prepared to do all classes
of DYEING and CLEANING at
Lowest Rates.

Country Orders by Post
receive special attention.

R. W. de MONTALK
ARCHITECT



Architect for The Auckland
Industrial and Mining Ex-
hibition, 1898-1899.

Undertakes all kinds of
building work in any
part of the colony.

Correspondence
answered promptly.

Loans arranged for
building purposes only.

22, Mining Chambers,
Queen Street, Auckland.



J. Wiseman & Sons

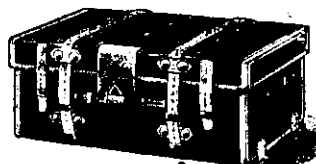
(LIMITED)
AUCKLAND, N.Z.

LEATHER GOODS

OF FINEST QUALITY AND FINISH.

BAGS and all
TRAVELLING
REQUISITES

SADDLERY
HARNES
COLLARS



All Goods Bearing our Registered
Brands are Unexcelled for



NEWEST IDEAS
and
UP-TO-DATE
NOVELTIES
in all
Departments

VALUE, STYLE
and FINISH.

Telephone 331. P.O. Box 248.

CARPENTER ARTHUR

Auctioneer

Regular Sales of Produce and Fruit held Every Week.

FURNITURE SALES CONDUCTED.
PROMPT ACCOUNT SALES.

A TRIAL SOLICITED.

City Market Auckland.

The House for Fine Goods at Fine Prices

Where Country People get
The Best Value
The Best Variety
The Best Attention



TATTERSFIELD & CO.
Drapers,
Pitt St. & Karangahape Rd., Auckland


VICTORIA FLOUR MILLS and STEAM BISCUIT FACTORY

SYMONDS STREET, AUCKLAND, opposite Cemetery Bridge Road
ESTABLISHED 1842.

J. Partington
Manufactures all kinds of
PLAIN and FANCY
Biscuits
Also
FLOUR
WHEATMEAL, MAIZE MEAL, PATENT BARLEY MEAL, Etc.



RETAIL AS WELL AS WHOLESALE.
BISCUITS PACKED in all SIZE AIR TIGHT TINS and CASES for Export to Islands, Etc.



ELECTRICAL HERBAL & MASSAGE Institution

"Sunnyside," Lower Symonds St.

Prof. Max Gotch

SPECIALIST.
MALE AND FEMALE WEAKNESSES. CHILDREN'S COMPLAINTS. NEURAL, MUSCULAR AND DEFORMITIES.

RHEUMATISM, GOUT, SCIATICA, LIVER, KIDNEY AND BLADDER TROUBLES. DEAFNESS AND DISEASES OF THE THROAT AND EYE. ELECTRIC, HOT AIR, VAPOUR and MEDICATED BATHS.

Write for Prospectus. Gunnee Street, Wellington, November 16th.

Scarboro' Terrace, Wellington, August 18th, 1904.

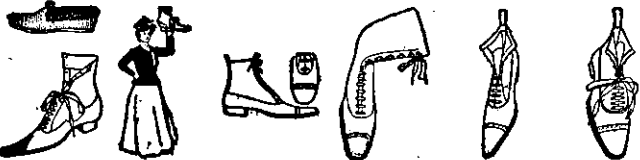
Prof. Max Gotch, Dear Sir,—I do not know how to express my gratitude for the wonderful transformation you have made in me, considering that only five months ago I was pronounced incurable and discharged from the Wellington Hospital, after being an inmate for two years. I am now thoroughly convinced that you have completely cured me of paralysis and acute rheumatism. You may use this testimonial as you wish; being well received from your treatment, and am most thankful to you for your kind care and attention to my case.

Signed—
Names given on application.

P.S.—I wish you every success in your future good work.

UPPER SYMONDS STREET BOOT & SHOE EMPORIUM

2 DOORS BELOW READ BROS., JEWELLERS SYMONDS STREET, AUCKLAND.



A. J. FERNANDEZ, MANUFACTURER.

DIRECT IMPORTER OF all Leading American, English and Foreign Footwear, which is constantly arriving; in addition to this a Heavy Stock of Colonial Brands, HAND-SEWN WORK A SPECIALTY.

Bespoke Work and Repairs Neatly and Promptly Executed. Don't miss our Gent's 10.6 Dress Boot—a Top Notcher. Great Variety of Athletic and Ward Footwear always in stock.

Our Motto: "RIGHT GOODS AT RIGHT PRICES."
Still leading the way with our "Julie Marlow"—Ladies' Light Leglet, Button or Lace, 15/6. Agent for the "Advance" and "Flexile" Well-known Brands of Footwear.

BRING YOUR REPAIRS.

Dr. SHERMAN'S Rupture Cure

Has been the salvation of thousands of sufferers whose outlook was gloom. No malady drags a man quicker to the depths of despair than Hernia. The truss (ancient and modern) only aggravates it.


DR. SHERMAN'S is the only Positive Cure.

It is born of medical experience and common sense. Nature is assisted—not outraged. It has cured cases of 40 years' standing.

Write for pamphlets—"A Warning and Guide to the Ruptured," and "Indisputable Testimony."

Mr. A. MARTIN is now visiting the centres of the Commonwealth. Letters addressed to
Mr. A. W. MARTIN, St. Aubyn's, 82, Hunter Street, Sydney, will receive immediate attention.

TWICE THE LIGHT. HALF THE COST.



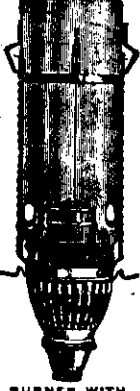
BLOCK LIGHT

Increases Light
Reduces Gas Bills

ONCE TRIED, ALWAYS USED

SOLE AGENT NORTH ISLAND N.Z.
C.J. HEMERY
STRAND ARCADE, AUCKLAND.

P.O. Box 564 Auckland
" " 607 Wellington
" " 512 Christchurch
" " 179 Napier
" " 172 Wanganui



BURNER WITH GAS REGULATOR AND AIR SHUTTER.

DURABLE
BRILLIANT
ECONOMICAL

W. F. FORD

BOOT and SHOE MANUFACTURER

88, Pitt Street, Auckland

Makes a speciality of
Bespoke Work

Settlers and people in the Country will do well to buy their Boots from FORD, who makes a speciality of country trade.

FORD'S BOOTS are as handsome as they are good

Because
The Material is always the best;

Because
the Making is in the hands of the best skilled and experienced workmen;

Because
the Boots themselves combine Quality, Style and Service in the highest degree.

Save Money
HAVE FORD MAKE YOUR BOOTS TO MEASURE.



AS HAND SOME AS THEY ARE GOOD



TUDEHOPE the Plumber

TELEPHONES—OFFICE, 208. PRIVATE RESIDENCE, 1415.

Is still carrying on business in **WELLESLEY STREET WEST, AUCKLAND** Three doors above Hill Street and continues to receive from customers evidences of their satisfaction with work done. Send your orders along and give him a trial: he will Guarantee Good Work at Reasonable Prices.
A **SPLENDID STOCK OF SANITARY WARE TO SELECT FROM.**

J. D. ROBERTS & CO., LIMITED

STANLEY STREET, AUCKLAND.

NEW MILK ARROWROOT A SPECIALITY.

MANUFACTURERS OF HIGHEST CLASS

Our Gum Goods beat all-comers
ENGLISH OR COLONIAL.

GOLD MEDALS NEW PLYMOUTH EXHIBITION, 1904-5



Biscuits and Confectionery

MUIR'S CAPITA

CURES
Headache, Neuralgia, Toothache and Influenza.

PRICE, POSTED FREE, 1s. per Dozen.
KARANGAHAPE ROAD, AUCKLAND.

W. FLOYD HARROP & CO.
AGENCIES: Reuter's Telegram Co., Ltd. North British and Mercantile (Fire) Insurance Co. Bovril Ltd. [ERNEST & MEDLEY, F.N.Z.A.A.]
RENTS, INTEREST AND OTHER SOURCES OF INCOME COLLECTED.
CORRESPONDENCE INVITED.
HOUSE, ESTATE, INSURANCE AND GENERAL AGENTS.
18, SHORTLAND ST., AUCKLAND, New Zealand.
We undertake the arrangement of Mortgages, the management of Estates for absentees, and Auditing.

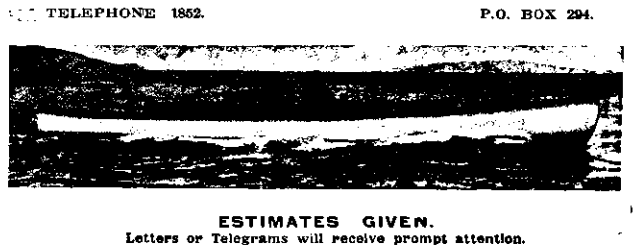
Bakers' Ovens, Ranges, Coppers, Chimneys Built and Repaired. Estimates Free.
Orders may be left at 204 VICTORIA ARCADE (2nd Floor).
COUNTRY ORDERS ATTENDED TO.
PRIVATE ADDRESS—KINGSLAND, AUCKLAND.

F. Ellisdon

Bricklayer and Builder.

Plugs to intimate to the public that, having a large staff of First-class Tradesmen, he is prepared to execute all kinds of
BRICKWORK, CONCRETING, DRAINING, TAR AND SANDING, ETC.
AT LOWEST POSSIBLE PRICES.

...THE...
MOTOR ENGINEERING COY.
General and Electrical Engineers,
All Makes in Oil and Gas Engines Repaired at shortest notice by experienced workmen.
Launches for Sale, new and second-hand, from 16 to 45 feet; also Marine and Stationary Oil Engines, Dynamos, Batteries, Etc.
CUSTOMS STREET WEST, AUCKLAND.



J. R. LINDSAY, MANAGER. TELEPHONE 1862. P.O. BOX 294.

ESTIMATES GIVEN.
Letters or Telegrams will receive prompt attention.

New Zealand Portland Cement Co.
Manufacturers of High-Grade Portland Cement, Hydraulic Lime, White Lime.



LOWEST RATES. **Ask for Crown Brand.** HIGHEST QUALITY
Unequaled for Foundations, Creameries, Floors, Sheep Dips, Buildings.
Our CROWN BRAND CEMENT has a World's Record.
NEW ZEALAND PORTLAND CEMENT CO.
78, VICTORIA ARCADE, AUCKLAND.
Send for Prices and Testimonials. H. R. COOK, Manager.

J. G. WARD, COMMISSION BROKER, IMPORTER, DEBT COLLECTOR, and GENERAL AGENT. WHOLESALE AND RETAIL FRUITERER & CONFECTIONER
ALSO THE AUSTRALASIA LABOUR BUREAU, FOR TOWN AND COUNTRY. 416 and 418, UPPER QUEEN STREET.

By Appointment to Their Excellencies
AUCKLAND STEAM LAUNDRY LIMITED HIGH-CLASS WORK A SPECIALTY.
THOS. WIGG, MANAGER. TELEPHONE 733. MODERATE CHARGES.
Upper Queen Street, Auckland Near St. Benedict's Church. *Curtain Dressing*

INGLIS & ORAMS, SANITARY WORK A SPECIALTY.
CERTIFICATED PLUMBERS,
RUTLAND STREET, AUCKLAND.
ESTIMATES GIVEN.
Original Makers of the Jewiss Patent Skylight.

S. J. AMBURY. J. AMBURY.
DEVONSHIRE AND REMUERA DAIRY.
Furnishers to His Excellency the Earl of Ranfurly.
TELEPHONE 453.

AMBURY, ENGLISH & CO., FARMERS, DAIRYMEN
PURVEYORS OF PURE, FRESH, PASTEURISED MILK.
BUTTER MANUFACTURERS and MILK CONTRACTORS.

OFFICE—KARANGAHAPE ROAD, Auckland, N.Z.
CENTRAL FACTORY—Freukton Junction
FARMS—Mangere, Parkhurst, and Waikato
CREAMERIES—Mangere, Waikato, Kapapa, Peka-panga, K. Tamaki, and Motituaia
BRANCHES—Ponsonby Road, Symonds Street, Hobson Street, North Shore, Parnell, Mt. Eden, and Jervois Road.
Exporters of Pure Separated Cream Butter in Tins, Boxes, and Kegs.

C. MUNROE EMANUEL, DENTAL SURGEON, SPECIALTY IN GOLD CROWN and BRIDGE WORK.
77, QUEEN STREET (over Smeeton's), AUCKLAND.
PAINLESS EXTRACTATIONS RECOMMENDED BY THE LEADING DOCTORS OF AUCKLAND.

G. A. HAYDON
ENGINEER
Albert Street - - Auckland



Steam, Gas, and Oil Engines. Wood-working
Machines, Dairy Machinery, Erected and Repaired
TURNING, SCREW-CUTTING, WHEEL-CUTTING, PLANING, IRON
and BRASS CASTINGS TO ORDER.

London Dental Institute RED LAMP,
Opposite HIS MAJESTY'S ARCADE,
QUEEN STREET, AUCKLAND.
W. D. PITTAR, DENTIST. Perfect Fit and Life-like Appearance Guaranteed.
Complete Sets from £3 3s.

ADVICE to those about to Marry **DON'T!!**

Until you have consulted
FRANK PARKES
Land Agent
and secured this.

He has some sweet things in HOUSE PROPERTY.

Frank Parkes LAND AGENT,
7, Vulcan Lane, Auckland

H. GILFILLAN,
F.I.A.N.Z. JUNR.
ACCOUNTANT

Companies' Secretary and Manager.

NEW ZEALAND INSURANCE BUILDINGS,
AUCKLAND, N.Z.

FRED. FURLEY
Junction of Pitt & Grey Sts., Auckland

**Paperhanger,
Painter,
Glazier**
GILDER,
PICTURE FRAMER, Etc.

Highest Quality Materials.
Highest Quality Labour.
Lowest Possible Charges.

White Lead, Oils, Varnishes, Window Glass, Wall
Papers, Scrims, Picture Mouldings, and all Trade
Requisites.

TELEPHONE 548.

Cheap and Reliable Boots.
Neat and Stylish Boots.

In fact, all sorts of Boots, Shoes, and Slippers are to be had at S. DONALDSON'S Cheap Boot Shop. Children's good Chrome School Boots from 8/11. Ladies' Chrome Boots from 9/6. Men's Chrome Boots from 10/6. A real good Sunday boot. Men's Bluchers from 8/6. A real good Ladies' High-top Grace Kid Boot made to order for 14/6. The Best Value to be had in Gent's Boots is our 21/- Grace Kid Pair, so Men and women to what you would pay 27/6 for elsewhere. Ladies' Felt Slippers from 1/0d. a pair.

Only One Address—
S. DONALDSON, KHYBER PASS,
Newmarket, Auckland.

For Hand Stand or Enlarging **Cameras** of Best Makers
Call or Write....

W. Park & Co.,
WELLESLEY STREET, AUCKLAND.

Plates, Papers, Post Cards,
Chemicals, Lamps, etc., AND ALL
PHOTO. REQUISITES.
LANTERNS & SLIDES.

CATALOGUES ON APPLICATION.

J. J. CRAIG, LIMITED
RAILWAY CARTAGE CONTRACTORS
Coal Contractors

Ship Owners,
Shipping and
Commission
Agents . . .

Brick, Lime, Cement and Pipe Manufacturers
(Next Bank of New Zealand)

Telephone 644 **QUEEN ST., AUCKLAND**

MANUFACTURERS of Ordinary Pressed Bricks, Red and Buff
Pressed Bricks, Limes—Hydraulic, Shell, Kocher—and Port-
land Cement; Pipes, Tiles, Fire-bricks, Fireclay; Sands—
Building and Asphalting.
ALSO ON SALE—Tar, Shells, Scoria; Coke—Greymouth,
Newcastle and Local; Fire-wood—Cut and Uncut; Coals—
Greymouth, Newcastle and Local.

Furniture Carefully Removed.

Telephone 1099.
DAVIES & DACRE,
Surgeon Dentists,
(Opposite Parnell and Renuera Tram Terminus),
TYRONE BUILDINGS, CUSTOM ST. EAST.

W. H. SOLOMON
L.D.S. (ENG.) DENTAL SURGEON
May be consulted at his Rooms
OVER MR. PARNHAM'S PHARMACY,
VICTORIA ROAD, DEVONPORT, AUCKLAND
Between the Hours of 9 a.m. and 9 p.m.

Arthur S. Gresham
DENTAL SURGEON
73, QUEEN ST., AUCKLAND
2 Doors below Smeeton's
Late of Dental Hospital, London, and University of Pennsylvania, U.S.A.

J. B. FIRTH
DENTAL SURGEON,
KARANGAHAPE ROAD, AUCKLAND.
(Over Bank of New Zealand.)
CHARGES MODERATE.

MR. A. L. SMITH,
Artificial Teeth Carefully Fitted. Old-established DENTIST
Corner Hobson Street, AUCKLAND
TELEPHONE 577. Opposite St. Matthew's Church.
CHARGES MODERATE. PAINLESS EXTRACTIONS.

R. M. WATT
ARCHITECT
216-217,
VICTORIA ARCADE AUCKLAND.

F. H. WILLIAMSON
BARRISTER, SOLICITOR,
ATTORNEY and COUNSELLOR-AT-LAW.
103, Victoria Arcade (1st floor), QUEEN STREET,
Telephone 1320. AUCKLAND, N.Z.
Money to Lend on Approved Security.

R. N. MOODY, LL.B.
Barrister and Solicitor
BANK OF NEW ZEALAND BUILDINGS
(First Floor) QUEEN ST., AUCKLAND, N.Z.

H. M. DENNES The Corner Shop for...
'New Home' 'Ruby'
'Standard'
'Royal'
and other makes of
Sewing Machines
Also, 'VICTOR' Talking Machines, Mangles, Frams, Go-carts, etc., at
lowest Prices. All Machines kept in order for Ten Years. Old machines
taken in exchange. A HANSOME PRESENT FREE TO EVERY
PURCHASER. Repairs a specialty.
SYMONDS STREET, AUCKLAND

ROSCOE REEVE,
BARRISTER & SOLICITOR
VULCAN CHAMBERS
(Corner of Queen Street and Vulcan Lane), AUCKLAND.
Money to Lend on Good Securities at a Low Rate of Interest.

HELL
CURE THAT CORN
Hath no fury like a woman's corn, and we don't wonder, for a little corn can cause more pain than the most even disposition can stand. If you are troubled with a corn, hard or soft, just try a box of
Waukenezie
and we will guarantee relief. 1s. per box.

J. HENDERSON Established 1860, High St. Auckland.
Painter, Glazier, Paperhanger,
Signwriter, Decorator, etc.
Telephone 1213. N.B.—The above executed at Moderate Charges.
Mixed Paints for House and Ship Use.
Special Black for School Boards. Estimates Furnished.

PONSONBY MEAT DEPOT
THREE LAMPS, AUCKLAND.
C. Norgrove, FIRST CLASS DAIRY FND FOKK.
Family and Pork Butcher.
Every Description of Small Goods Fresh Daily.

Waukenezie
and we will guarantee relief. 1s. per box.
R. W. PARKER, CHEMIST,
Queen Street, Auckland

CORNEATA, PINK CORN CURE
Safe, Painless, Effective. In large bottle, with brush, 1/-
A SURE CURE **MIGROL,** HEADACHES, NEURALGIA, ETC.
FOR ALL IN boxes, 1/- and 1/6 each.
WART EXTERMINATOR or VERRUCINE.
The only preparation that will Remove Warts Painlessly and
Permanently. In bottles, 1/6 each.
CHOCOLATE WORM TABLETS
Need no aperient. Children take them readily. In boxes,
1/- each.
A. S. J. LAMB, PHARMACEUTICAL CHEMIST,
100, KARANGAHAPE ROAD,
AND ALSO SYMONDS STREET, AUCKLAND.

JAS. JAMIESON Established 1842. Telephone 253.
UNDERTAKER and ENBALMER,
UPPER QUEEN ST., AUCKLAND



Ladies and Gentlemen—WE CORDIALLY INVITE YOU TO INSPECT
OUR NEW STOCKS OF
English, American and Colonial



EVERYTHING that you require in FOOTWEAR at the
Boots and Shoes

BRITISH AND AMERICAN SHOE STORES

Wellesley Street, Auckland (Opp. Public Library) **JAMES ADAMS & CO.**

HYGIEO BREAD
wrapped in Waxed Paper, and made only at the
HYGIENIC BAKERY.
This Bread is Patented and the name registered
"HYGIEO."

HYGIENIC BAKERY
Auckland
PONSONBY ROAD, QUEEN STREET,
NEWTON, VICTORIA STREET,
And at DEVONPORT.
JOHN C. LEGG,
PROPRIETOR.
TELEPHONES 1318, 1701, 1482.

CHRISTMAS ? ? CAKES
CHRISTMAS DAINTIES
in Great Variety.
You need good health, then eat
HYGIEO BREAD
and
HYGIEO BISCUITS.

W. M. PRITCHARD

Boot and Shoe Manufacturer

PRITCHARD'S BESPOKE WORK
is the Perfection of the Bootmaker's Art.

VICTORIA STREET,
AUCKLAND.

ESTABLISHED 1884.

Patentee of the **ASBESTOS HEAT-RESISTING AND WATER-TIGHT BOOT**
Sole Agent for **DR. HÖGGER'S HYGIENIC ASBESTOS SOLES**
WORKING MEN, if you study your health, wear only PRITCHARD'S ASBESTOS WATER-TIGHT AND HEAT-RESISTING BOOT; your feet will always be dry.
ONLY ADDRESS—PARAGON BOOT SHOP
VICTORIA ST., AUCKLAND

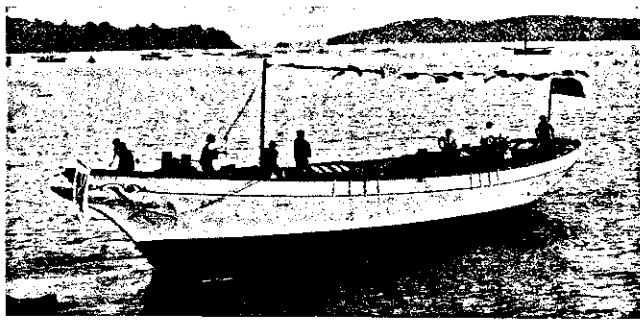
CHARLES BAILEY, JUNR. SHIP, YACHT AND BOAT BUILDER AND DESIGNER.

C. BAILEY, JUNR., has the reputation of being one of the best Designers and Builders in the Colonies, and has received the highest Testimonials. He GUARANTEES faithful work and good finish and design.

Letter Received from
Sir Rupert M. Clarke.

MELBOURNE, Feb. 2nd, 1904.

DEAR MR. BAILEY,
I write to say that I am very much pleased with 'La Carabine,' which behaved splendidly on her way over from Auckland to Melbourne, as you will see from enclosed copy of the log, which I send for you to retain. I am more pleased with her every day I see her.
Yours very truly,
RUPERT M. CLARKE.



LAUNCH OF "LA CARABINE."

SCHOONER YACHT

"La Carabine"
Auckland,
August 18, 1903.

In the course of an interview with our representative on Monday afternoon, Sir Rupert Clarke said: "I am more than pleased with the appearance of the yacht, and the manner in which the work is being carried out. I had no idea, though, that you had such beautiful timber in New Zealand; and I know something about that material, too, for I have done a good deal of business with sawmills in New South Wales. I have, however, never seen such beautiful timber as I saw in my visit to the shippers to-day. When I had the designs of the yacht which I intended to build sent to me, they came from all parts of the world, and on my visit to Britain I had a good look around the shipyards, but saw nothing to equal the designs as submitted by Mr. Bailey, and I therefore accepted his contract. There was no favoritism in the matter at all, and I think it is a feather in Auckland's cap that she could compete with the outside world in the matter."—*New Zealand Herald.*

Designer and Builder of Champion Yachts:

36ft. "Bona," 30ft. "Meteor," 25 "Thelma," 1-rater "Laurel," "Ida," "Rangatira," "Speedwell," "Cooya," and many others.

Orders for Yachts, Steam or Oil Launches, Boats, etc., promptly executed. Ships' Wheels, Blocks, Belaying Pins, Dead-eyes, etc., on Stock or Repaired.

ESTIMATES AND DESIGNS ON APPLICATION.

STEAMERS—
S.S. "ROB ROY," S.S. "GAEL," S.S. "HIRERIK," S.S. "OREWA," S.S. "PRESTO," Ferry S.S. "ALBATROSS," and U.S.S. Co.'s "TUATEA."

OIL LAUNCHES—
"QUEEN OF BEAUTY," "PRESTO," "NAOMI" No. 1 and 2, "ELISE EVANS," "UNION," "TOKATEA," "MILKMAID," and others too numerous to mention, and has lately completed the handsome Schooner Yacht, "La Carabine," to the order of Sir Rupert Clarke, Melbourne.

CUSTOMS STREET WEST, AUCKLAND.

KIRKMAN & DENISON		98, QUEEN STREET, AUCKLAND.		KIRKMAN & DENISON				
<p>THE CHRISTMAS SPIRIT.</p> <p align="center">SUGGESTIONS</p> <p align="center">for the Christmas Stockings</p>			<p>FOR MOTHER MOTHER LOVE CANNOT BE REPAID—IT CAN BE APPRECIATED—</p> <ul style="list-style-type: none"> Muff Chains, Gold, from . . . 45/- Purses, Silver-mounted, from . . . 7/8 Serviette Rings, Silver-mtd., from . . . 4/8 Brooches, Gold, from . . . 4/8 Manicure Sets, Silver-mtd., from . . . 3/6 Spectacle Cases, Silver-mtd., from . . . 18/6 Salts Bottles, Silver-mtd., from . . . 3/6 Afternoon Teaspoons, Electro-plated, 1/2 dozen, in case, from . . . 8/6 Tea Pots, Electro-plated, from . . . 12/6 Tea Sets, Electro-plated, from . . . 35/- 		<p>FOR SISTER YOUR SISTER—AND ANOTHER—</p> <ul style="list-style-type: none"> Brooches, Gold, from . . . 4/6 Necklets, Gold, from . . . 12/6 Watches, Gold, from . . . 60/- Muff Chains, Gold, from . . . 45/- Bangles, Curb, Gold, from . . . 40/- Photo Pendants, Gold, from . . . 8/6 Hair Brushes, Silver-mtd., from . . . 12/6 Scarf Bottles, Silver-mtd., from . . . 3/6 Thimbles, Silver, from . . . 1/6 Pin Trays, Silver, from . . . 2/6 Jewel Cases, from . . . 20/- Greenstone Hearts, from . . . 3/6 		<p>FOR WIFE DON'T FORGET THINGS REALLY FOR HER—NOT GENERALITIES—</p> <ul style="list-style-type: none"> Dress Rings, Gold, from . . . 12/6 Brooches, Gold, from . . . 4/6 Tea Sets, from . . . 35/- Opera Glasses, from . . . 20/- Monique Sets, Silver, from . . . 30/- Belts, Electro-plated, from . . . 6/6 Serviette Rings, Silver, from . . . 4/6 Photo Pendants, Gold, from . . . 6/6 Brushes, Silver-mounted, from . . . 12/6 Jewel Cases, from . . . 20/- Tea Pots, Electro-plated, from . . . 12/6 	
<p>FOR FATHER IT'S HARD TO TELL WHAT TO GIVE—HERE ARE HELPS—</p> <ul style="list-style-type: none"> Smoking Sets, Silver-mtd., from . . . 12/6 Shaving Sets, Silver-mtd., from . . . 30/- Wallets, Silver-mounted, from . . . 8/6 Card Cases, Silver-mounted, from . . . 12/6 Military Brushes, Silver-mtd., from . . . 7/8 Shaving Mugs, Electro-plated, from . . . 21/- Matchboxes, Silver, from . . . 7/6 Sovereign Cases, Silver, from . . . 9/6 Serviette Rings, Silver, from . . . 4/6 Walking Sticks, Silver-mtd., from . . . 6/6 			<p>FOR BROTHER AND OTHER BROTHERS—</p> <ul style="list-style-type: none"> Ribbon Alberts, Gold, from . . . 25/- Cloth Brushes, Silver-mtd., from . . . 7/6 Soap Boxes, Silver-mtd., from . . . 3/6 Matchboxes, Silver, from . . . 7/6 Cigarette Cases, Silver-mtd., from . . . 12/6 Cigar Cutters, Silver, from . . . 18/6 Sovereign Cases, Silver, from . . . 9/6 Serviette Rings, Silver, from . . . 4/6 Shaving Brushes, Silver-mounted, from . . . 7/6 Tie Clips, Gold, from . . . 7/6 Links, Gold, from . . . 10/8 		<p>FOR HUSBAND INTIMATE COMFORT-GIVING GIFTS—</p> <ul style="list-style-type: none"> Smokers' Sets, Silver-mtd., from . . . 12/6 Field Glasses, from . . . 20/- Flasks, Electro-plated, from . . . 8/6 Shaving Mugs, Electro-plated, from . . . 21/- Serviette Rings, Silver, from . . . 4/6 Locketts, Gold, from . . . 20/- Engwells, Silver-mounted, from . . . 3/6 Calendar, Silver-mounted, from . . . 12/6 Scarf Pins, Gold, from . . . 4/6 Studs, Gold, from . . . 3/6 Ribbon Alberts, Gold, from . . . 25/- Knife Kests, Electro-plated, from . . . 6/6 			
KIRKMAN & DENISON		98, QUEEN STREET, AUCKLAND.		KIRKMAN & DENISON				

Auckland Savings Bank.

ESTABLISHED 1847

Amount at Credit of 33,713 Depositors on January 1, 1905:
£902,765 8 10
 Reserved Profits:
£74,867 2 0

President: HIS EXCELLENCY THE GOVERNOR. Vice-President: T. CHING, ESQ.
 Manager: R. CAMERON.

BRANCHES.
 Mairangi Road, NEWMARKET.
 Ponsonby Road, GREY LYNN.
 Queen Street, ONEHUNGA.
 Victoria Road, DEVONPORT.

HEAD OFFICE:
QUEEN STREET, AUCKLAND.

Deposits of One Shilling and upwards are received. Interest allowed at the rate of 4 per cent. per annum up to £100.

Do all your Business with
SIMMONDS & SPRAGG

They SELL HOUSES FURNISH HOUSES
 and AUCTION YOUR FURNITURE when you require.

Simmonds & Spragg

House Furnishers,
 Auctioneers,
 House and Land Agents

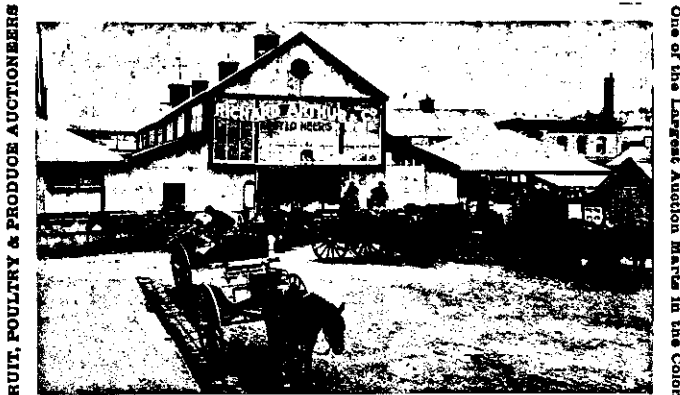
Karangahape Road, Auckland

HOUSES TO LET.
 FARMS FOR SALE.

'Phone 666.

Richard Arthur & Co.

Established 1889.



CITY MARKET ** AUCKLAND

FRUIT, POULTRY & PRODUCE AUCTIONEERS

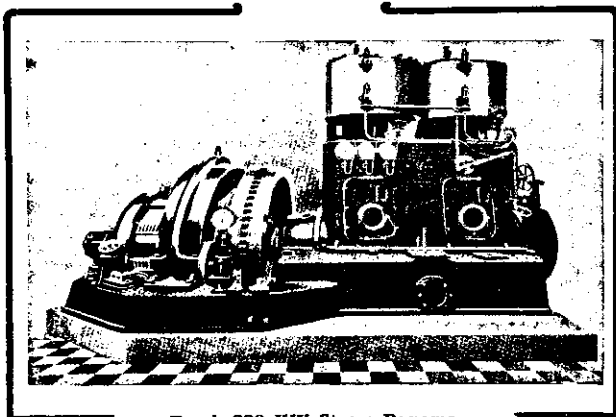
One of the Largest Auction Marts in the Colony

Standard

Insurance Company of New Zealand.

G. JOHNSTON, Manager, QUEEN ST., AUCKLAND.

FIRE, MARINE, GUARANTEE RISKS accepted at the Lowest Current Rates.
 MARINE LOSSES MADE PAYABLE AT ANY OF THE COMPANY'S BRANCHES.



Brush 200 KW Steam Dynamo.

Steuart & Fenn, Ltd.

Sole Agents

BRUSH ELECTRIC COY.
 BRITISH INSULATED and
 HELSBY CABLES, Ltd.
 NERNST ELECTRIC
 LIGHT, Ltd.

Contract for
 Every Description
 of.....

**Electrical Work
 and Supplies....**

Auckland, Dunedin and
 Hawera.

D'ARCY HAMILTON.

AUSTIN WALSH.

Austin Walsh & Co.

(IN FUMO PAX)

(Resurrected)

**SUPPORT US, and it will pay
 you**
 NOT ONLY NOW, BUT IN THE FUTURE.
BECAUSE

WHILE THERE IS A TOBACCO FACTORY IN
 NEW ZEALAND NO TRUST COMPANY CAN PUT
 UP YOUR SMOKERS TO A PROHIBITIVE PRICE.

REMEMBER—If you smoke, you want to enjoy your weed, and you will be
 pleased to know that all the best brands of AUSTIN WALSH & CO. can again be
 had from us.

These we manufacture from the choicest selected leaf grown in Carolina,
 Virginia, Havana and Fiji.

FOR CIGARETTES WE RECOMMEND

**Golden Fleece (Mild)
 Virginia Returns (Medium)
 Old Virginia (Full Flavour)**

FOR PIPE OR CIGARETTE—

Sokol (Medium)



TOURIST WHIFFS

FOR PIPE—

Golden Honey Dew

Blair's Blended Mixture
Gold Crown Mixture

In CIGARS we can distance easily the imported article
 in Quality, Aroma and Price. Our

Atlas Rothschild is unequalled

Our other lines are all exceptional quality and value, from
 7/- a hundred upwards.

The new **Suavitos**

are strongly recommended by the Medical Faculty, as no
 paper enters into their composition. A charming extra-cute
 smoke.

Tourist Whiffs

are so popular that it is needless to say much. They are a
 little less than a cigar, a little more than a cigarette, yet
 your heart's desire, and all tobacco, no paper.
 If your Tobacconist is so much left to himself as not to stock
 our lines, so much the worse for him.
 Send Postal Note or P.O.O. for 6/6 and get a 1lb. Sample Tin
 of any of our Tobaccos, or 8/6 will get you 5lbs. (assorted if
 required) post free. 16/6 will make you the happy possessor
 of a box containing 50 choice Atlas Rothschild's Cigars, or
 100 Suavitos for 10/-, or 24 packets Tourist Whiffs, with
 special photo., for 10/-

ADDRESS—

AUSTIN WALSH and CO.
 ATLAS BONDED FACTORY, AUCKLAND.



S. John's Collegiate School

"THE PAH"

A BOARDING AND DAY SCHOOL FOR BOYS.

"THE PAH" is a Veritable Sanatorium for those Island and Australian boys who need a cooler climate. The school is furnished with the following—A large Gymnasium fitted with all necessary apparatus, a well-equipped Workshop, an Armoury for the use of the Cadet Corps, spacious Playing Fields and Football Ground, Tennis Lawns, Sitting Room and Library for Boarders. The class-rooms are built in accordance with modern educational requirements.

The Pah Estate occupies a beautiful and commanding position near Onehunga. The soil is volcanic, the aspect sunny, and the view extensive. The house is large and well appointed. The school grounds include an area of fifty acres.

Illustrated Prospectus, giving full information, on application to the Headmaster.

HEADMASTER:

REV. P. S. SMALLFIELD,

Assisted by a Competent staff of Resident and Visiting Masters.

NEAR ONEHUNGA, AUCKLAND.

LOGAN BROS.

Designers and Builders of STEAM and SAILING YACHTS, OIL LAUNCHES, Etc. RAILWAY WHARF, AUCKLAND, N. Z.

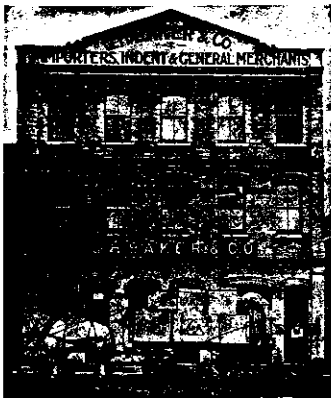


TUNNEL BOATS FOR RIVER USE BUILT TO ANY DRAUGHT REQUIRED.



RACING YACHTS AND SPEED LAUNCHES A SPECIALITY.

BOATS BUILT UNDER COVER UP TO EIGHTY FEET.



G.H. BAKER & CO.
IMPORTERS, INDENT AND GENERAL MERCHANTS.

Importers of
PIANOS FANCY GOODS
JEWELLERY BRUSHWARE
SPORTING GOODS
PHOTOGRAPHIC GOODS
PIPES CIGARS
GROCERIES and GENERAL MERCHANDISE.

THE TRADE ONLY SUPPLIED

Commerce St., Auckland

Country Correspondence especially invited.



Speed Launch "SLIM JIM," 30 feet by 5 feet, 15 h.p., Monarch Engine, speed over 15 miles per hour, designed and built by

T. M. LANE & SONS

Ship, Yacht, Launch Builders and Designers

Designers and Builders of Auxiliary Schooner "Countess of Ranfurly" built for the N.Z. Government, and sister-ship "Samoa," Auxiliary Schooners "Kaua," "Aotea," "Greyhound" and others.

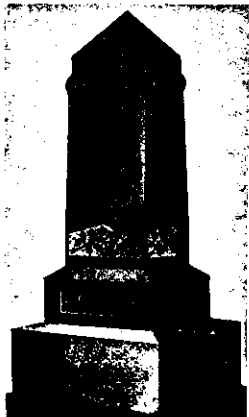
OIL LAUNCHES ON SALE AND BUILT TO ORDER. Estimates and Designs on Application.

Sole Agents for the MONARCH OIL ENGINE

From 1 1/2 h.p. up to 150 h.p. (2 and 4 cycle)

MOTOR LAUNCHES A SPECIALITY.

KING'S DRIVE, AUCKLAND, and TOTARA NORTH



W. THOMAS.

S. THOMAS

W. THOMAS

Monumental, Marble, Granite, and Stone Mason

Have in Stock a Large and varied Selection of MONUMENTS, CROSSES, and HEADSTONES in Marble and Granite. We make a Speciality of the finish of all Work entrusted to us. New Goods arriving very frequently.

Corner Victoria and Lorne Streets East, Auckland

Our Letter Cutting and Carving are unsurpassed. A great variety of TOMB RAILINGS in Cast and Wrought Iron. INSPECTION INVITED and fullest information on all matters connected with Cemetery work given.

TELEPHONE 712.

Chas. Smith

PRACTICAL

Perambulator, Go-Cart, and Invalid Carriage Maker.



Cash or Time Payments.

Send for Free Catalogue.

PERAMBULATORS OF ANY MAKE REPAIRED OR TAKEN IN EXCHANGE.

NOTE THE ADDRESS—

QUEEN ST., Auckland

OPPOSITE TONSON GARLICK CO.

A Christmas Gift.



Every Purchaser of 2 lbs. of our Far-famed
ST. GEORGE JAM
gets a Complete Fruit Preserving Jar FREE.

THE VERY THING FOR THE APPROACHING FRUIT SEASON.

ASK FOR **ST. GEORGE JAM**
In the Patent Glass Jar, at Your Grocers.

IRVINE & STEVENSON Ltd.
W. I. McCALLUM, Manager. 51 FORT ST., AUCKLAND. TELEPHONE 1850

For High-class Goods try **PRINCE** Manufacturing Jeweller and Watchmaker

Our Goods come Direct from the Manufacturers.



GOLD-MOUNTED SILK GUARDS—9 ct. Gold, 27s. 6d.; 15 ct. Gold, 37s. 6d.

Special Value in Rings (REAL STONE)



P-18 ct. gold, £22 5/- P6-18 ct. gold, £23 2/6
P7-18 ct. gold, £21 17/6 P8-18 ct. gold, £21 12/6

JAS. PRINCE
THE PEOPLE'S JEWELLER

QUEEN ST., AUCKLAND
OPPOSITE "HERALD" OFFICE.

CORRESPONDENCE INVITED.



P3-Sapphire, or Ruby and Diamond. 9 ct. gold, £1 7s. 6d.

Gold Brooches



P4-Rubies, Sapphires and Diamond. 9 ct. gold, £1 6s. 6d.



P2-Sapphire, or Ruby and Diamond. 15 ct. gold, £1 18s. 6d.



P1-Ruby or Diamond. 15 ct. gold, £1 5s.

Hoiland Bros. & Gillett

Engineers and Importers,
MECHANICS' BAY, AUCKLAND

MOTOR CAR AND LAUNCH WORK A SPECIALTY.

ALL BRANCHES ENGINEERING WORK UNDERTAKEN.

CORRESPONDENCE INVITED.

"ZEALANDIA" MOTOR LAUNCH ENGINES

AGENTS

"GARDNER" ENGINES STATIONARY AND MARINE

AGENTS

"ARGYLL" MOTOR CARS.

"STAR" MOTOR CARS.

Lichtenstein, Arnoldson & Co.,

Kauri Gum & General Merchants
FORT STREET, AUCKLAND.

Cash Buyers of Kauri Gum. Importers of English, American, and Continental Boots and Shoes, Leathers, Laces, Polishes, Rubber Heels, Bootmakers' Requisites, etc., etc.
Represented at London, New York, and Hamburg

Bankers: The Bank of Australasia

ASK FOR

NICHOLLS' Aerated Waters.



A. C. SCOTT & CO.,
Proprietors,
PONSONBY ROAD, AUCKLAND.
'Phone 1059.

SANFORD, LIMITED

A. SANFORD, Managing Director.

Fresh Fish packed in Ice, or Frozen, forwarded to all parts of the world.

WHOLESALE & RETAIL FISH AND OYSTER MERCHANTS.

Sanford's Fish Market Op. Custom House, Auckland and at Thames, N.Z.

Telephone-Retail Market, 658. Currier's Factory, 790. Private Residence, 309. P.O. Box 443.



REGISTERED

TRADE MARK.

FRESH FISH DAILY from Steam Trawlers.

MASEFIELD & CO.,

ENGINEERS, IRON AND BRASS FOUNDERS, **Albert Iron Foundry, AUCKLAND.**

CONSIGNMENTS HAVE OUR SPECIAL ATTENTION.

The Devonport Steam Ferry Co., Ltd.

Telephone 246.

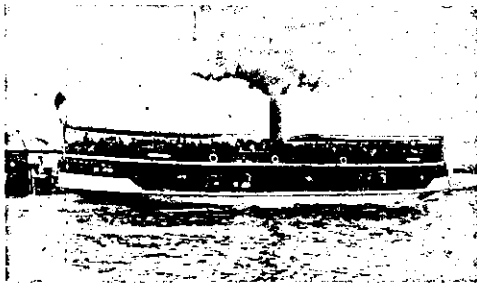
FERRY SERVICES to Devonport, Stanley Bay, Northcote, Birkenhead and Chelsea Districts. Steamers leave at short intervals daily from 6.30 a.m. to 11.40 p.m.

ALL-NIGHT SERVICE to Devonport. DAILY STEAM SERVICE to St. Helier's Bay. WEEKLY STEAM SERVICE to Motutapu Island (every Sunday at 9 a.m.).

FARES.

Day Return, 6d.; Single, 4d.; Children, 3d. Family Annual Ticket—Devonport, 4s.; Northcote, etc., 4s. Single Annual Ticket—Devonport, 2s.; Northcote, etc., 2s. Weekly Tickets—Family, 4s.; Children, 2s.; Lady's, 1s.; Apprentices and School Children's, 1s. Cards of 21 Single Tickets, 4s.

EXCURSIONS on all holidays to Lake Takapuna, St. Helier's Bay, Mangitoto, Pine Island, etc.



The Cheapest and Most Efficient Ferry Service in the Colony.

ALEX. ALISON, Manager.

TOWAGE of all descriptions done at reasonable rates. Steam Tugs S.S. "Pelican" (twin screw), P.S. "Awarua," S.S. "Durham," S.S. "Kestrel" (twin screw).

STEAMERS ON HIRE for excursions of all descriptions at moderate rates. Steamers and Steam Launches for cruising and extended trips. Comfortable Cabins, etc.

H. LEADBEATER CUTLER SHEFFIELD HOUSE



HENRY LEADBEATER PRACTICAL GRINDER & CUTTER

Importer of Best Sheffield Cutlery. All kinds of Cutlery repaired equal to new. Knives Re-Bladed. Horse Clippers sharpened.

Sole Agent for The British Machine Co.'s Cash Register. The Cheapest and Best on the Market.

16, WAKEFIELD ST., AUCKLAND.

Important to Ladies.

as to iron a pinafore. Dusted on the surface, and the article ironed in the usual way, we guarantee a brilliant result will be certain and satisfactory. "ALEX. BAGLEY'S" Laundry Glaze has revolutionized shirt polishing. The girl who takes her first lessons in the laundry art to day, experiences few of the failures that characterized her mother's first attempts. She can polish shirts without trouble. She doesn't need to rub hard. She can dress linens in one-third the time as of formerly. "ALEX. BAGLEY'S" Laundry Glaze MAKES SHIRT SHINING EASY. "ALEX. BAGLEY'S" Laundry Glaze is kind to women, and is also kind to starched linens. It contains nothing of an injurious nature, and so can be used on the finest fabrics. "ALEX. BAGLEY'S" Laundry Glaze is the first and best aid to thrifty housewives who must do ironing. When ordering from your dealer, particularly specify "ALEX. BAGLEY'S"—the Original Laundry Glaze. By so doing you get quality as well as quantity. If your grocer or storekeeper doesn't stock it, ask him to procure it for you.

You don't have to send shirts, cuffs and collars to the laundry. You can do better ironing at home at one-tenth the expense, and be sure that the materials will not be injured by potent starches, hard rubbing, or machine-ironing. It's as easy to polish starched linens with "ALEX. BAGLEY'S" Laundry Glaze as to iron a pinafore. Dusted on the surface, and the article ironed in the usual way, we guarantee a brilliant result will be certain and satisfactory. "ALEX. BAGLEY'S" Laundry Glaze has revolutionized shirt polishing. The girl who takes her first lessons in the laundry art to day, experiences few of the failures that characterized her mother's first attempts. She can polish shirts without trouble. She doesn't need to rub hard. She can dress linens in one-third the time as of formerly. "ALEX. BAGLEY'S" Laundry Glaze MAKES SHIRT SHINING EASY. "ALEX. BAGLEY'S" Laundry Glaze is kind to women, and is also kind to starched linens. It contains nothing of an injurious nature, and so can be used on the finest fabrics. "ALEX. BAGLEY'S" Laundry Glaze is the first and best aid to thrifty housewives who must do ironing. When ordering from your dealer, particularly specify "ALEX. BAGLEY'S"—the Original Laundry Glaze. By so doing you get quality as well as quantity. If your grocer or storekeeper doesn't stock it, ask him to procure it for you.

PACKETS, -/6 AND 1/-.

1/- PACKETS LAST A LONG TIME.

MANUFACTURED SOLELY BY ALEX. BAGLEY, CHEMIST, 4, GEORGE STREET, DUNEDIN.

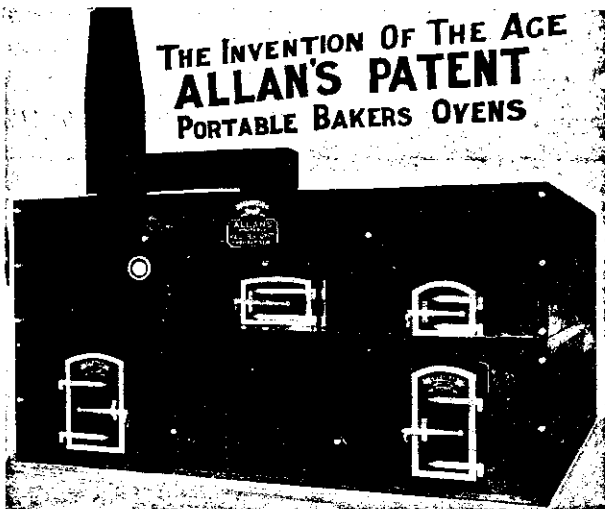
CUT OUT.

Send this COUPON with your name and address, and you will receive a Free Sample of "Alex. Bagley's" Laundry Glaze.

Cut this out and post it now while you think of it.

No Suther.

ALEX. BAGLEY,
Chemist,
4, GEORGE STREET
DUNEDIN, N.Z.



THE INVENTION OF THE AGE
ALLAN'S PATENT
PORTABLE BAKERS OVENS

A Boon to Bakers

THE INVENTION
OF THE AGE.....

Copy of Testimonial from Mr. J. C. Legg, Caterer at the New Plymouth Exhibition.

Hygienic Bakery,
Ponsonby Road, Auckland,
January 26th, 1905.

Mr. C. F. F. ALLAN,
Lorne Street, Auckland.

Dear Sir,—

I wish to convey to you my appreciation of your Patent Portable Oven. During my duties as caterer at the New Plymouth Exhibition we served over 20,000 (twenty thousand) meals, also supplied refreshment counter with small goods, made all the bread and rolls consumed in the Exhibition, all cooked and baked in one of your Portable Ovens. It did its work splendidly, everything being baked to perfection, everyone was pleased with it.

I can strongly recommend the oven to any baker, and any enquiries respecting same will be cheerfully answered, as I consider its good qualities should be known. It consumes less fuel and retains the heat longer than a brick oven.—Faithfully yours,
JOHN C. LEGG.

NO MORE CRACKING NO MORE COLLAPSING
NO MORE UNEVEN SOLES

WORKS ON LESS THAN HALF amount
of Fuel consumed in Brick Ovens.

ALLAN'S
Patent Portable Bakers' Oven

Awarded Gold Medal at New Plymouth Exhibition, 1905.

No Brickwork Setting. Quite Portable. Easily Erected or Removed.
Cleaner, More Durable, and Gives Better Results than Brick Ovens.
Send for Catalogue and Testimonials.

C. F. F. Allan, Sole Maker and Patentee
Unbreakable Steel-Range Manufacturer
and General Ironworker.

LORNE STREET, AUCKLAND, N.Z.

THERE IS NOTHING TO EQUAL

Boyd's Violetta Toilet Soap

For
the
Hair.

It is a Perfect Toilet Soap, contains no chemicals, and it renders the skin soft and beautiful, as well as improving the complexion.

It is specially recommended by Physicians for the Hair, and for general Toilet use will be found both economical and luxurious.



RECOMMENDED AND USED
BY ALL GOOD NURSES.

WIVES & MOTHERS

SHOULD ALWAYS HAVE READY TO HAND

A GOOD SUPPLY OF

HOLLOWAYS

PILLS & Ointment

THE PILLS are a safe, reliable remedy for Headache, Biliousness, Feverish Attacks, Jaundice. Giddiness and other ailments proceeding from a disordered Liver and Stomach. They cleanse the Blood and invigorate the System.

THE OINTMENT is a real boon to sufferers from Old Wounds, Bad Legs, Sores, Boils, Abscesses, Poisoned Cuts, and Skin Affections in all forms.

SIDNEY J. NATHAN.

Cable Address—"LUCIFER," Auckland.
ABC, A1 and Western Union Telegraphic Codes used.

CHARLES I. NATHAN.
LOUIS M. NATHAN.

ARTHUR H. NATHAN

**IMPORTERS
OF**

Teas, Tobaccos, Cigars, Wines, Spirits, Oilmen's Stores, Dried Fruits, Matches, Rice, Jute Goods, Eastern, American, and General Merchandise. Kauri Gum Brokers. Buyers of Fungus, Beeswax, Honey, Eggs, Butter, Malze, etc., at the Best Current Market Rates.

Warehouse and Offices:
CUSTOMS ST. WEST
Bonded Stores: ALBERT ST.

AUCKLAND, N.Z.

London Office: 9 NEW BROAD ST., E.C.

Factory and Tea Warehouse:
CUSTOMS ST. EAST
Gum Store: LITTLE QUEEN ST.

Agents for NEW ZEALAND AND AFRICAN S.S. CO., LTD. ——— AMERICAN AND AUSTRALIAN STEAMSHIP LINE.

ARTHUR NATHAN'S "RELIABLE" TEAS



The Perfection of Fragrance.

Packed in full-weight air-tight lead packets, which preserve the full strength and delicious aroma.

FRESH Canned Mullet

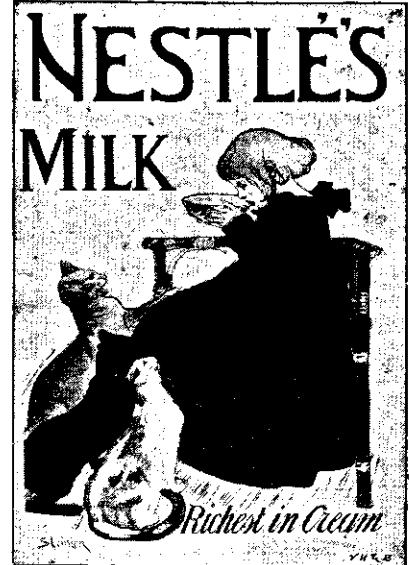
Registered Brand—"PENGUIN."

Packed by the PURERUA
PACKING CO., PURERUA,
BAY OF ISLANDS.

Large Sale throughout the Colony,
Australia and South Sea Islands

**FIRST AWARD
AT THE
AUCKLAND
EXHIBITION.**

W. C. MOUNTAIN, Manager.
ARTHUR H. NATHAN, Auckland Agent.



UPWARDS OF TWENTY MEDALS
AWARDED FOR EXCELLENCE.

**One Quality Only—
The BEST!**

ANDREW USHER & CO.'S

IN THE FRONT RANK!

SPECIAL RESERVE

O.V.G.

Old Vatted
Glenlivet

ON SALE THROUGHOUT
THE COLONY.

WHISKY.

WARD'S

BOTTLED IN
CHRISTCHURCH.

... ALE & STOUT.

AUCKLAND AGENTS—ARTHUR H. NATHAN.

The
Finest Dutch
Cocoa in the
World.

**"BAHIA"
COCOA.**

COCOA & CHOCOLATE CO., LTD.

143, York Road,
Camden Road,
LONDON.

Agents: ARTHUR H. NATHAN

NESTLÉ'S FOOD

FOR INFANTS & INVALIDS

A PERFECT SUBSTITUTE FOR MOTHER'S MILK

**THE GEAR
Meat Preserving and
Freezing Company of
New Zealand, Ltd.**

By Royal Letters Patent



By Special Appointment to
H. R. H. the Duke of Edinburgh
His Excellency the Governor
And the late Governors of N.Z.
Contractors to the Admiralty.

MANUFACTURERS OF
CANNED MEATS, SOUPS,
POTTED PASTES,
EXTRACT OF MEAT, OILS,
MANURES, ETC., ETC.

THE LARGEST MEAT PRESERVERS
AND EXPORTERS IN NEW
ZEALAND.

HUTCHINSON BROS. The PEOPLE'S GROCERS	Time Saved by using Crown Brand Goods	Happy Memories made by using Crown Groceries	Importers of Groceries, Enamel-ware, Glassware, etc., etc.	No effort spared to give Complete Satisfaction	Success which has Drawn our Export	Orders which we Receive and Dispatch with Promptitude	Now is the Time to Begin Dealing with us	WE ARE STRAIGHT FOR YOUR TRADE. our Specialities	Baking Powder one of our Specialities	Ring up Telephone 778	Often Copied Never Excelling	Sincerely Yours HUTCHINSON BROS.
Grocers, PONSONBY ROAD, Corner Summer Street, Auckland.												



**"Banzai"
"Banzai"**
(PATENTED).
IMPROVED
JAPANESE
**Toothache
Drops.**
A SURE CURE FOR
TOOTHACHE.
Price: 1/- per bottle

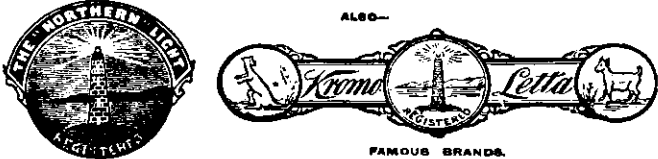
Wm. ROBINS, CHEMIST and DRUGGIST,
330, Queen Street, Auckland.
(OPPOSITE CITY MARKET.)

**Now then—
Who said
Scones?**

If you are not already handling our Flour,
there is no reason why you cannot do so.
We are entirely free from any Trust.

**BYCROFT, LTD.,
AUCKLAND.**

Progressive Boot Manufacture



EVERY PAIR
GUARANTEED
SOLID LEATHER

Finest Footwear
MADE FROM
Finest Leathers

**THE NORTHERN BOOT and
SHOE Mfg. Co., Ltd.**

Office, Warehouse & Factory, Hobson Street, Auckland
THOMAS HODGSON, Manager and Secretary.

**TOUPEES
and WIGS**
are just the thing for
BALDNESS.
Transformations
cover gray
and streaked Hair.
Switches
Guaranteed best
quality & lowest prices
Natural Wavy Pompadour.

RANDOLPH EAGLETON, 200, Queen St., Auckland

Don't Waste any more Money on Rent!

*Become your
own Landlord.*

**WE'LL BUILD
YOU A HOUSE
TO YOUR OWN
DESIGN**

Small Deposit,
balance in
Weekly
Payments until
all is paid.

If you desire to
Buy or Sell an
Allotment,
House, Farm or
Business, call or
write to us.

Burlton 'Bennett & Co.
LAND, ESTATE and GENERAL COMMISSION AGENTS,
MARKET SQUARE, ELLIOTT STREET, AUCKLAND.
Box 590 Reference—The Bank of Australasia. Phone 1040



**A. S. Streeter
High-Class TAILOR**

Holder of a Diploma from
THE COLLEGE OF CUTTING,
4, Gerrard Street, London.

Customers can select from a large stock of
**Serges, Worstedes,
Coatings, Vicunas,
English Tweeds,
Scotch Tweeds,
Irish Tweeds,
New Zealand Tweeds**

All Orders with which I may be favoured
will be executed under my personal
supervision, and perfect satisfaction
guaranteed.

A TRIAL SOLICITED.

PONSONBY ROAD, AUCKLAND
Opposite Western Park.

BUY ———

**A. J. Graham & Co.'s
PURE TEAS**

A GIANT in Value
And a PIGMY in Price,
A blend most superior
Wholesome, pure, and
nice.

A. J. GRAHAM & CO.,
TEA MERCHANTS,
First Floor, 16, City Chambers, QUEEN STREET, AUCKLAND

*** STRICTLY CONFIDENTIAL. ***

Money Lent on Jewellery, Watches, Plate, Clothing,
Tools, Sewing Machines, Pianos, Etc.

AT THE NEW PAWN SHOP **The "LOMBARD"** Wellesley St., Auckland
ALL TRANSACTIONS STRICTLY CONFIDENTIAL. (Opposite Public Library).

NORWICH UNION

FIRE INSURANCE SOCIETY

CHIEF AGENTS FOR AUCKLAND AND TARANAKI:

L. D. NATHAN & CO., AUCKLAND.

AMOUNT INSURED:

£500,250,000

LOSSES PAID:

£18,065,000

All classes of FOOTGEAR, and always the Latest Patterns, at the LOWEST PRICES.

SEAL
OF
SATISFACTION



OPPOSITE WYNDHAM STREET.

WRITE FOR CATALOGUE.

Queen St.
AUCKLAND.

MCKERRAS

D. GOLDIE, Timber Merchant.

UNLIMITED STOCKS OF WELL-SEASONED TIMBER
ALWAYS ON HAND.

Catalogues and Price Lists on application.
KAURI FLITCHES CUT TO ORDER.

Quotations given for Cargoes and Regular
Shipments to all Parts of the World.

OCEANIC SAWMILLS

ALBERT STREET and BREAKWATER ROAD,
AUCKLAND.

HEAD OFFICE—ALBERT STREET,
MILLS—ALBERT STREET and BREAKWATER ROAD.

Cable Address—"Oceanic." (ABC Code).

Telephones } NO. 98 BREAKWATER ROAD
NO. 653 ALBERT STREET



BUY A HOME —ON— EASY TERMS

FROM
GEORGE SAYERS,

AUCTIONEER & LAND AGENT,

KARANGAHAPE ROAD, AUCKLAND.

TELEPHONE 1517.

P. BRYANT,

Coal Merchant.

CUSTOMS ST. WEST, AUCKLAND
JERVOIS ROAD, PONSONBY
GREAT NORTH ROAD, GREY LYNN

Phones.
679
1138
1830

All Materials Supplied
at Lowest Current
Rates.

VESSLS AVAILABLE FOR CHARTER ON SHORTEST NOTICE.

Ask Your Grocer for

GEAR MEAT Co.'s

Extract of Meat

In 2oz. and 8oz. Jars, for Beef Tea, Soups,
Sauces, and Gravies.

Ox & Sheep Tongues

Potted Pastes for Sandwiches.

Preserved Meats of various Descriptions.

All made from Cattle passed by the Government Veterinary Inspectors.

SHAKESPEAR & Co.

TO ARRIVE—A Large Assortment of

DAINTY CHRISTMAS PRESENTS

All the Latest Novelties in Pincushions, Sachets, Table
Centres, Tea Coales, etc., etc.

FRESH IMPORTATION—LATEST DESIGNS IN
RIBBON WORK, SUITABLE FOR PRESENTS.
FANCY HANKERCHIEFS, POUCHES, BRACES, ETC.

HIS MAJESTY'S
ARCADE

Auckland, N.Z.

COUNTRY ORDERS
PROMPTLY ATTENDED TO.

All the Newest Designs and Materials for

ART NEEDLEWORK and LACEWORK

Pearnell's Washing Silks, Mercine's Knitting and
Crochet Silks in all colours, Art Linens, Art Canvas,
and a Large Assortment of Traced Goods.

SPECIAL TERMS FOR GUILDS
AND BAZAARS.

THE GREAT NORTHERN BREWERY

BREWERS & BOTTLERS
KYBER PASS R.P.

WINE & SPIRIT MERCHANTS
PORT ST. AUCKLAND.

ALIAS & STOUT

ROBERTSON'S WHISKY
G.H. MUMM & CO'S
GORDON ROUSE
CENTRAL

SANDEMAN'S
IMPORTED PORTS
CHERRIES

"Have one with me."

(ELECTRICITY)

WITHOUT PLATES.

AMERICAN DENTAL PARLORS

TEETH Extracted without Pain FREE WHERE SETS ARE ORDERED.

ALL OPERATIONS PERFORMED BY ELECTRICITY ABSOLUTELY FREE OF ALL PAIN.

HOURS: 9 a.m. to 6.30 p.m.

Best in the World, £3 3s. a Set.

QUEEN AND WELLESLEY STREETS, AUCKLAND.

(ELECTRICITY)

FINEST LISTS OF PROPERTIES IN NORTH ISLAND

INCLUDING

Farms, Businesses
 Houses, Hotels
 Suburban Properties

A. W. READ & CO.

THE Central LAND Agency

Durham Buildings, Queen St., Auckland

TRUE DESCRIPTIONS GIVEN OF ALL PROPERTIES.

Exchanges Arranged in all Classes of Properties.

Advertising Free.

EASY TERMS CAN ALWAYS BE ARRANGED.

CORRESPONDENCE INVITED.



Peek, Frean & Co.
LIMITED,
Biscuit Manufacturers,
London, England.

"OYSTER WAFERS"

The latest addition to our list of delicious wafers. Dainty in appearance and exquisite in flavour. Representing the finishing touch in the art of fine Biscuit making.

FOR BALLS, DINNER PARTIES AND ALL FESTIVE OCCASIONS.

Ferro-Concrete Constructions

Cables:—"FERRO," Melbourne.
" " Adelaide.
" " Auckland.

(Hennebique, Mouchel, Elicot, and Foorts Patents).

Codes Used:—"WESTERN UNION."
"BEDFORD McNEILL."



THE AUCKLAND HARBOUR BOARD have adopted Ferro-Concrete for the construction of their wharves. The above illustrations show a portion of the Railway Wharf now under construction. It will be 1,200 feet long by an average of 240 feet wide, composed entirely of fortified concrete, being a framework of steel designed for strength to carry the specified live and dead loads; the steelwork is encased in concrete and hermetically sealed. The appearance of the structure, when completed, is one of solid concrete: columns, beams, girders, and decking forming a monolithic structure of great strength and everlasting durability.

LONDON CO.
70 and 72, Chancery Lane.

Managing Director:
R. E. ELLIS, M.I.C.E., M.I.M.E.

Consulting Engineer: L. G. MOUCHEL
(Director General Hennebique Constructions)

Secretary: R. W. J. BURGESS.



Ferro- Concrete Constructions

Incombustible Buildings
Warehouses
Grain Silos
Flour Mills
Spinning Mills
Hospitals
Reservoirs and Stables

Ferro-Concrete Piles
Jetties
Wharves
Bridges
Cylinders for Foundations
Abattoirs,
Etc., Etc.

FERRO-CONCRETE COMPANY Auckland, N.Z.

W. A. ROBERTSON, General Manager.

R. F. MOORE, Chief Engineer Constructions.

The Country Speaks

In Raptures of what

"Champion"

HAS SAVED IT.

THE FOLLOWING IS AN EXTRACT FROM THE "HAWERA STAR":—

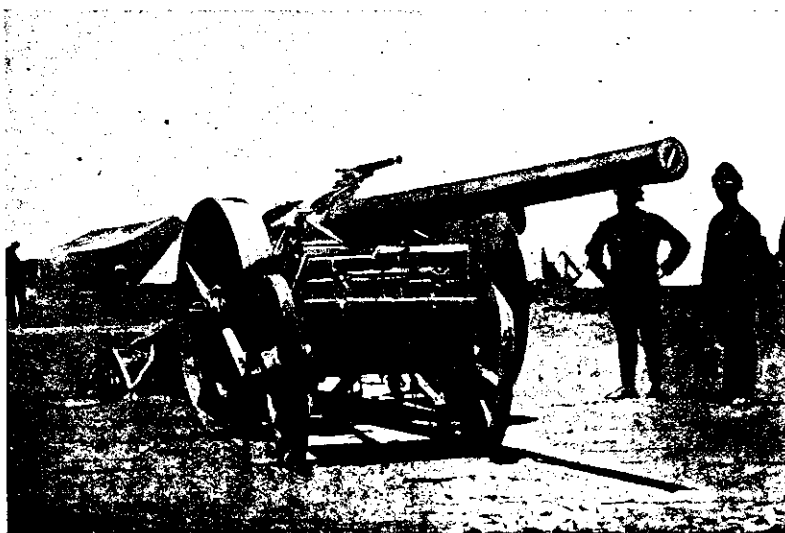
"The Northern Roller Milling Company, who manufacture the CHAMPION brand of Flour, are now working full time in order to keep pace with the ever-increasing demand for their produce. This must be very satisfactory reading to every breadwinner, when it is remembered that every effort such as persuasion, dumping, etc., has been resorted to by the Southern Flour Trust to induce this mill to join the combine and fix prices. That the Northern Company has been enabled to make such a successful stand against a trust (50 strong) is due to the splendid support given them by the public, who have shown their appreciation of the CHAMPION'S action in standing alone. This, together with the uniform and first-class quality of their products, places them at the top of the tree, both at local shows and also at the late Exhibition in New Plymouth, where the Northern Roller Mill's exhibit secured First Prize against All-comers.

When the Breadwinners remember that the Northern Company's action has saved them Thousands of Pounds, and mean still to go on doing so,

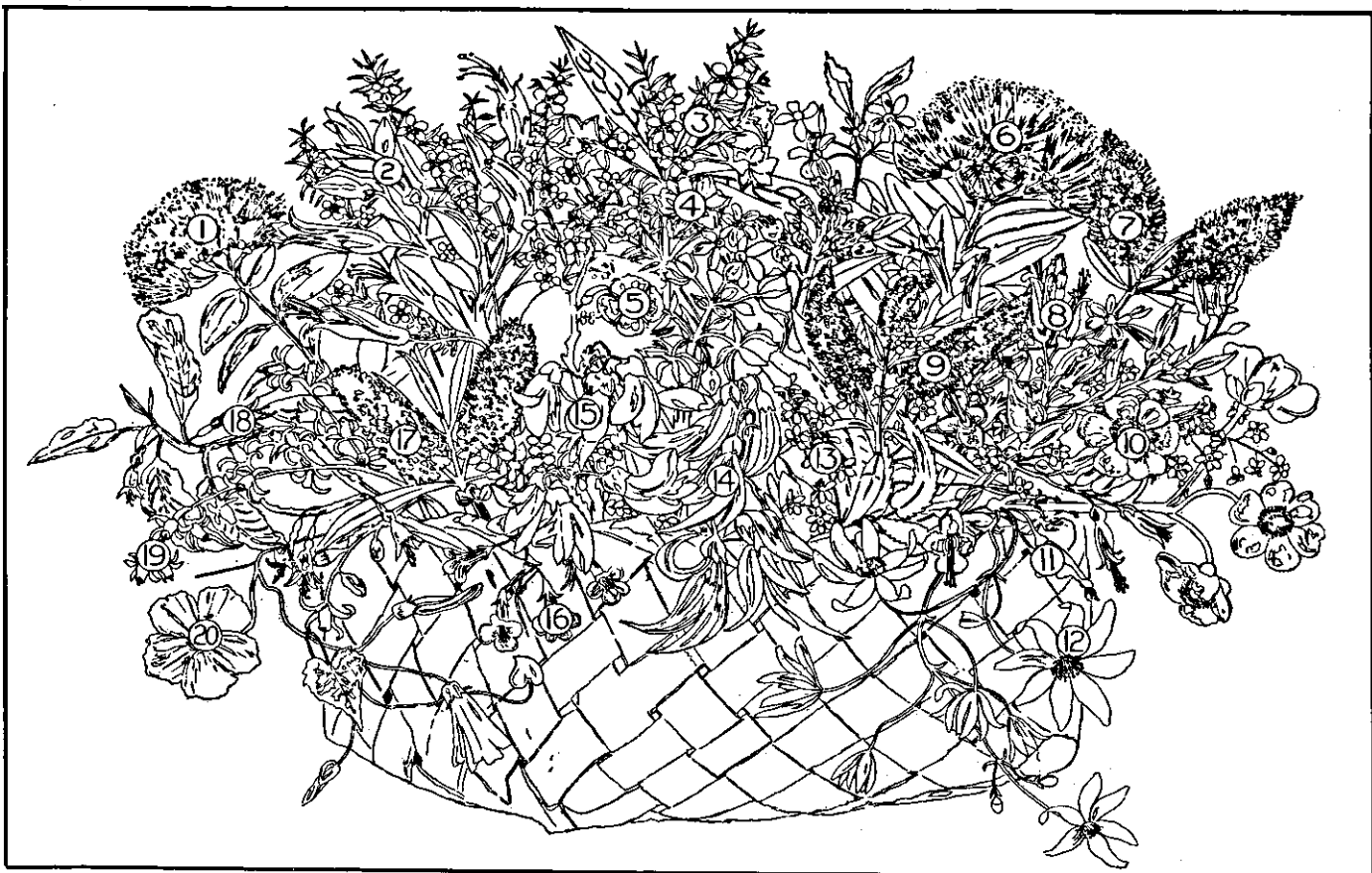
it is quite certain that their business must continue to increase. The public can assure this by insisting on being supplied with CHAMPION bread and flour, obtainable from practically every storekeeper and baker throughout Taranaki."

LABORUM
DULCE
LENIMEN

(THE SWEET SOLACE OF OUR LABOURS).

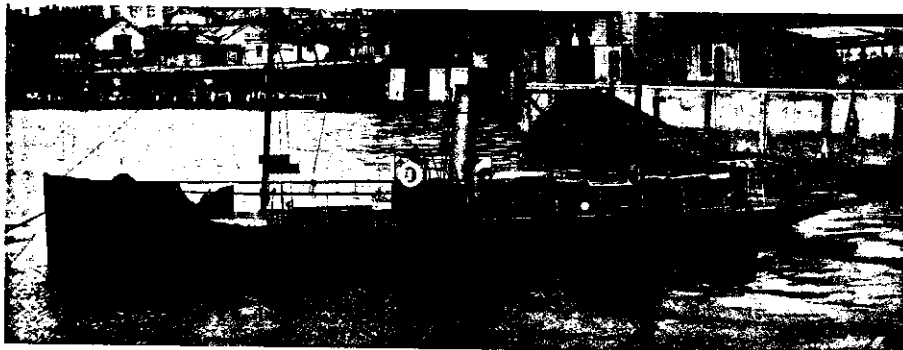


THE "CHAMPION" LONG-RANGE GUN, USED IN BLOCKING FLOUR TRUST.



NEW ZEALAND WILD FLOWERS: Key to the Coloured Supplement with the Christmas Graphic, 1905.

- | | | | |
|--|--|---|--|
| 1. Autumn Mata (<i>Metrosideros florida</i>) | 6. Pohutukawa (<i>Metrosideros tonantoni</i>) | 11. Puriri (<i>Pithecellobium</i>) | 16. Waiotata (<i>Rhabdanthus solandri</i>) |
| 2. Korari—Flax (<i>Phormium tenax</i>) | 7. Koromiko (red)—(<i>Veronica</i>) | 12. Puhuananga (<i>Clematis indivisa</i>) | 17. Koromiko (purple)—(<i>Veronica</i>) |
| 3. Manuka (<i>Leptospermum scoparium</i>) | 8. Korari (variegated) (<i>Phormium tenax</i>) | 13. Tairamoa, Bush Lawyer (<i>Rubus australis</i>) | 18. Konini—(<i>Fuchsia excorticata</i>) |
| 4. Poroporo (<i>Solanum azureum</i>) | 9. Koromiko (blue)—(<i>Veronica</i>) | 14. Kowhai-ututu-kaka (scarlet)—(<i>Clematis punicea</i>) | 19. Kohokohu (<i>Dryasophyllum spectabile</i>) |
| 5. Whau (<i>Entelea arborescens</i>) | 10. Korikori (<i>Hanaculus tenax</i>) | 15. Kowhai (yellow)—(<i>Sophora tetragona</i>) | 20. Pohuehu (<i>Convolvulus</i>) |



Steel Steam Yacht "KOROI," just completed for Mr. R. P. Gibbon.

SEAGAR BROS.

**Engineers,
Boilermakers and
Shipbuilders**

Iron and Brass Founders

**Hobson Street Wharf,
Adjoining Graving Dock, Auckland**

ESTABLISHED 1889.

P.O. BOX 613. TELEPHONE 583.

MAKERS OF EVERY DESCRIPTION OF

ENGINES and BOILERS

FOR

Land and Marine Purposes

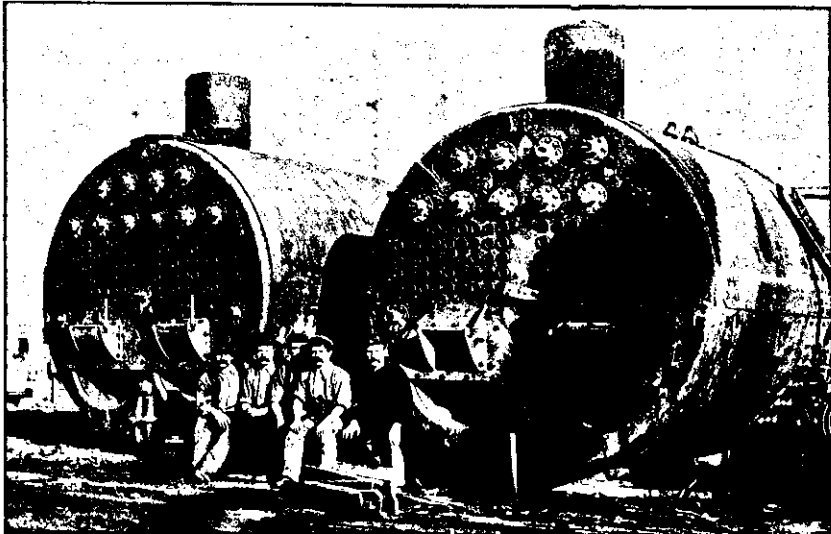
Also—STEAM STEEL LAUNCHES,
made with guaranteed speed.

??

ALL CLASSES IN

**Iron, Brass and
Bronze Cast**

Plans and Estimates given for any class
in the above branches of trade.



Boilers recently completed for the AUCKLAND HARBOUR BOARD DREDGER No. 121.