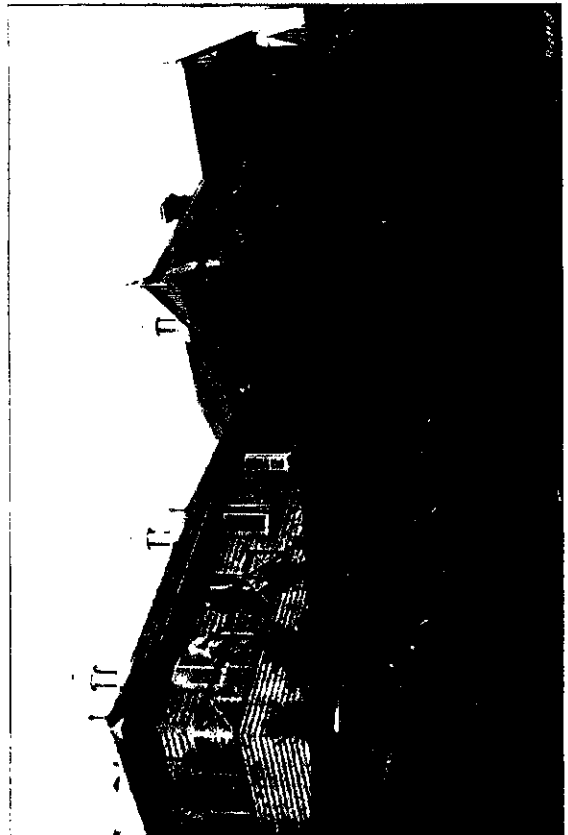


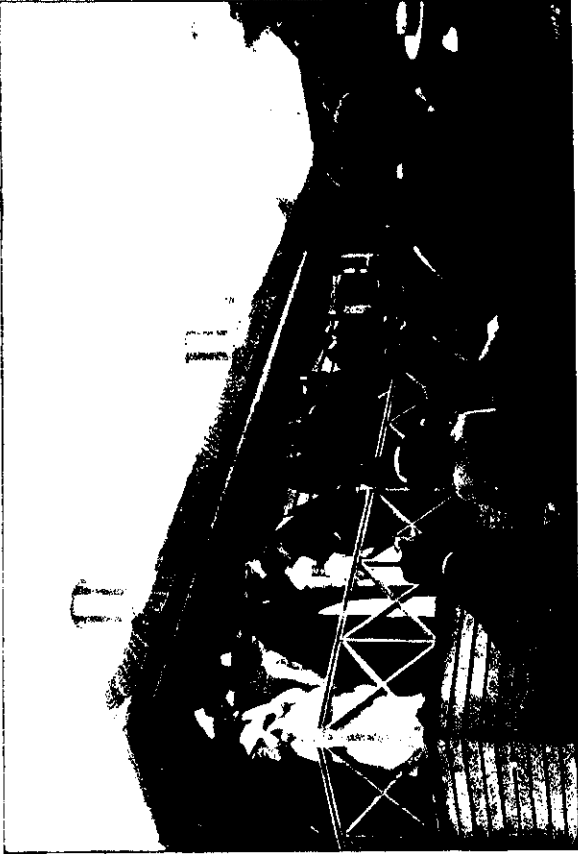


A BUSY DAY IN QUEEN-STREET, AUCKLAND.

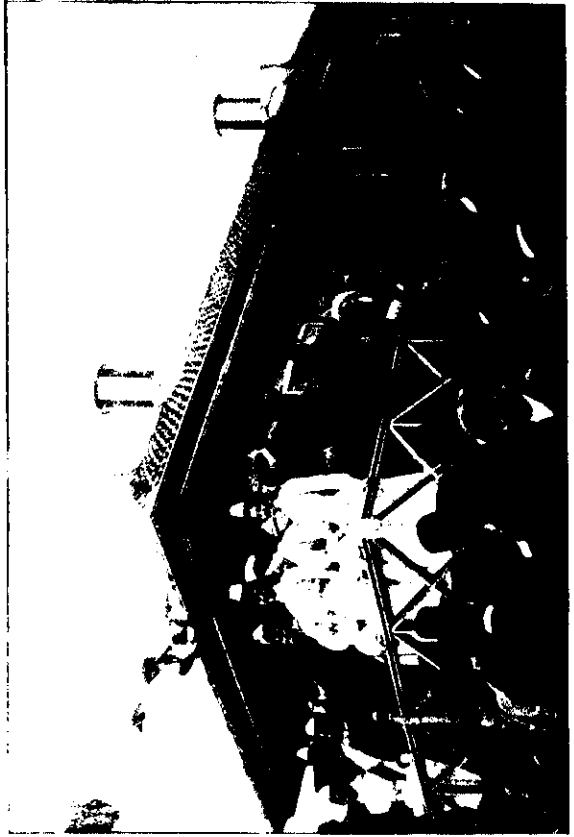


THE NEW BUILDING FROM THE DRIVE, WITH NURSES' COTTAGE AND HOSPITAL ON RIGHT.

Hanna, photo.



SIR JOSEPH WARD DECLARING THE ANNEX OPEN.



SIR JOSEPH WARD, THE NURSES AND DR. MASON, CHIEF HEALTH OFFICER.

OPENING OF THE CONSUMPTIVES' ANNEX TO THE NEW PLYMOUTH HOSPITAL.