

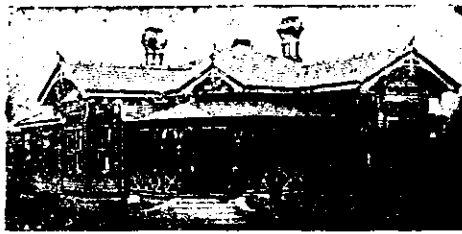
R. W. de MONTALK,

ARCHITECT,
22, Mining Chambers, Queen St., Auckland.

ARCHITECT OF THE AUCKLAND INDUSTRIAL MINING EXHIBITION, 1900-02.

Attends carefully to convenient arrangement of plans, to ventilation and drainage. Good material and workmanship. Designs handsome fronts. Supplies correct estimates and quantities.

For Cottages and Large Residences, Warehouses, Factories, Churches, etc.



For Shops and Offices, Freezing Works, Cool Storage, Cheese and Butter Factories, Slaughterhouses, etc.

USUAL CHARGES

Correspondence Answered Promptly.

MONEY TO LEND for the erection of all classes of buildings.

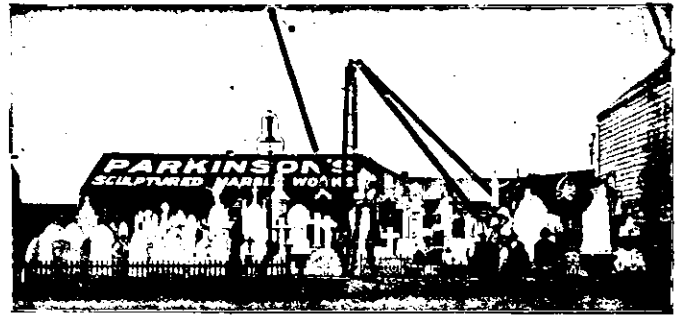
USUAL CHARGES

Correspondence Answered Promptly.

MONEY TO LEND for the erection of all classes of buildings.

Designed and Erected by R. W. de Montalk, Architect.

R. W. de MONTALK, Architect,
22, MINING CHAMBERS, QUEEN STREET AUCKLAND.



W. PARKINSON & CO., [TELEPHONE 364.]
Victoria St. West, Auckland.
(Between Hubson Street and Nelson Street.)
Branch Yard, WAIKUMETE STATION.
Monumental Sculptors,
Sculptors for the Westland War and Coronation Memorial, N.Z. Battery Commemoration Statue in Albert Park, Ross Memorial in Albert Park, Rotoman War Memorial.
The Largest Stock of Marble, Granite and other Memorials in New Zealand. Catalogues on application. Iron Tomb Railings, Cemetery Walls, shells, Etc. A large stock of Porcelain Wreaths on hand.
LOCATION—Take College Hill car and ask the conductor to put you down at Nelson Street. IT WILL PAY YOU.



JOHN GREY & SONS, Auckland.

MENZIES & CO., Waikato and Thames.

TELEPHONE 127.

Grey & Menzies

LIMITED.

Head Office

EDEN CRESCENT, AUCKLAND.

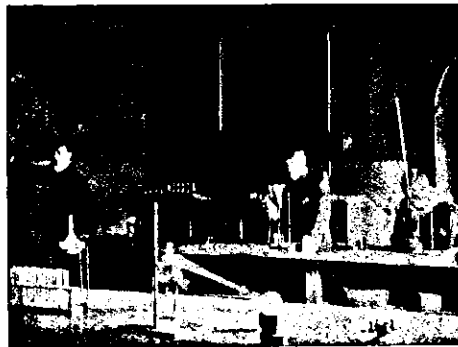
AERATED WATER and
CORDIAL MANUFACTURERS

GOLD MEDAL FOR AERATED WATERS AND CORDIALS.
Auckland Exhibition, 1898-99.

Visitor: Rev. W. BEATTY, M.A. (St. Mark's, Remuera)
Headmaster: GEO. BIGG WITHER, B.A. (N.Z.)
Resident Chaplain: Rev. C. H. TISDALL, M.A.

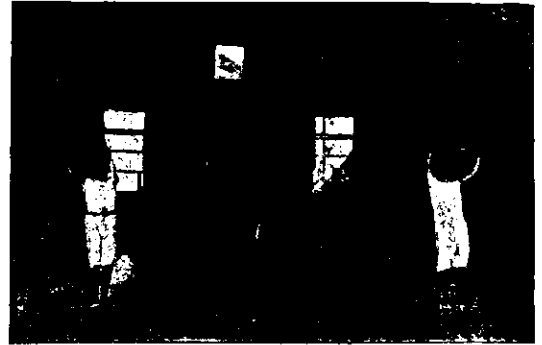
KING'S COLLEGE, AUCKLAND.

Assistant Masters: ARTHUR PLUGGE, B.Sc. (Vict. Univ., Eng.)
F. STUCKEY, M.A. (Hons. N.Z.)
F. WORLEY,
Visiting Masters for Music, Gymnastics, Shorthand and Carpentry.



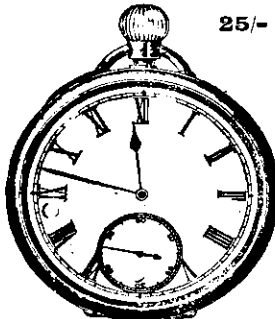
PHYSICAL LABORATORY

In order to meet modern requirements in regard to the teaching of SCIENCE, spacious and well-ventilated Buildings have been lately erected. These comprise a Physical Laboratory, a Chemical Laboratory, a specially darkened room for use as an Optical Laboratory, and Galvanometer Room, and a Room fitted with a furnace bench for assay work. Each of the first two mentioned is fitted with benches to accommodate 20 boys and has gas, water, etc., laid on. The buildings are well furnished with the necessary apparatus, and in the opinion of experts are thoroughly suited for the purpose for which they were built. The work done is similar in character to that of the ENGLISH ORGANISED SCIENCE SCHOOLS, and the full course occupies three years. THE TEACHING IS ESSENTIALLY PRACTICAL. The boys are taught chiefly BY THE MEANS OF EXPERIMENTS WORKED OUT BY THEMSELVES, and they thus acquire the faculty of making observations, and putting down the inferences they draw from them.



THE GYMNASIUM.

PROSPECTUS CAN BE OBTAINED AT MESSRS OPTON AND CO'S, QUEEN STREET.



25/-

The "MARVEL" Watch.
Patent Screw Hack. Oxidized Steel Case. Lever Movement. Non-Magnetic Watch.
MOST RELIABLE.

A. KOHN,  178, QUEEN STREET, ... AUCKLAND.
Manufacturing Jeweller & Watchmaker.

TIME IS MONEY!
TWO WAYS OF MAKING MONEY.

FIRST WAY.

Have your Watch repaired by **A. KOHN.**

A BETTER WAY.

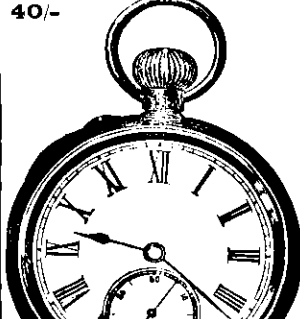
BUY YOUR WATCH FROM **A. KOHN**, 178 Queen Street, Auckland, who is known to be the most reliable Watchmaker and Jeweller in Auckland.

By Purchasing either of these Watches you **MAKE TIME** and **SAVE MONEY.**

See our 4-guinea to 9-guinea RINGS.

Being Manufactured in Auckland have no duty to pay, hence these are cheaper than imported. Being Hand-made they are stronger and better than imported at higher prices.

A SPECIAL LINE GREENSTONE BANGLES, 5/6.



40/-

The "CANTERBURY" Gentle Silver Swiss Lever Watch. Full Jewelled. Compensation Balance and Steel D. at proof Cap.

SEND OR WRITE FOR CATALOGUE. FREE.

Sole Agent RHEUMATIC RINGS. Cured Thousands.