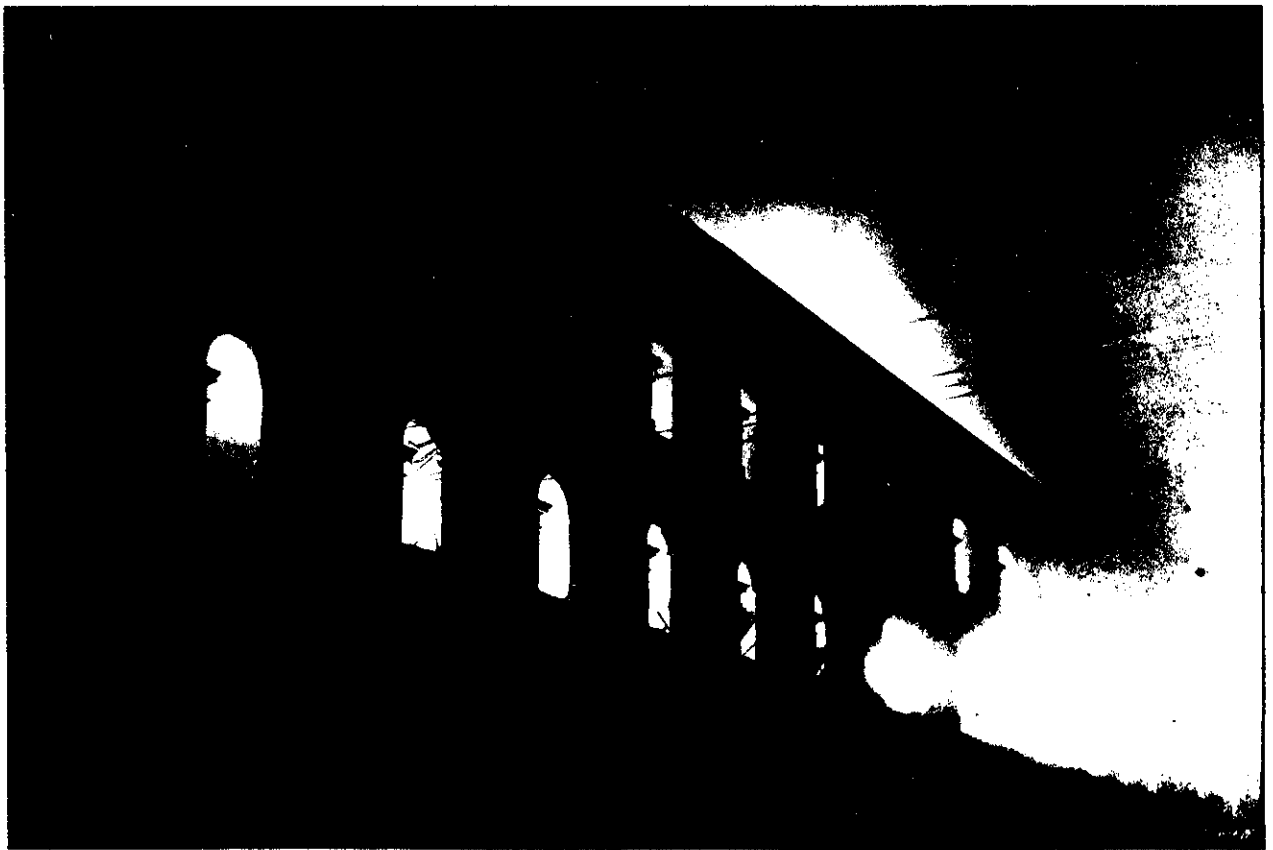




VIEW OF MESSRS. KEMPTHORNE PRONSSER'S HUGE WAREHOUSE DURING THE PROGRESS OF THE FIRE ON THURSDAY NIGHT.



Scheerf, Sarouy Studios, photo.

THE WAREHOUSE ON FRIDAY MORNING ONLY THE OUTER WALLS STANDING.

The Great Fire in Wellington.