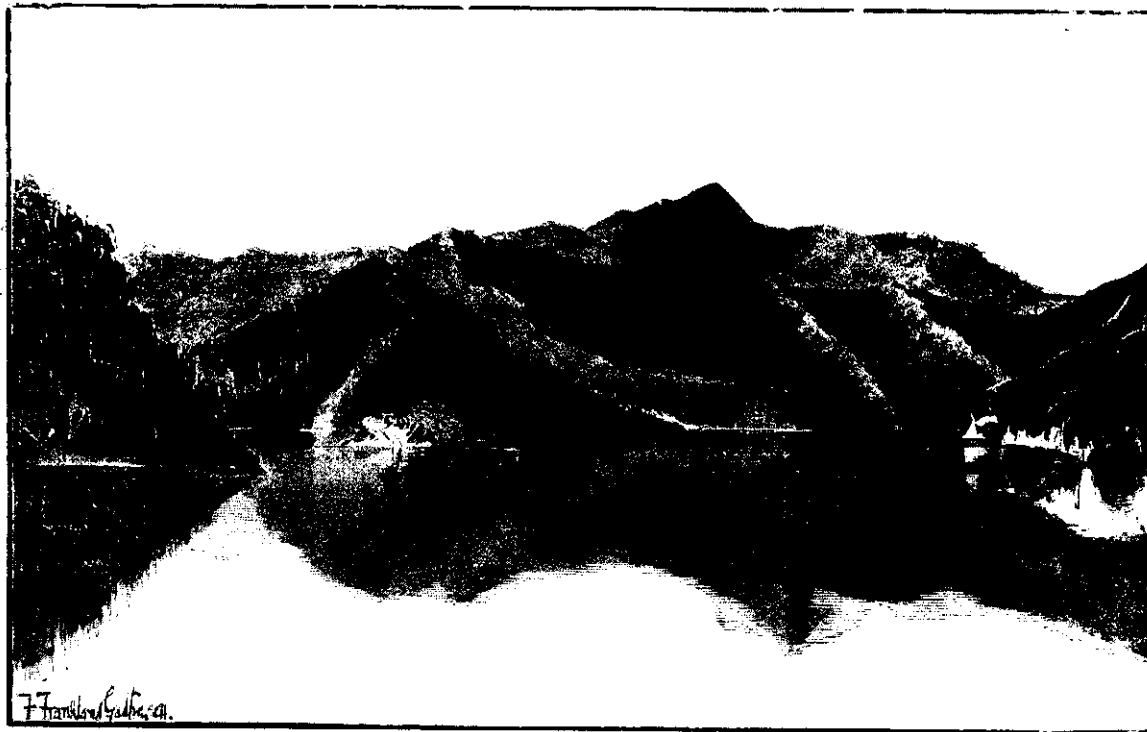


daily between the town and Mahakirpawa and other places on the Sounds.

The streets are wide, out of all proportion to the buildings, looking as if designed for a distant future when Picton shall be the favourite watering-place of the capital of New Zealand. The street leading up from the quay bears the name of Wellington-street. Hereon is situated the Customs

Wairan Road we come to the Borough Council Office, and in the vicinity of Nelson Square—a pretty level green square of about two acres, leased and played on by the Picton Cricket Club (which, by-the-by, has an exceptionally strong eleven, or has had in past seasons)—is the Church of England, an unimposing wooden structure, which is, however, beautified internally by pretty stained-glass windows,

in and around the neighbouring Sounds in fishing. Mr A. G. Fell (the present Mayor of Picton) has a large and very complete malt-house, and G. A. Smith and Co., have a timber-mill in the centre of the town. The R.M. for the district is J. Allen, Esq., and the member for Waimea-Picton, C. H. Mills, Esq., who, however, resides at Havelock. The cemetery is situated on the side



Mabel Island. Mt. Stokes.

PICTON HARBOUR.

LOOKING FROM PICTON UP THE HARBOUR.

and Post-office, and immediately opposite Oxley's Pier Hotel. A little further up is the Ship Hotel facing the water, and further on we come to Phillpott's store and the Bank of New Zealand's building. Facing Fell's malt house on the next corner is Jinkin's general store. In High-street, starting at the seaward end, is the Ter-

minus Hotel, kept by Mr Falconer; then come the U.S.S. Offices and Allport's Boarding House; whilst on the same street are situated the stores of J. Greensill and Co., J. Godfrey, Girling and Co., M. O'Donnell, and others. Here, too, are the publishing offices of the bi-weekly, *Marlboro's Express*, published by Mr A. T. Card, the agent for the NEW ZEALAND GRAPHIC. Passing across the railway line to the

those over the Communion table in memory of the late Mr Adams, of Langley-Dale, being especially beautiful. Close by are the Schools, Smith's Timber Mills, and near these again the brewery of L. B. Jones. Across the Square, and facing the Cricket Ground, is the Clarendon Hotel, kept by Mr S. Eyes. In this connection we forgot

of a hill a bit away from the town. In past times it was kept trim and neat by convict labour, but has, unfortunately been allowed to fall into a rather dilapidated condition. Our sketch of Picton, which embraces most of the town near the water, is taken from across the Spit; that of the harbour from between the railway station and Terminus



VIEW OF QUEEN CHARLOTTE SOUND, FROM THE SNOOT, NEAR PICTON.

minus Hotel, kept by Mr Falconer; then come the U.S.S. Offices and Allport's Boarding House; whilst on the same street are situated the stores of J. Greensill and Co., J. Godfrey, Girling and Co., M. O'Donnell, and others. Here, too, are the publishing offices of the bi-weekly, *Marlboro's Express*, published by Mr A. T. Card, the agent for the NEW ZEALAND GRAPHIC. Passing across the railway line to the

to mention the George Hotel, a good commercial house kept by Mr G. Harris on High-street. At the end of the same street is the Court House and Police Offices. Picton has a compact little hospital, the resident surgeon of which is Dr. Scott. There is an establishment for the drying and curing of this famous 'Picton herrings' and other fish, just across the harbour, and a good many men are employed

Hotel; and the view of Queen Charlotte Sound from the headland known as 'The Snout.'

'If I were to commit suicide,' said Gus de Jay to his father's physician, 'what kind of a verdict would the coroner bring in?' 'Justifiable homicide,' was the emphatic reply.