

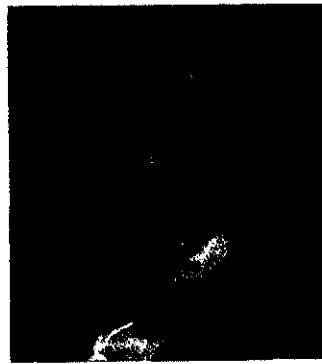
The Governor's Visit to the Thames.



J. L. WALTON,
County Councillor.



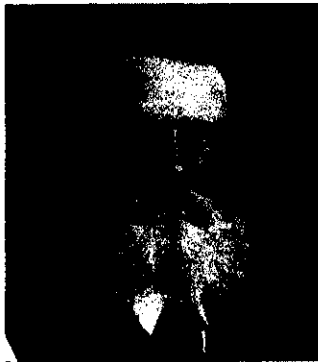
JAMES MCGOWAN, M.H.R.



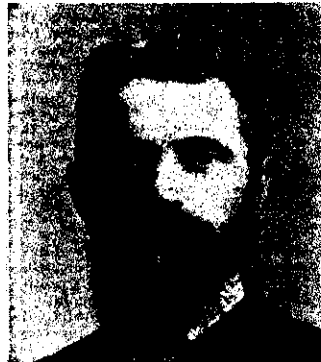
JAMES MCENTERR,
County Councillor.



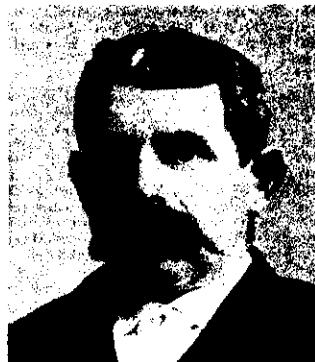
T. A. DUNLOP,
County Chairman.



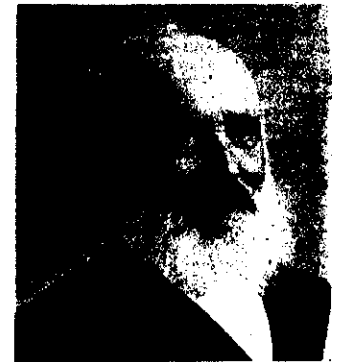
T. KILLGOUR,
County Councillor.



GEORGE S. CLARKE,
Borough Councillor.



W. DAVEY,
Borough Councillor.



E. W. HOLLIS,
County Clerk.



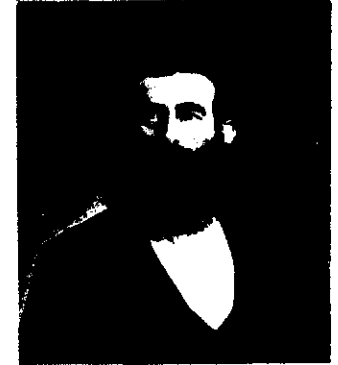
W. LUCAS,
Secretary Miners' Union.



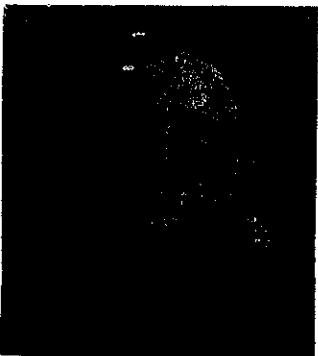
J. M. MCLAREN,
County Engineer.



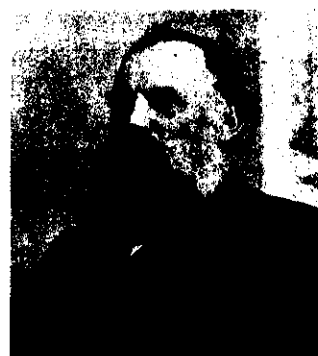
M. O'KEEFE,
President Miners' Union.



H. SIMMONDS,
Borough Foreman of Works.



J. M. FOY,
Borough Councillor.



T. RADFORD,
Borough Councillor.



F. TREMBATH,
Borough Councillor.



THEO. WOOD,
Borough Councillor.

Photos. by Foy.

MEMBERS OF THE LOCAL BODIES AND MINERS' UNION CONSTITUTING THE COMMITTEE WHO RECEIVED HIS EXCELLENCY.