

**SERGES  
TWEEDS  
CLOTHS**

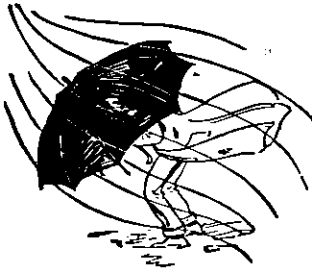
FOR  
**TAILOR-MADE GOWNS**  
AND  
**Cycling Costumes.**

We Sell per Yard all our Dress Materials—  
**SERGES (double width) from 4s. 6d.**  
**CLOTHS from 5s. 6d.**

WRITE FOR SAMPLES.

**NODINE & CO.,**

**LADIES' TAILORS,  
WELLINGTON, N.Z.**



**In the...  
Rain Storm**

the man got very wet. The wetting gave him a cold. The cold, neglected, developed to a cough. The cough sent him to a bed of sickness. A dose of Ayer's Cherry Pectoral, taken at the start, would have nipped the cold in the bud and saved the sickness, suffering, and expense. The household remedy for colds, coughs, and all lung troubles, is

**Ayer's  
Cherry  
Pectoral.**

PREPARED BY  
**Dr. J. C. Ayer & Co.,**  
LOWELL, MASS., U. S. A.  
Gold Medals at the World's Chief Expositions.

Beware of cheap imitations. The name—Ayer's Cherry Pectoral—is prominent on the wrapper, and is blown in the glass of each bottle.

**TEN PUDDINGS EACH** of a PINT can be made out of ONE POUND of good Corn Flour. THE BEST CORN FLOUR—  
**BROWN & POLSON'S**

**PATENT BRAND—**  
Is a trifle dearer than ordinary Corn Flour, but the difference in price cannot be noticed when divided over ten puddings. The superiority in flavour and quality can be distinguished at once. BROWN & POLSON have been making a speciality of Corn Flour for nearly 40 years. They guarantee what they sell. See that your grocer does not substitute some other make. Many articles are now offered as Corn Flour, usually without the maker's name, and sometimes bearing the name of the dealer instead, which can only bring discredit on the good name of Corn Flour.

**LONDON AND PARIS  
FASHIONS.**



REAL artistes in millinery declare that it is only those who have no idea of the irresistible charm of good and — above all — appropriate dressing still cling to the tradition of the plain

'schoolboy' sailor hat trimmed with a simple band of ribbon. Of course, this shape may be tolerated in the morning, or for country wear, provided the accompanying costume is "en suite." It can be worn, for instance, with an unaffected little serge or tweed gown, or perhaps with a dust cloak or waterproof, though, after all, a 'Homburg' or 'Deerstalker' model generally looks better with a long serviceable mantle. One of the reasons which prompts me to thus expatiate on the "pros" and "cons" of the sailor hat is the fact of so many English girls adopting this knock-about style of "chapeau" quite indiscriminately on the Continent, thus giving foreigners the idea that our women possess not the slightest taste in millinery, or even in any detail of dress; for, ten to one, the lady who dons her sailor shape will wear it equally as calmly with a smart sequined blouse as with a cloth coat and skirt. A very useful design to affect "en voyage," and one which cannot excite ridicule, is the fairly broad-brimmed, round tan straw hat trimmed with a full frill of black lisse, some gold braid, and loops of light blue taffetas ribbon. For afternoon millinery, flowers are to be more than ever in favour. Already bright coloured corn-flowers ornament dark blue platings, with a draping of the new gauze "en suite." As to the artificial roses, they are prettier than ever this season; and the manufacturers seem to have discovered delicate tints quite unknown even last year. One of the most delightful floral hats I have



A NEW FLORAL HAT.

noted for some time, and of which we give the illustration, is a 'Parma' mauve shape in very coarse 'strawberry basket' straw, turned up smartly on the left side. The only trimming on this model is a long garland of tea-roses, shaded to perfection from a glowing apricot tone to the melting pink one sees in the sky at sunset. The flowers form a circular wreath where the brim is raised, and are then brought round the crown and finally pinned so as to form quite a clump of blossoms on the left side.

From the first days of spring to the thoroughly hot hours of summer, it is sometimes rather puzzling to choose an appropriate and serviceable walking costume for little girls who have passed the stage of early childhood, but who are not yet sufficiently grown up to wear clothes like those of older demoiselles. A charmingly-cut overall cloak in some light summer material would prove very handy for the young maidens who, with so smart an outdoor mantle, need not wear anything very weighty in the way of a frock underneath. Indeed, such a confection as the model sketched in this column quite does away with the necessity of a dress, provided the wearer has tolerably full and stiff petticoats. This design is modelled in powder-blue alpaca, and is lined with a light surah of the same shade to just above the knees, the upper portion being perfectly innocent of any facing whatever. Four large cut steel buttons

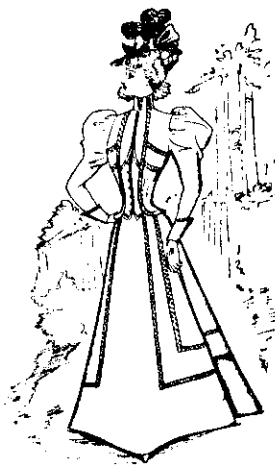
fasten the cloak on one side; and on the shoulder—in one with a high turned-over collar—is a tuted-shaped cape, edged with narrow black velvet ribbon. Musketear cuffs, with the same style of trimming, finish off the "pique" sleeves. For the



A USEFUL PELISSE.

younger children there is the new short reefer-coat, with a hood and numerous pockets where Miss Tomboy can store away her tops, her goodies, and her dolls' ribbons. In this pelisse the designer has, by the way, inserted a 'ship' pocket just under the first two buttons.

I have already seen rattier pretty models in walking dresses of dark blue summer serge—which has revived again with increased popularity—but in these samples I hardly cared for the white cloth revers, that certainly look "chic," but are so un-serviceable in town. To-day's sketch of a neat walking dress affords an excellent suggestion for those who cannot afford to make thoughtless bargains. Here we have a dark blue serge gown trimmed rather profusely with narrow, round black mohair braid, which is planned on the skirt in such a manner that the figure is in no way shortened by this addition. The round-lacquered jacket is in no way with the short waistcoat which fastens with tiny black bone buttons over another front of cream washing silk. This is stitched on to a thin linen lining, and being separate from the remainder of the coat, can be sent to the cleaner's without any inconvenience. Arranged inside the high collar of the jacket is a ruffling of ivory lisse. On dull days the cream vest might be aptly replaced by a cardinal satin front, or by one in willow green velvet; for hardly any other colour harmonizes with the dark blue. These



A SERVICEABLE SERGE GOWN.

braided costumes require to be made very cleverly so as not to degenerate into the common style that characterizes some of the ready-made shop gowns to be bought for a mere song. A profusion of appliques (brading being the most general of all), good lace is now being cut up so that the flowers may be applied in different ways on some of the richest evening gowns. The fashion is, however, one "de luxe" and not within the means of many.

The very pretty reception gown given as my concluding illustration is made of

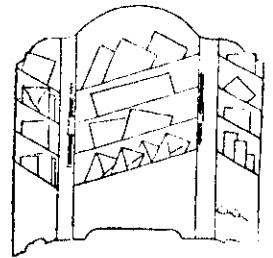
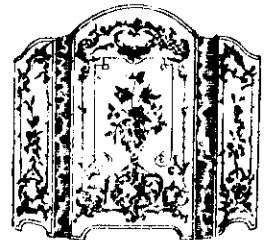
peach-coloured silk with richly embroidered low bodice over palest green chiffon, which also forms the neck-band.



PRETTY RECEPTION GOWN.  
HELOISE.

**WORK COLUMN.**

When talking about poker work I promised to give a design suitable for the decoration of leather in this fashion. A very charming design will be found in my



SCREEN, LETTER, AND STATIONERY HOLDER.—BACK VIEW.

second illustration, showing a little screen meant to stand on a writing table; it is prettily lined with soft silk, and slat pockets are made to hold writing paper, invitation cards, or whatever may be desired by its owner.

Most waste-paper baskets stand on the floor, and this is probably the orthodox position for this useful accessory. At the same time, it is not always convenient to have a rubbish basket standing on the floor. I mean that there is not always a protected corner where one can be absolutely certain of the basket's not being upset by a passer-by; moreover, I person-