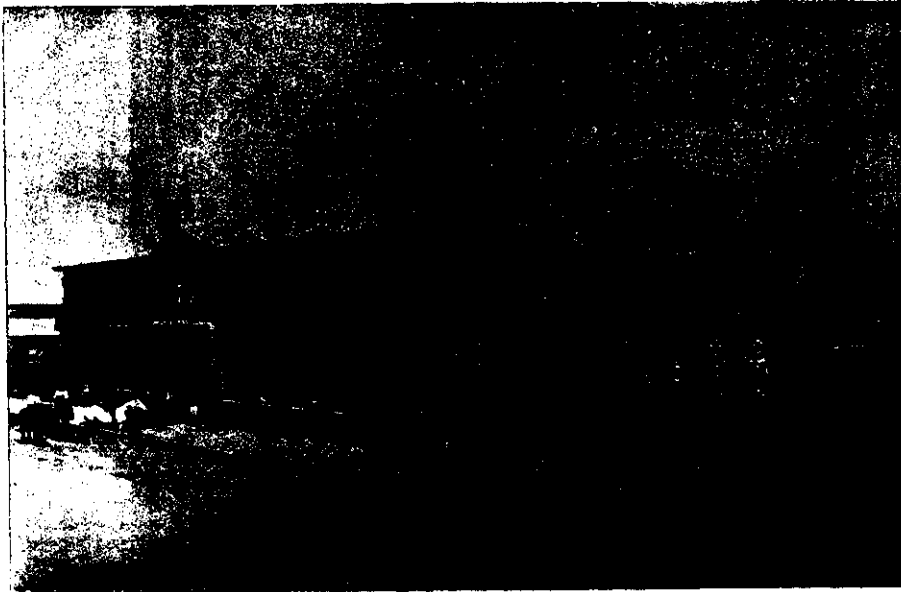


THE GREAT FIRE AT HAWERA.

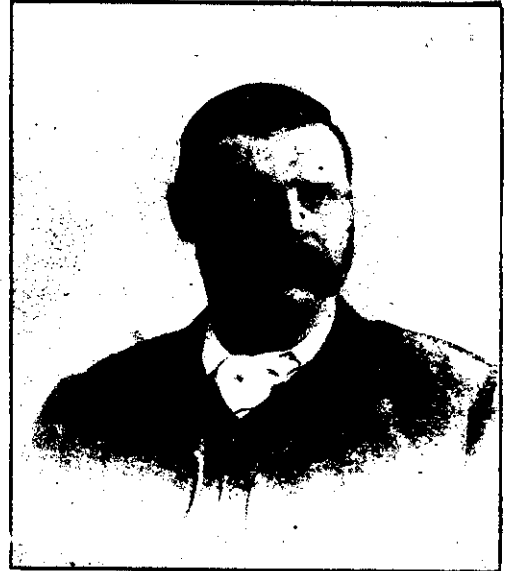
SOME VIEWS TAKEN BEFORE AND AFTER THE FIRE.

SEE LETTERPRESS PAGE 287.



B. Schmidt. photo.

THE REGMONT HOTEL, BEFORE THE FIRE.
Showing Smith's premises adjoining where fire originated.



THE LATE MR. W. T. CAVERHILL, WHO WAS LOST IN THE
HAWERA FIRE.



NEW POST OFFICE, HAWERA, AS IT WAS BEFORE THE FIRE.



NEW POST OFFICE, HAWERA, IN FLAMES.

B. Schmidt. photo.