

TO DARKEN GREY HAIR.

Lockyer's Sulphur Hair Restorer, quickest, safest, best; restores the natural colour. Lockyer's, the real English Hair Restorer. Large bottles, 1s 6d, everywhere.—(ADVT.)

ENO'S 'FRUIT SALT' has been found an excellent corrective to the digestive organs, and in the Colonies, India and in South America has a largely increasing sale. It is better by far than 'sips'; and among the Good Templars—a numerous community all over the world—it is recognised not only as a refreshing, but also as a Stimulating drink.—*European Mail.*
Sold by all Chemists and Stores.

LONDON AND PARIS FASHIONS.



WHILE there is much to admire in the present millinery, there is much to condemn in the attempt to reintroduce the quaint old style of hair-dressing. My first sketch is a smart spring hat from Paris. It is called the 'Maurice hat' and is in fancy pink straw. The brim is cut away at the back, and replaced by a cluster of roses shaded from pink to crimson. There is an under brim of pleated black lace, and a shaded pink glacé silk bow in front on the crown. The ornaments are in jet.



PARIS MILLINERY.

For my second, third, and fourth illustrations, I give some evening styles new and pretty. 2. Five bouillons Reccamier adorn the brow, whilst the sides are carelessly undulated. From the high chignon escape tiny curls, real or false; in the centre is fastened an cigarette of gilt wheat.



SOIREE DRESSES AND COIFFURE.

care. 3. Youthful frock: Princess blouse in spring green accordion-pleated silk muslin, finished off in deep vandykes, and drawn to the waist with a folded satin sash, fastened at the side by three leafless roses, similar to those puckering the muslin scarf round the hem of the satin skirt. Other blossoms loop up the waves of the elbow sleeves in satin, veiled with muslin. Floral shoulder knots adorn the beaded band which frames the square opening of the bodice. 4. Skirt in deep coral yellow moussé, ornamented with a long trail of glycine, which droops on the right side, in opposition to the sash ends in mauve velvet, edged with lace and caught up with a tuft of glycine. This forms the continuation of the folded belt and side folds reaching on the right side up to the shoulder. Full puckered sleeves in keeping. Wreath of glycine round the low bodice in white guipure over yellow satin.

The days of the dressy blouse are not yet numbered, and will be the vogue for many a month to come. With black satin or motté skirts the Parisiennes are extremely partial to white satin corsages covered with light-coloured chiffon gathered *à la Bébé*. For instance, mandarine yellow silk muslin smothering a creamy foundation is very popular with brunettes, while orchid mauve chiffon veiling white has a decided run among blonde young ladies. For day purposes the magpie blend is one of the smartest. Black and white is always safe and ever undeniably elegant. The blouse following my hat is made with the new Empire sleeves gathered to the yoke at some inches below the shoulder line. These important affairs are built in a soft black and white check surah, and from the elbow are provided with a slender cuff of black jet and narrow silver



A NEW BLOUSE CORSAGE.

braided worked so deftly together on a white satin ground that they form an exquisite trimming. The yoke matches this lower portion of the sleeves, and the same idea is further carried out by way of straps from bust to waist, these vertical insertions being headed by a couple of full-blown rosettes of black and white baby ribbons. To clasp the waist a rather narrow white satin belt is provided. By the way, there will be a general mourning among womenkind when Madams Modus decrees that bands and sashes shall no longer be with us to knock at least ten years off the age of the wearer. What a variety of roles the pretty diamond or paste safety pin brooch is allowed to assume, my lady may secure her bunch of fresh hyacinth or gardenias to her corsage by means of this dainty little jewel; or she can clasp her ostrich plumes with the glistening *bijou*, or, still better, ornament her lapel with the same.

The fifth illustration is a fashionable Paris walking dress. It has a round bodice with gigot sleeves and godet skirt in



PARIS AFTERNOON COSTUME.

nasturtium brown tweed, brightened up with a shower of beads recalling all the nasturtium tints. Yoke in guipure work, outlined with gold thread. Straw hat, trimmed with coques in shaded ribbon, with two *strettes* quivering on each side. Collarette, with large bow in guss.

The sixth sketch shows a new French blouse made in nymph pink crepon or canvas cloth, accordion pleated, and



NEW FRENCH BLOUSE.

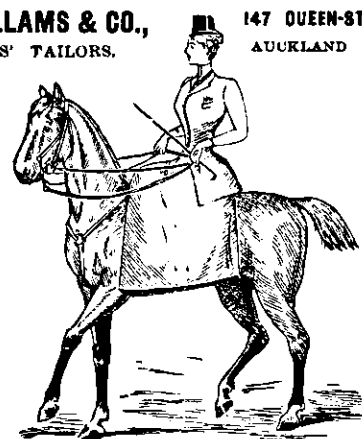
striped with frills crossed in the centre with silver braid or fancy galon; similar trimming encircles the full elbow sleeves in plain canvas, over which droops a Greek drapery in Surah silk. Belt in ruby velvet, fastened at the side under a cluster of loops and ends.

BELOISE.

A. WOOLLAMS & CO., 147 QUEEN-ST AUCKLAND

LADIES' TAILORS.

Tailor Gowns, Jackets, Costumes, Covert Coats, &c. Latest London Tailor Styles. RIDING HABITS (as per design), from £8. 5s.; perfect fit guaranteed.



ANNOUNCEMENT.

NODINE & CO.,
... TAILORS & IMPORTERS

(FROM COLLINS STREET, MELBOURNE).

HAVE COMMENCED BUSINESS AT—

163, LAMBTON QUAY, WELLINGTON.

CHOICE GOODS AND STYLES.
HUNT'S RIDING MATERIALS.
REAL HARRIS TWEEDS.

EVENING AND WEDDING SUITS A SPECIALITY.

SPECIAL GOODS AND MEN

— FOR —
LADIES' HABITS AND LADIES' GARMENTS.

HABIT FRONTS, HATS, AND LONDON HAND-MADE RIDING BOOTS
... KEPT IN STOCK. ...

Mr Nodine has held the LEADING POSITION in Australia for many years.

SPECIALITY IN LADIES' WAISTCOATS.