

What Paris Says of---

(Continued From Page 30)

out, you will add a flower to your costume at every time of the day. To the coat or tailor-made, add a camelia or gardenia in felt or kid; to the afternoon ensemble, add a carnation or early Victorian posy made of feathers; to the evening gown, add something more decorative, a peony, a rose or an orchid made of organdie or isinglass. Only then will you be quite beyond reproach.

HANDKERCHIEF NOVELTIES

Something new in the way of handkerchiefs are brilliant coloured affairs. They are made of crepe-de-chine, are stitched round the edges in black, and into one corner, by way or ornament, is embroidered a Mah Jongg character. There is a decided vogue for coloured handkerchiefs just now, and the daintiest models in fine lawn or crepe-de-chine are to be seen in delicate powder blue, bois-de-rose, amethyst, and lettuce green shades, mixed with white or beige. The batik handkerchief has died a sudden and complete death. In fact, batik in all its forms seems to have been relegated to the things of the past.

SHORTER SKIRTS

The higher the crown the shorter the skirt sounds the slogan of

present feminine trend. Vagrant and yet unsettled as fashions may appear, ahead of their consecration by the eclectic few, one thing remains unaltered: the shortness of skirts. Coutouriers absolutely refuse to lengthen them, in spite of stern moralists. Parisian sheer-stockinged legs will continue to be displayed at knee-length, much to the dismay of puritans who see in the modish uplift of the hem-line the downward tendency of modern morals.

But the comfort and practicality of the short skirt cannot be disputed. Now that we can walk with a free swinging step, we can look back with amazement and horror on the days of the hobble skirt, when climbing the stairs of a bus was a dangerous feat.

USEFUL GARTERS

Many garters are supplied with a rosette which conceals a mirror and powder-puff. Some of the newest pairs have a pocket with a shingle comb attached and its fellow a wee purse for money or latch-key.

YOUTHFUL MODES

Even nursery rompers grow daily more elaborate. One model in nat-

ural tussore silk was gaily decorated with a Punch and Judy show right in the centre. Scarves are as popular for children as their elders, but the newest idea for seaside wear is to attach them to a hood.

BRIGHTER WALLS

There are indications that the parchment and ivory distempers, the flat neutral tints in paint and paneling are to forsake our walls and the brightest of papers to return. One recently shown in Paris had a bright yellow background covered all over with field flowers in their natural vivid colourings massed loosely together.

PAISLEY AGAIN

Paisley fabrics are reappearing; not in their entirety but used as trimmings. Bands of Paisley crepe de chine adorn a dead white crepe frock, and Paisley in the lighter mixtures is being used on dark blue as scarf collar, swathed belt, and handkerchief.

CHIC LIPS

Really up-to-date people are making up the lower lip much more heavily than the upper. This uneven use of the lipstick is apt to produce an effect of perential sulks, but it is quite the last word in cosmetics in Paris.

ADVANCE MODES

Certainly the waist will be far

more clearly defined and will approximate to the normal. The silhouette will be less narrow and more flowing, cut will become even more intricate, and sleeves promise many curious caprices.

Ladders in Stockings

We all know how annoying it is to find a ladder in one's stocking. If you carry your vanity bag, however, the difficulty is soon overcome. Apply a little vanishing cream, and within a few minutes it will be quite stiff and dry, and the stitches held in place until the ladder can be repaired.

MRS. POPE Ltd.

107a Cashel Street, Christchurch
Direct Importers of English
and Continental Novelties

Just landed a fine selection of Hand-worked White Linen Embroidered Goods in white and colored, comprising: Doileys, Suppers, Runners, Duchesse Sets, Shams, Tray Cloths, Cosies and Dinner Sets

All on Good Quality Linen
and Moderately Priced

Sole Agents for Sale of
Weldon's Reliable Dress Patterns
1s 1d post-d

Letter orders promptly attended to

Smarter Wash Frocks

Wash frocks are smarter than ever. Never were colour schemes so fascinating, designs so original. The new Tobralco patterns are among the very smartest—and what's even better—they're all guaranteed colour-fast. Neither washing nor sunlight can harm them. The lovely fabric is British-made and woven for really hard wear.

There's a Tobralco design for every purpose—and for nurses' uniforms white and navy Tobralco are simply splendid. And Tobralco is so easily washed. No starch needed—just iron while damp and it comes up like new. When buying, don't forget to see the name on selvedge.

TOBRALCO

FOR SMART AND RELIABLE WASH FROCKS

it's Tootal's too!

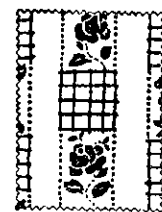
2/11 a yard—38 inches wide.

TOOTAL BROADHURST LEE COMPANY LIMITED, MANCHESTER, ENGLAND.

TAT 3



Here is a smart multi-colour design for Mummy's own wear.



There are lovely roses in the Tobralco gardens and they never never fade



This pretty pattern comes in flame-orange blue-black, red-black and blue-gold effects.



Miss Muffet and the spider are living happily ever after in Tobralco-land.



This cute little piccaninny has a ride on a golden lion every day.



Lots of little girls will want a frock of this pretty design.