

Caveman Husbands

In Romance a Hero—In Reality a Brute

It is a commonplace that happy marriages are almost always affairs of give and take, and that the cave-man, in romance a hero, is in reality a brute whom few women will tolerate.

Levelling up of the rights of the sexes has so changed marriages that only shipwreck awaits the despot-husband or the woman who, carried away by her new independence, tries to rule her man as well as her home.

Dominance, some may retort, is only going back to the law of the survival of the fittest. Or, as a dramatist has put it, the world is made up of two kinds of people—Boots and Doormats which the Boots make use of. All of which is very well, of course, if instinct, impulse and brute force were the sole human qualities, and rational characteristics did not exist.

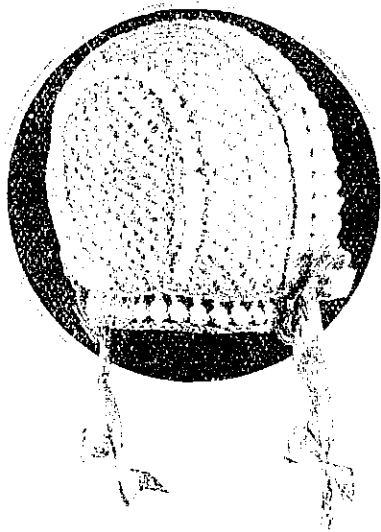
From the self-effacement of a wife who may be obedient to the length of servility, a happy (often the happiest) union may sometimes result, but this is possible only when one partner is born to serve. When both have pronounced, or even

average, individualities, neither can be abjectly suppressed.

One wife may resent it if her husband himself pays the domestic bills, tries to assert his views about the way she arranges the furniture, or wears her clothes. Another may welcome such advice. Similarly there are husbands who wish wives to interest themselves in their clothes and be the guardian of their manners and habits; others who scorn such "interference."

These are trifling matters that often start an estrangement, though they are capable of adjustment by drawing a dividing line which leaves to each a fair share of responsibility and scope for the development of their separate personalities.

Weakness begets pity rather than admiration. Recognising this, the emancipated present-day girl may go to the extreme of seeking to dominate her husband. But let her be wary of doing this. She may produce a helpless, indecisive consort—the type most unlike herself, and so the one she is least likely to admire.



Coat & Bonnet for Baby

Continued from page 18

For the front make a chain the width of the blue front and work to the armhole, then shape to correspond with the blue knitting. Work to the neck and shape, then slope the shoulders or if you find it easier to keep them straight, you can slope them when facing in.

Bottom Border

One chain and 1 treble to form holes in blue.

Make 6 lines of holes.

For the fronts and cuffs make 2 lines of holes.

For the collar work 4 rows of holes. You must begin at the slope on one front and work carefully all round to the end of the slope on the other front.

Now work a double crochet stitch round each corner of the spaces in pink to make roses.

The Bonnet

To make the bonnet you will require one ounce of two-ply Scotch fingering in pale blue and 1oz. in pink.

Cast on 30 stitches for the front piece and work 32 patterns.

For the centre back, cast on 21 stitches work 8 patterns, then another 4 patterns, gradually sloping off the ends of the rows. Join with 1 row of spaces and roses.

Make a border of 2 lines of spaces and roses to turn back and 1 line for the bottom of the bonnet. Line the bonnet in pink to match the coat.

WRIGHT'S BIAS FOLD TAPE



Your Draper stocks

WRIGHT'S BIAS FOLD TAPE

in large varieties of materials & colours. If he cannot supply you, write direct to the New Zealand Agents.



ALL those difficulties you've always experienced—frayed edges, puckered corners, the hard task of making the usual type of binding tape conform to irregular shapes—all these simply cannot exist when you use Wright's Bias Fold Tape—the tape with exceptional elasticity.

The beauty of binding is its regularity—and unusually fine effects follow on the use of Wright's Bias Fold Tape.

Wright's Bias Fold Tape

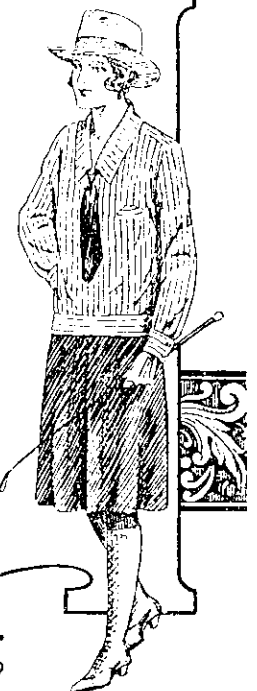
THE RODGER IMPORTING CO.
Manchester Street, CHRISTCHURCH

“Luvisca”

(REGISTERED)

FOR WEAR MORNING. NOON & NIGHT.

FOR daintiness of fabric, linked with durability and reasonable outlay, one turns naturally to “LUVISCA,” which from the combination in its manufacture of artificial silk with cotton of the highest grade, can be washed and ironed time after time and still preserve its original freshness.



None genuine without name on Selvedge or Tab on Garment.

“Luvisca”



has the sheen and suppleness of silk, it wears and washes well and is pleasantly inexpensive. For Ladies' Over-blouses, Dainty Lingerie, Pyjamas, etc., Children's Day Frocks and Sleeping Suits. “LUVISCA” is in universal demand.

SOLD AT ALL LEADING STORES. If any difficulty in obtaining, write Agents for New Zealand:—

MESSRS. H. W. AIREY, LTD.,
G.P.O. Box 300 AUCKLAND