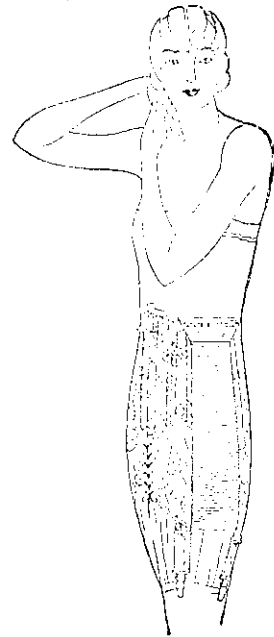


*Photograph by Steichen  
Gown by Frances Clyne*



*The gowned figure in the accompanying photograph is wearing Gossard model 1036 (directly above) a 16 inch Clasp Around of fancy broche and silk elastic. Adjusted by lacing below front clasp. Elastic insert at the top in center back. Sizes 24 to 36.*

**Charming!**—yet she would look well in anything

Have you heard this said about—yourself? If not, try wearing a proper foundation garment—a Gossard, beneath your gown. Make your selection from

## *The Gossard Line of Beauty*

Elastic Belvadears - The Complete - Girdles - Step-ins - Combinations  
Reducing Garments - Brassieres - Gossard Front-lacing Corsets

Obtainable in inexpensive materials as well as the most exquisite, luxurious fabrics—at leading shops everywhere

*The CANADIAN H. W. GOSSARD CO., Ltd., 114 Castlereagh St., Sydney, N. S. W.*

2-M

*Become a Subscriber  
Fill up a Form TO-D.1Y*

*When Writing to Advertisers Please Mention the "Mirror"*

*Please pass this  
Copy on to your Friends*