

MORRIS-COWLEY
ENGLAND'S LEADING LIGHT CAR

PRICE: 3-seater £325, 4-seater £365

Body painted grey and upholstered in grey antique leather cloth, double screen, hood bag, and hood with side curtains which open with the door, and can be used indefinitely as side screens.

Self-starter and dash-board equipment, including speedometer, 8-day clock, petrol gauge, and oil gauge, spare petrol can and carrier.

There is no kind of motorist to whom one or other of the Morris models does not appeal.

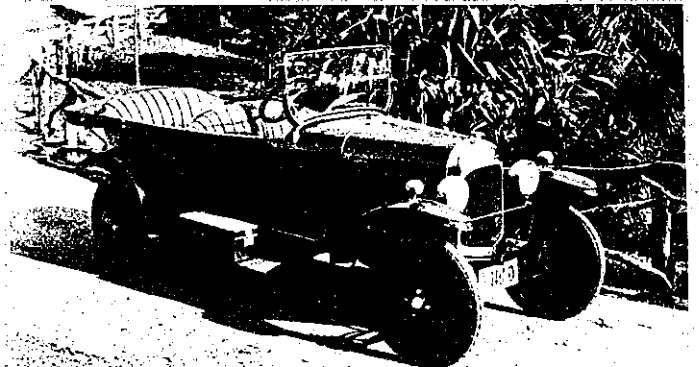
RING FOR DEMONSTRATION

HARRISON & GASH

KHYBER PASS ROAD (Phone 1057) NEWMARKET

CITROËN

Built and Designed by The EMINENT French Engineer
ANDRE CITROËN



The Ideal Lady's Car . . . £395

The Most Economical Car in the World. Will run for less than threepence per mile, including Tyres, Benzine and Oil. 35-40 miles per gallon of Benzine.

JAMES TOMBS & CO. LTD.

Importers

CITROËN and STUDEBAKER Motor Cars

37 Albert St., AUCKLAND

And at Collingwood St., HAMILTON



Road Progress in Auckland: Old Mill Road, showing development of City Council's new Housing Scheme.

Photograph by courtesy of the Auckland Municipal Record.

THE WELL-GROOMED WOMAN'S MOTOR TRIP (Continued)

and, whether short or long, brush it thoroughly, preferably with a brush covered with antiseptic gauze. The loose weave of the gauze permits the bristles to penetrate, and an amazing amount of dust can be removed. Use as many fresh pieces of gauze as are necessary to make the last piece "come (approximately) clean."

Before we stray from the subject of hair, a word as to nets. If you never wear one at any other time, don't neglect

it on the motor trip. Besides keeping the hair tidy, it prevents it from being roughened and broken by the wind, and minimizes the amount of dust accumulated. Of course, you will not buy nets indiscriminately. A really good net has a gloss and life of its own and, particularly in the chestnut and auburn shades, can add quite a bit to the live look of your own hair. See that the edge of the net is well under the hair at the sides, and secure it with the smallest size invisible

hairpins, twisted together to secure them.

Your nails and hands are likely to suffer from the general drying out effect of constant wind. The travellers' little manieure sets are indispensable, and contain supply enough for all but the most extended trips.

Always remember that a little trouble taken at the right time, even though you are weary, will save much trouble later, and may prevent irreparable damage.