



Topical Press photo.

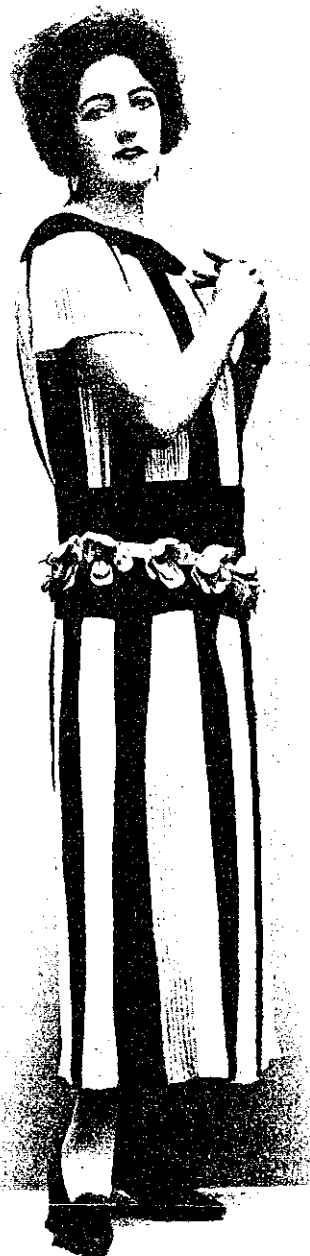
## THE UNUSUAL IDEA

*A "pull-on" hat is indispensable in every woman's wardrobe, but they can vary in effect as can the flowers of summer—and not always like the flowers are they becoming. The one illustrated is unusually effective in cream and cinnamon, and would look as good with a tailored linen suit as with a simple sports frock.*



Topical Press photo.

*This would prove a most serviceable and effective design for little Madame Twelve-year-old. It could be in two shades of shantung or linen for summer and a light-weight cloth for autumn. Brown and cream, blue and fawn, would be equally effective. For the linen outfit the tiny blossoms could be crocheted or embroidered, and for autumn, tiny flowers punched from suede could be used.*



Topical Press photo.

*Pleating is never out of fashion when rightly used, and this magpie frock is decidedly "right." Supple black satin divides the panels of pleated ivory crêpe de chine, and soft, creamy suede poppies form a girdle that should satisfy the most fastidious taste.*