

"Roylete" Folding Frame Tent

This is the finest tent for lawn or beach, easily carried in motor car, and you are independent of the use of bathing shelters. The frame is very convenient for hanging clothes and towels on. The size is 8 x 8, large enough to sleep two people on stretchers or four boys on the ground. As a play tent on the lawn there is no fear of children tripping over guys or pegs, as there are none clear of the bottom of the walls.

Price, as illustrated £6/12/6. Or in Fine White Cotton 7 x 7, £3/17/6

Patent applied for, and obtainable only from

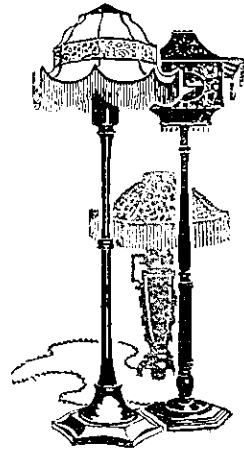
E. L E R O Y

Maker of Tents, Flags, Cots & Camp Requisites
81 QUEEN STREET, AUCKLAND

Electrical Appliances

(AUCKLAND) LIMITED.

7 His Majesty's Arcade
Auckland



ELECTRIC LIGHTING
FIXTURES

BOWLS & STANDARDS

OSRAM ELECTRIC LAMPS
All Candle-powers

ELECTRIC IRONS
40/- 35/- 30/-

ELECTRICAL APPLIANCES

(AUCKLAND) LIMITED

7 His Majesty's Arcade - - Auckland

DORT

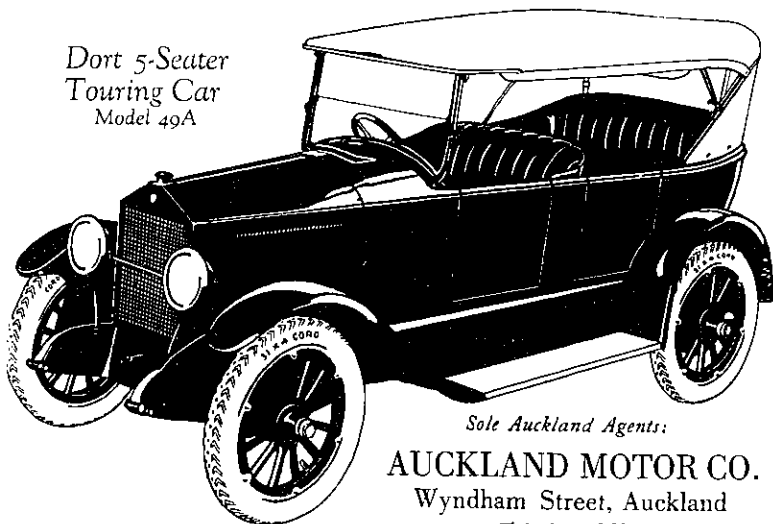
Quality Goes Clear Through

POLICY

To build well. To represent fairly. To deliver full value. To hold unsullied a reputation for honest manufacture and candid salesmanship won by a consistent record of thirty-five years in the vehicle industry.

You will appreciate the pleasure of a trial run in a Dort

Dort 5-Seater
Touring Car
Model 49A



Sole Auckland Agents:
AUCKLAND MOTOR CO.
Wyndham Street, Auckland
Telephone 3584

You Cannot get wet in the 19oz. "Mattamac" Stormproof

THE "Mattamac" is waterproof—absolutely. In appearance it is identical with the ordinary Raincoat. . . Though one-third the weight and half the price it will keep you dry in any weather. . . Being wind and chill proof, as well as wet proof, it can be used *additionally* as a Light Overcoat for Driving, Motoring, etc.



Unbelted Coats for Ladies and Men
19 oz. weight
75/-



Belted Coats for Ladies and Men
21 oz. weight
85/-

"Mattamac" Stormproofs come from the West End of London, where the best overcoats are produced. . . They have easy Raglan Shoulders, Roomy Sleeves, a Wide Skirt, Perpendicular Pockets and Wind-Strapped Cuffs. . . They are smart in appearance and comfortable in wear.

"Matta" Fabric, from which every genuine "Mattamac" Stormproof is made, is a compact-folding material and the lightest Stormproof Fabric known. . . It is tough and durable and so waterproof that even wind-driven rain cannot penetrate it. . . Made in five shades.

CALL AND SEE THE "MATTAMAC"

If unable to call, write to us, and we will send, post free, the "MATTAMAC" BOOKLET, which illustrates Belted & Unbelted Coats for Ladies & Gentlemen

Sole N.Z. Agents:
FRANK DUNCAN & CO. Ltd., 26 Lorne St., Auckland