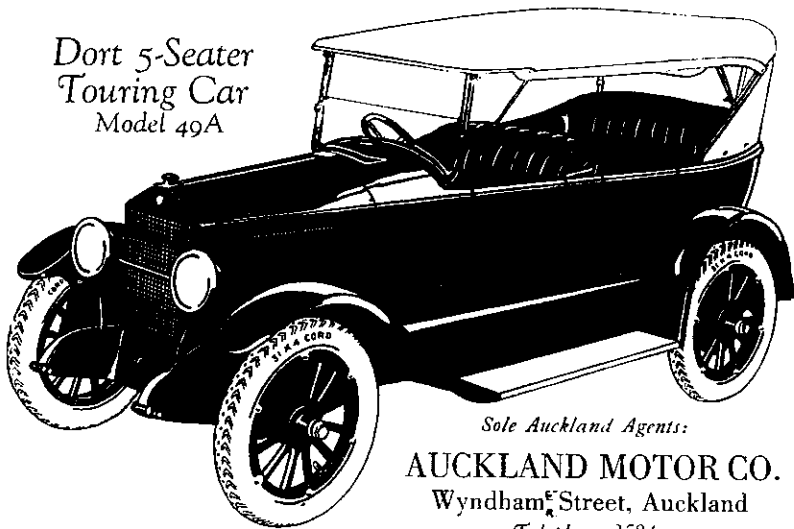




# The Fine New Dort

The New Dort is a handsome car. Its lines are restrained—it is not "freakish"—yet it impresses you at once as being thoroughly modern, smart and different from anything you have seen. Cleverly sprung, it rides so serenely smooth, you forget bad roads. Ladies especially appreciate the ultra-modern refinements and the perfect mechanical efficiency of the Dort. You are invited to enjoy the pleasure of a trial run

Dort 5-Seater  
Touring Car  
Model 49A



Sole Auckland Agents:  
**AUCKLAND MOTOR CO.**  
Wyndham Street, Auckland  
Telephone 3584

# Summertime!

IS almost here and with it will come the attendant pleasures of sea and beach. Hauraki Gulf, the playground of Auckland, will attract its thousands and will dispense freely pleasure, health and contentment. The white winged yachts and chugging motor launches will be out in their hundreds. Surfdale, Auckland's big new seaside resort, will ring with the merry laughter of the children as they paddle in the sea, build their castles on the sand, explore the beautiful native bush reserves or ramble over the green hills. Hundreds of families will be living on their own sections enjoying the pleasures of the seaside combined with the comfort and freedom of their homes. Families who in past years could not have afforded this now find it possible because our easy terms of 8d. per day, no interest and no rates, enable them to buy their own section, and in many instances save this money out of the weekly housekeeping allowance.

# SURF DALE

## THE KEY TO WAIHEKE

Is destined to be Auckland's most popular and progressive seaside resort. Everything is in its favour. Its nearness to Auckland, an easy, pleasant trip and beautiful surroundings. Even by the present steamers it is only sixty minutes from Auckland and as Surfdale develops new and faster steamers must inevitably follow. Planned along model lines, reserves for all purposes have been made. Beautiful native bush valleys, plots suitable for tennis courts, bowling greens, dance hall. Due to this forethought, even when the time comes that there are no available sections left, Surfdale will be the healthiest, cleanest and most pleasant of Auckland's suburbs. Sections are selling rapidly, and to the man who wants a seaside section for pleasure or investment we would say "BUY NOW WHILST THE PRICES ARE LOW AND THE TERMS EASY." Magnificent building sites from £30 to £70. Send for our illustrated booklet and plans, or if you are handy to the city, call in and we will arrange to show you over the estate.

## Oneroa Beach Estates

Wright's Bldgs., Fort St.

Cr. Commerce St., Auckland

or

154 Queen St.

CARLTON STUDIO



## "ROYLETE" Double-Roofed Tents

The upper roof or fly is one foot above the cave and at top as well. This is very important, as it makes a free current of air between the two. . . . The walls are 5ft. high; they lace together at all the corners, and any side may be rolled up or taken out as an awning. . . . The larger sizes are suitable for fixing partitions in, and each compartment has its separate entrance

Prices include bags, poles, pegs and hammers.

	7x7	9x9	10x10	12x12	14x14	12x20
	£ s. d.	£ s. d.	£ s. d.	£ s. d.	£ s. d.	£ s. d.
6½oz. Drill	9 7 6	12 12 6	14 17 6	17 2 6	20 17 6	25 5 0
7oz. Duck	10 7 6	13 12 6	15 17 6	18 17 6	22 17 6	27 10 0

# E. L E R O Y

Maker of Tents, Flags, Cots & Camp Requisites  
81 QUEEN STREET, AUCKLAND