

Tribute to a Woman Doctor

A unique honour was paid to a lady doctor on January 25th of this year, when a statue, erected to the memory of the late Dr. Margaret Cruickshank, was unveiled at Waimate. As far as we are aware, this is the first occasion on which a statue has been erected to a doctor in New Zealand, and it speaks volumes for the love and esteem in which she was held by her fellow-townsmen, that they should have so honoured her.

Dr. Cruickshank was endowed with attributes of both intellect and character beyond those of most women. Born at Palmerston, and educated at the Palmerston School, she won a Board School Scholarship, and then went on to the Girls' High School, Dunedin. She became dux of this school, and later won a University Scholarship. She was a woman of strong character, great-hearted, generous, loving and sympathetic; in all her work she upheld the highest ideals of the medical profession, and when the great epidemic swept over New Zealand, she never spared herself. She remained at her post for several days after she had herself contracted the disease in a fatal form, and only gave in finally when she was completely spent.

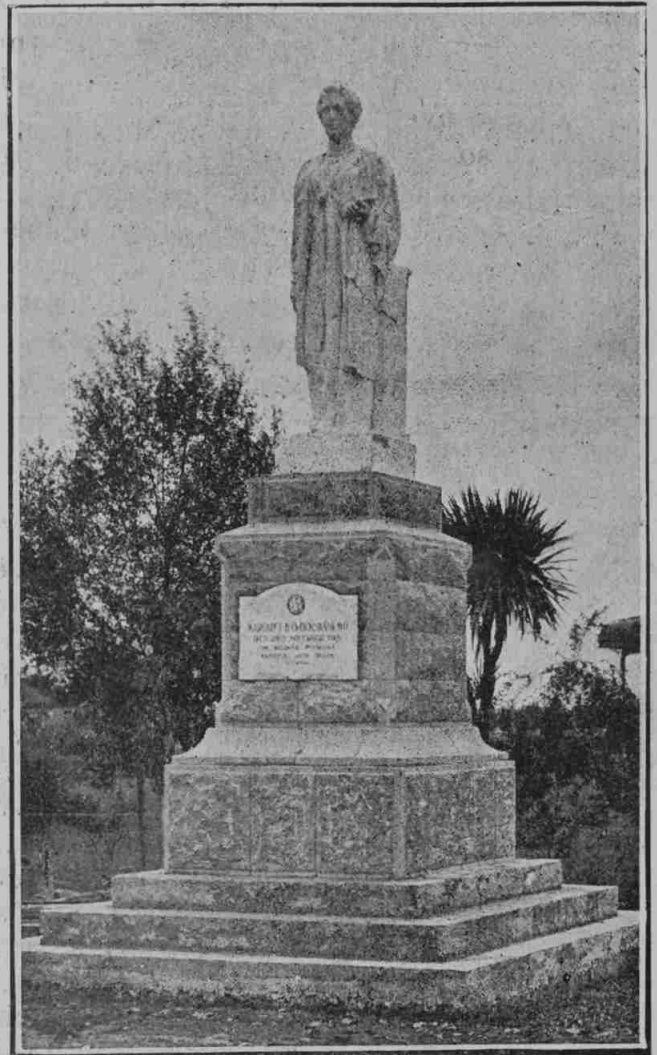
The inscription on her statue was chosen with full appreciation of the manner of her death:

The Beloved Physician
Faithful unto Death.

She has set a high standard for future female medical practitioners to live up to.

The statue is an imposing one, sculptured from the best Italian marble from Carrara, and is situated in Seddon Park. It stands about 17 feet high, the figure itself being 9 feet, and the sculptors have been fortunate in getting a remarkably true expression of the features. The speakers at the unveiling ceremony were Mr. Hart, Chairman of the County Council (in the chair), Mr. Bitchener, M.P., representing Government and Minister of Health; Dr. Emily Siedeberg, represent-

ing N.Z. Medical Women's Association; Miss Allen, representing Otago University Women's Association; the Hon. E. H. Clark, representing Palmerston friends; and Mr. C. E. Bremner, representing old friends. Wreaths were presented by the N.Z. Medical Women's Association, and by the O.U.W.A.



The unveiling was performed by Mrs. Barclay, in whose home Dr. Cruickshank had lived for twenty-three years.

A large number of people had come to the ceremony from surrounding districts, and the committee very cordially invited these and the speakers to afternoon tea, when Mr. Bitchener and Mr. Bremner took the opportunity to congratulate the sculptor, Mr. Tretheway, on the excellence of his work, and to express thanks