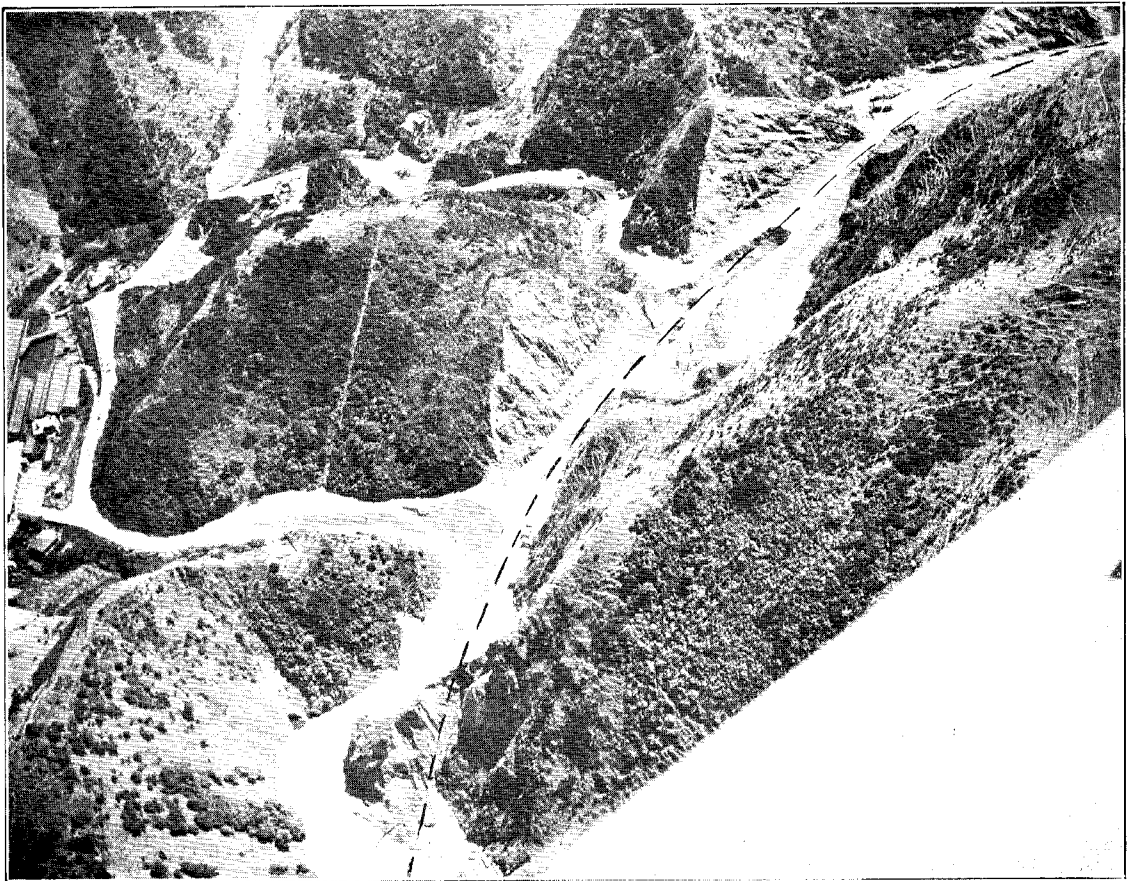


SILVERSTREAM BRIDGE OVER THE HUTT RIVER CONNECTING WITH WELLINGTON—NAPIER,  
VIA WAHRARAPA, MAIN HIGHWAY. EIGHT 62 FT. SPANS, 22 FT. ROADWAY, TWO  
4 FT. FOOTWAYS.

WESTERN HUTT MAIN HIGHWAY.



NGAHAURANGA GORGE RECONSTRUCTION. DOTTED LINE INDICATES AMENDED  
ALIGNMENT WITH OLD ROUTE SHOWN ON LEFT.

WELLINGTON—TAWA FLAT MAIN HIGHWAY.