

LEGEND

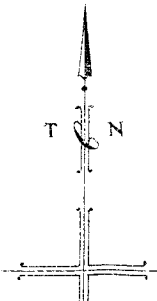
SEDIMENTARY ROCKS

RECENT AND PLEISTOCENE	
TERTIARY (?)	
TERTIARY	AWAMOAN Caversham Series
	OTOTARAN Burnside Series
	Wangaloa Series
CRETACEOUS	Brighton Series
	Taratu Series
	Kaitangata Series
MESOZOIC	JURASSIC Putataka Series
	Bastion Series
	Warepa Series
	TRIASSIC Otamita Series
	Oreti Series
	Kainiku Series
UPPER PALAEOZOIC	Clinton Series
PALAEOZOIC	Tuapeka Series

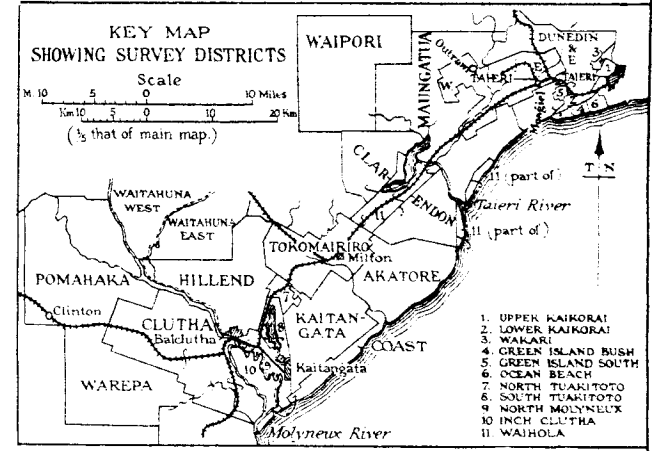
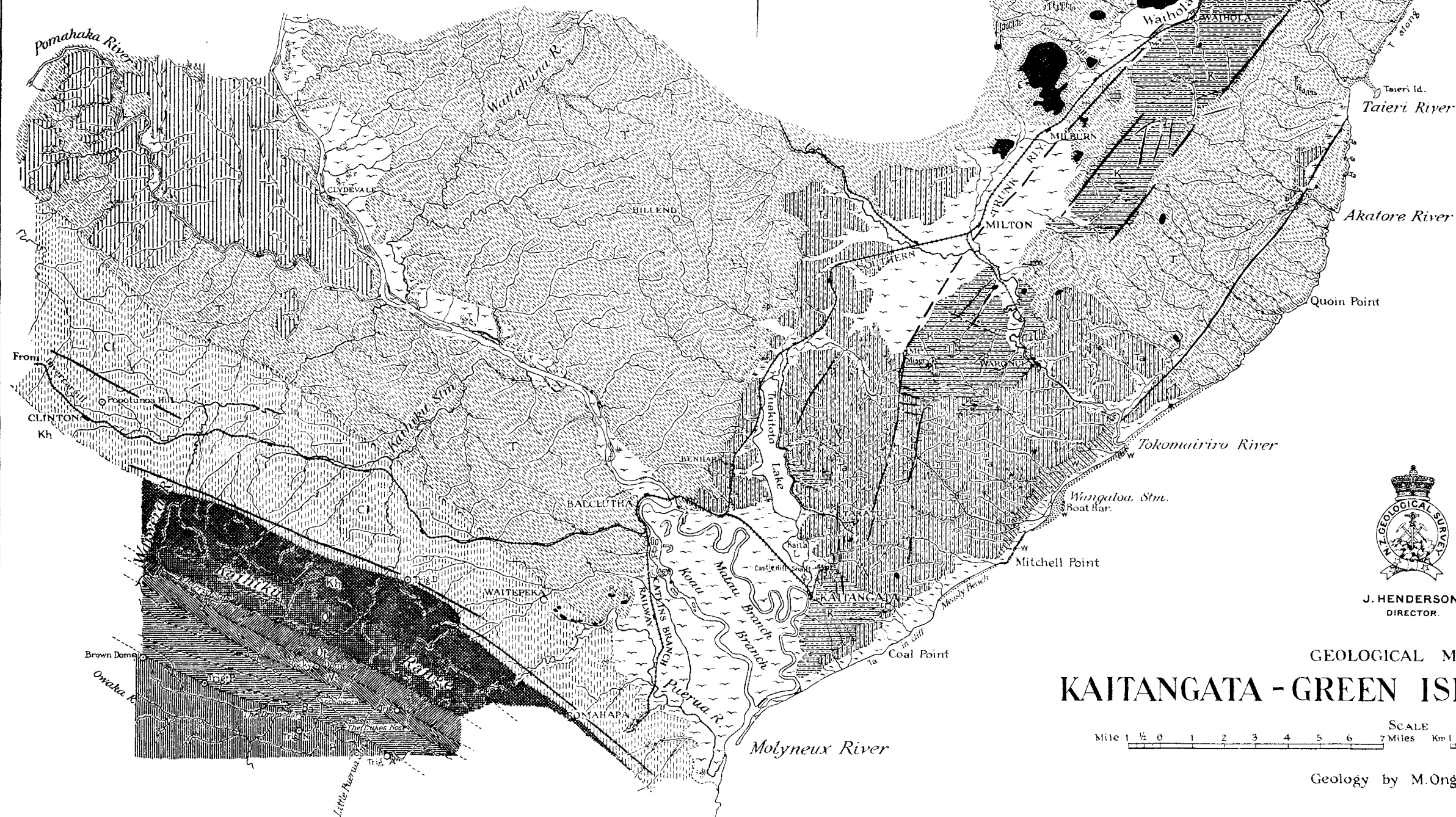
IGNEOUS ROCKS

Basalt &c	
Porphyry	Py

Faults



TUAPEKA SUBN. (N. Z. G. S. BULL 19)



J. HENDERSON
DIRECTOR

GEOLOGICAL MAP OF KAITANGATA - GREEN ISLAND SUBDIVISION



Geology by M. Ongley, 1933.