

FIG. 4.—Characteristic forest scene along the road between the two glaciers. Note the absence of dead trees and the abundance of the fern (*Blechnum procerum*).

[Photo, B. Theim.]

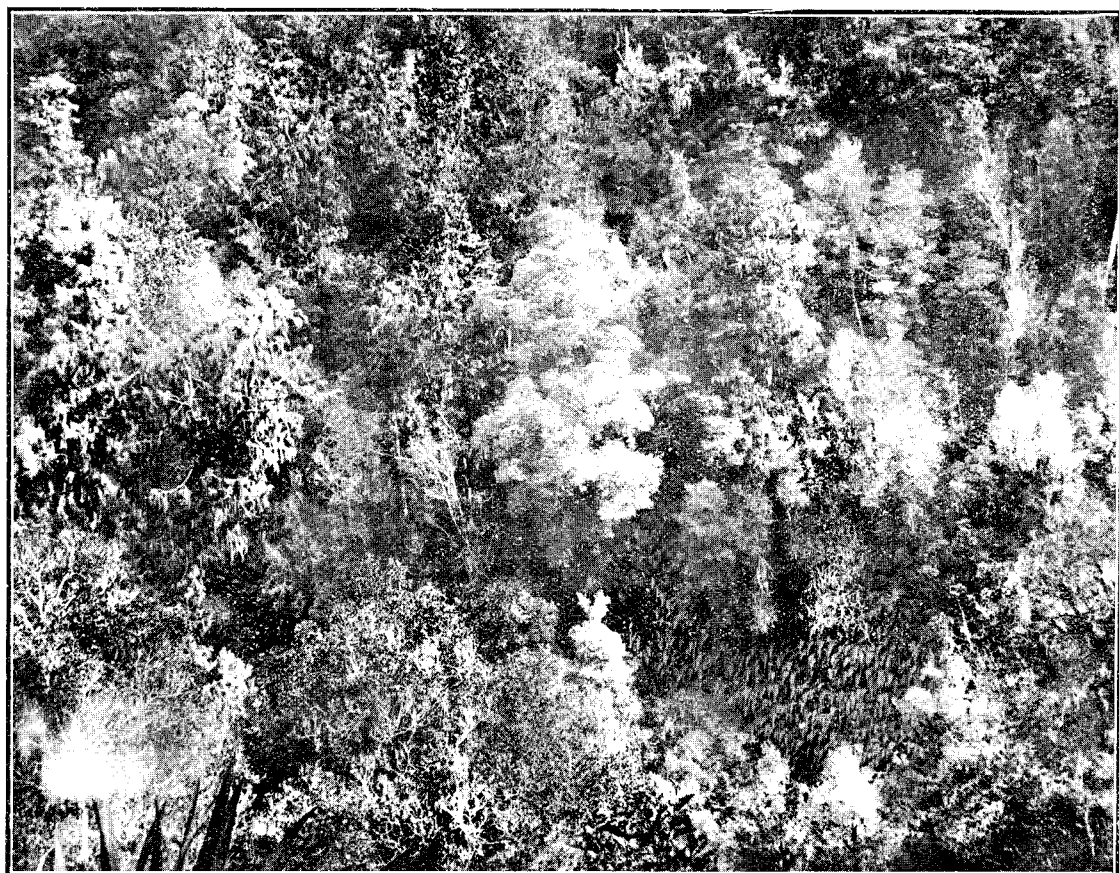


FIG. 5.—General view of a piece of virgin lowland forest as seen from the Main South Road leading from the Franz Josef to the Fox Glacier, and showing its extreme density. The trees are mainly rimu (*Dacrydium cupressinum*) and kamahi (*Weinmannia racemosa*). In foreground, on right-hand side, is a bank of the fern (*Blechnum procerum*).

[Photo, L. Cockayne.]